



# **Dell Pro 24 Conferencing Monitor**

## **E2426HB**

### Teardown Instructions

## Notes, cautions, and warnings

 **NOTE:** A NOTE indicates important information that helps you make better use of your product.

 **CAUTION:** A CAUTION indicates either potential damage to hardware or loss of data and tells you how to avoid the problem.

 **WARNING:** A WARNING indicates a potential for property damage, personal injury, or death.

# Contents

<b>Safety instructions</b> . . . . .	<b>4</b>
<b>Before working inside your monitor</b> . . . . .	<b>5</b>
<b>After working inside your monitor</b> . . . . .	<b>5</b>
<b>Disassembly and reassembly</b> . . . . .	<b>6</b>
<b>Recommended tools</b> . . . . .	<b>6</b>
<b>Screw list</b> . . . . .	<b>6</b>
<b>Stand</b> . . . . .	<b>7</b>
Removing the stand . . . . .	7
Installing the stand . . . . .	8
<b>Back cover</b> . . . . .	<b>9</b>
Removing the back cover . . . . .	9
Installing the back cover . . . . .	10
<b>Speakers</b> . . . . .	<b>11</b>
Removing the speakers . . . . .	11
Installing the speakers . . . . .	12
<b>USB Board</b> . . . . .	<b>13</b>
Removing the USB board . . . . .	13
Installing the USB board . . . . .	14
<b>Keypad board</b> . . . . .	<b>15</b>
Removing the keypad board . . . . .	15
Installing the keypad board . . . . .	16
<b>Main chassis</b> . . . . .	<b>17</b>
Removing the main chassis . . . . .	17
Installing the main chassis . . . . .	18
<b>Middle frame</b> . . . . .	<b>19</b>
Removing the middle frame . . . . .	19
Installing the middle frame . . . . .	20
<b>LED board</b> . . . . .	<b>21</b>
Removing the LED board . . . . .	21
Installing the LED board . . . . .	22
<b>Camera module</b> . . . . .	<b>23</b>
Removing the camera module . . . . .	23
Installing the camera module . . . . .	24
<b>Main board</b> . . . . .	<b>25</b>
Removing the main board . . . . .	25
Installing the main board . . . . .	26
<b>Power board</b> . . . . .	<b>27</b>
Removing the power board . . . . .	27
Installing the power board . . . . .	28
<b>Contacting Dell</b> . . . . .	<b>29</b>
<b>Revision History</b> . . . . .	<b>30</b>

# Safety instructions

Use the following safety guidelines to protect your monitor from potential damage and to ensure your personal safety. Unless otherwise noted, each procedure in this document assumes that you have read the safety information that shipped with your monitor.

**NOTE:** Before using the monitor, read the safety information that is shipped with your monitor and printed on the product. Keep the documentation at a secure location for future reference.

**CAUTION:** The possible long-term effect of listening to audio at high volume through the headphones (on monitors that support it) can damage your hearing ability.

**WARNING:** Use of controls, adjustments, or procedures other than those specified in this documentation may result in exposure to shock, electrical hazards and/or mechanical hazards.

- Place the monitor on a solid surface and handle it carefully.
  - The screen is fragile and can be damaged if dropped or pressed with a sharp object.
  - Ensure that your monitor is electrically rated to operate with the AC power available in your location.
  - Keep the monitor at room temperature. Excessive cold or hot conditions can have an adverse effect on the liquid crystal of the display.
  - Connect the power cable from the monitor to a wall outlet that is near and accessible. See [Connecting your monitor](#).
- Do not place or use the monitor on a wet surface or near water.
- Do not subject the monitor to severe vibration or high impact conditions. For example, do not place the monitor inside a car trunk.
- Unplug the monitor when it is going to be left unused for an extended period.
- To avoid electric shock, do not attempt to remove any cover or touch the inside of the monitor.
- Read these instructions carefully. Keep this document for future reference. Follow all warnings and instructions that are marked on the product.
- Certain monitors can be wall-mounted using the VESA mount that is sold separately. Ensure to use the correct VESA specifications as mentioned in the wall-mounting section of the User's Guide.

For information about safety instructions, see the *Safety, Environmental, and Regulatory Information (SERI)* document that is shipped with your monitor.

## Before working inside your monitor

### Steps

1. Save and close all open files and exit all running applications.
  2. Turn off your monitor.
  3. Disconnect your monitor and all attached devices from their electrical outlets.
  4. Disconnect all attached network devices and peripherals, such as the keyboard, mouse, and dock from your monitor.
- ⚠ WARNING: To disconnect a network cable, first unplug the cable from your monitor and then unplug the cable from the network device.**
5. Remove any media card and optical disc from your monitor, if applicable.

## After working inside your monitor

**⚠ CAUTION: Leaving stray or loose screws inside your monitor may severely damage it.**

### Steps

1. Replace all screws and ensure that no stray screws remain inside your monitor.
2. Connect any external devices, peripherals, or cables you removed before working on your monitor.
3. Reinsert any media cards, discs, or any other parts that you removed before working on your monitor.
4. Connect your monitor and all attached devices to their electrical outlets.
5. Turn on your monitor.

# Disassembly and reassembly

**⚠ CAUTION:** The information in this section is intended for authorized service technicians in the EMEA region. Dell prohibits users from disassembling the monitor, and any damage that is caused by unauthorized servicing will not be covered under the warranty.

## Recommended tools











Tool Description:

- Phillips screwdriver #0
- Phillips screwdriver #2
- Penknife

## Screw list

- ⓘ NOTE:** When removing screws from a component, it is recommended to note the screw type, the quantity of screws, and then place them in a screw storage box. This is to ensure that the correct number of screws and correct screw type is restored when the component is replaced.
- ⓘ NOTE:** Some monitors have magnetic surfaces. Ensure that the screws are not left attached to such surfaces when replacing a component.
- ⓘ NOTE:** Screw color may vary depending on the configuration ordered.

**Table 1. Components and descriptions.**

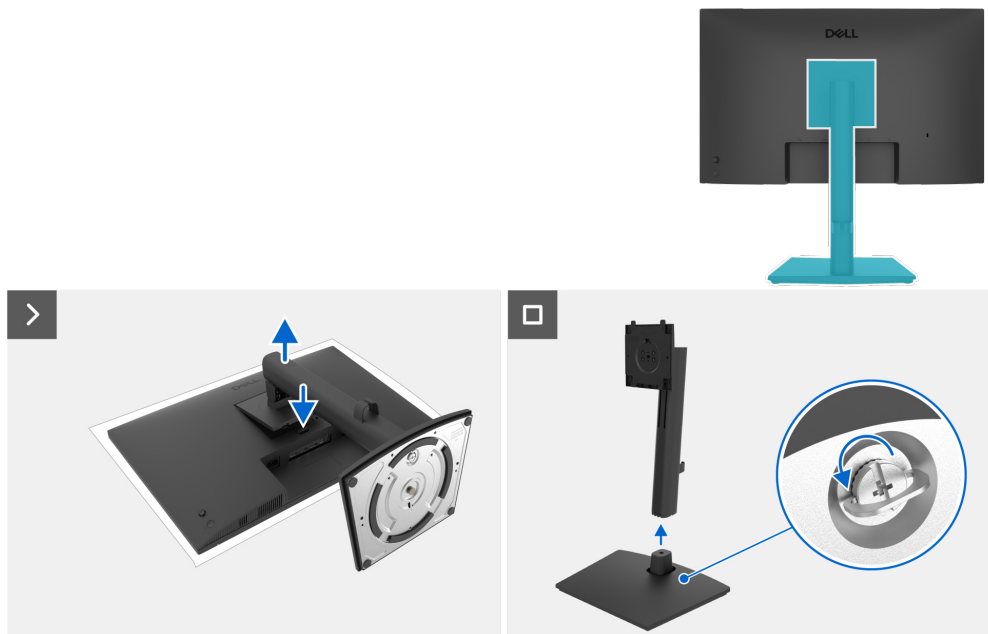
Component	Screw type	Quantity	Screw image
Back cover	M4x10	4	
Speakers	M3x6	4	
USB board	M3x6	1	
Keypad board	M2x3.3	2	
Main chassis	M3x5	2	
Middle frame	M3x5	9	
Camera module	M2x3.3	2	
Main Board	M3x6	3	
Power board groundwire	M4x8	1	
Power board	M3x6	2	

## Stand

### Removing the stand

#### Prerequisites

1. Follow the procedure in [Before working inside your monitor.](#)

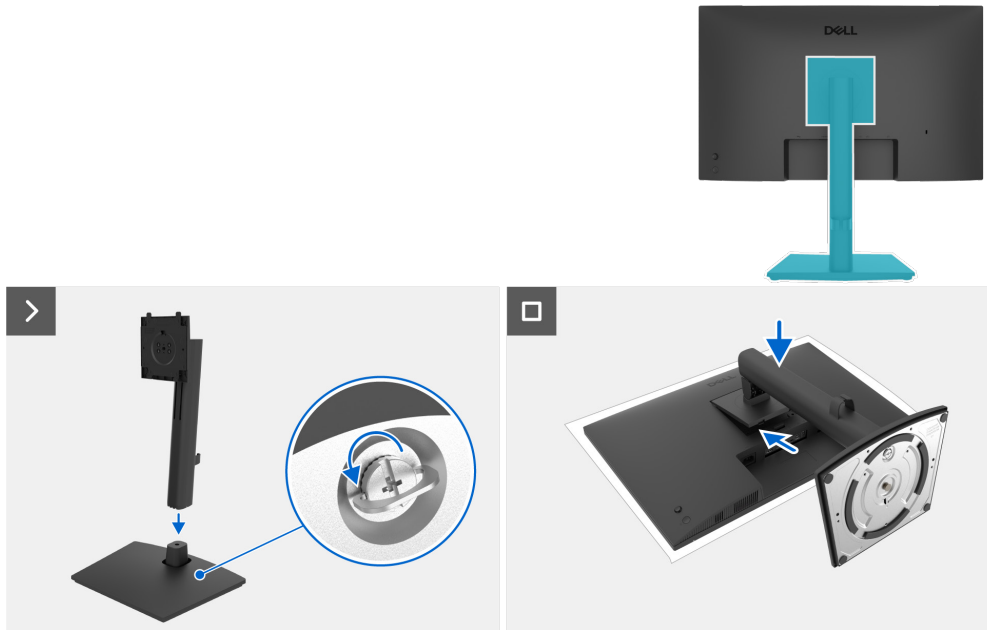


**Figure 1. Removing the stand**

#### Steps

1. Place the monitor on a soft cloth or cushion on the desk.
2. Hold and push the stand-release button.
3. Lift the stand up and away from the monitor.
4. Open the screw handle at the bottom of the stand base, and turn it anti-clockwise to unlock the riser with base.
5. Remove the stand riser from the stand base.

## Installing the stand



**Figure 2. Installing the stand**

### Steps

1. Align the tabs on the stand base with the slots on the stand riser.
2. Insert the stand riser on the stand base firmly.
3. Open the screw handle at the bottom of the stand base, and rotate it clockwise to tighten the screw firmly. Close the screw handle.
4. Place the monitor on a soft cloth or cushion near the edge of the desk.
5. Align the stand assembly bracket to the monitor head.
6. Insert the stand assembly bracket into the monitor until it locks in place.

### Next steps

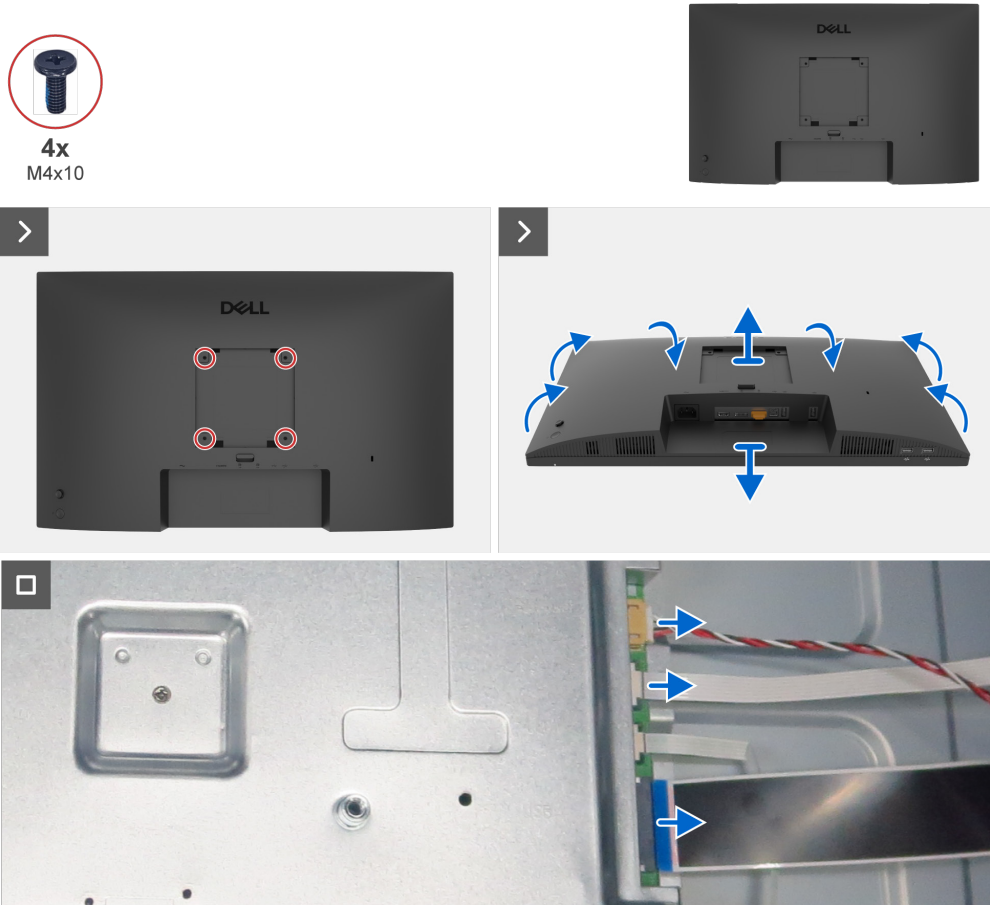
1. Follow the procedure in [After working inside your monitor.](#)

# Back cover

## Removing the back cover

### Prerequisites

1. Follow the procedure in [Before working inside your monitor.](#)
2. Remove the [stand](#).



**Figure 3. Removing the back cover**

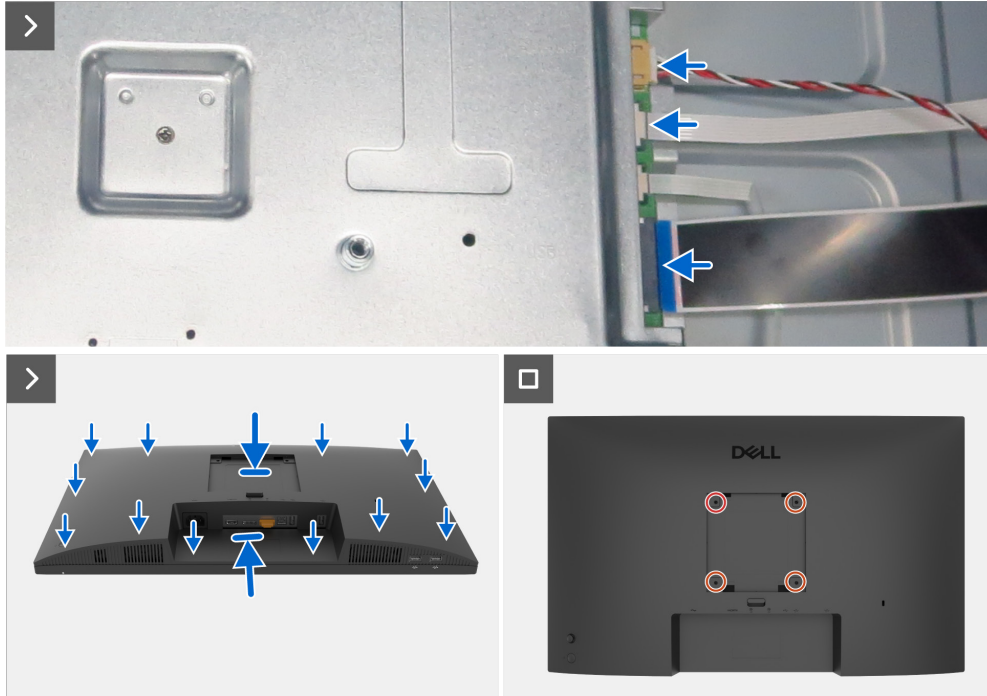
### Steps

1. Remove the four screws (M4x10) to release the back cover.
2. Using both hands, gently pry the back cover, starting from the top side, then moving to the left and right sides.
3. Partially lift the back cover from the bottom edge.
4. Disconnect the keypad cable, speaker cable and USB cable from the connectors on the main board.
5. Remove the back cover from the display assembly.

## Installing the back cover



4x  
M4x10



**Figure 4.** Installing the back cover

### Steps

1. Connect the USB cable, speaker cable and keypad cable to the connectors on the main board.
2. Align the back cover with the main chassis, then press along the sides to snap the back cover into place.
3. Replace the four screws (M4x10) to secure the back cover to the monitor.

### Next steps

1. Install the [stand](#).
2. Follow the procedure in [After working inside your monitor](#).

# Speakers

## Removing the speakers

### Prerequisites

1. Follow the procedure in [Before working inside your monitor.](#)
2. Remove the [stand.](#)
3. Remove the [back cover.](#)

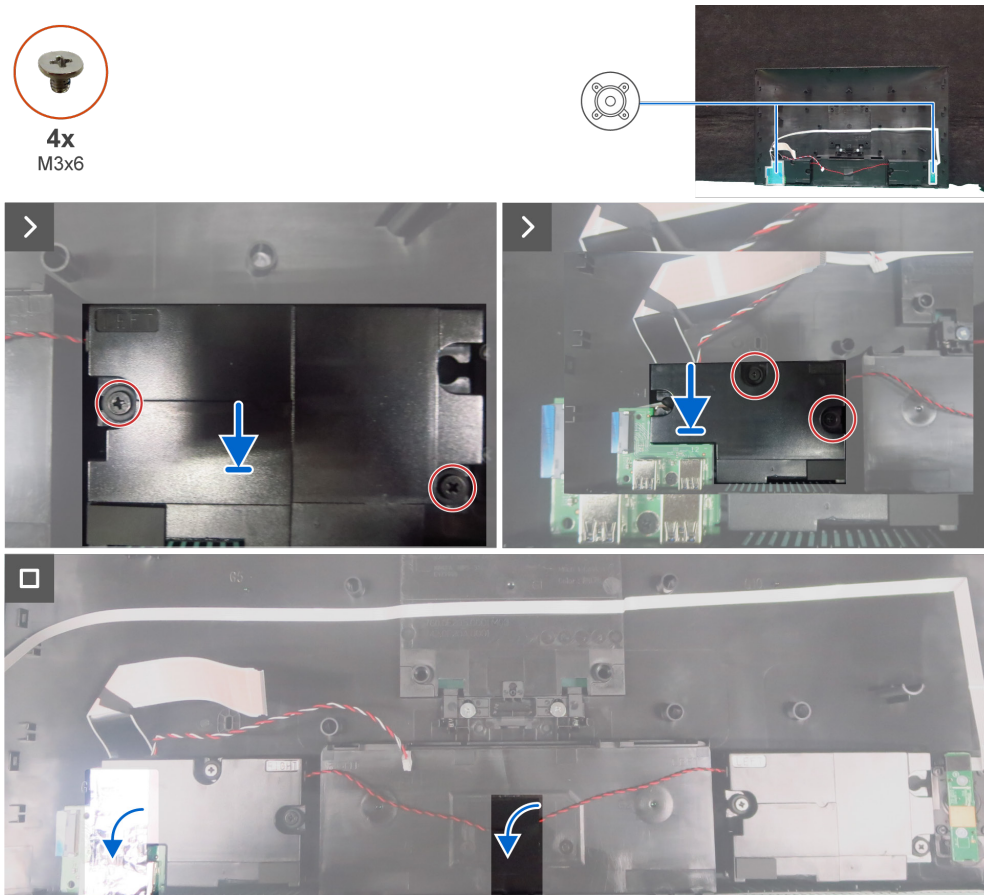


**Figure 5.** Removing the speakers

### Steps

1. Peel the aluminum foil and tapes on the speaker cable.
2. Remove the four screws (M3x6) that secure the two speakers to the back cover.
3. Remove the two speakers from the locating pins on the back cover.

## Installing the speakers



**Figure 6. Installing the speakers**

### Steps

1. Align the holes on the two speakers to the locating pins on the back cover, and place it down.
2. Replace the four screws (M3x6) that secure the two speakers to the back cover.
3. Adhere the aluminum foil and tapes to secure the speaker cable to the back cover.

### Next steps

1. Install the [back cover](#).
2. Install the [stand](#).
3. Follow the procedure in [After working inside your monitor](#).

# USB Board

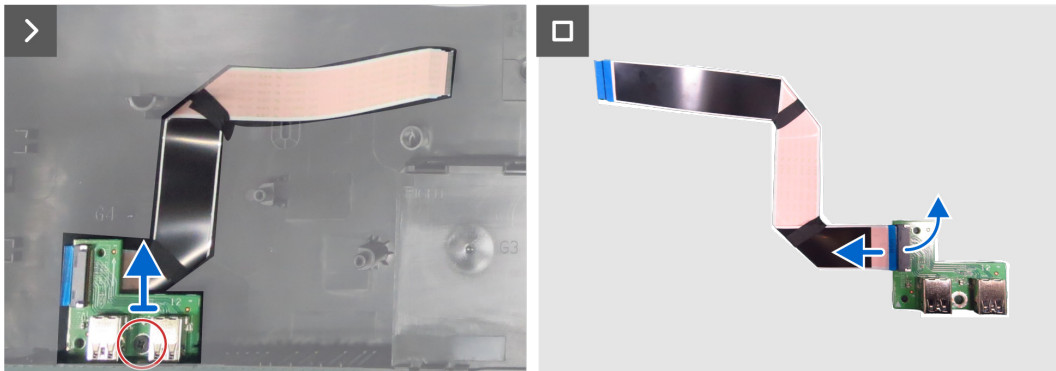
## Removing the USB board

### Prerequisites

1. Follow the procedure in [Before working inside your monitor.](#)
2. Remove the [stand.](#)
3. Remove the [back cover.](#)
4. Remove the [speakers.](#)



1x  
M3x6



**Figure 7.** Removing the USB board

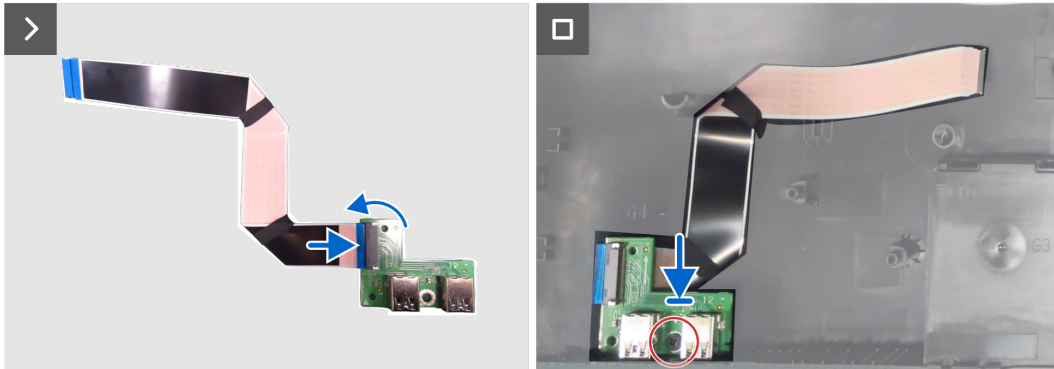
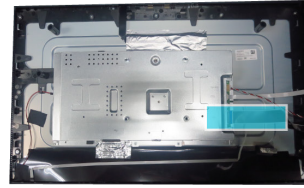
### Steps

1. Remove the screw (M3x6) that secures the USB board to the middle frame.
2. Remove the USB board from middle frame.
3. Lift the lock and pull out the USB cable from the USB board.

## Installing the USB board



1x  
M3x6



**Figure 8.** Installing the USB board

### Steps

1. Connect the USB cable to the USB board and lock it.
2. Replace the USB board to the middle frame.
3. Replace the screw (M3x6) that secures the USB board to the middle frame.

### Next steps

1. Install the [speakers](#).
2. Install the [back cover](#).
3. Install the [stand](#).
4. Follow the procedure in [After working inside your monitor](#).

# Keypad board

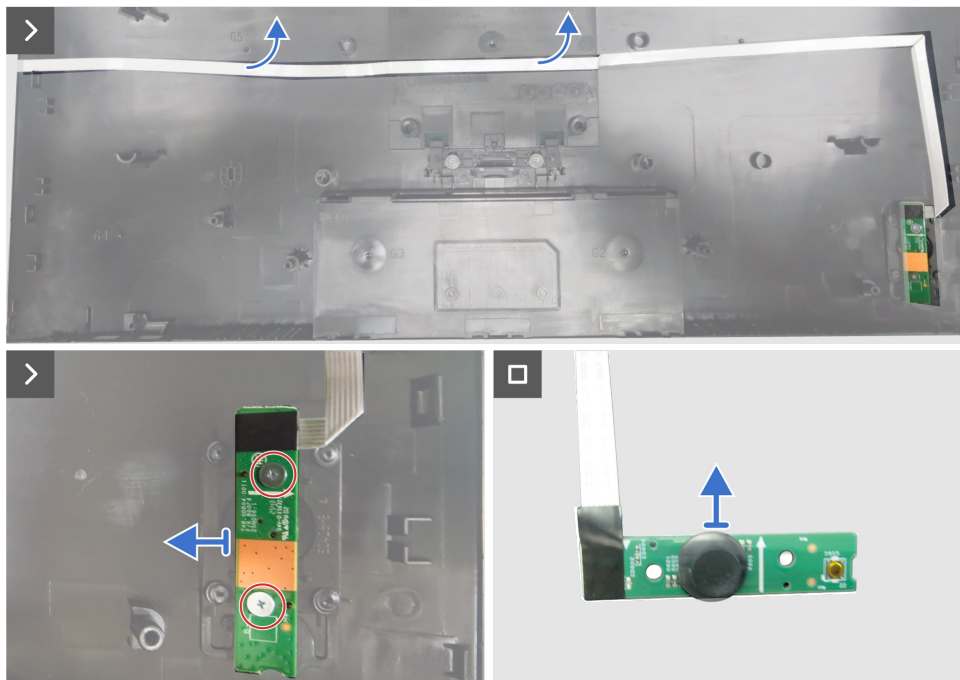
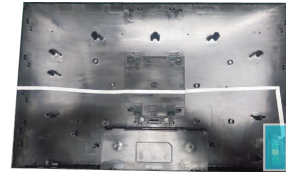
## Removing the keypad board

### Prerequisites

1. Follow the procedure in [Before working inside your monitor.](#)
2. Remove the [stand.](#)
3. Remove the [back cover.](#)
4. Remove the [speakers.](#)
5. Remove the [USB board.](#)



2x  
M2x3.3

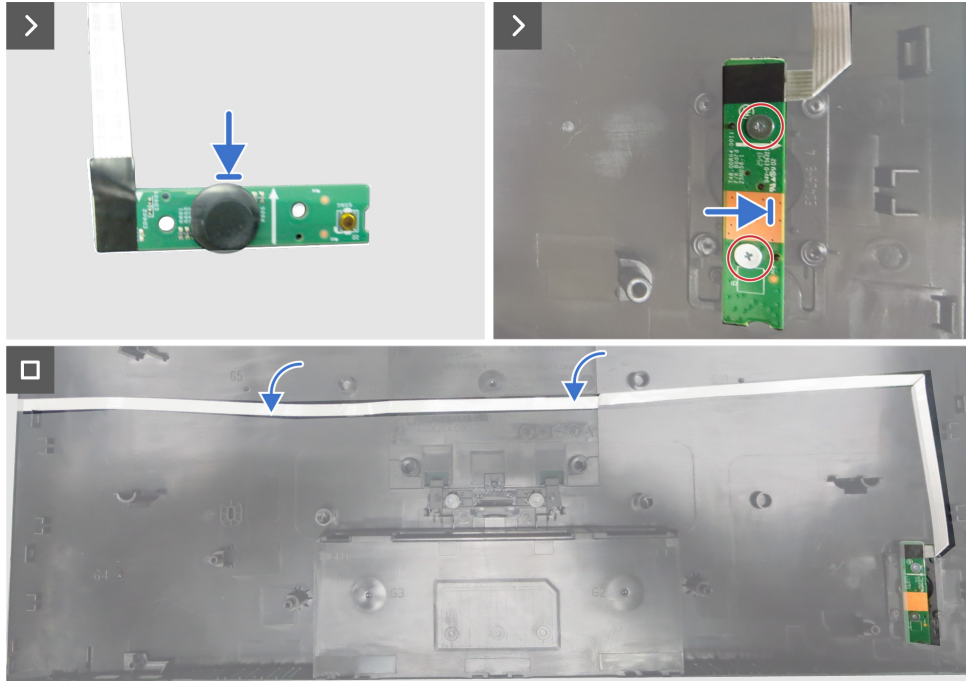
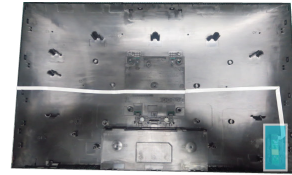


**Figure 9. Removing the keypad board**

### Steps

1. Peel the double-sided tape that secures the keypad cable to the back cover.
2. Remove the two screws (M2x3.3) that secure the keypad board to the back cover.
3. Remove the keypad board from the pins on the back cover.
4. Remove the joystick key from the keypad board.

## Installing the keypad board



**Figure 10.** Installing the keypad board

### Steps

1. Replace the joystick key to the keypad board.
2. Align the holes on the keypad board with the screw holes on the back cover, and place it down.
3. Replace the two screws (M2x3.3) that secure the keypad board to the back cover.
4. Adhere the double-sided tape to secure the keypad cable to the back cover.

### Next steps

1. Install the [USB board](#).
2. Install the [speakers](#).
3. Install the [back cover](#).
4. Install the [stand](#).
5. Follow the procedure in [After working inside your monitor](#).

# Main chassis

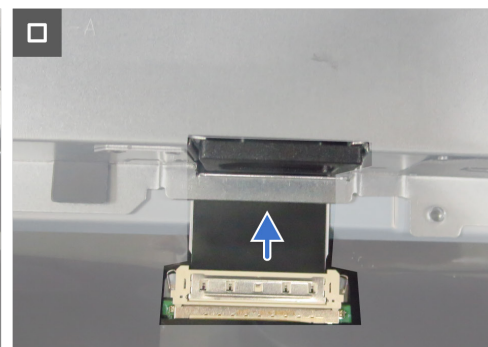
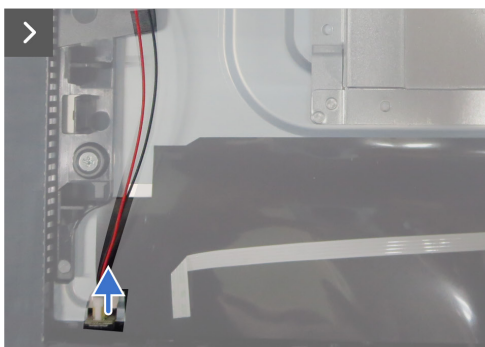
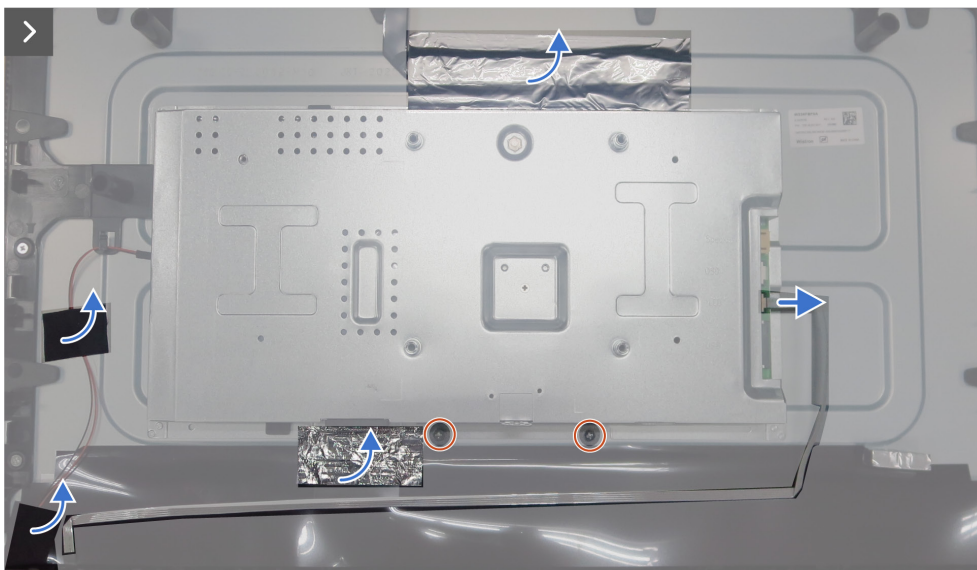
## Removing the main chassis

### Prerequisites

1. Follow the procedure in [Before working inside your monitor](#).
2. Remove the [stand](#).
3. Remove the [back cover](#).
4. Remove the [speakers](#).
5. Remove the [USB board](#).
6. Remove the [keypad board](#).



2x  
M3x5

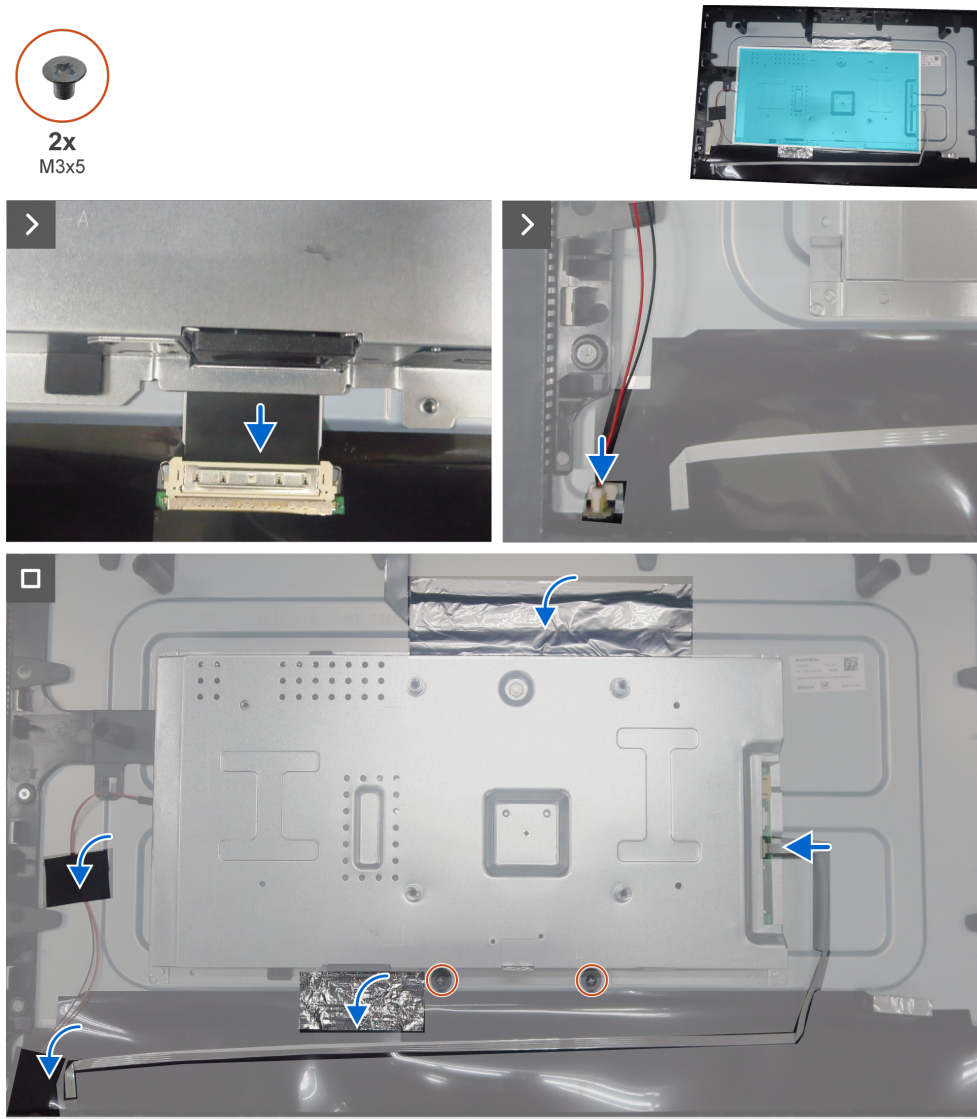


**Figure 11.** Removing the main chassis

### Steps

1. Peel the acetate tape and aluminum foil.
2. Disconnect LED cable from the connector on the main board.
3. Disconnect the lightbar cable from the connector on the display panel.
4. Remove the two screws (M3x5) that secure the main chassis to the display panel.
5. Disconnect the LVDS cable from the connector on the display panel.
6. Lift and remove the main chassis from the display panel.

## Installing the main chassis



**Figure 12.** Installing the main chassis

### Steps

1. Connect the LVDS cable to the connector on the display panel.
2. Align the holes on the main chassis with the screw holes on the display panel, and place it down.
3. Replace the two screws (M3x5) that secure the main chassis to the display panel.
4. Connect the lightbar cable to the display panel and adhere the acetate tape to cover the lightbar connector.
5. Adhere the aluminum foil on the main chassis.

### Next steps

1. Install the [keypad board](#).
2. Install the [USB board](#).
3. Install the [speakers](#).
4. Install the [back cover](#).
5. Install the [stand](#).
6. Follow the procedure in [After working inside your monitor](#).

## Middle frame

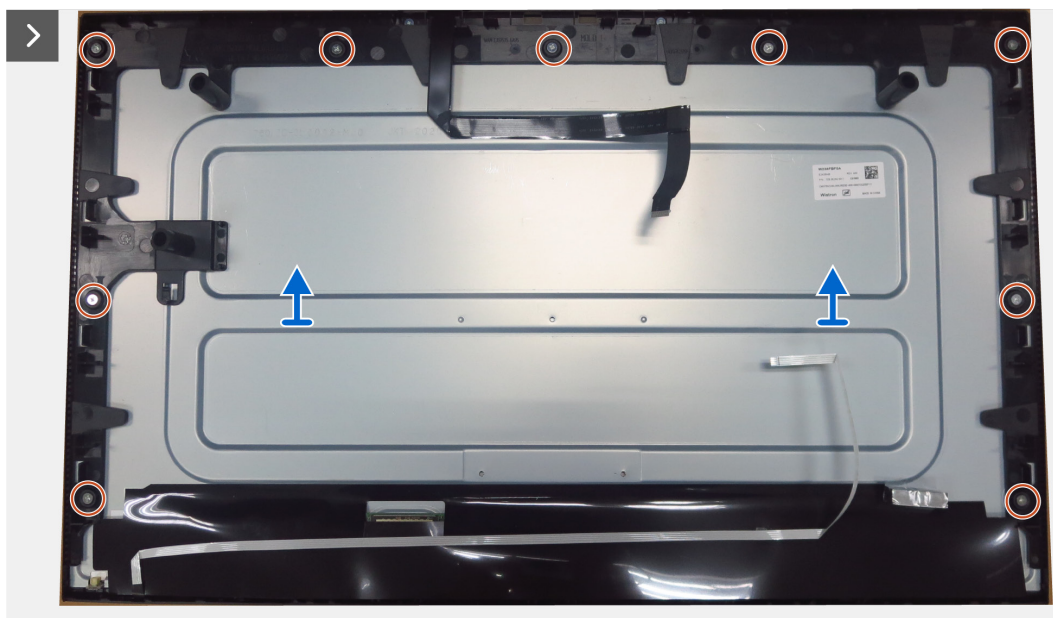
### Removing the middle frame

#### Prerequisites

1. Follow the procedure in [Before working inside your monitor.](#)
2. Remove the [stand.](#)
3. Remove the [back cover.](#)
4. Remove the [speakers.](#)
5. Remove the [USB board.](#)
6. Remove the [keypad board.](#)
7. Remove the [main chassis.](#)



**9x**  
M3x5



**Figure 13.** Removing the middle frame

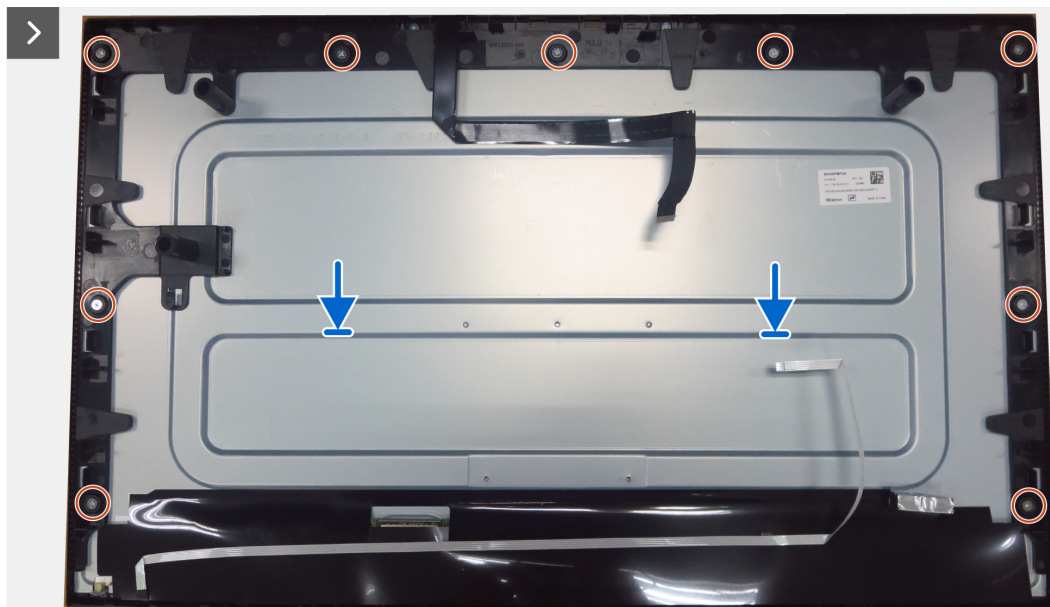
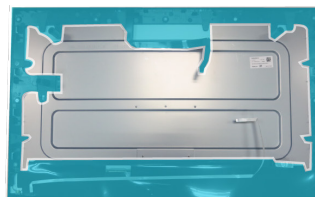
#### Steps

1. Remove the nine screws (M3x5) that secure the middle frame to the display panel.
2. Lift and remove the middle frame away from the display panel.

## Installing the middle frame



9x  
M3x5



**Figure 14.** Installing the middle frame

### Steps

1. Align and place the middle frame on the display panel.
2. Replace the nine screws (M3x5) that secure the middle frame to the display panel.
3. Adhere the LED board to secure the LED cable to it on the panel.

### Next steps

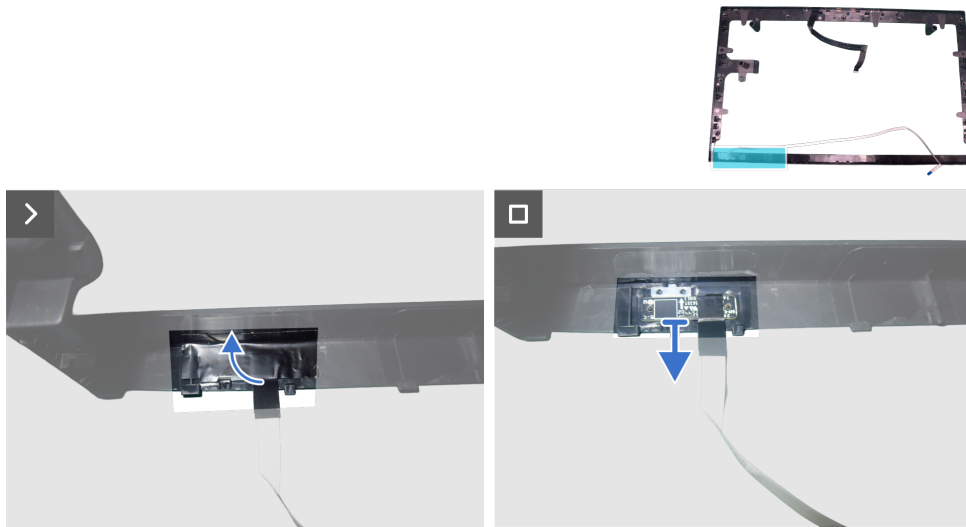
1. Install the [main chassis](#).
2. Install the [keypad board](#).
3. Install the [USB board](#).
4. Install the [speakers](#).
5. Install the [back cover](#).
6. Install the [stand](#).
7. Follow the procedure in [After working inside your monitor](#).

## LED board

### Removing the LED board

#### Prerequisites

1. Follow the procedure in [Before working inside your monitor.](#)
2. Remove the [stand.](#)
3. Remove the [back cover.](#)
4. Remove the [speakers.](#)
5. Remove the [USB board.](#)
6. Remove the [keypad board.](#)
7. Remove the [main chassis.](#)
8. Remove the [middle frame.](#)

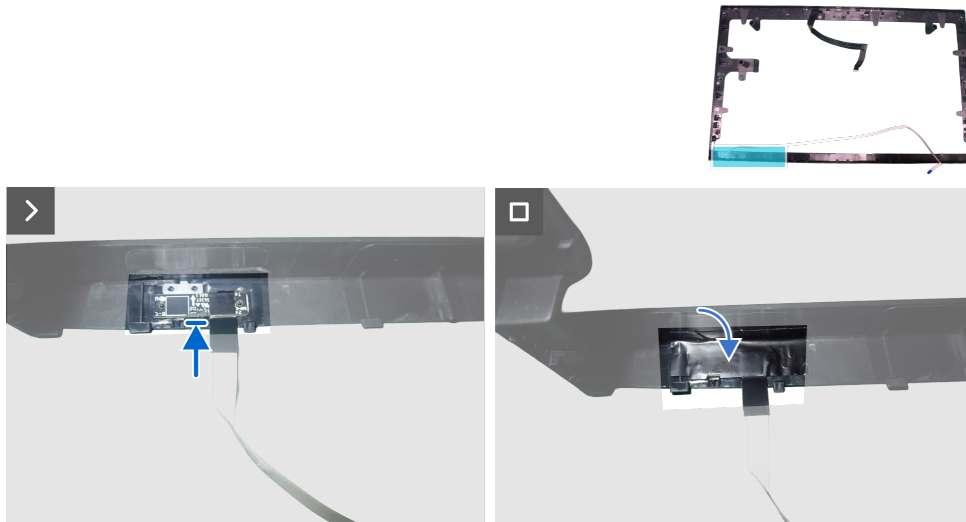


**Figure 15.** Removing the LED board

#### Steps

1. Peel the mylar tape from the LED board.
2. Remove the LED board from the pins on the back cover.

## Installing the LED board



**Figure 16.** Installing the LED board

### Steps

1. Align the holes on the LED board with the pins on the back cover, and place it in the slot.
2. Adhere the mylar tape to cover the LED board.

### Next steps

1. Install the [middle frame](#).
2. Install the [main chassis](#).
3. Install the [keypad board](#).
4. Install the [USB board](#).
5. Install the [speakers](#).
6. Install the [back cover](#).
7. Install the [stand](#).
8. Follow the procedure in [After working inside your monitor](#).

# Camera module

## Removing the camera module

### Prerequisites

1. Follow the procedure in [Before working inside your monitor.](#)
2. Remove the [stand.](#)
3. Remove the [back cover.](#)
4. Remove the [speakers.](#)
5. Remove the [USB board.](#)
6. Remove the [keypad board.](#)
7. Remove the [main chassis.](#)
8. Remove the [middle frame.](#)
9. Remove the [LED board.](#)
10. Remove the [camera module.](#)



Figure 17. Removing the camera module

### Steps

1. Remove the two screws (M2x3.3) that secure the camera module to the middle frame.
2. Remove the camera module.
3. Disconnect the camera cable from the connector on the camera module board.

## Installing the camera module



**Figure 18.** Installing the camera module

### Steps

1. Connect the camera cable to the connector on the camera board.
2. Align the screw holes on the camera module to the screws holes on the middle frame.
3. Replace the two screws (M2x3.3) that secure the camera module to the middle frame.

### Next steps

1. Install the [LED board](#).
2. Install the [middle frame](#).
3. Install the [main chassis](#).
4. Install the [keypad board](#).
5. Install the [USB board](#).
6. Install the [speakers](#).
7. Install the [back cover](#).
8. Install the [stand](#).
9. Follow the procedure in [After working inside your monitor](#).

# Main board

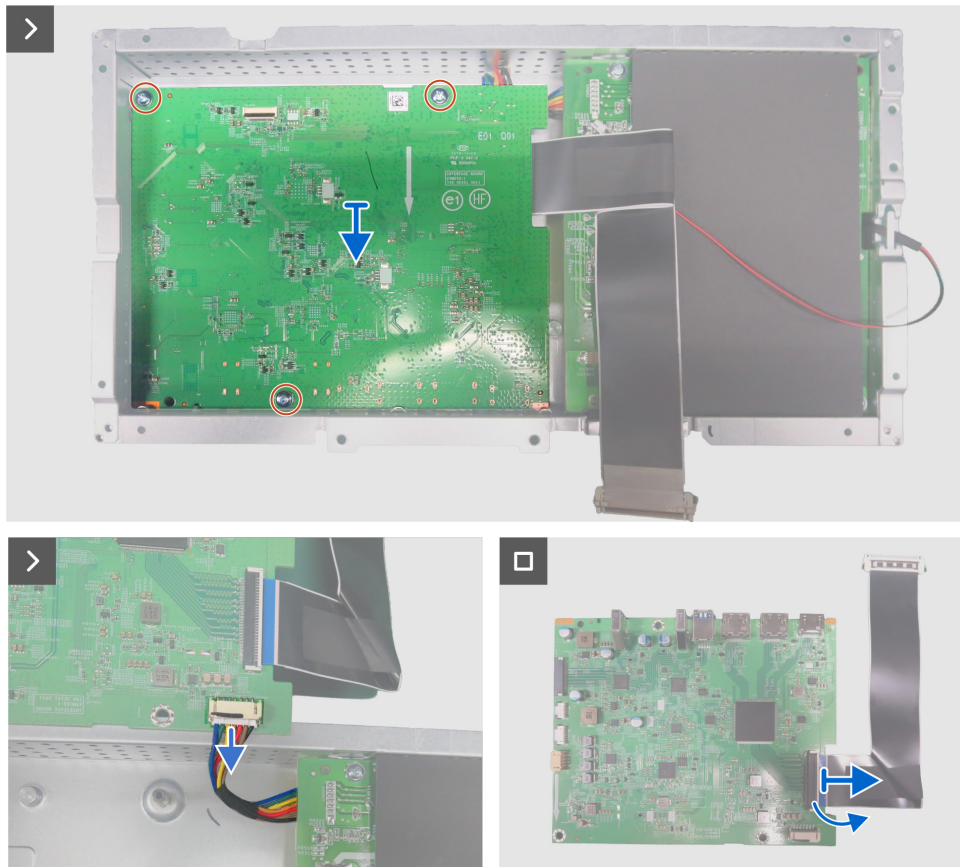
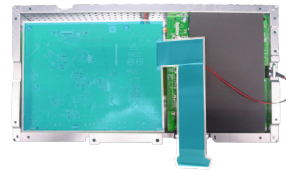
## Removing the main board

### Prerequisites

1. Follow the procedure in [Before working inside your monitor.](#)
2. Remove the [stand.](#)
3. Remove the [back cover.](#)
4. Remove the [speakers.](#)
5. Remove the [USB board.](#)
6. Remove the [keypad board.](#)
7. Remove the [main chassis.](#)
8. Remove the [middle frame.](#)
9. Remove the [LED board.](#)
10. Remove the [camera module.](#)



3x  
M3x6

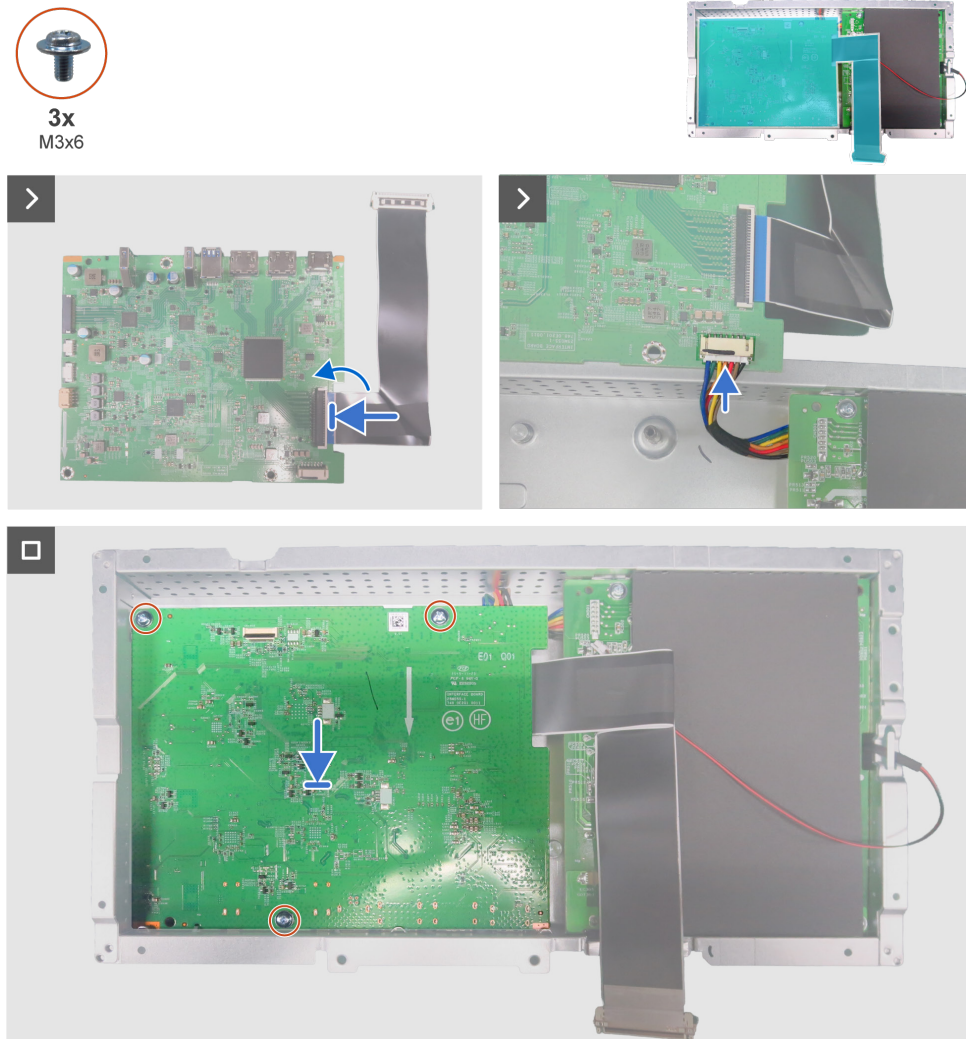


**Figure 19. Removing the main board**

### Steps

1. Remove the three screws (M3x6) that secures the main board to the main chassis.
2. Disconnect the power cable from the main board.
3. Remove the main board, and disconnect the LVDS cable from the connector on the main board.

## Installing the main board



**Figure 20. Installing the main board**

### Steps

1. Connect the LVDS cable to the connector on the main board.
2. Connect the power cable to the main board and then place the main board onto the main chassis.
3. Align the screw holes on the main board to the screw holes on the main chassis, and place it down.
4. Replace the three screws (M3x6) that secures the main board to the main chassis.

### Next steps

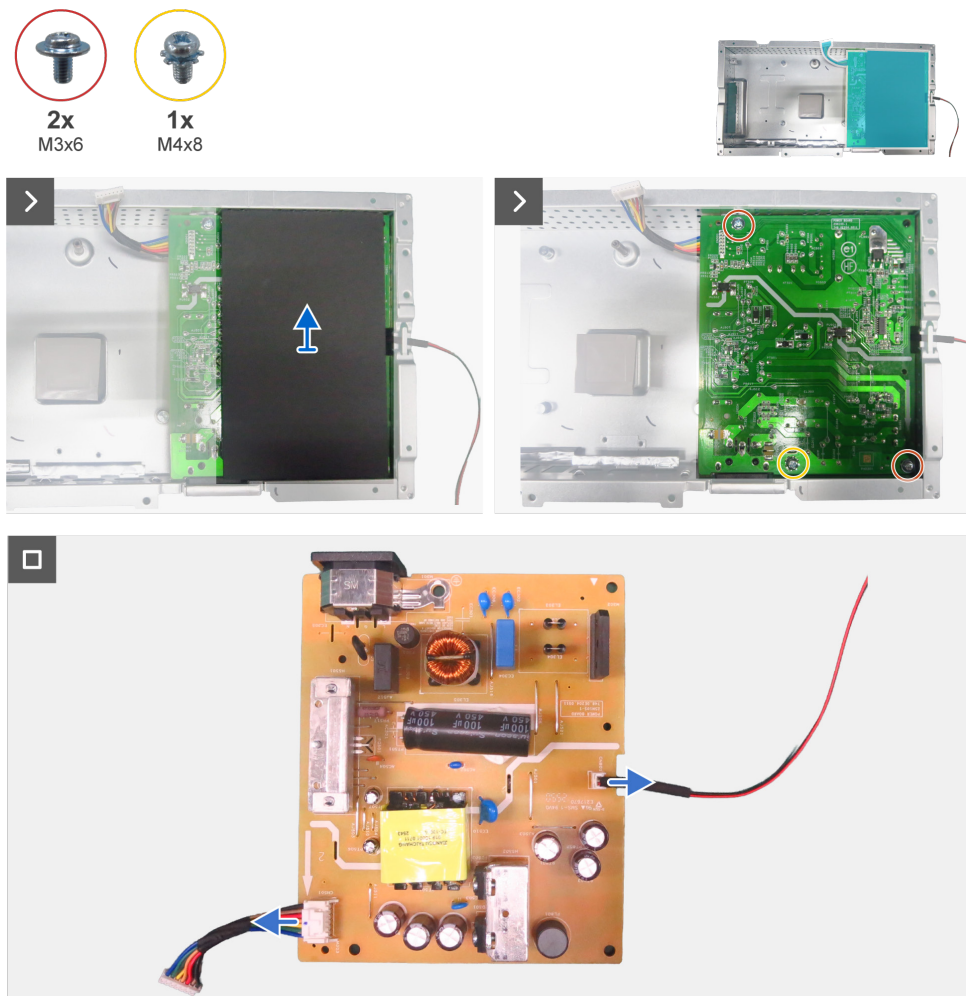
1. Install the [camera module](#).
2. Install the [LED board](#).
3. Install the [middle frame](#).
4. Install the [main chassis](#).
5. Install the [keypad board](#).
6. Install the [USB board](#).
7. Install the [speakers](#).
8. Install the [back cover](#).
9. Install the [stand](#).
10. Follow the procedure in [After working inside your monitor](#).

# Power board

## Removing the power board

### Prerequisites

1. Follow the procedure in [Before working inside your monitor](#).
2. Remove the [stand](#).
3. Remove the [back cover](#).
4. Remove the [speakers](#).
5. Remove the [USB board](#).
6. Remove the [keypad board](#).
7. Remove the [main chassis](#).
8. Remove the [middle frame](#).
9. Remove the [LED board](#).
10. Remove the [camera module](#).
11. Remove the [main board](#).

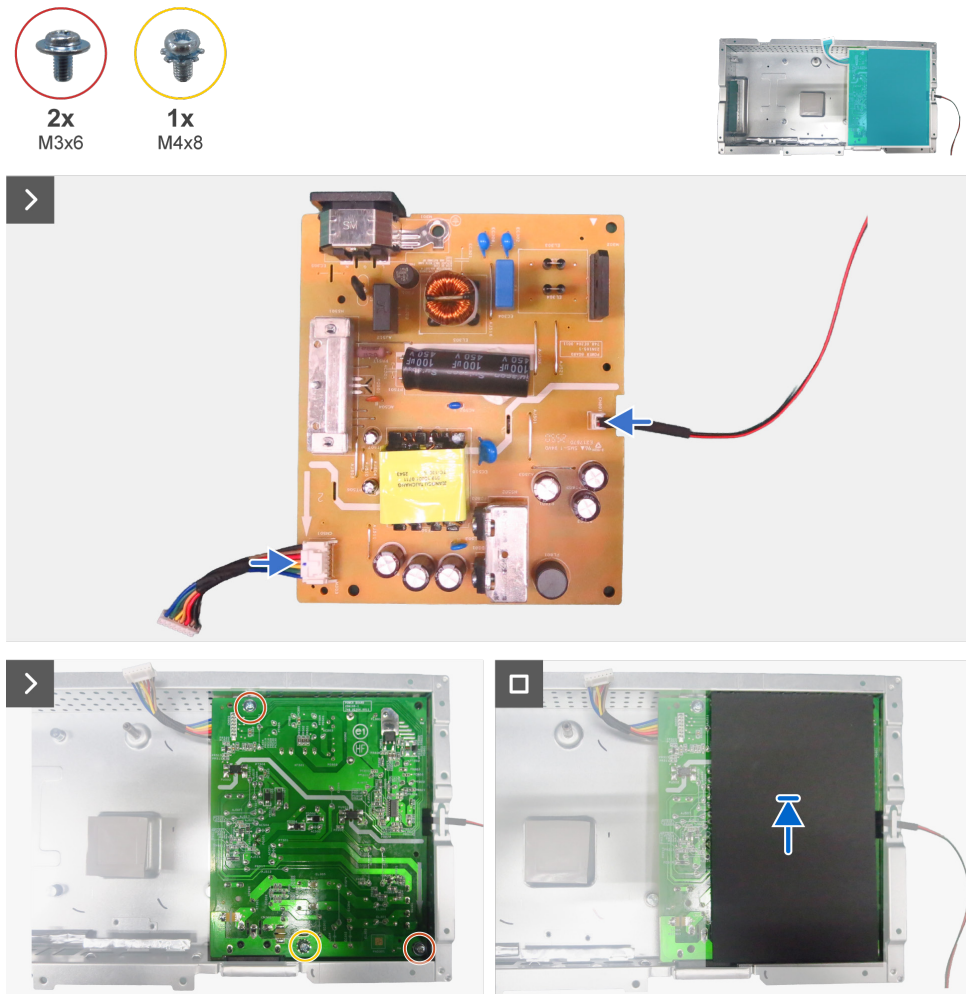


**Figure 21. Removing the power board**

### Steps

1. Unroute the lightbar cable from the routing guides on the main chassis.
2. Remove the Mylar sheet from the slot in the main chassis.
3. Remove the screw (M4x8) and the two screws (M3x6) that secure the Mylar sheet and power board to the main chassis.
4. Remove the power board from the main chassis.
5. Disconnect the lightbar cable and power cable from the connectors on the power board.

## Installing the power board



**Figure 22. Installing the power board**

### Steps

1. Connect the power cable and lightbar cable to the connectors on the power board.
2. Align the screw holes on the power board with the screw holes on the main chassis, and place it down.
3. Replace the two screws (M3x6) and the screw (M4x8) to secure the power board to the main chassis.
4. Insert the Mylar sheet into the slot on the main chassis.
5. Route the lightbar cable through the routing guides on the main chassis.

### Next steps

1. Install the [main board](#).
2. Install the [camera module](#).
3. Install the [LED board](#).
4. Install the [middle frame](#).
5. Install the [main chassis](#).
6. Install the [keypad board](#).
7. Install the [USB board](#).
8. Install the [speakers](#).
9. Install the [back cover](#).
10. Install the [stand](#).
11. Follow the procedure in [After working inside your monitor](#).

# Contacting Dell

To contact Dell for sales, technical support, or customer service issues, see [Contact Support at Dell Support Site](#).

- ① **NOTE:** Availability varies by country or region and product, and some services may not be available in your country or region.
- ① **NOTE:** If you do not have an active Internet connection, you can find contact information about your purchase invoice, packing slip, bill, or Dell product catalog.

# Revision History

The following table provides the revision history of this document:

**Table 2. Revision history**

<b>Revision</b>	<b>Date</b>	<b>Description</b>
A00	March 2026	Original publish date