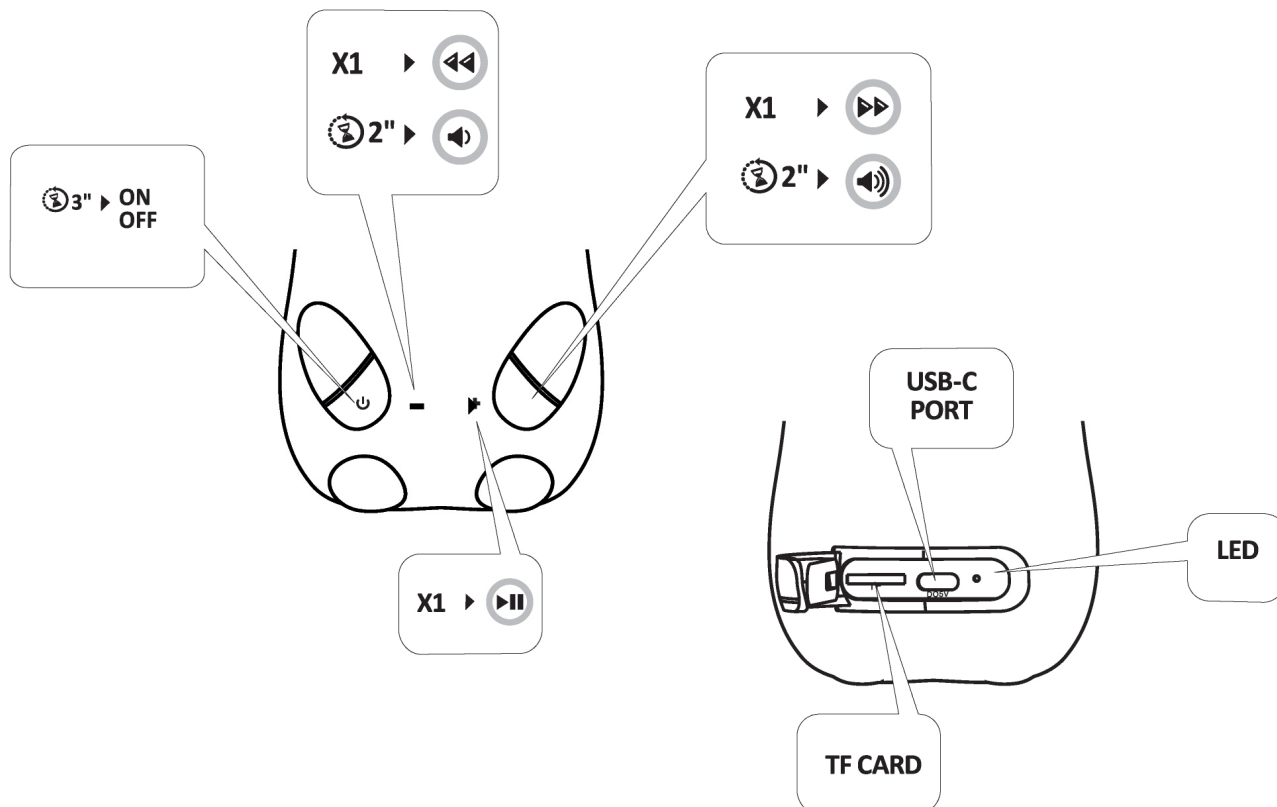
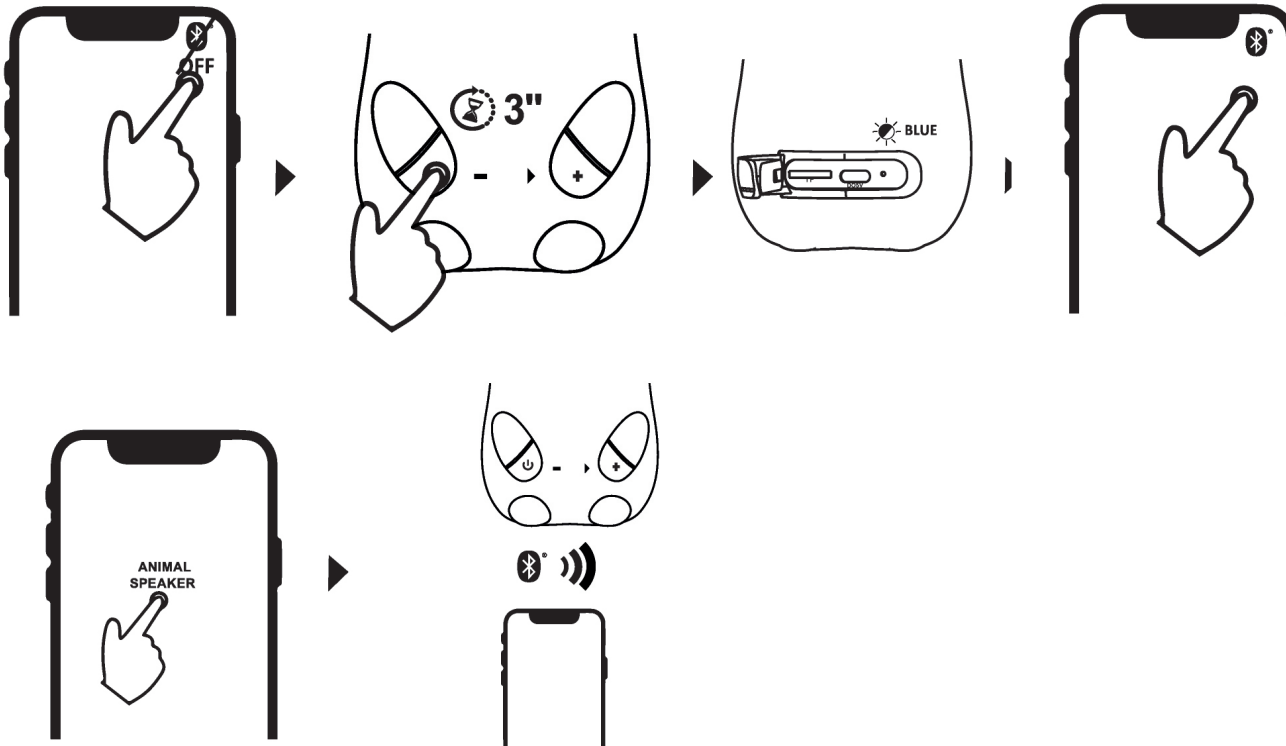
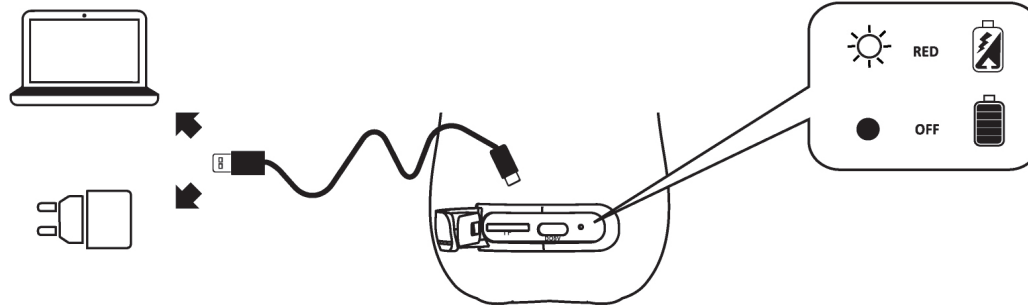


BTSPKPELUCHE1  
BTSPKPELUCHE2



EN

**Technical specifications:**  
Bluetooth® version: 5.4  
Supported profiles: A2DP AVRCP AVTCP HFP  
Range: 10 m  
Bluetooth® frequency range: 2402-2480 MHz  
Battery voltage: 3.7 V  
Battery capacity: 400 mAh  
USB-C port voltage: 5 V  
USB-C port current: 0.5 A  
Maximum EIRP: 2.511mW  
Power: 3 W  
Play time: 5-6 h  
Charging time: 1.5 h  
Weight: 205 g

IT

**Specifiche tecniche:**  
Bluetooth®: 5.4  
Profilii supportati: A2DP AVRCP AVTCP HFP  
Portata: 10 m  
Bluetooth® Frequency Range: 2402-2480MHz  
Voltaggio batteria: 3.7V  
Capacità batteria: 400 mAh  
Voltaggio porta USB-C: 5V  
Corrente porta USB-C: 0.5A  
EIRP: 2.511mW  
WATT: 3 W  
Play Time: 5-6 h  
Ricarica: 1.5 h  
Peso: 205 g

FR

**Spécifications techniques:**  
Version Bluetooth® : 5.4  
Profilis pris en charge : A2DP AVRCP AVTCP HFP  
Portée : 10 m  
Plage de fréquences Bluetooth® : 2402-2480 MHz  
Tension de la batterie : 3.7 V  
Capacité de la batterie : 400 mAh  
Tension du port USB-C : 5 V  
Courant du port USB-C : 0.5 A  
EIRP maximale : 2.511mW  
Puissance : 3 W  
Autonomie en lecture : 5-6 h  
Temps de charge : 1.5 h  
Poids : 205 g

DE

**Technische Eigenschaften:**  
Bluetooth® Version: 5.4  
Unterstützte Profile: A2DP AVRCP AVTCP HFP  
Reichweite: 10 m  
Bluetooth® Frequenzbereich: 2402-2480 MHz  
Batteriespannung: 3.7 V  
Batteriekapazität: 400 mAh  
USB-C-Port Spannung: 5 V  
USB-C-Port Strom: 0.5 A  
Maximale EIRP: 2.511mW  
Leistung: 3 W  
Wiedergabezeit: 5-6 h  
Ladezeit: 1.5 h  
Gewicht: 205 g

ES

**Especificaciones técnicas:**  
Bluetooth® version: 5.4  
Supported profiles: A2DP AVRCP AVTCP HFP  
Range: 10 m  
Bluetooth® frequency range: 2402-2480 MHz  
Battery voltage: 3.7 V  
Battery capacity: 400 mAh  
USB-C port voltage: 5 V  
USB-C port current: 0.5 A  
Maximum EIRP: 2.511mW  
Power: 3 W  
Play time: 5-6 h  
Charging time: 1.5 h  
Weight: 205 g

TR

**Teknik Özellikler:**  
Bluetooth® version: 5.4  
Supported profiles: A2DP AVRCP AVTCP HFP  
Range: 10 m  
Bluetooth® frequency range: 2402-2480 MHz  
Battery voltage: 3.7 V  
Battery capacity: 400 mAh  
USB-C port voltage: 5 V  
USB-C port current: 0.5 A  
Maximum EIRP: 2.511mW  
Power: 3 W  
Play time: 5-6 h  
Charging time: 1.5 h  
Weight: 205 g

NL

**Technische gegevens:**  
Bluetooth® version: 5.4  
Supported profiles: A2DP AVRCP AVTCP HFP  
Range: 10 m  
Bluetooth® frequency range: 2402-2480 MHz  
Battery voltage: 3.7 V  
Battery capacity: 400 mAh  
USB-C port voltage: 5 V  
USB-C port current: 0.5 A  
Maximum EIRP: 2.511mW  
Power: 3 W  
Play time: 5-6 h  
Charging time: 1.5 h  
Weight: 205 g

FI

**Kuulokkeen tekniset:**  
Bluetooth® version: 5.4  
Supported profiles: A2DP AVRCP AVTCP HFP  
Range: 10 m  
Bluetooth® frequency range: 2402-2480 MHz  
Battery voltage: 3.7 V  
Battery capacity: 400 mAh  
USB-C port voltage: 5 V  
USB-C port current: 0.5 A  
Maximum EIRP: 2.511mW  
Power: 3 W  
Play time: 5-6 h  
Charging time: 1.5 h  
Weight: 205 g

SV

**Techniska specifikationer:**  
Bluetooth® version: 5.4  
Supported profiles: A2DP AVRCP AVTCP HFP  
Range: 10 m  
Bluetooth® frequency range: 2402-2480 MHz  
Battery voltage: 3.7 V  
Battery capacity: 400 mAh  
USB-C port voltage: 5 V  
USB-C port current: 0.5 A  
Maximum EIRP: 2.511mW  
Power: 3 W  
Play time: 5-6 h  
Charging time: 1.5 h  
Weight: 205 g

PL

**Specyfikacja techniczna:**  
Bluetooth® version: 5.4  
Supported profiles: A2DP AVRCP AVTCP HFP  
Range: 10 m  
Bluetooth® frequency range: 2402-2480 MHz  
Battery voltage: 3.7 V  
Battery capacity: 400 mAh  
USB-C port voltage: 5 V  
USB-C port current: 0.5 A  
Maximum EIRP: 2.511mW  
Power: 3 W  
Play time: 5-6 h  
Charging time: 1.5 h  
Weight: 205 g

DA

**Tekniske specifikationer:**  
Bluetooth® version: 5.4  
Supported profiles: A2DP AVRCP AVTCP HFP  
Range: 10 m  
Bluetooth® frequency range: 2402-2480 MHz  
Battery voltage: 3.7 V  
Battery capacity: 400 mAh  
USB-C port voltage: 5 V  
USB-C port current: 0.5 A  
Maximum EIRP: 2.511mW  
Power: 3 W  
Play time: 5-6 h  
Charging time: 1.5 h  
Weight: 205 g

NO

**Tekniske egenskaper:**  
Bluetooth® version: 5.4  
Supported profiles: A2DP AVRCP AVTCP HFP  
Range: 10 m  
Bluetooth® frequency range: 2402-2480 MHz  
Battery voltage: 3.7 V  
Battery capacity: 400 mAh  
USB-C port voltage: 5 V  
USB-C port current: 0.5 A  
Maximum EIRP: 2.511mW  
Power: 3 W  
Play time: 5-6 h  
Charging time: 1.5 h  
Weight: 205 g

