

# Memory Module Specifications

## KF576RH40RBK4-128

128GB ( 32GB 1Rx8 4G x 80-Bit x 4 pcs )

PC5-7600 CL40 Registered EC8 288-Pin DIMM



### DEFAULT SPECIFICATIONS

CL	52 cycles
Row Cycle Time (tRCmin)	48ns(min.)
Refresh to Active/Refresh Command Time (tRFCmin)	410ns(min.)
Row Active Time (tRASmin)	32ns(min.)
Row Precharge Time (tRPmin)	16ns(min.)
UL Rating	94 V - 0
Operating Temperature	0° C to +95° C
Storage Temperature	-55° C to +100° C

### DESCRIPTION

Kingston FURY KF576RH40RBK4-128 is a kit of four 4G x 80-bit (32GB) DDR5-7600 CL40 SDRAM (Synchronous DRAM) 1Rx8, ECC memory module, based on ten 4G x 8-bit FBGA components per module. The module supports Intel® Extreme Memory Profiles (Intel® XMP) 3.0 and AMD® EXPO v 1.1 . Each module has been tested to run at DDR5-7600 at a low latency timing of 40-52-52 at 1.4V. The SPDs are programmed to JEDEC standard latency DDR5-6400 timing of 52-52-52 at 1.1V. Each 288-pin DIMM uses gold contact fingers. The JEDEC standard electrical and mechanical specifications are as follows:

### DEFAULT FEATURES

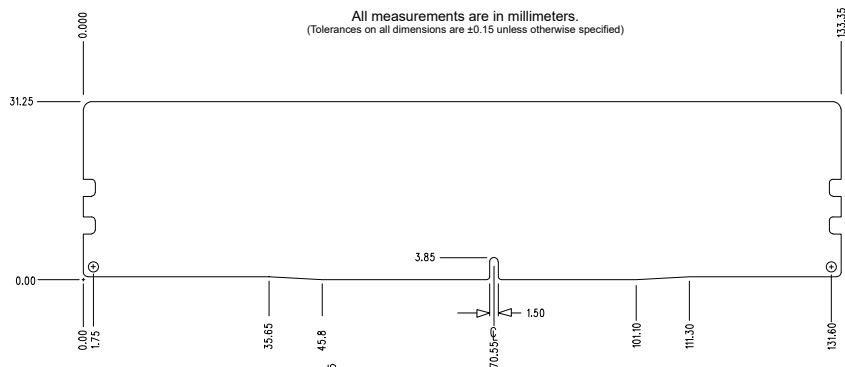
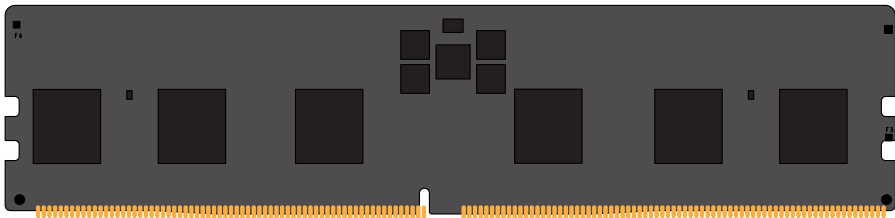
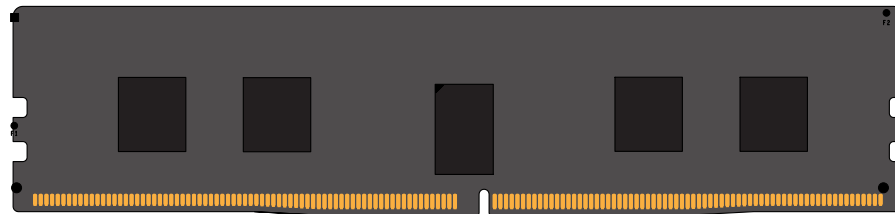
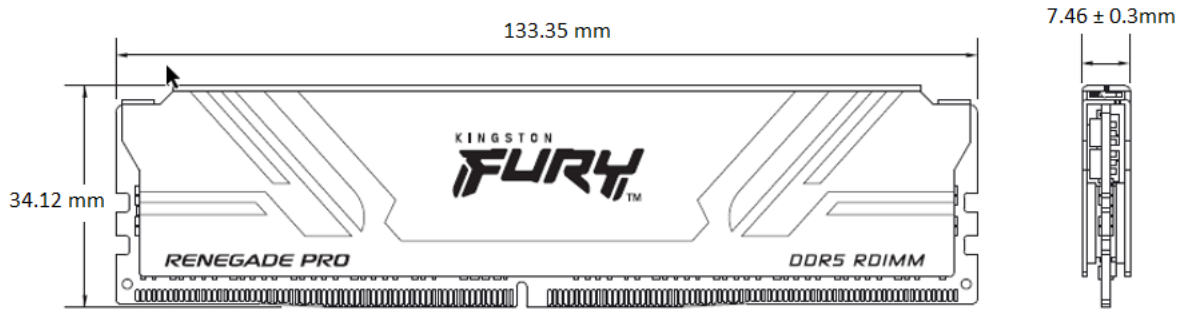
- Power Supply: VDD = 1.1V Typical
- VDDQ = 1.1V Typical
- VPP = 1.8V Typical
- VDDSPD = 1.8V to 2.0V
- On-Die ECC
- x80 ECC (x40, 2 independent I/O sub channels)
- 32 internal banks
- Hard/Soft Post Package Repair
- Sideband access with I3C/I2C
- PCB: Height 1.23" (31.25mm)
- RoHS Compliant and Halogen-Free

### FACTORY TIMING PARAMETERS

- Default (JEDEC): DDR5-6400 CL52-52-52 @1.1V
- EXPO Profile #0: DDR5-7600 CL40-52-52 @1.4V
- EXPO Profile #1: DDR5-7200 CL38-50-50 @1.4V
- XMP Profile #1: DDR5-7600 CL40-52-52 @1.4V
- XMP Profile #2: DDR5-7200 CL38-50-50 @1.4V

Continued >>

## MODULE DIMENSIONS



The product images shown are for illustration purposes only and may not be an exact representation of the product. Kingston reserves the right to change any information at anytime without notice.

FOR MORE INFORMATION, GO TO [KINGSTON.COM](http://KINGSTON.COM)

All Kingston products are tested to meet our published specifications. Some motherboards or system configurations may not operate at the published Kingston FURY memory speeds and timing settings. Kingston does not recommend that any user attempt to run their computers faster than the published speed. Overclocking or modifying your system timing may result in damage to computer components.