


Dell 27 QHD Monitor

SE2726D

Teardown Instructions

Notes, cautions, and warnings

 **NOTE:** A NOTE indicates important information that helps you make better use of your product.

 **CAUTION:** A CAUTION indicates either potential damage to hardware or loss of data and tells you how to avoid the problem.

 **WARNING:** A WARNING indicates a potential for property damage, personal injury, or death.

Contents

Safety instructions	4
Before working inside your monitor	4
After working inside your monitor	4
Disassembly and reassembly	5
Recommended tools	5
Screw list	5
Stand	6
Removing the stand	6
Installing the stand	7
Back cover	8
Removing the back cover	8
Installing the back cover	10
Keypad board and LED board	12
Removing the keypad board and LED board	12
Installing the keypad board and LED board	13
Metal shield	14
Removing the metal shield	14
Installing the metal shield	16
System board and power board	18
Removing the system board and power board	18
Installing the system board and power board	20
Middle frame	22
Removing the middle frame	22
Installing the middle frame	23
Regulatory information	24
FCC notices (U.S. Only) and other regulatory information	24
EU product database for energy label and product information sheet	24
Contacting Dell	25
Revision History	26

Safety instructions

Use the following safety guidelines to protect your monitor from potential damage and to ensure your personal safety. Unless otherwise noted, each procedure in this document assumes that you have read the safety information that shipped with your monitor.

NOTE: Before using the monitor, read the safety information that shipped with your monitor and printed on the product. Keep the documentation at a secure location for future reference.

WARNING: Use of controls, adjustments, or procedures other than those specified in this documentation may result in exposure to shock, electrical hazards and/or mechanical hazards.

CAUTION: The possible long-term effect of listening to audio at high volume through the headphones (on monitors that support it) may cause damage to your hearing ability.

- Place the monitor on a solid surface and handle it carefully. The screen is fragile and can be damaged if dropped or hit with a sharp object.
- Ensure that your monitor is electrically rated to operate with the AC power available in your location.
- Keep the monitor in room temperature. Excessive cold or hot conditions can have an adverse effect on the liquid crystal of the display.
- Connect the power cable from the monitor to a wall outlet that is near and accessible. See Connecting your monitor.
- Do not place and use the monitor on a wet surface or near water.
- Do not subject the monitor to severe vibration or high impact conditions. For example, do not place the monitor inside a car trunk.
- Unplug the monitor when it is going to be left unused for an extended period.
- To avoid electric shock, do not attempt to remove any cover or touch the inside of the monitor.
- Read these instructions carefully. Keep this document for future reference. Follow all warnings and instructions that are marked on the product.
- Certain monitors can be wall mounted using the VESA mount that is sold separately. Ensure to use the correct VESA specifications as mentioned in the wall mounting section of the User's Guide.

For information about safety instructions, see the *Safety, Environmental and Regulatory Information (SERI)* document that is shipped with your monitor.

Before working inside your monitor

Steps

1. Save and close all open files and exit all open applications.
 2. Turn off your monitor.
 3. Disconnect your monitor and all attached devices from their electrical outlets.
 4. Disconnect all attached network devices and peripherals, such as keyboard, mouse, and dock from your monitor.
- CAUTION:** To disconnect a network cable, first unplug the cable from your monitor and then unplug the cable from the network device.
5. Remove any media card and optical disc from your monitor, if applicable.

After working inside your monitor

CAUTION: Leaving stray or loose screws inside your monitor may severely damage your monitor.

Steps

1. Replace all screws and ensure that no stray screws remain inside your monitor.
2. Connect any external devices, peripherals, or cables you removed before working on your monitor.
3. Replace any media cards, discs, or any other parts that you removed before working on your monitor.
4. Connect your monitor and all attached devices to their electrical outlets.
5. Turn on your monitor.

Disassembly and reassembly

⚠ CAUTION: The information in this section is intended for authorized service technicians in the EMEA region. Dell prohibits users from disassembling the monitor, and any damage caused by unauthorized servicing will not be covered under the warranty.







Recommended tools

- Screwdriver (Phillips-head, Hexagonal head)
- Plastic scribe

Screw list

- ⓘ **NOTE:** When removing screws from a component, it is recommended to note the screw type, the quantity of screws, and then place them in a screw storage box. This is to ensure that the correct number of screws and correct screw type is restored when the component is replaced.
- ⓘ **NOTE:** Some computers have magnetic surfaces. Ensure that the screws are not left attached to such surfaces when replacing a component.
- ⓘ **NOTE:** Screw color may vary with the configuration ordered.

Table 1. Screw list.

Component	Screw type	Quantity	Screw images
Back cover	P3x4	2	
Keypad board and LED board	Q3x4	4	
Metal shield	M3x3.8	2	
System board and power board	D3x6	6	
Power board	M4x6	1	
Middle frame	M3x3.8	13	

Stand

Removing the stand

Prerequisites

Following the procedure in [Before working inside your monitor](#).

About this task

The following image indicates the location of the stand and provides a visual representation of the removal procedure.

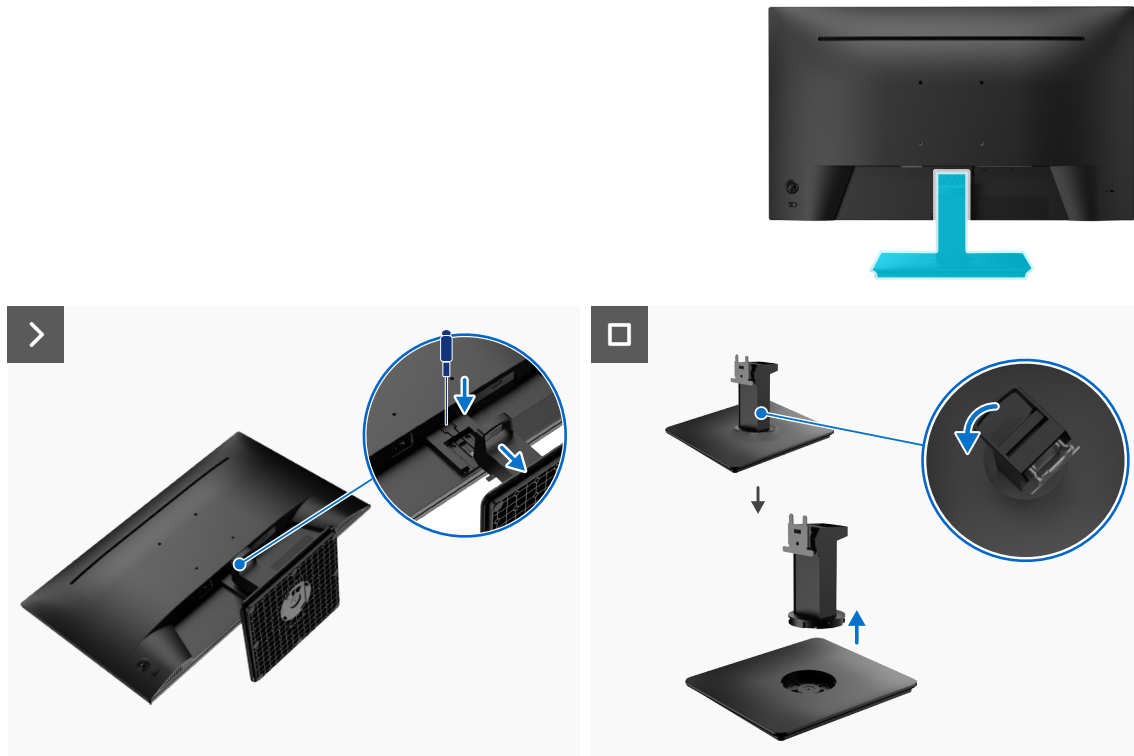


Figure 1. Removing the stand

Steps

1. Place the monitor on a soft cloth at the edge of a flat surface.
2. Use a long, thin screwdriver to press the release button and pull the stand assembly away from the monitor.
3. Grasp the base bracket, rotate it to the left to the open position, and gently pull it up.

Installing the stand

Prerequisites

If you are replacing a component, remove the existing component before performing the installation procedure.

About this task

The following image indicates the location of the stand and provides a visual representation of the installation procedure.

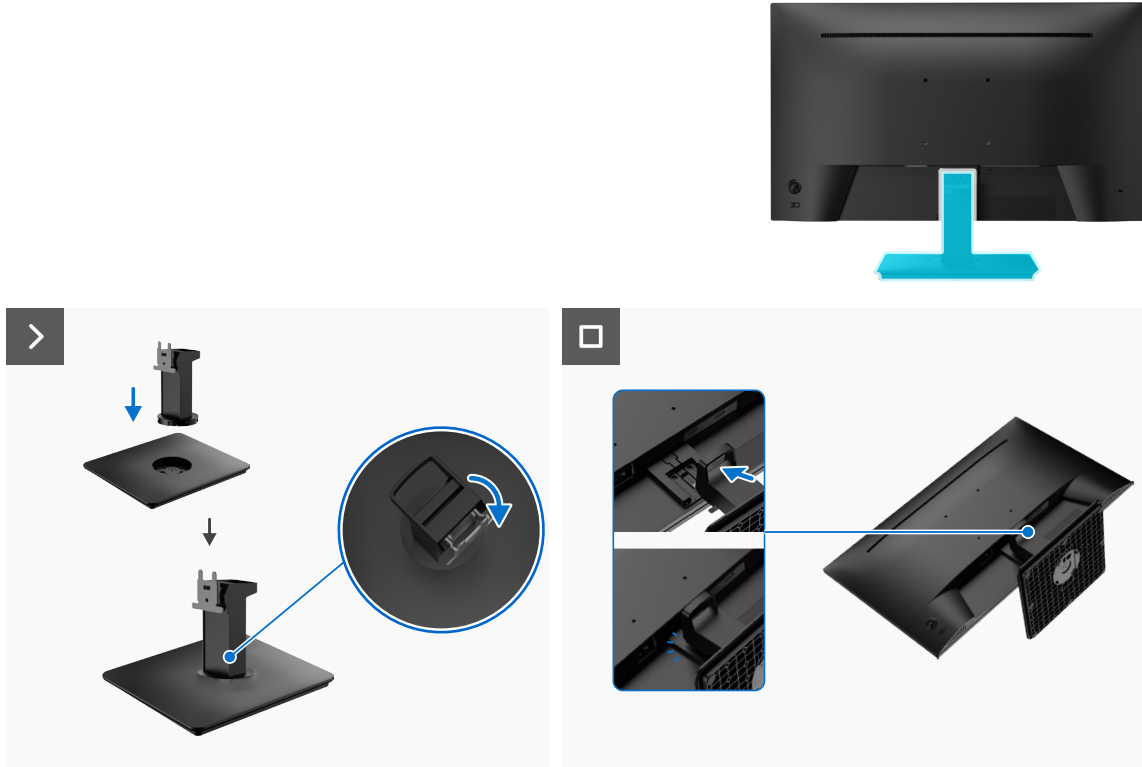


Figure 2. Installing the stand

Steps

1. Gently insert the bracket into the base and rotate it to the right until it clicks into place.
2. Align the bracket on the stand riser with the grooves on the back of the monitor.
3. Slide the stand assembly until it snaps into place.

Next steps

Following the procedure in [After working inside your monitor](#).

Back cover

Removing the back cover

Prerequisites

1. Following the procedure in [Before working inside your monitor](#).
2. Removing the [stand](#).

About this task

The following image indicates the location of the back cover and provides a visual representation of the removal procedure.



Figure 3. Removing the back cover

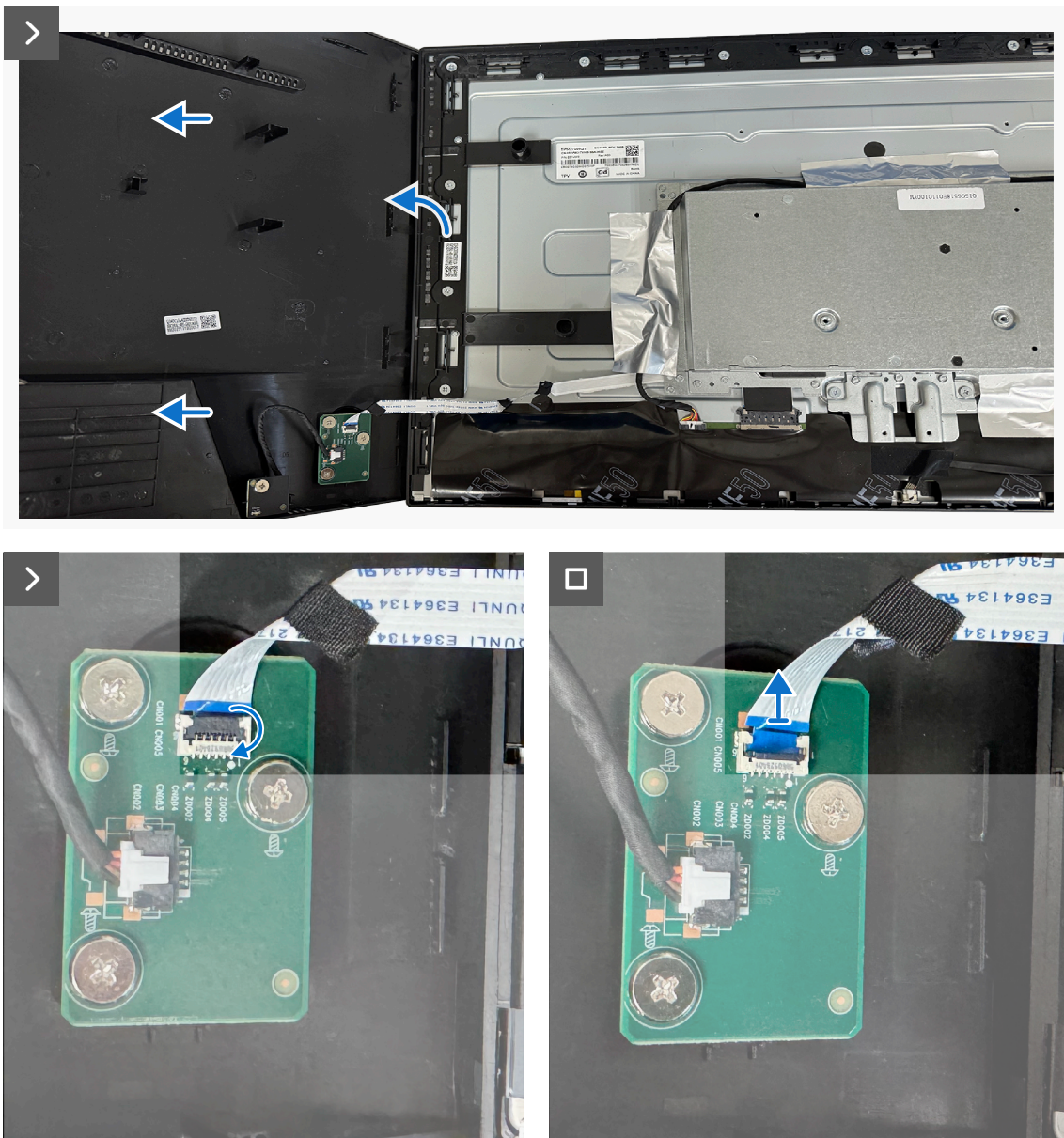


Figure 4. Removing the back cover

Steps

1. Remove the two screws (P3x4) that secure the back cover to the chassis assembly.
2. Using a plastic scribe, pry the back cover starting from the bottom edge of the monitor.
3. Lift the back cover from the right edge and disconnect the keypad-board cable from the connector on the system board.
4. Lift and remove the back cover away from the monitor.

Installing the back cover

Prerequisites

If you are replacing a component, remove the existing component before performing the installation procedure.

About this task

The following image indicates the location of the back cover and provides a visual representation of the installation procedure.



Figure 5. Installing the back cover



Figure 6. Installing the back cover

Steps

1. Connect the keypad-board cable to the connector on the system board.
 2. Align the screw holes on the back cover with the screw holes on the monitor, and gently press along the sides to snap the back cover into place.
- NOTE:** Ensure that the screw holes on the back cover align with those on the chassis before applying pressure.
3. Replace the two screws (P3x4) to secure the back cover to the chassis assembly.

Next steps

1. Install the [stand](#).
2. Following the procedure in [After working inside your monitor](#).

Keypad board and LED board

Removing the keypad board and LED board

Prerequisites

1. Following the procedure in [Before working inside your monitor](#).
2. Removing the [stand](#).
3. Removing the [back cover](#).

About this task

The following image indicates the location of the keypad board and LED board and provides a visual representation of the removal procedure.

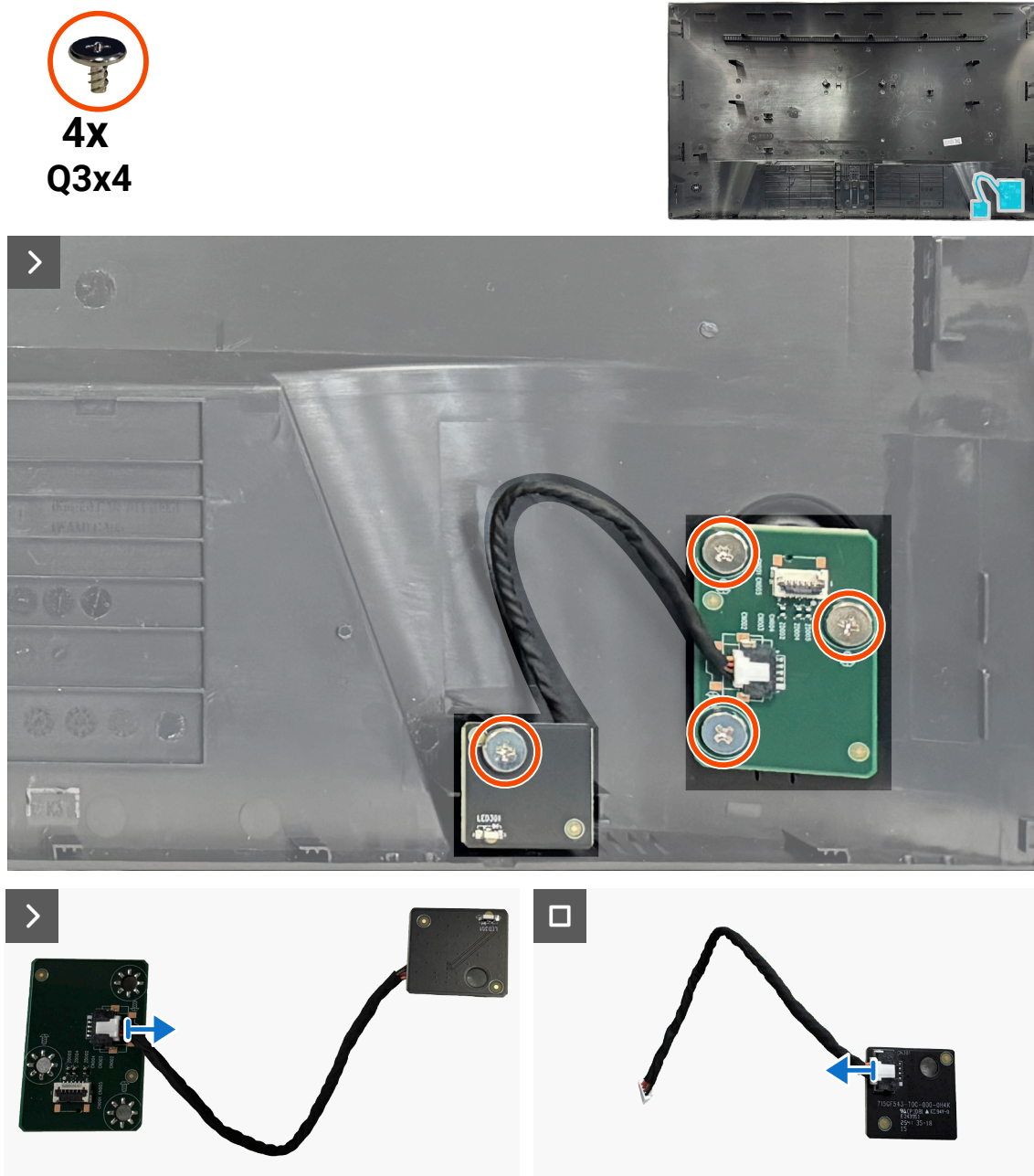


Figure 7. Removing the keypad board and LED board

Steps

1. Remove the four screws (Q3x4) that secure the keypad board and LED board to the back cover.
2. Remove the LED-board cable from the connectors on the keypad board and LED board.

Installing the keypad board and LED board

Prerequisites

If you are replacing a component, remove the existing component before performing the installation procedure.

About this task

The following image indicates the location of the keypad board and LED board and provides a visual representation of the installation procedure.

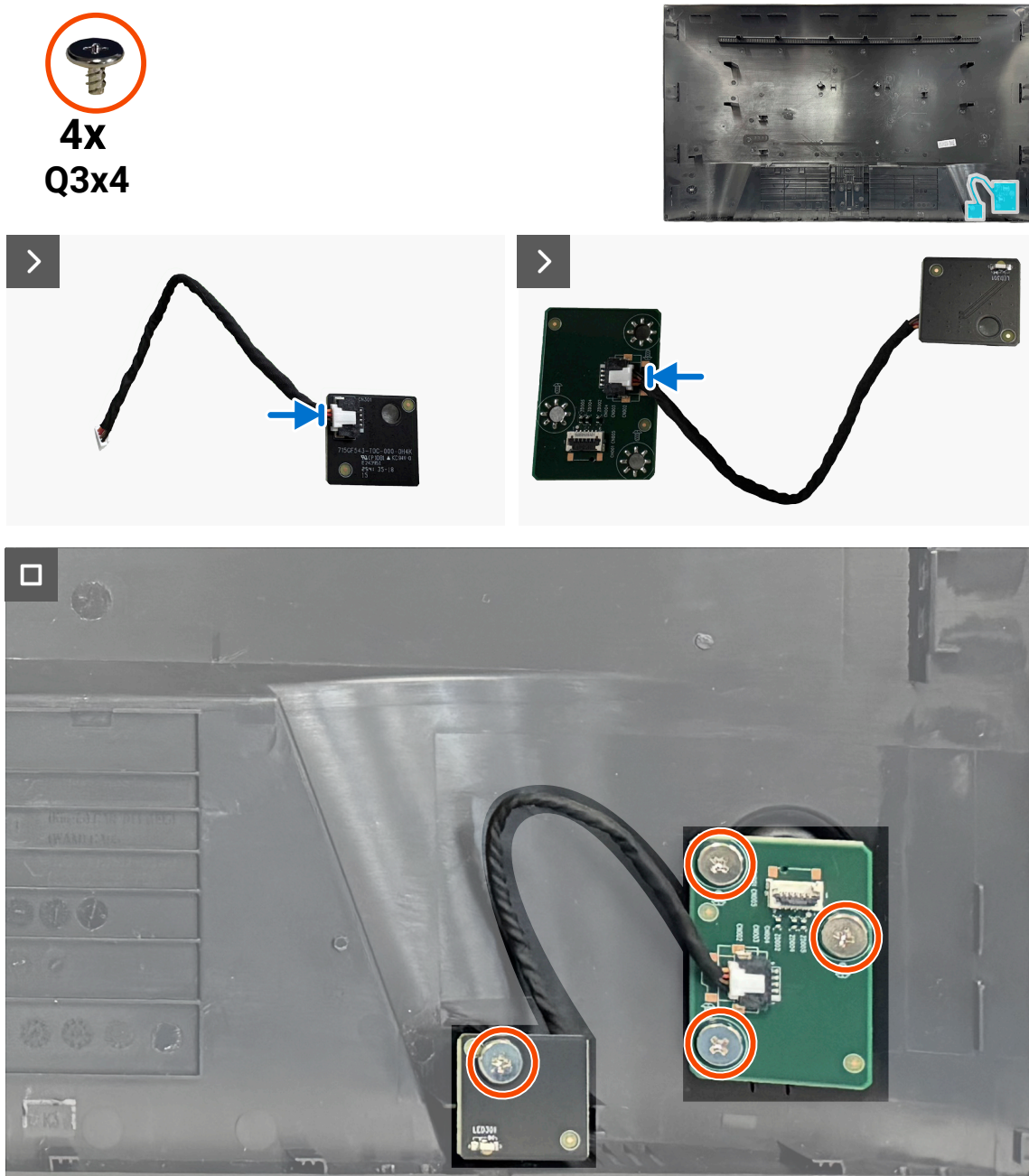


Figure 8. Installing the keypad board and LED board

Steps

1. Connect the LED-board cable to the connectors on the LED board and key board.
2. Replace the four screws (Q3x4) to secure the keypad board and LED board to the back cover.

Next steps

1. Install the [back cover](#).
2. Install the [stand](#).
3. Following the procedure in [After working inside your monitor](#).

Metal shield

Removing the metal shield

Prerequisites

1. Following the procedure in [Before working inside your monitor](#).
2. Removing the [stand](#).
3. Removing the [back cover](#).

About this task

The following image indicates the location of the metal shield and provides a visual representation of the removal procedure.

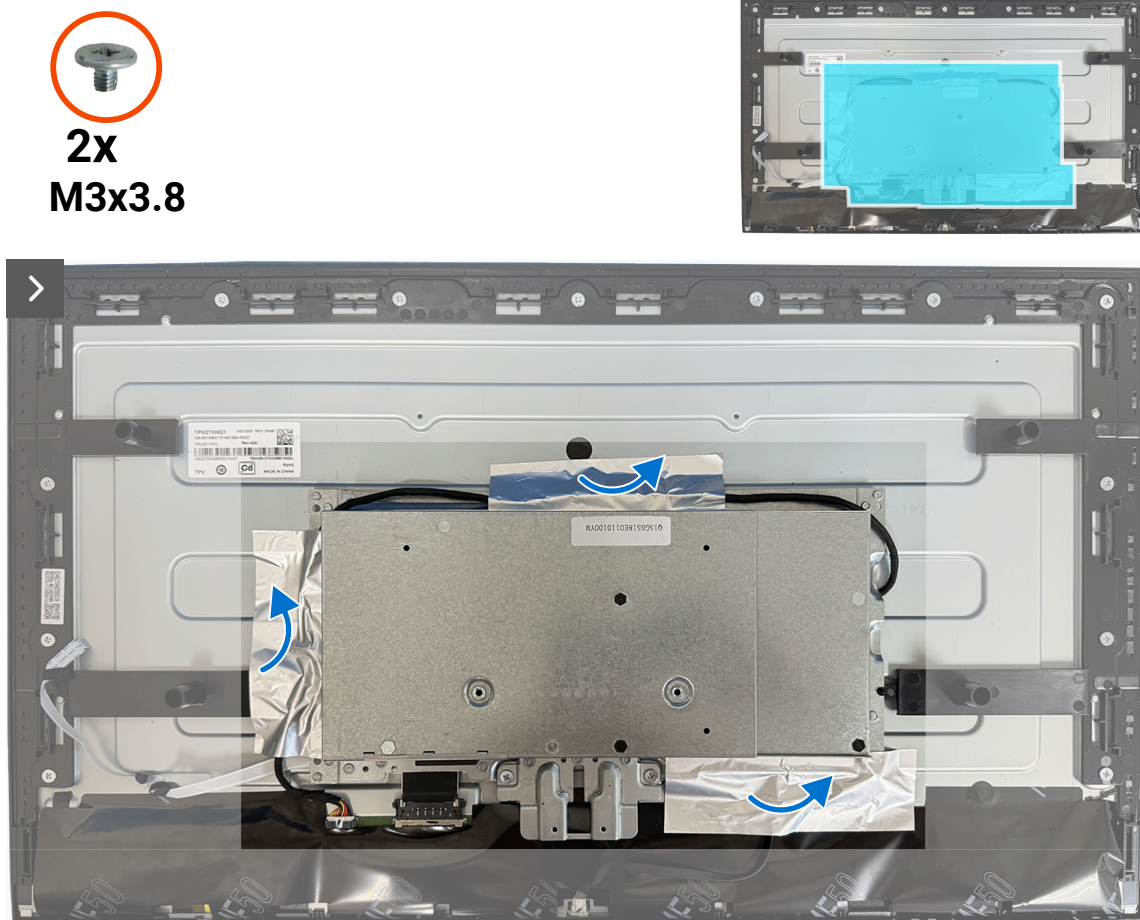


Figure 9. Removing the metal shield

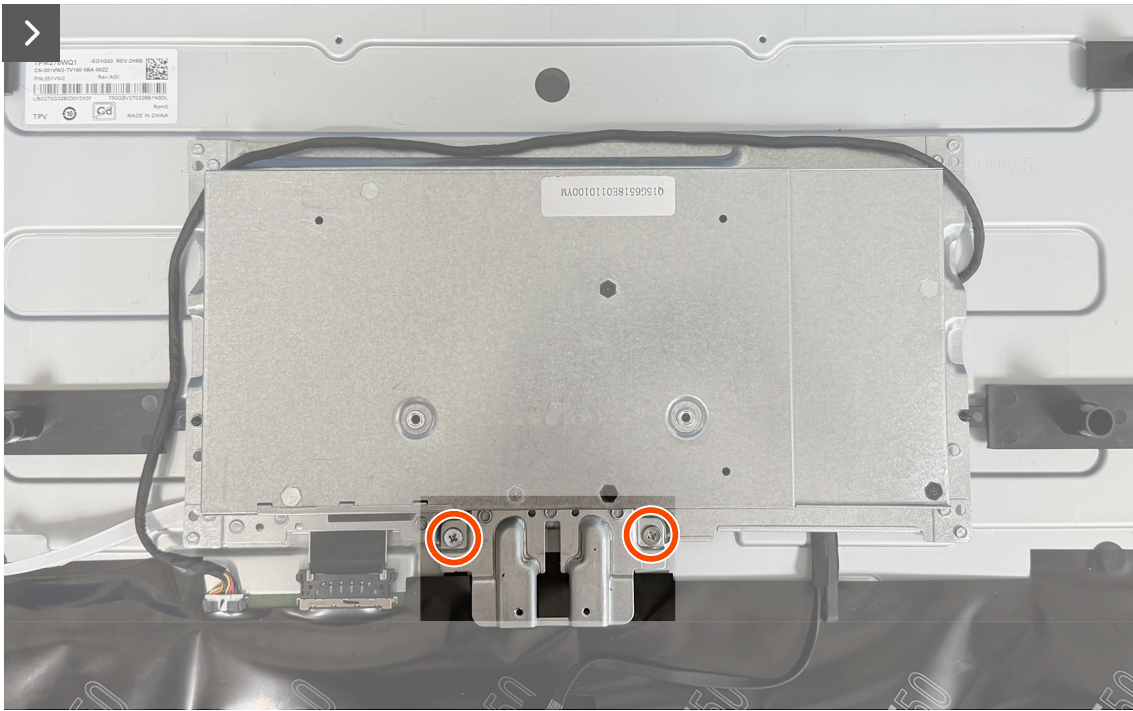


Figure 10. Removing the metal shield

Steps

1. Peel the aluminum foil that secure the lightbar cable and the metal shield to the display panel.
2. Remove the two screws(M3x3.8) that secure the metal shield to the display panel.
3. Disconnect the two display-panel cables and lightbar cable from the connectors on the display panel.

Installing the metal shield

Prerequisites

If you are replacing a component, remove the existing component before performing the installation procedure.

About this task

The following image indicates the location of the metal shield and provides a visual representation of the installation procedure.



2X
M3x3.8

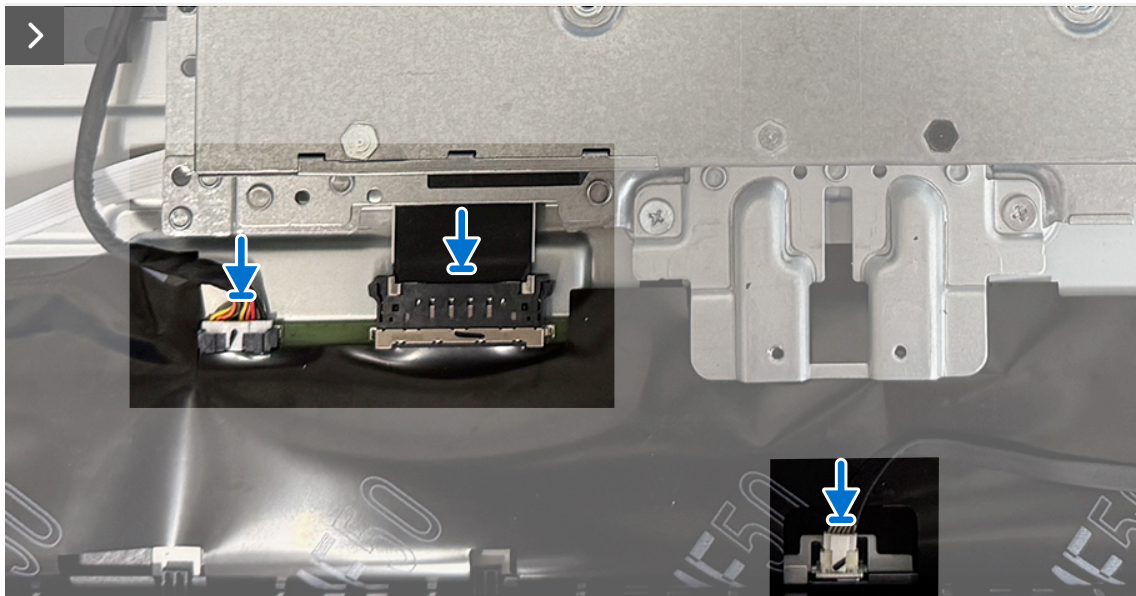


Figure 11. Installing the metal shield

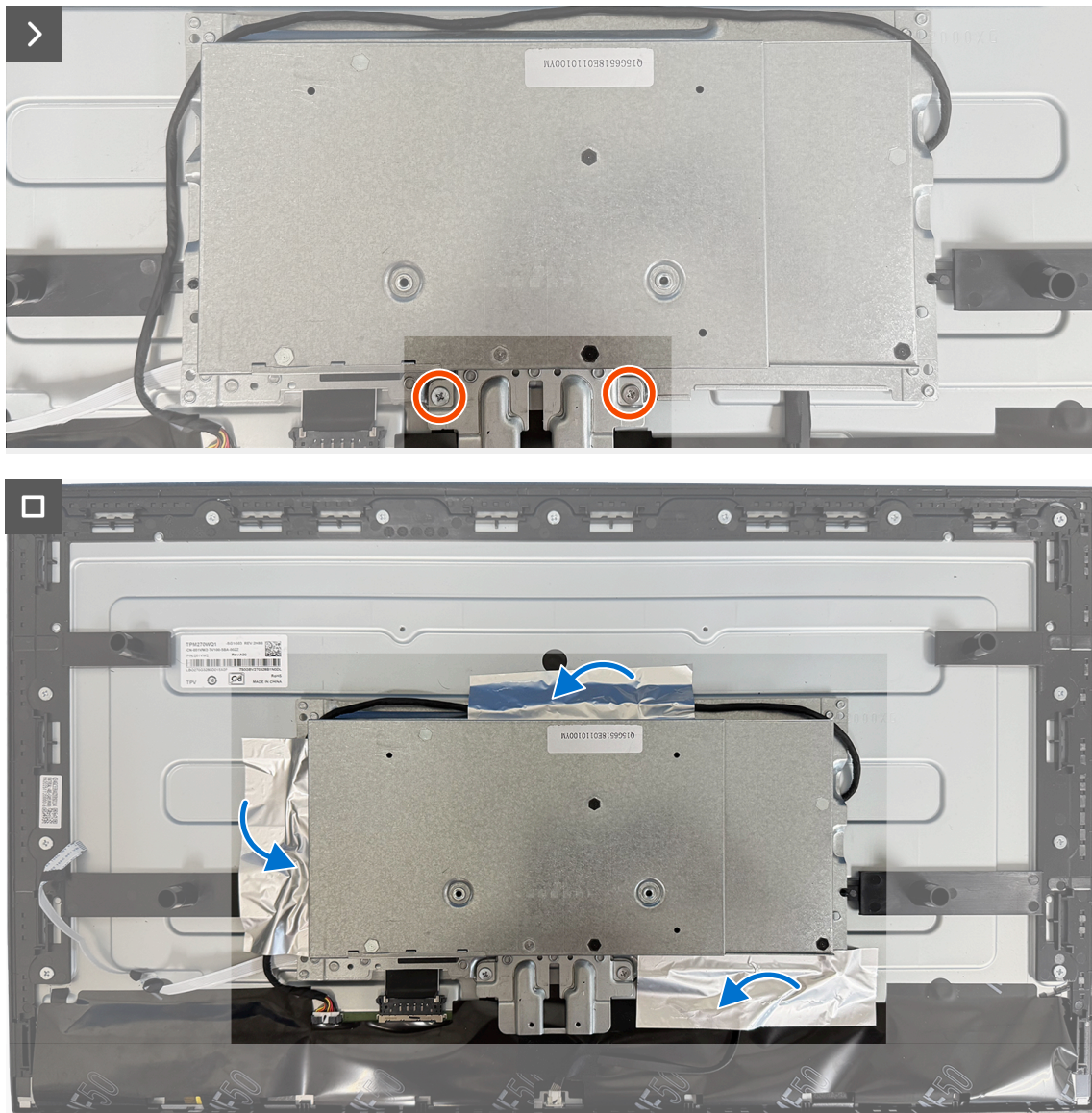


Figure 12. Installing the metal shield

Steps

1. Lift the metal shield partially and connect the two display-panel cables and lightbar cable to the connectors on the display panel.
2. Align the screw holes on the metal shield with the screw holes on the display panel.
3. Replace the two screws (M3x3.8) to secure the metal shield to the display panel.
4. Adhere the aluminum foil with secure the lightbar cable and the metal shield to the display panel.

Next steps

1. Install the [back cover](#).
2. Install the [stand](#).
3. Following the procedure in [After working inside your monitor](#).

System board and power board

Removing the system board and power board

Prerequisites

1. Following the procedure in [Before working inside your monitor](#).
2. Removing the [stand](#).
3. Removing the [back cover](#).
4. Removing the [metal shield](#).

About this task

The following image indicates the location of the system board and power board and provides a visual representation of the removal procedure.

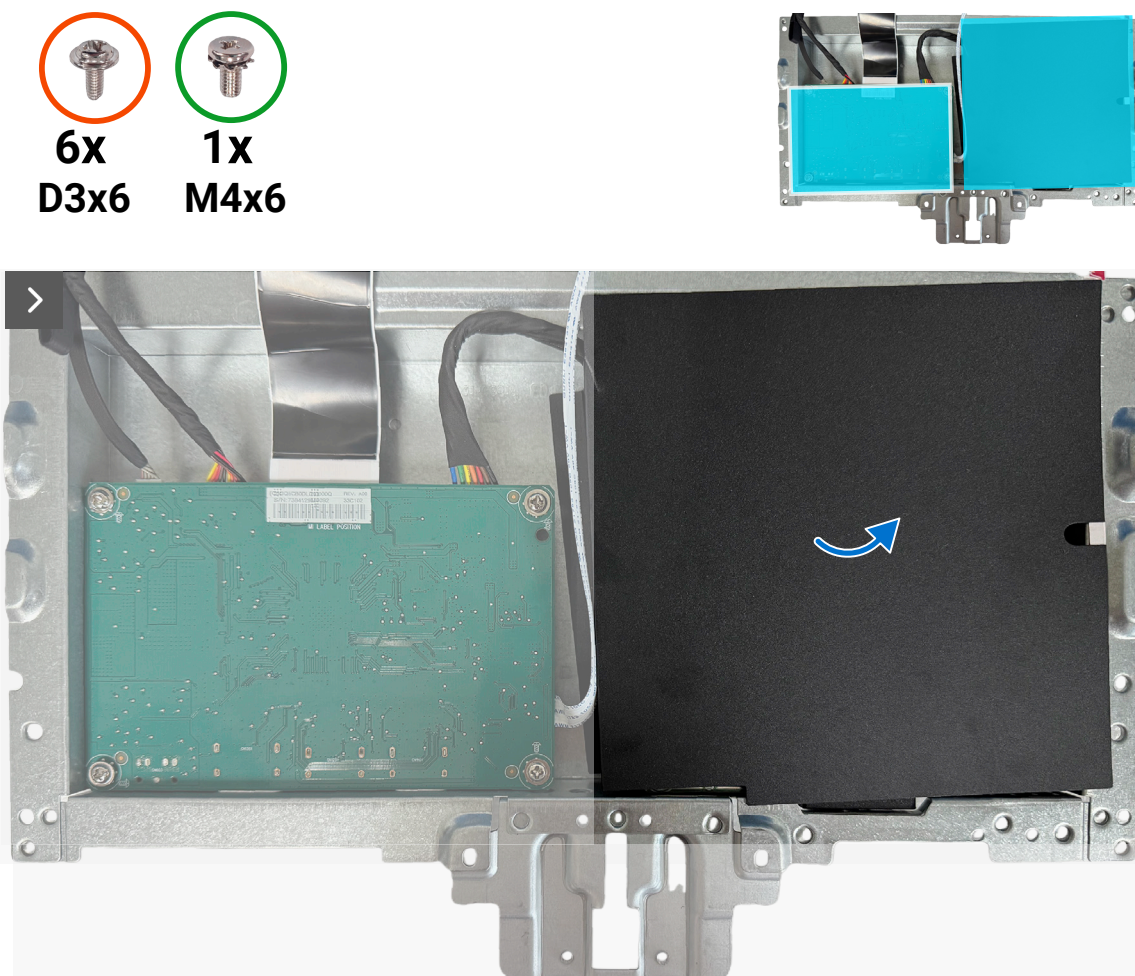


Figure 13. Removing the system board and power board

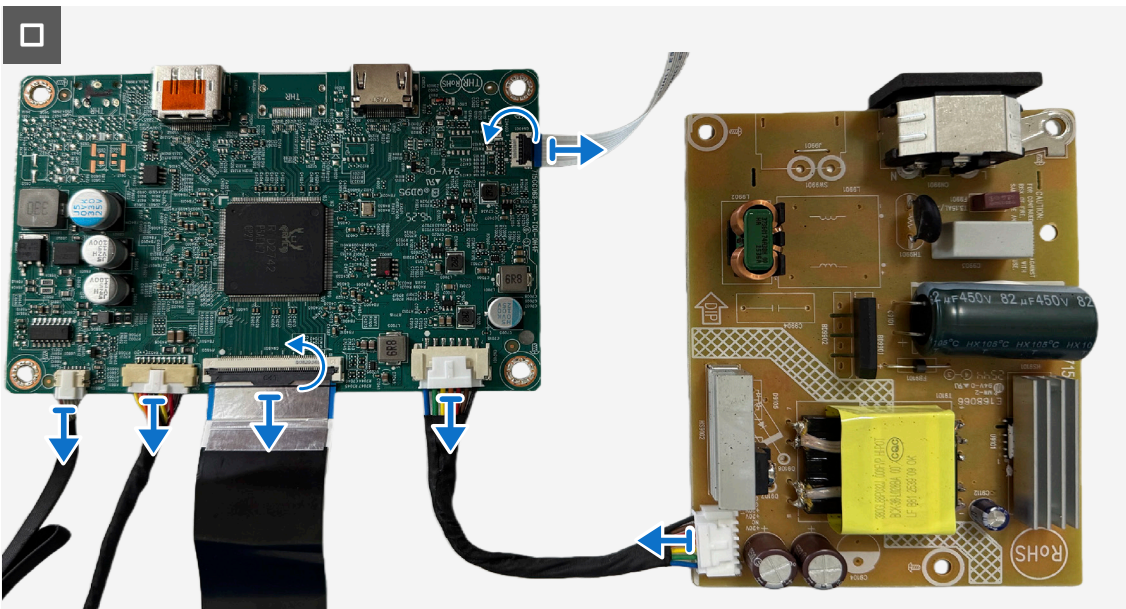
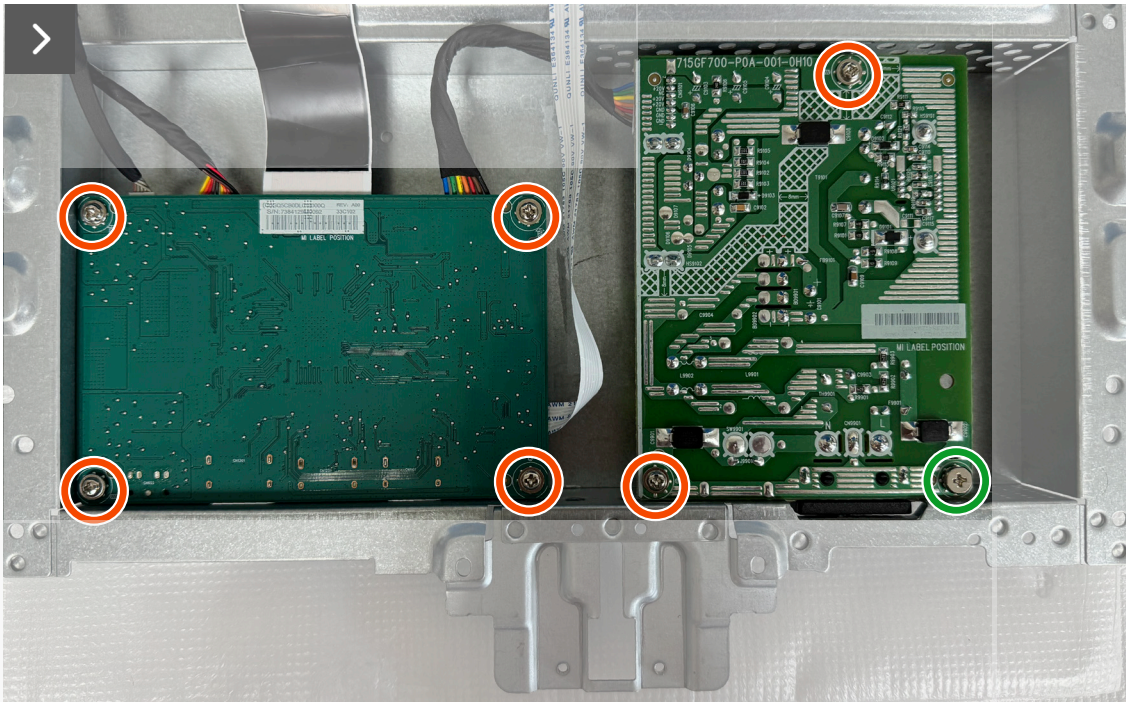


Figure 14. Removing the system board and power board

Steps

1. Remove the Mylar sheet from the power board.
2. Remove the six screws (D3x6) and the screw (M4x6) that secure the system board and power board to the metal shield.
3. Disconnect the cables from the connectors on the system board and power board.

Installing the system board and power board

Prerequisites

If you are replacing a component, remove the existing component before performing the installation procedure.

About this task

The following image indicates the location of the system board and power board and provides a visual representation of the installation procedure.

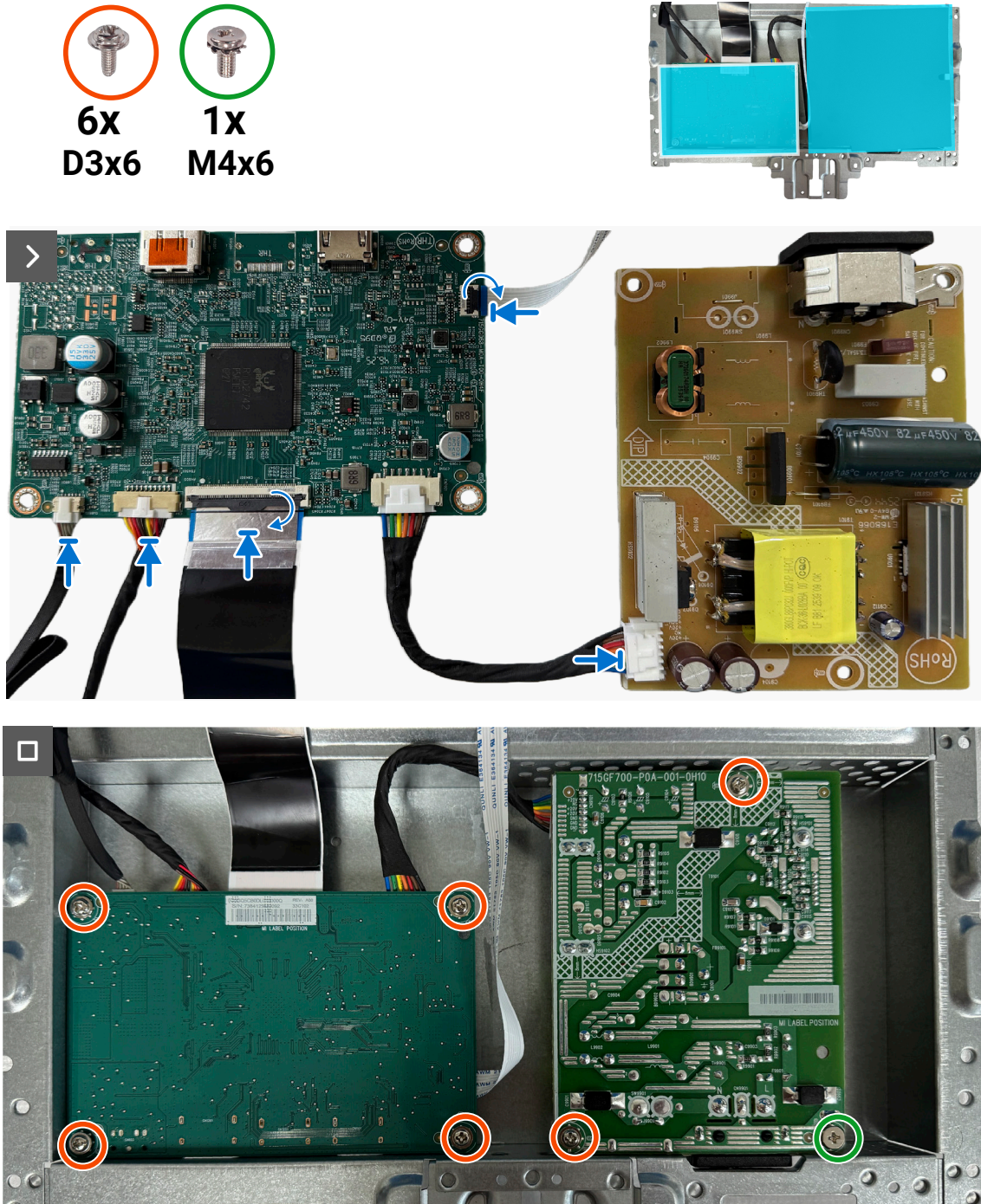


Figure 15. Installing the system board and power board



Figure 16. Installing the system board and power board

Steps

1. Connect the cables to the connectors on the system board and power board.
2. Replace the six screws (D3x6) and the screw (M4x6) to secure the system board and power board to the metal shield.
3. Place the Mylar sheet on the power board.

Next steps

1. Install the [metal shield](#).
2. Install the [back cover](#).
3. Install the [stand](#).
4. Following the procedure in [After working inside your monitor](#).

Middle frame

Removing the middle frame

Prerequisites

1. Following the procedure in [Before working inside your monitor](#).
2. Removing the [stand](#).
3. Removing the [back cover](#).
4. Removing the [metal shield](#).

About this task

The following image indicates the location of the middle frame and provides a visual representation of the removal procedure.



Figure 17. Removing the middle frame

Steps

1. Remove the thirteen screws (M3x3.8) that secure the middle frame to the display panel.
2. Lift and remove the middle frame away from the display panel.

Installing the middle frame

Prerequisites

If you are replacing a component, remove the existing component before performing the installation procedure.

About this task

The following image indicates the location of the middle frame and provides a visual representation of the installation procedure.



Figure 18. Installing the middle frame

Steps

1. Align the middle frame and display panel.
2. Replace the thirteen screws (M3x3.8) to secure the middle frame to the display panel.

Next steps

1. Install the [metal shield](#).
2. Install the [back cover](#).
3. Install the [stand](#).
4. Following the procedure in [After working inside your monitor](#).

Regulatory information

FCC notices (U.S. Only) and other regulatory information

For FCC notices and other regulatory information, see the regulatory compliance website at [Dell Regulatory Compliance Home Page](#).

EU product database for energy label and product information sheet

For more information about the energy labeling regulations, see the [European Product Registry for Energy Labeling](#).

Contacting Dell

To contact Dell for sales, technical support, or customer service issues, see [Contact Support at Dell Support Site](#).

- ① **NOTE:** Availability varies by country, region, or product, and some services may not be available in your location.
- ① **NOTE:** If you do not have an active Internet connection, you can find contact information about your purchase invoice, packing slip, bill, or Dell product catalog.

Revision History

The following table provides the revision history of this document:

Table 2. Revision History.

Revision	Date	Description
A00	January 2026	Original publish date.