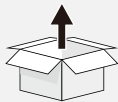


Lenovo
ThinkPad

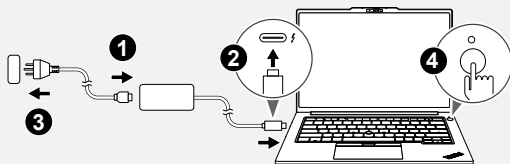
ThinkPad P14s Gen 7
ThinkPad P16s Gen 5

Lenovo

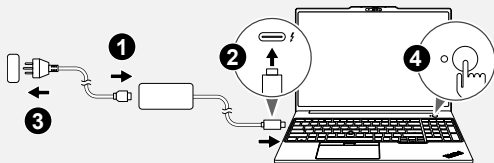
Get Started



ThinkPad P14s Gen 7



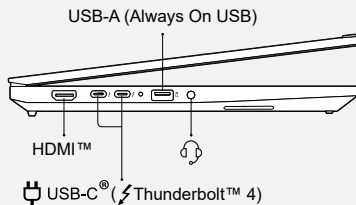
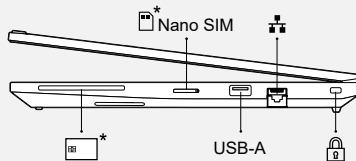
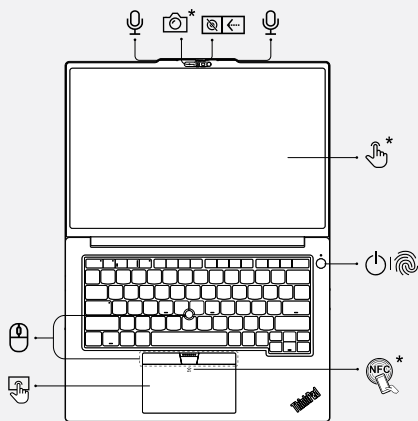
ThinkPad P16s Gen 5



* For selected models

Overview

ThinkPad P14s Gen 7

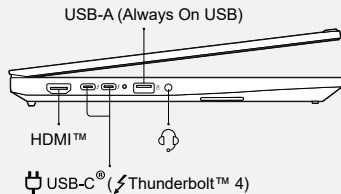
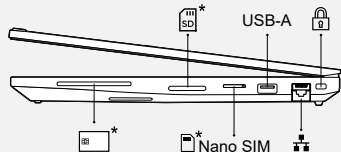
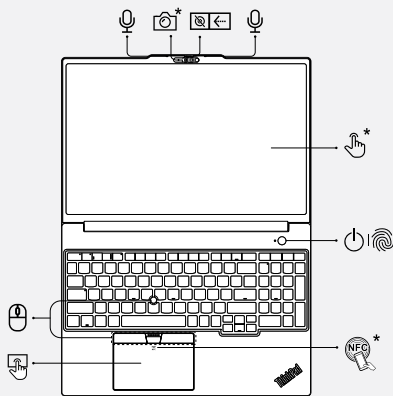


Read the statement on USB transfer rate in online manuals. To access online manuals, refer to methods mentioned on the back cover.

* For selected models

Overview

ThinkPad P16s Gen 5



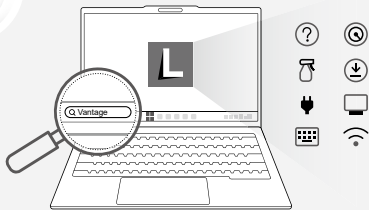
Read the statement on USB transfer rate in online manuals. To access online manuals, refer to methods mentioned on the back cover.

* For selected models

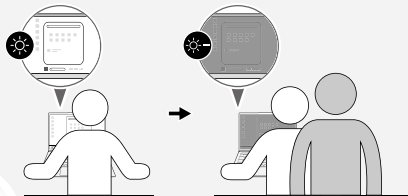
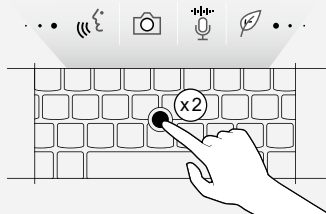
Features



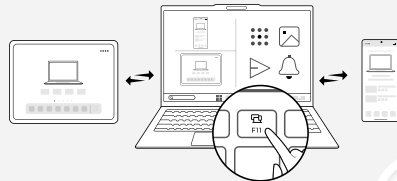
Lenovo Commercial Vantage*



TrackPoint Quick Menu



Presence Sensing*



Smart Connect



* For selected models

Specific absorption rate (SAR)

YOUR DEVICE MEETS INTERNATIONAL GUIDELINES FOR EXPOSURE TO RADIO WAVES.

Refer to the following for 10g SAR limit and maximum reported SAR values:

10g SAR limit: 2 W/kg (body-worn SAR); 4 W/kg (limb SAR)

Maximum SAR with 0 mm separation distance:

Product name	Body-worn SAR value	Limb SAR value
ThinkPad P14s Gen 7	1.304 W/kg	1.613 W/kg
ThinkPad P16s Gen 5	1.576 W/kg	1.576 W/kg

For more information about SAR, refer to the *Safety and Warranty Guide* that came with your device.

European Union (EU) / United Kingdom (UK) — radio frequency and power

This radio equipment operates with the following frequency bands and maximum radio-frequency power:

Technology	Frequency [MHz] / band	Maximum transmit power
WLAN 802.11b/g/n/ax/be Bluetooth BR/EDR/LE	2400 - 2483.5	< 20 dBm
WLAN 802.11a/n/ac/ax/be	5150 - 5350; 5470 - 5725	< 23 dBm
WLAN 802.11a/n/ac/ax/be	5725 - 5875	< 13.98 dBm
WLAN 802.11a/ax/be	5945 - 6425	< 23 dBm
WWAN UMTS	1/8	< 24.5 dBm
WWAN LTE	1/3/7/8/20/28/34/38/40/41/42/43	< 24.5 dBm
WWAN LTE HPUe	41	< 27 dBm
WWAN 5G NR	1/3/7/8/20/28/38/40/41/77/78	< 24.5 dBm
WWAN 5G NR HPUe	41/77/78	< 29 dBm
NFC	13.56	< -5.31 dBμA/m@10m

Note: Not all wireless modes / bands may be enabled depending on your product configuration. Usage of this device is limited to indoor locations in the bands 5150 - 5350 MHz and 5945 - 6425 MHz.

Connect to and disconnect from a wireless network

Connecting to a wireless network will increase energy consumption of the product.

Connect to and disconnect from a Wi-Fi network

1. Click the quick settings area on the taskbar.
2. For the Wi-Fi quick setting, click on the right arrow to list available networks.
3. Select a network available for connection and connect. Provide the necessary information if required.

Clicking the Wi-Fi box will disconnect the Wi-Fi network.

Connect to and disconnect from a cellular network (for selected models)

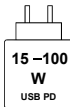
To connect to a 4G or 5G cellular data network, ensure you have a wireless wide area network (WWAN) card along with a SIM card or an installed eSIM profile.

Click the network icon, and then select the cellular network icon from the list. Provide the necessary information if required.

Clicking the cellular network icon again will disconnect the cellular network.

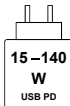
Important: Disabling the OS's sleep setting will result in higher energy consumption. It is recommended that you keep the sleep setting enabled, as it will automatically switch the product into standby mode.

Power adapter notice (for ThinkPad P14s Gen 7)



The power delivered by the adapter must be between min 15 Watts (5V, 3A) required by the radio equipment, and max 100 Watts (20V, 5A) to achieve the maximum charging speed. This product supports USB PD fast charging.

Power adapter notice (for ThinkPad P16s Gen 5)

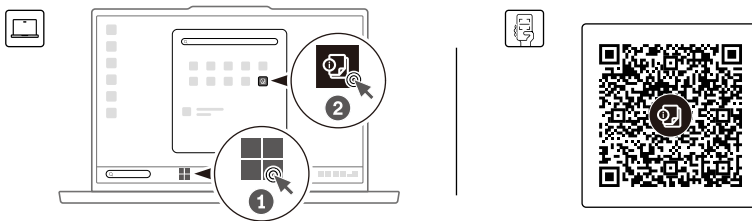


The power delivered by the adapter must be between min 15 Watts (5V, 3A) required by the radio equipment, and max 140 Watts (28V, 5A) to achieve the maximum charging speed. This product supports USB PD fast charging.

For Barcode Position Only

PN: XXXXXXXXXXX Printed in China

Access online manuals



First Edition (May 2026)
© Copyright Lenovo 2026.

LIMITED AND RESTRICTED RIGHTS NOTICE: If data or software is delivered pursuant to a General Services Administration "GSA" contract, use, reproduction, or disclosure is subject to restrictions set forth in Contract No. GS-35F-05925.

Lenovo, Lenovo logo, ThinkPad, and ThinkPad logo are trademarks of Lenovo. Intel and Thunderbolt are trademarks of Intel Corporation or its subsidiaries in the U.S. and/or other countries. The terms HDMI and HDMI High-Definition Multimedia Interface are trademarks or registered trademarks of HDMI Licensing LLC in the United States and other countries. USB-C® is a registered trademark of USB Implementers Forum. All other trademarks are the property of their respective owners.



For FSC Mix logo only