

HP ZBook 8 G2i 14 inch Mobile Workstation PC

Step up to mobile pro performance.

Accomplish more anywhere⁷. The HP ZBook 8 introduces top performers to AI workstation power in a slim, light design. Now redesigned with up to 70W Max system TDP to keep you productive on demanding tasks like 3D modelling, design reviews, and architectural layouts – wherever your work takes you.

Mobile performance. Upgraded.

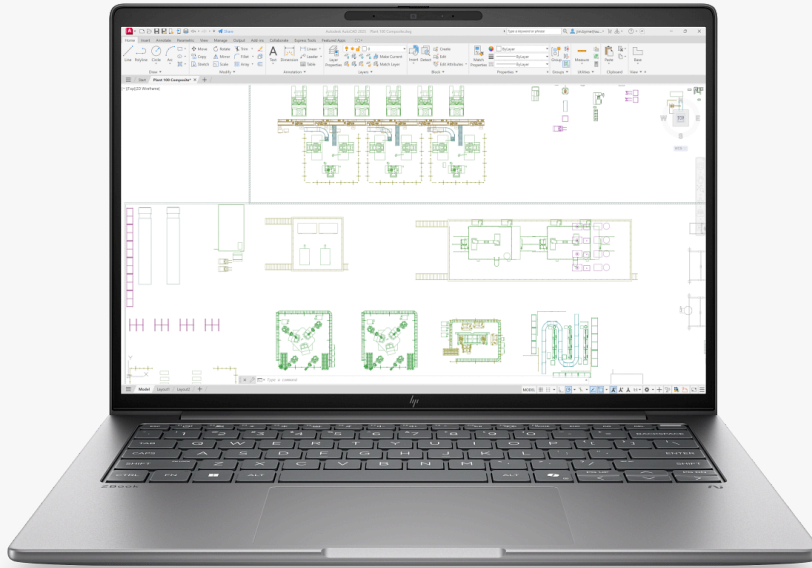
Bring your biggest idea to life faster. With a Intel® Core™ Ultra 3-series CPU with Copilot+ NPU², advanced integrated or discrete graphics, and large memory configurations³, the HP ZBook 8 delivers reliable pro app performance.

Ready to work. Anywhere.

Take your work with you in a thin and light laptop with a long lasting-battery⁴. Dual cooling fans allow you stay productive without overheating, and reliable connectivity options⁵ help you stay connected wherever you are.

Unleash Local AI Power on ZBook 8

Save time for your best work with local AI on the ZBook 8—a powerful Copilot+ PC. Offload and run AI productivity tasks locally on the NPU² while also tackling demanding AI enhanced professional workflows.



*Product image may differ from actual product

Sustainability in action

Built for a better tomorrow

HP is innovating with purpose to drive impactful, lasting change. This device is ENERGY STAR® certified, EPEAT Gold⁵ registered and has attained EPEAT Climate+. Its cover and keycaps are crafted with 50% recycled aluminum and 50% recycled plastics⁶.



HP ZBook 8 G2i 14 inch Mobile Workstation PC

Featuring

Mobile performance. Upgraded.

Bring your biggest idea to life faster. With up to an Intel® Core™ Ultra 9 CPU with a Copilot+ NPU¹ and advanced Intel® Arc™ Pro graphics, plus an optional NVIDIA RTX PRO™ 500 Blackwell GPU², HP ZBook 8 delivers seamless multitasking and pro app performance.

Ready to work. Anywhere.

Take your work with you in a thin and light laptop that lasts up to 165 min longer than last gen³. Dual cooling fans allow you to stay productive without overheating, plus reliable Wi-Fi 7 and optional 5G HP Go connectivity⁴ helps you stay connected wherever you are.

Unleash Local AI Power on ZBook 8

Save time for your best work with local AI on ZBook 8—a Copilot+ PC with up to 50 TOPS NPU¹. And with an optional NVIDIA RTX PRO™ 500 Blackwell GPU with AI TOPS², this PC powers through advanced workflows so you can focus on ideas—not obstacles.

Built for a better tomorrow

HP is innovating with purpose to drive impactful, lasting change. This device is ENERGY STAR® certified, EPEAT Gold⁵ registered and has attained EPEAT Climate+. Its cover and keycaps are crafted with 50% recycled aluminum and 50% recycled plastics⁶.

HP Recommends Windows 11 Pro for business with Microsoft Copilot

Work anywhere without compromising performance with Windows 11 and HP collaboration, security, and connectivity technology. Summarize and rewrite content, get relevant content recommendations, and stay organized with Microsoft Copilot.^{8,9}

Intel® Core™ Ultra Processor

Unleash power-efficient performance with Intel® Core™ Ultra 3-series processors. This CPU with up to Intel® Arc™ Pro graphics and dedicated Copilot+ NPU unlocks new levels of performance for the next era of AI-enhanced software.¹

NVIDIA® Graphics

Tackle your biggest projects with an optional NVIDIA RTX PRO™ 500 Blackwell GPU, certified for pro apps.¹⁰

Large Memory Configurations

Power through projects with up to 64 GB RAM for fast editing and design.¹⁰

Lightning-fast Storage

Blaze through multiple tasks with up to 2 TB local NVMe storage.¹¹

HP Smart Sense

HP Smart Sense intelligently optimizes your PC's thermal and power management based on your usage. Select full performance mode when completing demanding tasks to maximize performance.¹²

AI Noise Reduction

Collaborate with confidence with advanced features like AI Noise Reduction to suppress background noise for crisp, clear calls.

HP Sure View 6

Work confidently in public with HP Sure View 6 - screen privacy technology that's activated with one keystroke. Sure View reduces visual light to make your screen unreadable when viewed from the side to keep your information private anywhere.¹³

HP DreamColor Display

Have confidence in what you see on screen with an optional HP DreamColor Display with 100% DCI-P3 color gamut and a 120Hz refresh rate you get smooth motion for high-speed videos.^{14,15}

Network Connectivity

Stay connected from nearly anywhere with support for various network connectivity options. Choose up to Wi-Fi 7 and optional 5G with HP Go, for a fast and reliable wireless connection or RJ-45 for a smooth, wired Internet experience.^{16,5}

Poly Camera Pro

Look your best on video calls and save some power too. Manage your video controls for internal and external cameras with Poly Camera Pro. Now Auto Frame, Spotlight, Background Blur, and virtual backgrounds save power running on the NPU.¹⁷

Protected by HP Wolf Security

HP Wolf Security for Business includes built-in, hardware-enforced, always-on protection designed for business-oriented Workstations.¹⁸



HP ZBook 8 G2i 14 inch Mobile Workstation PC

Technical specifications

Available Operating Systems	Windows 11 Pro ¹ Windows 11 Home Single Language - HP recommends Windows 11 Pro for business ¹ Windows 11 Home - HP recommends Windows 11 Pro for business ¹ Windows 11 Pro (Windows 11 Enterprise available with a Volume Licensing Agreement) ¹ FreeDOS Ubuntu 24.04 LTS ²
Processor family	Intel® Core™ Ultra 9 processor Intel® Core™ Ultra 7 processor Intel® Core™ Ultra 5 processor Intel® Core™ Ultra X9 processor Intel® Core™ Ultra X7 processor
Available Processors	Intel® Core™ Ultra 5 336H (up to 4.6 GHz with Intel® Turbo Boost Technology, 18 MB L3 cache, 12 cores, 12 threads) with Intel® Graphics and Intel® AI Boost (47 NPU TOPS), supports Intel® vPro® Technology; Intel® Core™ Ultra 5 325 (up to 4.5 GHz Max Turbo frequency, 12 MB L3 cache, 8 cores, 8 threads) with Intel® Graphics and Intel® AI Boost (47 NPU TOPS); Intel® Core™ Ultra 5 335 (up to 4.6 GHz Max Turbo frequency, 12 MB L3 cache, 8 cores, 8 threads) with Intel® Graphics and Intel® AI Boost (47 NPU TOPS), supports Intel® vPro® Technology; Intel® Core™ Ultra 5 338H (up to 4.7 GHz Max Turbo frequency, 18 MB L3 cache, 12 cores, 12 threads) with Intel® Arc™ B370 Graphics and Intel® AI Boost (47 NPU TOPS); Intel® Core™ Ultra 7 365 (up to 4.8 GHz Max Turbo frequency, 18 MB L3 cache, 8 cores, 16 threads) with Intel® Graphics and Intel® AI Boost (49 NPU TOPS); Intel® Core™ Ultra X7 358H (up to 4.8 GHz Max Turbo frequency, 18 MB L3 cache, 16 cores, 16 threads) with Intel® Arc™ B390 Graphics and Intel® AI Boost (50 NPU TOPS); Intel® Core™ Ultra X7 368H (up to 5.0 GHz Max Turbo frequency, 18 MB L3 cache, 16 cores, 16 threads) with Intel® Arc™ B390 Graphics and Intel® AI Boost (50 NPU TOPS); Intel® Core™ Ultra X9 388H (up to 5.1 GHz Max Turbo frequency, 18 MB L3 cache, 16 cores, 16 threads) with Intel® Arc™ B390 Graphics and Intel® AI Boost (50 NPU TOPS); Intel® Core™ Ultra 9 386H (up to 4.9 GHz with Intel® Turbo Boost Technology, 18 MB L3 cache, 16 cores, 16 threads) with Intel® Graphics and Intel® AI Boost (50 NPU TOPS); Intel® Core™ Ultra 7 366H (up to 4.8 GHz with Intel® Turbo Boost Technology, 18 MB L3 cache, 16 cores, 16 threads) with Intel® Graphics and Intel® AI Boost (50 NPU TOPS); Intel® Core™ Ultra 7 356H (up to 4.7 GHz with Intel® Turbo Boost Technology, 18 MB L3 cache, 16 cores, 16 threads) with Intel® Graphics and Intel® AI Boost (50 NPU TOPS)
Neural Processing Unit	Intel® AI Boost
Product colour	Meteor silver
Maximum memory	64 GB DDR5-5600 MT/s non-ECC Transfer rates up to 5600 MT/s.
Memory slots	2 SODIMM
Internal storage	512 GB up to 2 TB PCIe® Gen5 NVMe™ M.2 SSD ¹¹ 256 GB up to 1 TB PCIe® Gen5 NVMe™ Performance M.2 SED SSD ¹¹ 256 GB up to 512 GB PCIe® NVMe™ M.2 SSD ¹¹ Up to 2 TB
Display size (diagonal, metric)	40.6 cm (16")
Display ^{7,24,35,37}	35.6 cm (14") diagonal, WQXGA (2560 x 1600), 120 Hz, anti-glare, 500 nits, 100% DCI-P3, HP DreamColor; 35.6 cm (14") diagonal, WUXGA (1920 x 1200), IPS, anti-glare, Low Blue Light, 800 nits, sRGB 100%, HP Sure View 6 integrated privacy screen; 35.6 cm (14") diagonal, 2.5K (2560 x 1600), IPS, anti-glare, Low Blue Light, 400 nits, AD-100; 35.6 cm (14") diagonal, WUXGA (1920 x 1200), 60 Hz, IPS, anti-glare, 300 nits, sRGB 62.5%; 35.6 cm (14") diagonal, WUXGA (1920 x 1200), 60 Hz, IPS, anti-glare, Low Blue Light, 400 nits, sRGB 100%; 35.6 cm (14") diagonal, WUXGA (1920 x 1200), touch, IPS, anti-glare, Low Blue Light, 800 nits, sRGB 100%, HP Sure View 6 integrated privacy screen; 35.6 cm (14") diagonal, WUXGA (1920 x 1200), touch, IPS, anti-glare, 400 nits, sRGB 62.5%
Available Graphics	Integrated: Intel® Graphics; Intel® Arc™ B370 GPU; Intel® Arc™ B390 GPU ^{20,21,23} Discrete: NVIDIA RTX PRO™ 500 Blackwell Generation Laptop GPU (6 GB GDDR7 dedicated) ^{21,23}
Audio	Audio by Poly Studio, 2 integrated stereo speakers (1W/8 ohm per speaker), discrete amplifiers, 2 integrated dual array digital microphones
Ports and connectors	Left side: 1 HDMI 2.1; 13.5 mm audio combo jack; 2 Thunderbolt™ 4 with USB Type-C® 40Gbps signaling rate (USB Power Delivery, DisplayPort™ 2.1) ^{12,13,14} ; Right side: 1 USB Type-A 5Gbps signaling rate; 1 RJ-45; 1 nano security lock slot; 1 USB Type-C® 10Gbps signaling rate (USB Power Delivery, DisplayPort™ 1.4)
Input devices	HP Premium Keyboard - spill-resistant, full-size, backlit keyboard with DuraKeys; HP Premium Privacy Keyboard - spill-resistant, full-size, backlit keyboard with DuraKeys; Clickpad with multi-touch gesture support; Microsoft Precision Touchpad with gesture support
Communications	LAN: Intel® I219-LM GbE LOM, vPro®; Intel® I219-LM GbE LOM, non-vPro®; WLAN: Intel® Wi-Fi 6E AX211 (2x2) and Bluetooth® 5.3 wireless card; Intel® Wi-Fi 7 BE211 (2x2) and Bluetooth® 6 wireless card, vPro®; Intel® Wi-Fi 7 BE211 (2x2) and Bluetooth® 6 wireless card, non-vPro® ^{16,17} ; WWAN: HP R15 5G Solution; HP R15 5G Go Solution ^{15,18} ; LPWAN: HP RW220-GL LTE (Low Power) (CAT-1bis) ¹⁹ ; NFC Mirage WNC XRAV1
Camera	5 MP camera; 5 MP IR camera
Software	Buy Microsoft Office (sold separately); Copilot in Windows with Copilot key ^{54,61} ; HP Connection Optimizer ⁵⁹ ; HP Hotkey support; HP MAC Address Manager; HP Notifications; HP UEFI BIOS Certification Level 2.9; HP PC Hardware Diagnostics Windows; HP Privacy Settings; HP Services Scan ⁴⁰ ; HP Smart Support ⁵⁵ ; HP Support Assistant ⁵⁷ ; HP App ³⁸ ; HSA Fusion for Commercial; HSA Telemetry for Commercial; Poly Camera Pro; Poly Lens ⁵⁸ ; Edge Customization; Data Science Stack; Ubuntu Data Science Stack; HP IQ ⁶²
Security management	HP Wolf Security for Business includes: HP Sure Start, HP Secure Erase ^{32,22} , HP Sure Click ³⁴ , HP Sure Recover ³⁰ , HP Sure Run ³¹ , HP Sure Sense ⁴² , HP Sure Admin ²⁹ , Secured-Core PC Enable ³³ ; Windows Hello Enhanced Sign-in Security (ESS) Enable ²⁵ ; Absolute Persistence Module ⁶⁰ ; HP BIOS Recovery; BIOS Update via Network; HP BIOSphere ⁴⁴ ; HP DriveLock and Automatic DriveLock; HP Wake on WLAN; Audio Permanent Disable; TPM 2.0 Embedded Security Chip (Common Criteria EAL4+ Certified) (FIPS 140-2 Level 2 Certified)
Security Software Licenses	HP Wolf Pro Security Edition ⁵⁶
Fingerprint reader	Fingerprint reader in power button (select models)



HP ZBook 8 G2i 14 inch Mobile Workstation PC

Technical specifications

Management features	HP Client Catalog (download) ⁹ ; HP Client Management Script Library (download) ¹⁰ ; HP Cloud Recovery ²⁶ ; HP Patch Assistant (download); HP Image Assistant (download) ³⁸ ; HP Manageability Integration Kit (download) ²⁷ ; HP Power Manager with Battery Health Manager (download) ⁵³ ; HP Driver Packs (download); HP Connect for Microsoft Endpoint Manager
Memory card device	1 smart card reader (select models); Nano SIM card slot (optional)
Power	HP 140 W Slim External AC USB Type-C® power adapter; HP 100 W wall mount USB Type-C® GaN power adapter; HP 65 W USB Type-C® GaN power adapter
Battery type	HP Long Life 3 cell, 68 Wh Polymer; HP Long Life 8 cell, 77 Wh Polymer ⁴¹ ;
Dimensions	31.56 x 22.2 x 1.9 cm; (Dimensions vary by configuration)
Weight	Starting at 1.43 kg; (Weight varies by configuration and components.)
Ecolabels	EPEAT® Gold with Climate+ ⁴⁹
Energy star certified	ENERGY STAR® certified
Sustainable impact specifications	Molded paper pulp cushion inside box is made of 100% recycled or certified sources; Outside box and corrugated cushions are 100% from certified or recycled sources and recyclable; At least 40% post-consumer recycled plastic; Low halogen; Bulk packaging available; External power supply 90% efficiency ^{45,46,47,48,50}



HP ZBook 8 G2i 14 inch Mobile Workstation PC

Accessories and services (not included)

HP 715 Rechargeable Multi-Device Mouse



Find the freedom to work how you want with programmable buttons, up to 90-day battery life¹, and a compact ambidextrous design. Stay productive from anywhere, on any surface, and with many devices with track on glass sensor and multi-OS connectivity. Work better with the freedom you want and the flexibility you need, all in one mouse.

Product number: 6E6FOAA

¹ Actual battery life will vary with use and environmental conditions, and will naturally decrease with time and usage.

² Based on HP's internal analysis of mice that recharge using Micro USB or USB-C[®] with 6 or more programmable buttons using manufacturer software or app as of January 2023.

HP 105 Sanitizable Mouse Pad



Elevate your space with an anti-slip, durable, sanitizable¹, and spill-resistant mouse pad. With effortless gliding and pinpoint accuracy, this minimalist mouse pad maximizes movement to make the perfect accomplice to your favorite mouse.

Product number: 8X595AA

¹ Select household wipes can be safely used up to 1,000 wipes. See wipe manufacturer's instructions for disinfecting and the HP cleaning guide for HP tested wipe solutions at How to Clean Your HP Device Whitepaper (<https://h20195.www2.hp.com/v2/GetDocument.aspx?docname=4AA7-7610ENW>)

² Recycled plastic content percentage is based on the definition set in the IEEE 1680.1-2018 EPEAT[®] standard.

HP Travel Plus 15L 14-inch Laptop Bag



Simplify your journey with one bag that meets all your travel needs. This durable, thoughtfully designed bag keeps you organized—from packing through the airport and beyond. Multiple compartments enable easy access for airport security convenience.

Product number: A2CE2AA

¹ Fits most laptops up to 14 inches.

² Supplier tested for water resistance on exterior fabric coating.

HP Multi-Device Dual-Mode Keyboard with Palm Rest 585K



Stay focused with a keyboard that prioritizes comfort with a magnetic palm rest and quiet keys. Unlock new levels of productivity with programmable shortcuts,¹ uninterrupted connectivity across devices and operating systems, and encrypted security.

Product number: BD5F7AA

¹ Requires HP Accessory Center (HPAC) Software. HPAC available for free download in Microsoft Store.

² Copilot key feature availability varies by market, see aka.ms/keysupport. Copilot is NOT available in China, Russia, Belarus, and embargoed regions Cuba, Iran, North Korea, Crimea.

HP Portable USB-C 4K HDMI Hub



Find more ways to connect, wherever you work, with this compact and reliable USB-C[®] 4K HDMI hub. Get five additional ports that support multiple devices and operating systems, and deliver power, so you can stay productive throughout the day.

Product number: BR1UOUT

¹ Power adapter not included. 90W or higher power adapter provides a maximum of 65W to the computer. 65W power adapter provides a maximum of 45W to the computer.

² Actual throughput may vary.

HP ZBook 8 G2i 14 inch Mobile Workstation PC

Footnotes

Messaging Footnotes

- ⁸ Not all features are available in all editions or versions of Windows. Systems may require upgraded and/or separately purchased hardware, drivers, software, or BIOS update to take full advantage of Windows functionality. Windows 11 is automatically updated, which is always enabled. High speed Internet and Microsoft account required. ISP fees may apply, and additional requirements may apply over time for updates. See <http://www.windows.com>.
- ⁹ Microsoft Copilot requires Windows 11. Some features require an NPU. Timing and availability will be dependent on Microsoft and varies by market and device. Requires Microsoft account to log in. Where Copilot is not available, the Copilot key will lead to the Bing search engine. See <http://aka.ms/WindowsAIFeatures>.
- ¹⁰ Optional feature that must be configured at purchase.
- ¹¹ For hard drives, GB = 1 billion bytes. TB = 1 trillion bytes. Actual formatted capacity is less. Up to 30GB (for Windows 10) of system disk is reserved for system recovery software.
- ¹² Multicore is designed to improve performance of certain software products. Not all customers or software applications will necessarily benefit from use of this technology. Performance and clock frequency will vary depending on application workload and your hardware and software configurations. Intel's numbering, branding, and/or naming is not a measurement of higher performance. Optional feature that must be configured at purchase. Features and software that require a NPU may require software purchase, subscription or enablement by a software or platform provider, and third-party software may have specific configuration or compatibility requirements. Performance varies by use, configuration, and other factors.
- ¹³ Optional feature that must be configured at purchase. Visit <https://www.nvidia.com/en-us/products/workstations/professional-laptops/compare/> to view GPU specifications and performance.
- ¹⁴ Based on preliminary engineering estimates and the comparison between ZBook 8 G1i with a 62Whr and ZBook 8 G2i with a 68Whr. Battery life will vary depending on the product model, configuration, loaded applications, features, use, wireless functionality, and power management settings. The maximum capacity of the battery will naturally decrease with time and usage. See MobileMark30 battery benchmark.
- ¹⁵ Wireless access point and Internet service required and sold separately. Availability of public wireless access points limited. Wi-Fi 7 (802.11BE) functionality requires compatible Windows 11 OS, compatible processor, and separately purchased Wi-Fi 7 router to support backwards compatibility with prior 802.11 specs. Available in countries where Wi-Fi 7 is supported. The specification for 802.11BE is a draft specification and is not final. If the final specification differs from the draft specification, it may affect the ability of the device to communicate with other 802.11BE devices. Wi-Fi[®] supporting gigabit data rate is achievable with Wi-Fi 7 (802.11BE) when transferring files between two devices connected to the same router. Requires a wireless router, sold separately, that supports 160MHz channels. Available on select configurations.
- ¹⁶ Applies to HP PCs, Workstations and Displays manufactured after January 2019. Based on most Gold and Silver EPEAT[™] registrations by meeting all required criteria and achieving 50-74% of the optional points for EPEAT[™] Silver and 75-100% of the optional points for EPEAT[™] Gold according to IEEE 16801:2018 EPEAT[™]. EPEAT tier levels may vary by country. See www.epeat.net for registration status and tier levels by country.
- ¹⁷ Recycled plastic is expressed as a percentage of the total weight plastic. Post-consumer recycled is based on the definition set in the EPEAT standard for computers, IEEE 16801:2018 standard.
- ¹⁸ Compared to HP ZBook G1a.
- ¹⁹ HP Smart Sense requires Windows 10 or higher.
- ²⁰ Optional feature.
- ²¹ Color accurate HP DreamColor display is an optional feature that must be configured at purchase.
- ²² All specifications represent the typical specifications provided by HP's component manufacturers; actual performance may vary either higher or lower.
- ²³ Intel[®] 5G module is optional and must be configured at the factory. Module designed for 5G NR NSA (non-standalone) networks as carriers deploy Evolved-Universal Terrestrial Radio Access New Radio Dual Connectivity (ENDC) with both 100MHz of 5G NR and LTE channel bandwidth, using 256QAM 4x4 as defined by 3GPP. Module requires activation and separately purchased service contract. Check with service provider for coverage and availability in your area. Data connection, upload and download speeds will vary due to network, location, environment, network conditions, and other factors. Backwards compatible to 4G LTE and 3G HSPA technologies. 5G module planned to be available in select platforms and select countries, where carrier supported.
- ²⁴ Requires Windows OS.
- ²⁵ HP Wolf Security for Business requires Windows 10 or 11 Pro and higher, includes various HP security features and is available on HP Pro, Elite, Workstation, and RPOS products. See product details for included security features.

Specification Footnotes

- ¹ Not all features are available in all editions or versions of Windows. Systems may require upgraded and/or separately purchased hardware, drivers, software or BIOS update to take full advantage of Windows functionality. Windows 11 is automatically updated, which is always enabled. ISP fees may apply and additional requirements may apply over time for updates. See <http://www.windows.com>.
- ² Processor speed denotes maximum performance mode; processors will run at lower speeds in battery optimization mode.
- ³ Intel[®] Turbo Boost performance varies depending on hardware, software and overall system configuration. See www.intel.com/technology/turboboost for more information.
- ⁴ Features and software that require a NPU may require software purchase, subscription or enablement by a software or platform provider, and third party software may have specific configuration or compatibility requirements. Potential NPU inferring performance varies by use, configuration, and other factors.
- ⁵ Availability may vary by country.
- ⁶ Due to the non-industry standard nature of some third-party memory modules, we recommend HP branded memory to ensure compatibility. If you mix memory speeds, the system will perform at the lower memory speed.
- ⁷ HP Client Catalog not preinstalled, however available for download at <https://www.hp.com/us-en/solutions/client-management-solutions.html>.
- ⁸ HP Client Management Script Library <https://www.hp.com/us-en/solutions/client-management-solutions.html#tab=manageability-tools>.
- ⁹ For storage drives, GB = 1 billion bytes. TB = 1 trillion bytes. Actual formatted capacity is less. Up to 32 GB is reserved for system recovery software.
- ¹⁰ Maximum speed requires DisplayPort[™] and PCIe aggregation.
- ¹¹ HDMI cable sold separately.
- ¹² SuperSpeed USB 20Gbps is not available with Thunderbolt[™] 4.
- ¹³ HP 5G module is optional and must be configured at the factory. Module designed for 5G NR NSA (non-standalone) networks as carriers deploy Evolved-Universal Terrestrial Radio Access New Radio Dual Connectivity (ENDC) with both 100MHz of 5G NR and LTE channel bandwidth, using 256QAM 4x4 as defined by 3GPP. Module requires activation and separately purchased service contract. Check with service provider for coverage and availability in your area. Data connection, upload and download speeds will vary due to network, location, environment, network conditions, and other factors. Backwards compatible to 4G LTE and 3G HSPA technologies. 5G module planned to be available in select platforms and select countries, where carrier supported.
- ¹⁴ Wireless access point and Internet service required and sold separately. Availability of public wireless access points limited. Wi-Fi 7 (802.11BE) functionality requires compatible Windows OS, select processor, and a Wi-Fi 7 router, sold separately. Wi-Fi 7 is backwards compatible with prior 802.11 specs. Available in countries where Wi-Fi 7 is supported. The specification for 802.11BE is a draft specification and is not final. If the final specification differs from the draft specification, it may affect the ability of the device to communicate with other 802.11BE devices.
- ¹⁵ Wi-Fi 6E requires a Wi-Fi 6E router, sold separately, to function in the 6GHz band. Availability of public wireless access points limited. Wi-Fi 6E is backwards compatible with prior 802.11 specs. And available in countries where Wi-Fi 6E is supported. Wi-Fi 6E is designed to support gigabit data rate when transferring files between two devices connected to the same router. Requires a wireless router, sold separately, that supports 80MHz and higher channels.
- ¹⁶ WWAN is an optional feature and requires factory configuration and separately purchased service contract. Check with service provider for coverage and availability in your area. Connection speeds will vary due to location, environment, network conditions, and other factors. 4G LTE not available on all products, and in all regions.
- ¹⁷ LPWAN (also called Mobile Narrowband) supports HP Protect & Trace with Wolf Connect service through the subscription term, but does not support mobile broadband use.
- ¹⁸ AMD Radeon[™] Graphics on this product comes standard with the AMD Pro Graphics driver.
- ¹⁹ Support HD decode, DX12, HDMI 14, HDCP 2.2 via DP up to 4K @ 60Hz and via HDMI up to 4K @ 30Hz.
- ²⁰ HP Secure Erase implements the methods outlined in the National Institute of Standards and Technology Special Publication 800-88[™] "Clear[™]" sanitation method. HP Secure Erase does not support platforms with Intel[®] Optane[™].
- ²¹ Shared video memory (UMA) uses part of the total system memory for video performance. System memory dedicated to video performance is not available for other use by other programs.
- ²² HD content required to view HD images.
- ²³ Windows Hello face authentication utilizes a camera specially configured for near infrared (IR) imaging to authenticate and unlock Windows devices as well as unlock your Microsoft Passport.
- ²⁴ HP Cloud Recovery is available for Z by HP, HP Elite and Pro desktops and laptops PCs with Intel[®] or AMD processors and requires an open, network connection. Note: You must back up important files, data, photos, videos, etc. before use to avoid loss of data. Detail please refer to: <https://support.hp.com/us-en/document/c01156630>
- ²⁵ HP Manageability Integration Kit not preinstalled, however available for download from <https://www.hp.com/us-en/solutions/client-management-solutions.html#tab=manageability-tools>.
- ²⁶ HP Connect for Microsoft Endpoint Manager is available from the Azure Market Place for HP Pro, Elite, Z and Point-of-Sale PCs managed with Microsoft Endpoint Manager. Subscription to Microsoft Endpoint Manager required and sold separately. Network connection required.
- ²⁷ HP Sure Admin requires HP G8 or newer platforms, Windows 10 or higher, HP BIOS, HP Manageability Kit or KMS Service from <http://www.hp.com/go/clientmanagement> and HP Sure Admin Local Access Authenticator smartphone app from the Android or Apple store.
- ²⁸ HP Sure Recover is available on select HP PCs and requires Windows 10 or 11 and an open network connection. You must back up important files, data, photos, videos, etc. before using HP Sure Recover to avoid loss of data. HP Sure Recover Gen6 with Embedded Reimaging is an optional feature on select HP PCs which requires Windows 10 or 11 must be configured at purchase. You must back up important files, data, photos, videos, etc. before use to avoid loss of data.
- ²⁹ HP Sure Run is available on select HP PCs and requires Windows 10 and higher.
- ³⁰ HP Sure Start is available on select HP PCs and requires Windows 10 and higher.
- ³¹ Secured-core PC Enable requires an Intel[®] vPro[™], AMD Ryzen[™] Pro processor or Qualcomm[™] processor with SDB50 or higher and requires 8 GB or more system memory. Secured-core PC is enabled from the factory.
- ³² HP Sure Click requires Windows 10 Pro or higher or Enterprise. See https://bit.ly/2PrLT6A_SureClick for complete details.
- ³³ HP Sure View integrated privacy screen is an optional feature that must be configured at purchase and is designed to function in landscape orientation.
- ³⁴ HP App requires Windows OS.
- ³⁵ Resolutions are dependent upon monitor capability, and resolution and color depth settings.
- ³⁶ HP Driver Packs not preinstalled, however available for download at <http://www.hp.com/go/clientmanagement>.
- ³⁷ HP Tamper Lock is an optional feature that must be configured at the factory and requires a supervisor password be established prior to use.
- ³⁸ HP Services Scan is provided with Windows Update on select products and will check entitlement on each hardware device to determine if an HP TechPulse-enabled service has been purchased, and will download applicable software automatically. HP TechPulse is a telemetry and analytics platform that provides critical data around devices and applications. For full system requirements or to disable this feature, please visit <http://www.hpdaas.com/requirements>. Not applicable in China.
- ³⁹ For new batteries, actual battery Watt-hours (Wh) may differ from the design capacity and may have a full charge capacity that differs by up to 10, which is typical for lithium-ion batteries. Battery capacity naturally decreases over time and with use, depending on several factors such as battery health management settings, shelf life, temperature, environment, loaded apps, features, system configuration, and power settings.
- ⁴⁰ HP Sure Sense requires Windows 10 and higher. See product specifications for availability. On units with WWAN shipping to China, HP Sure Sense is only available via Softpaq download.
- ⁴¹ Recharges up to 50% within 30 minutes when the system is off or in standby mode when used with the power adapter provided with the notebook. Power adapter minimum of 65 watts required for battery capacities 56Whr or less. Power adapter minimum of 100 watts required for battery capacities greater than 56Whr and less than 83Whr. Power adapter minimum of 120 watts required for battery capacities greater than 83Whr and less than 100Whr. After charging has reached 90% capacity, charging speed will return to normal. Charging time may vary +/-10% due to System tolerance.
- ⁴² HP BIOSphere features may vary depending on the platform and configuration.
- ⁴³ Recycled metal is expressed as a percentage of the total weight of the metal according to ISO 14021 definitions for metal parts over 25 grams.
- ⁴⁴ Recycled plastic is expressed as a percentage of the total weight plastic. Recycled content is based on the definition set in the EPEAT criteria.
- ⁴⁵ Fiber used in paper-based packaging is sourced from certified or recycled sources per HP's Paper Sourcing Policy; certifications such as FSC[®] apply at the supplier level. Packaging parts contain certified or recycled fibers and are typically recycled in your local paper/carton recycling bin, consult your local guidelines.
- ⁴⁶ Ocean Bound plastic is based on the definition set by the UL2809 standard.
- ⁴⁷ EPEAT status and tier level varies by country. Visit <http://www.epeat.net> for more information.
- ⁴⁸ External power supplies, WWAN modules, power cords, cables and peripherals excluded. Service parts obtained after purchase may not be Low Halogen.
- ⁴⁹ Multicore is designed to improve performance of certain software products. Not all customers or software applications will necessarily benefit from use of this technology. Performance and clock frequency will vary depending on application workload and your hardware and software configurations. AMD's numbering is not a measurement of clock speed.
- ⁵⁰ HP Image Assistant not preinstalled, however available for download at <https://ftp.ext.hp.com/pub/cops-softpaq/cmit/HPiA.html>.
- ⁵¹ HP Power Manager with Battery Health can be downloaded by entering your system information here: https://support.hp.com/in-en/document/ish_4449597-351950716.
- ⁵² Copilot in Windows requires Windows 11. Some features require an NPU. Timing of feature delivery and availability varies by market and device. Requires Microsoft account to log in. Where Microsoft in Windows is not available, the Copilot key will lead to the Bing search engine. See aka.ms/copilotpluscs.
- ⁵³ HP Smart Support requires the HP Insights agent to be installed. For more information about how to enable or to download HP Smart Support, please visit <http://www.hp.com/insight-support>.
- ⁵⁴ HP Wolf Security for Business requires Windows 10 or 11 Pro or higher, includes various HP security features and is available on HP Pro, Elite, RPOS and Workstation products. See product details for included security features.
- ⁵⁵ HP Support Assistant is available on Windows. For more information, please visit www.support.hp.com/help/hp-support-assistant.
- ⁵⁶ Poly Lens Desktop requires a Windows OS.
- ⁵⁷ HP Connection Optimizer requires Windows 10 and Windows 11.
- ⁵⁸ Absolute Persistence firmware module is shipped turned off and can only be activated with the purchase a license subscription and full activation of the software agent. License subscriptions can be purchased for terms ranging multiple years. Service is limited, check with Absolute for availability outside the U.S. Certain conditions apply. For full details visit: <https://www.absolute.com/about/legal/agreements/absolute/>.
- ⁵⁹ May require Windows Update or app download from the Microsoft Store. Microsoft Copilot is NOT available in China, Russia, Belarus, and embargoed regions Cuba, Iran, North Korea, Crimea.
- ⁶⁰ HP IQ delivery app is preloaded on select HP PCs; it will be automatically updated to the future featured HP IQ application if you have auto updates enabled in Windows or will be available for download from the Microsoft Store. The future featured HP IQ app uses artificial intelligence. Features vary by configuration. For complete details see https://support.hp.com/us-en/document/ish_13696672136967116.

© Copyright 2026 HP Development Company, L.P. The information contained herein is subject to change without notice. The only warranties for HP products and services are set forth in the express warranty statements accompanying such products and services. Nothing herein should be construed as constituting an additional warranty. HP shall not be liable for technical or editorial errors or omissions contained herein. Intel, Core, Optane, Celeron, Pentium, Iris, XMM, and Thunderbolt are trademarks or registered trademarks of Intel Corporation or its subsidiaries in the United States and other countries. AMD, Ryzen, Athlon, and Radeon are trademarks of Advanced Micro Devices, Inc. Bluetooth is a trademark owned by its proprietor and used by HP Inc. under license. NVIDIA and GeForce are trademarks and/or registered trademarks of NVIDIA Corporation in the U.S. and other countries. USB Type-C[®] and USB-C[®] are registered trademarks of USB Implementers Forum. DisplayPort[™] and the DisplayPort[™] logo are trademarks owned by the Video Electronics Standards Association (VESA[®]) in the United States and other countries. McAfee and McAfee LiveSafe are trademarks or registered trademarks of McAfee LLC in the United States and other countries. ENERGY STAR is a registered trademark of the U.S. Environmental Protection Agency. All other trademarks are the property of their respective owners.

May 2026

--

