

Clip Counter Twin

Assembly Instructions

Tools Required:

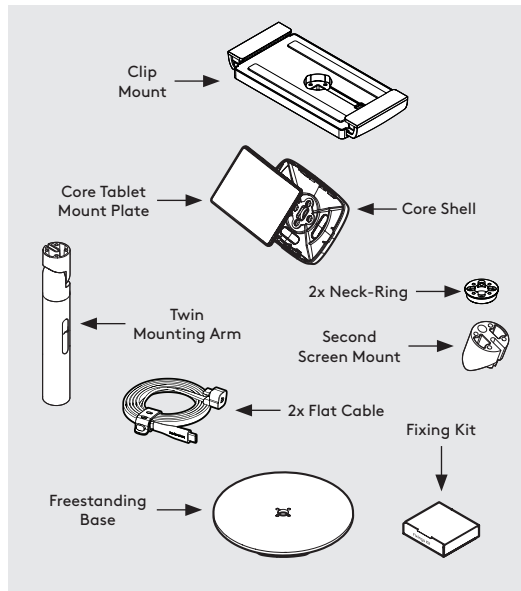
- Socket Driver

Tighten screw(s) using hand tools, using electric tools may damage your Bouncepad.

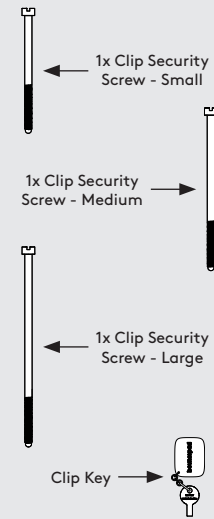
Sheet Code: BP-IM-152_REV0

Release Date: 20/02/2026

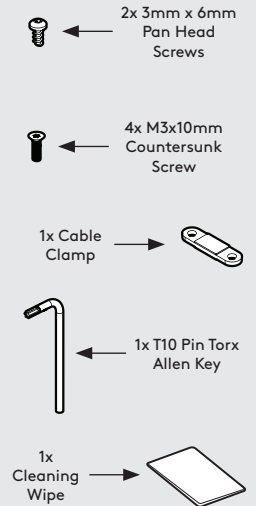
Copyright 2026 SpotSpot Ltd. (T/A Bouncepad) all rights reserved. Confidential, no part of this publication may be reproduced or transmitted in any form without the written permission of the copyright holder.



'Clip Security Kit' includes:



'Core Mount Box' includes:



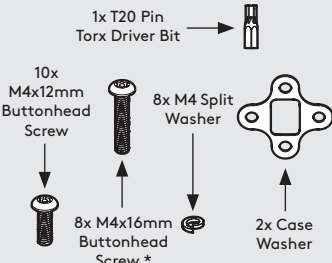
In the Box



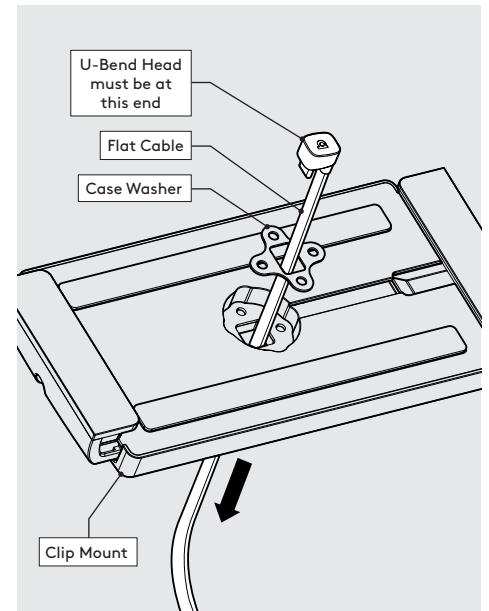
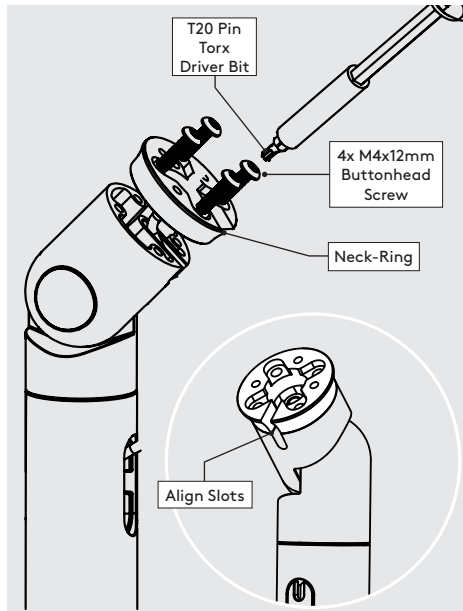
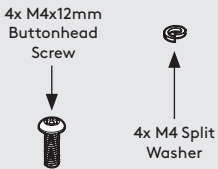
Fixings List

Due to the modular nature of our product range you may receive additional fixings in the fixings kit.

'Mounting Arm Box' includes:



'Freestanding Base Box' includes:



Fixings List

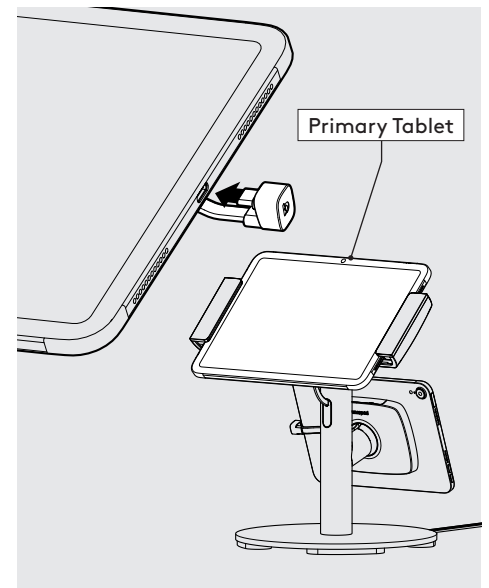
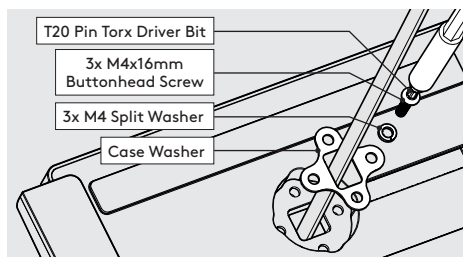
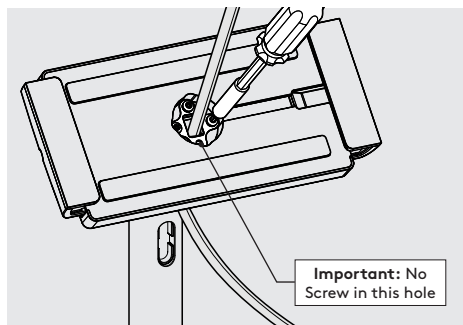
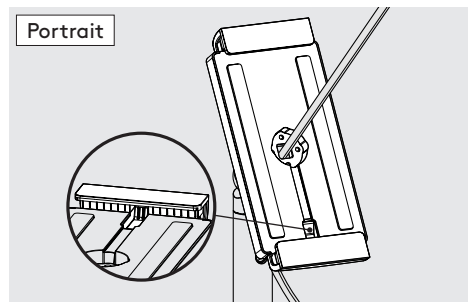
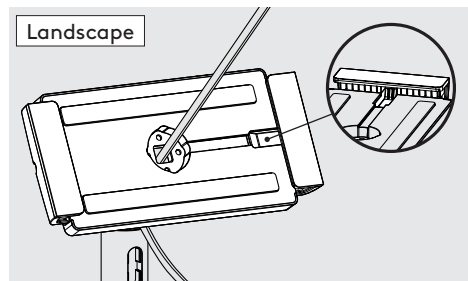
Due to the modular nature of our product range you may receive additional fixings in the fixings kit. * Previous models may have been supplied with 20mm.

1

Attach Neck-Ring to the Twin with 4x M4x12 Buttonhead Screws as shown. The slots must be aligned.

2

Feed the Flat Cable through the Case Washer & Clip Mount as shown.



3

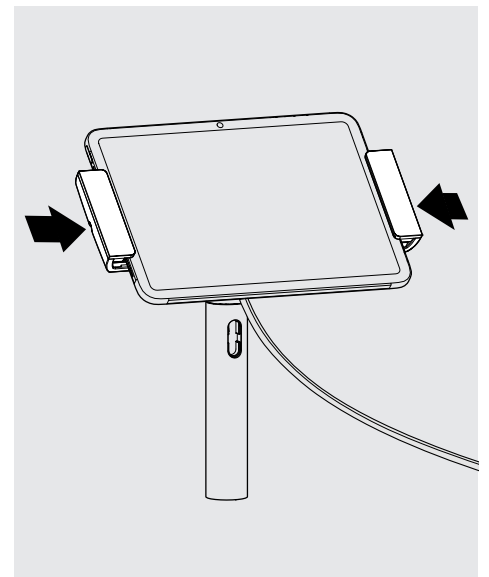
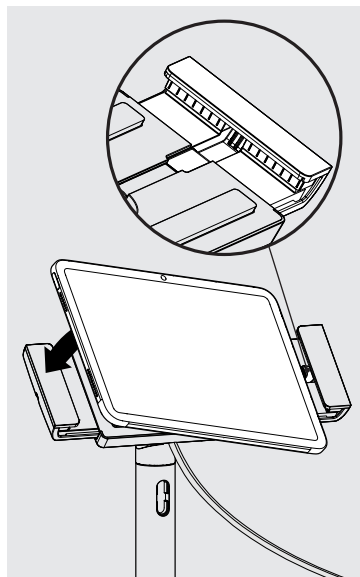
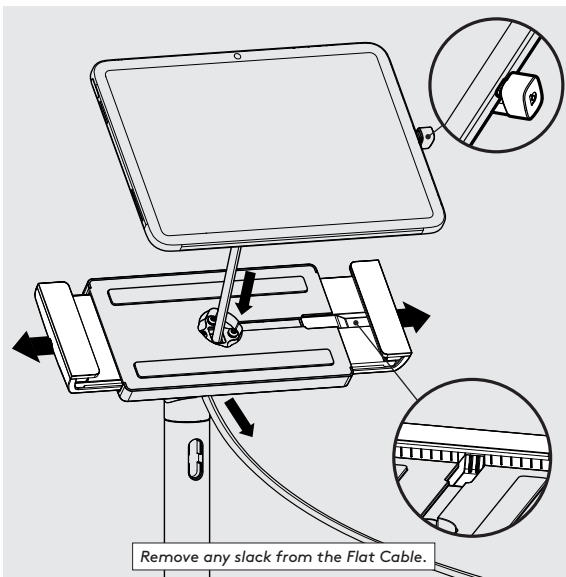
Locate the Clip Mount onto the Twin in your chosen orientation.

4

Attach the Clip Mount to the Neck-Ring as shown.

5

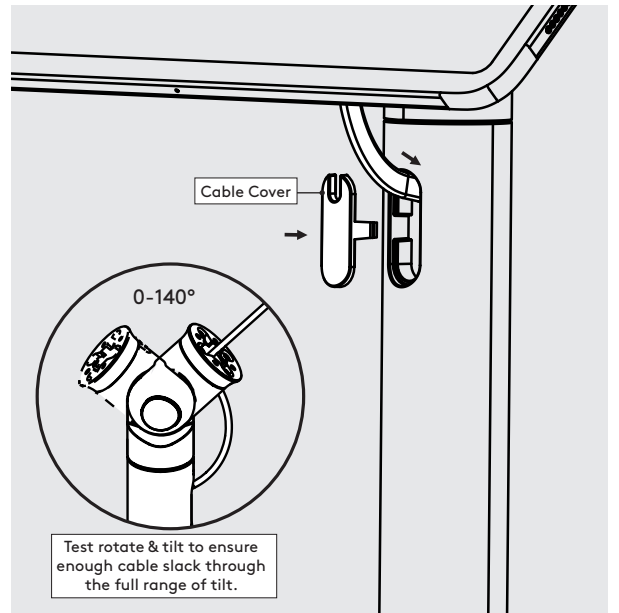
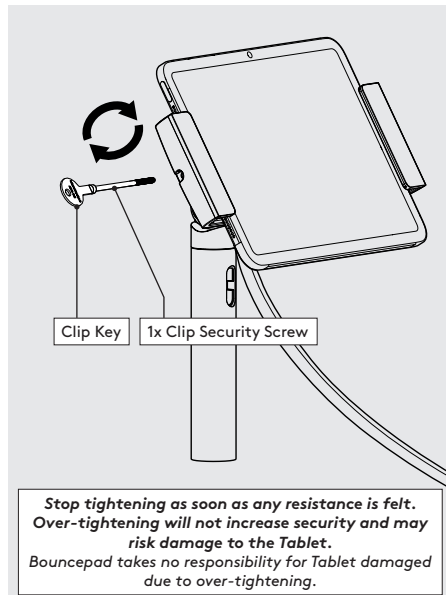
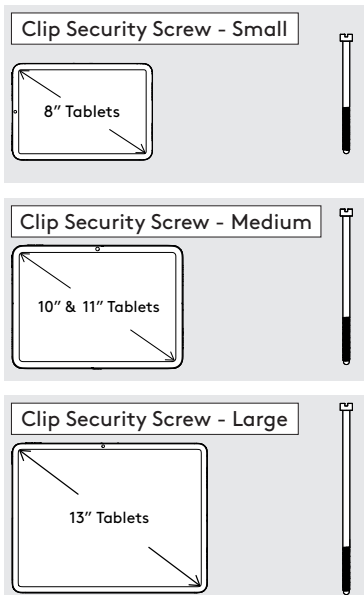
Attach the Flat Cable to the Primary Tablet with the U-Bend Head.



6 Open the Clip Mount Jaws & Lower the **Primary Tablet**.

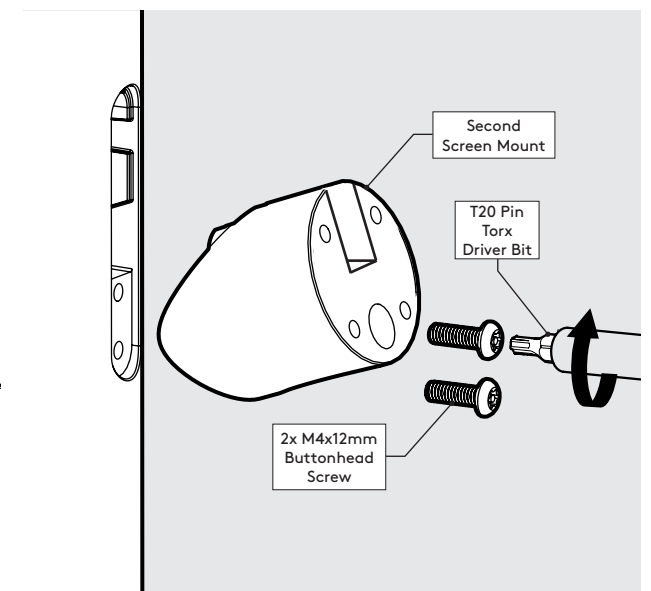
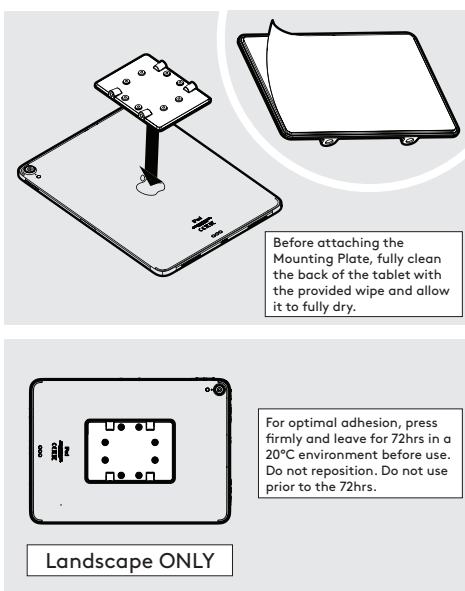
7 Locate the Flat Cable's U-Bend Head into the slot & place the **Primary Tablet** into the Clip Mount.

8 Close the Clip Mount Jaws around the **Primary Tablet**.



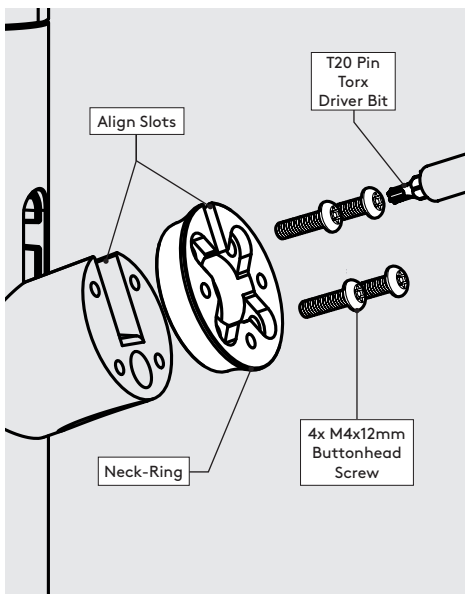
9 Secure the Clip Mount Jaws with the correct Clip Security Screw. This must only be done using the Clip Key.

10 Feed Flat Cable into the Cable Slot. Ensure there is adequate slack before attaching Cable Cover.

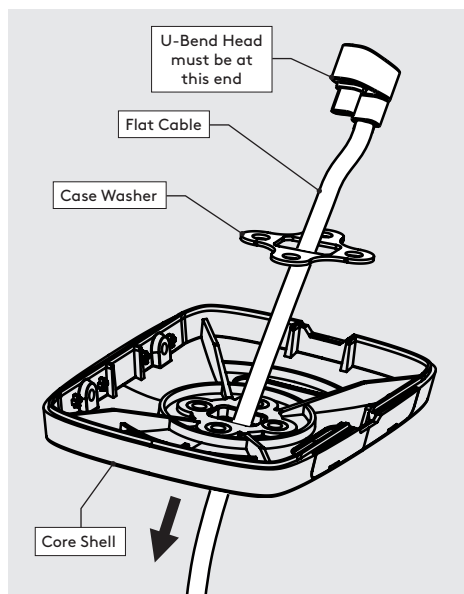


11 Remove the Mounting Plate Adhesive Backing. Attach level & centrally to the **Customer Facing Tablet** back as shown.

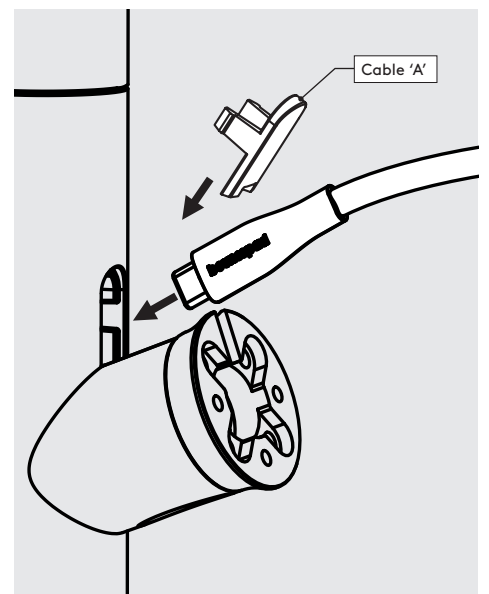
12 Secure the Second Screen Mount with 2x M4x12 Buttonhead Screws with the T20 Torx bit.



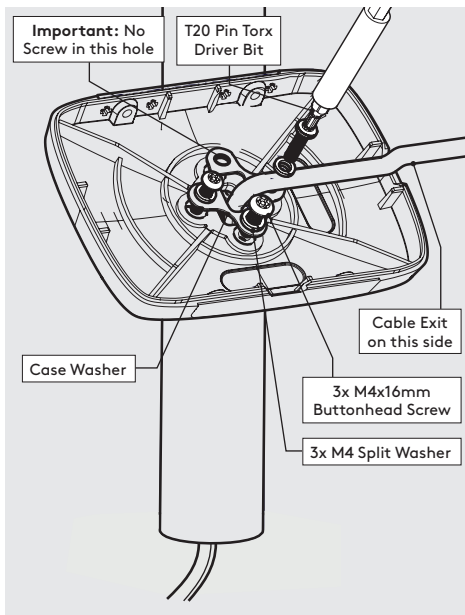
13 Attach Neck-Ring to the Second Screen Mount as shown. The slots must be aligned.



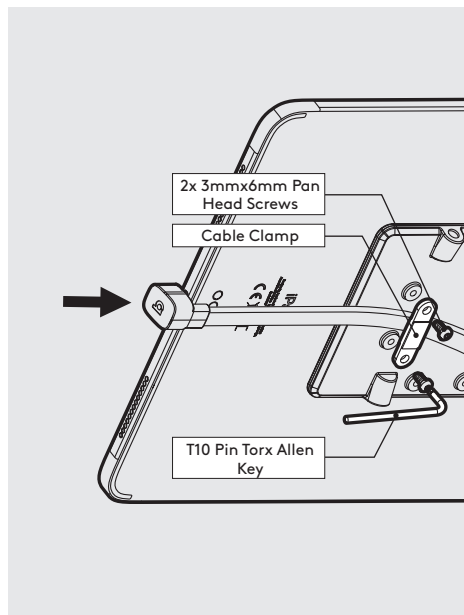
14 Feed the Flat Cable through the Case Washer & Core Shell as shown.



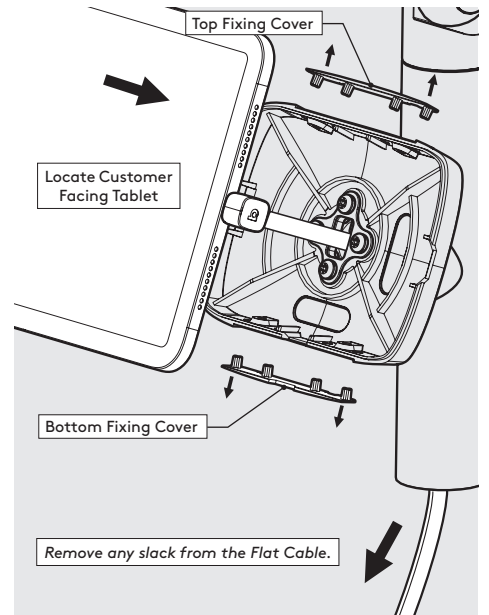
15 Feed the Flat Cable into the slot then insert Cover 'A' by snapping into place.



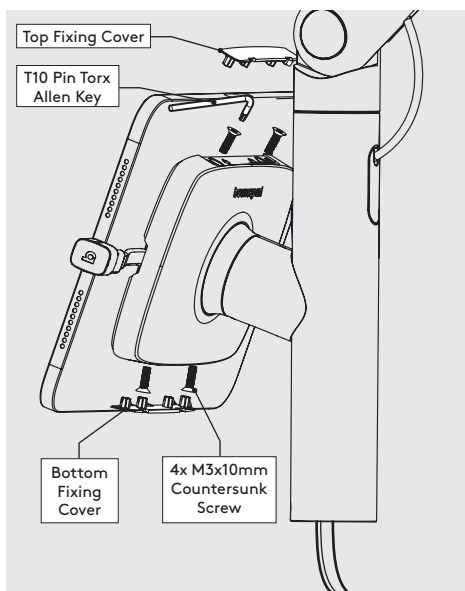
16 Attach the Core Shell to Neck-Ring with 3x M4x16mm Buttonhead Screws as shown.



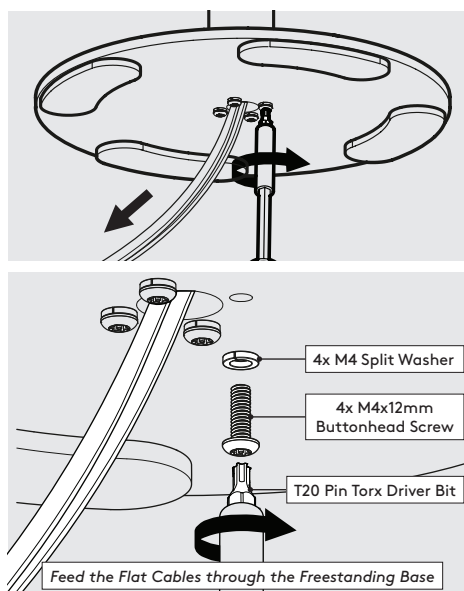
17 Plug in & then secure the Flat Cable to the Mounting Plate with the Cable Clamp as shown.



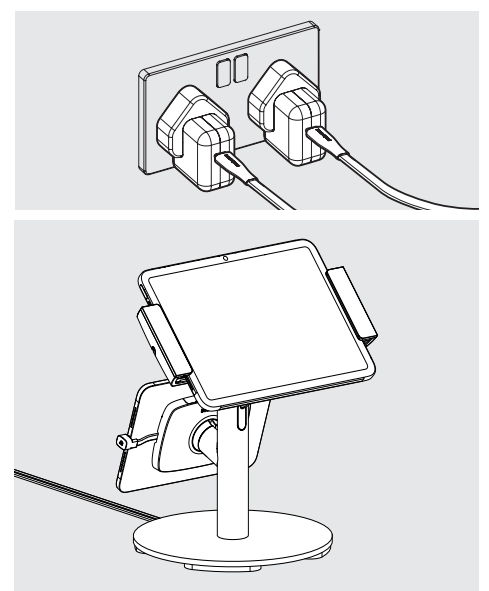
18 Remove the Fixing Covers. Feed the Flat Cable into the assembly & locate the **Customer Facing Tablet**.



19 Secure **Customer Facing Tablet** to the Core Shell as shown. Re-attach the Fixing Covers.



20 Locate & secure the Freestanding Base to the Twin.



21 Connect both Flat Cables to a main power source & Installation is now complete.