

## Clip Twin

### Assembly Instructions

#### Tools Required:

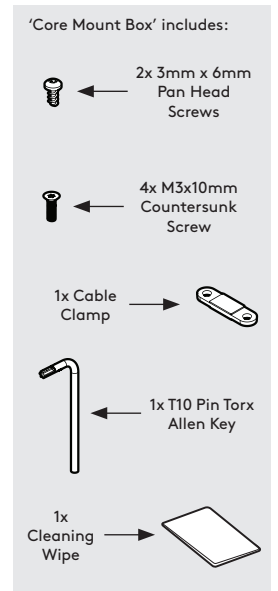
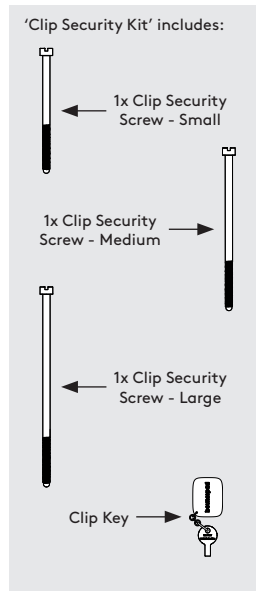
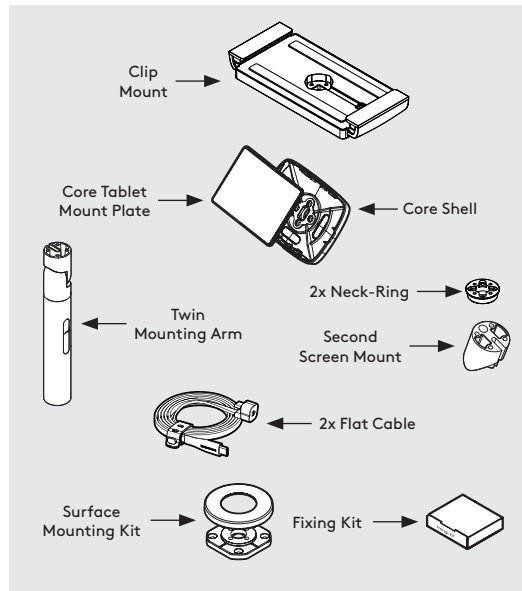
- Pencil
- Electric Drill
- 7mm Spanner *\*or adjustable spanner*
- 5.0mm Drillbit *\*if fixing from below*
- 2.5mm Drillbit *\*if fixing from above*
- 16mm Holesaw *\*if routing the tablet cable through your mounting surface*
- Socket Driver

Tighten screw(s) using hand tools, using electric tools may damage your Bouncepad.

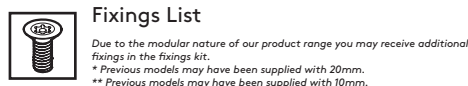
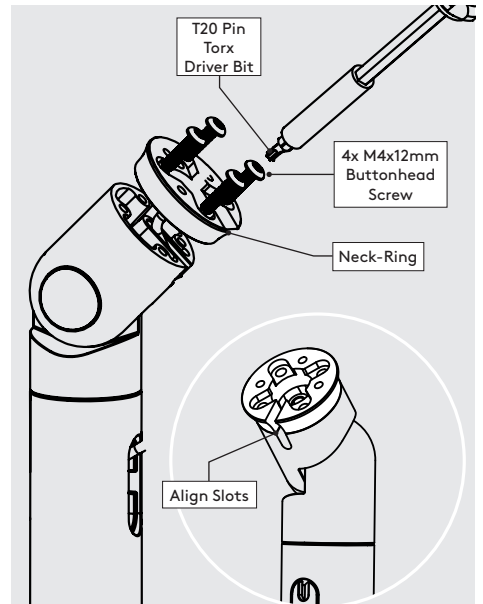
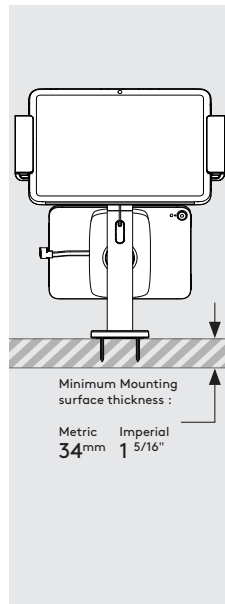
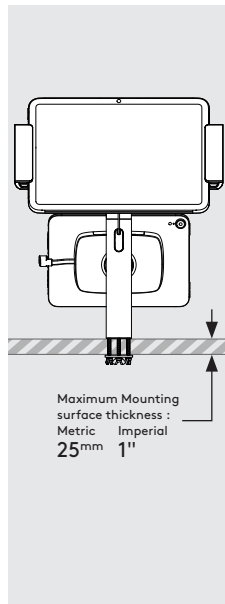
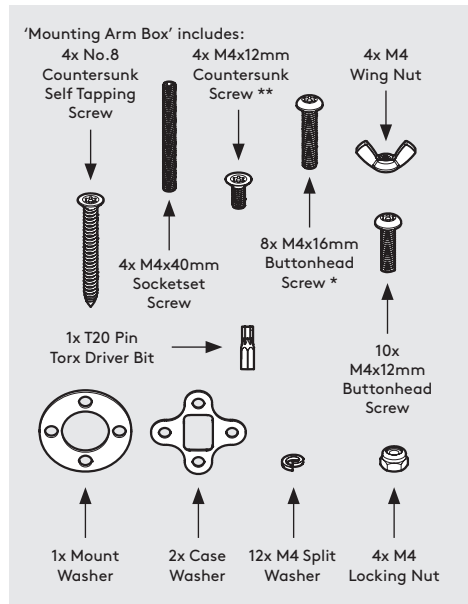
Sheet Code: BP-IM-151\_REV0

Release Date: 16/02/2026

Copyright 2026 SpotSpot Ltd. (T/A Bouncepad) all rights reserved. Confidential, no part of this publication may be reproduced or transmitted in any form without the written permission of the copyright holder.

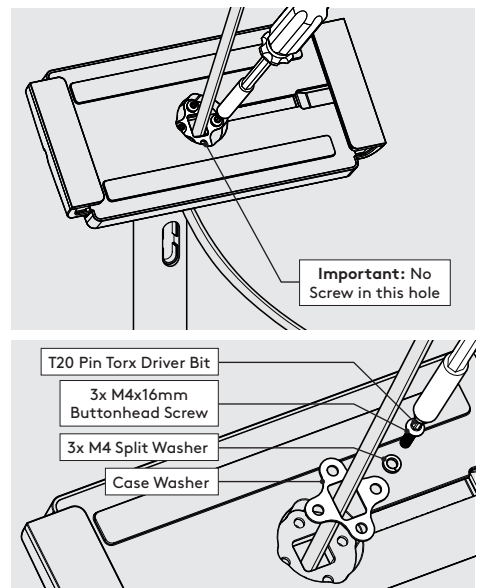
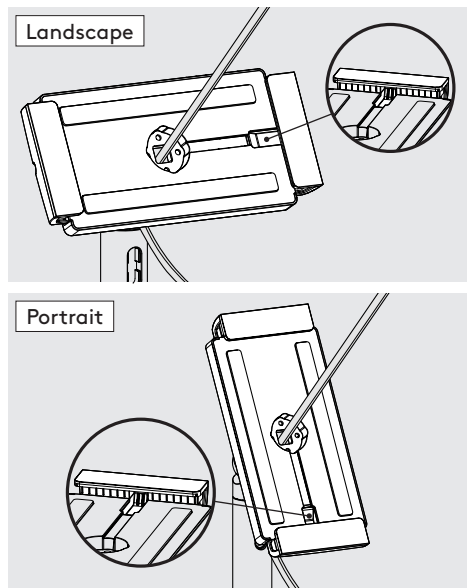
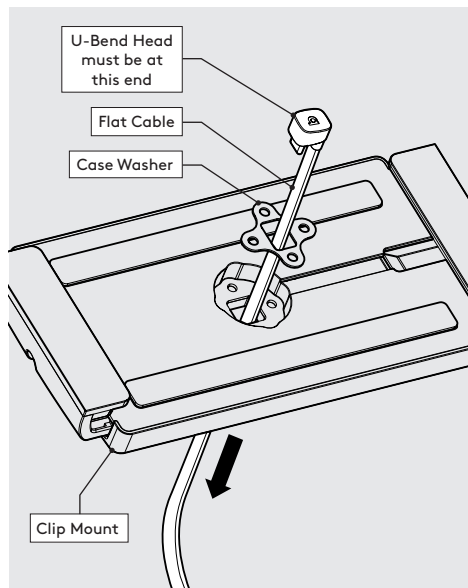
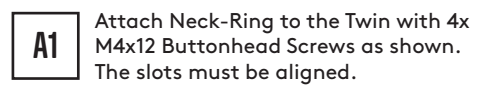


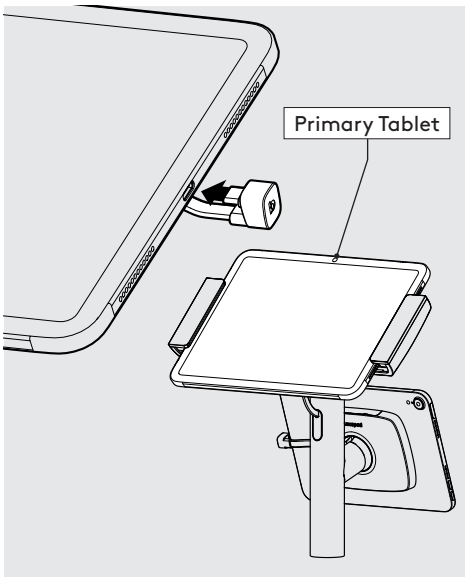
Due to the modular nature of our product range you may receive additional fixings in the fixings kit.



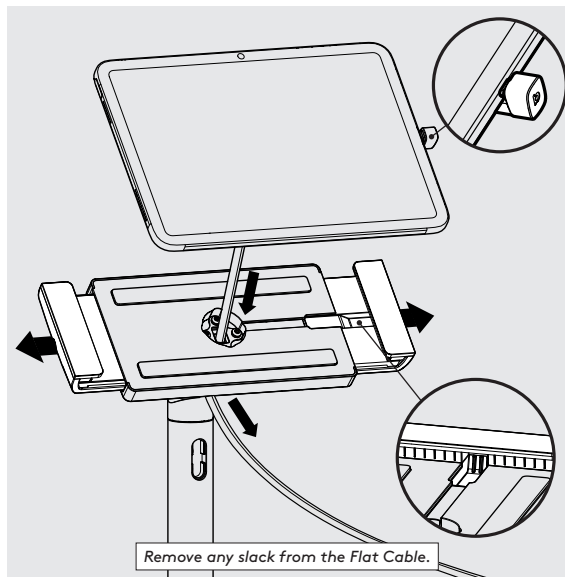
#### Fixings List

Due to the modular nature of our product range you may receive additional fixings in the fixings kit.  
\* Previous models may have been supplied with 20mm.  
\*\* Previous models may have been supplied with 10mm.

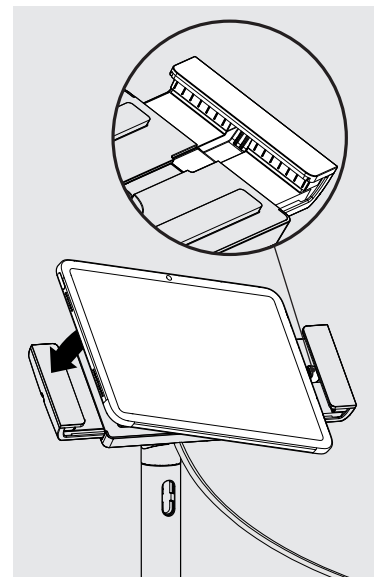




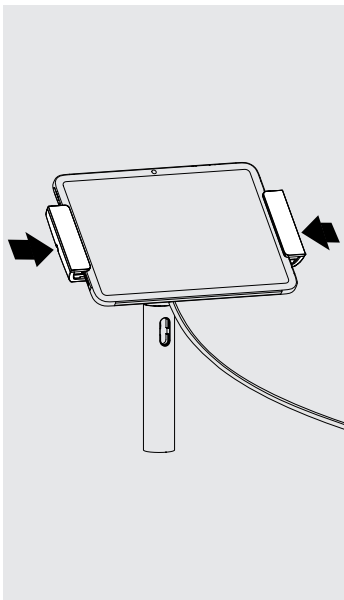
**A5** Attach the Flat Cable to the **Primary Tablet** with the U-Bend Head.



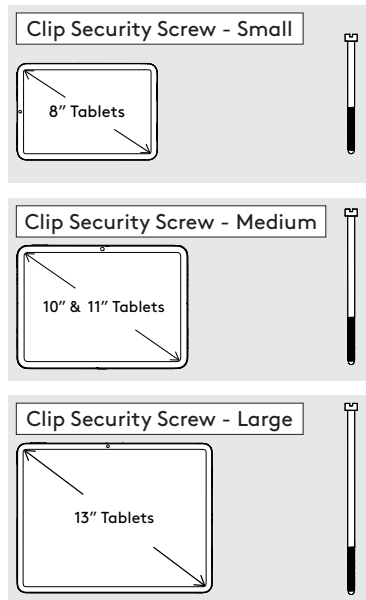
**A6** Open the Clip Mount Jaws & Lower the **Primary Tablet**.



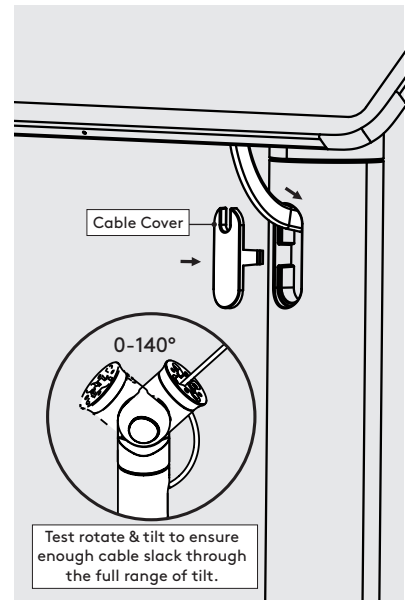
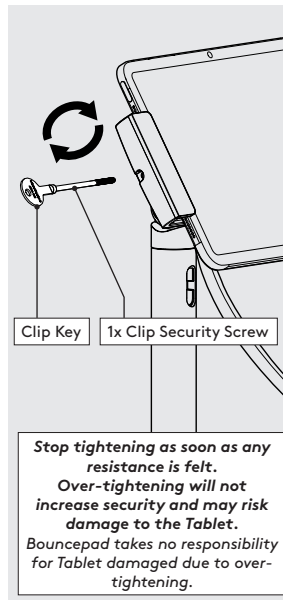
**A7** Locate the Flat Cable's U-Bend Head into the slot & place the **Primary Tablet** into the Clip Mount.



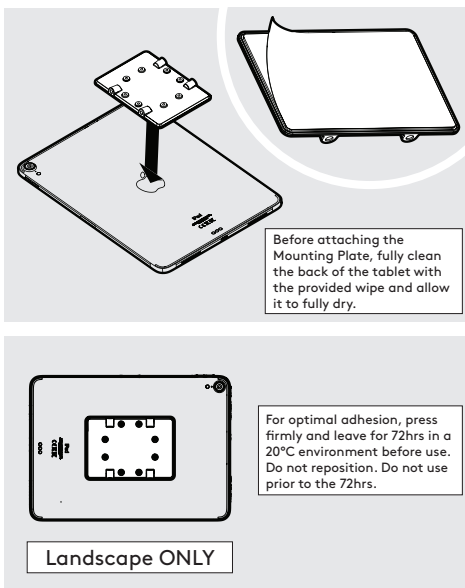
**A8** Close the Clip Mount Jaws around the **Primary Tablet**.



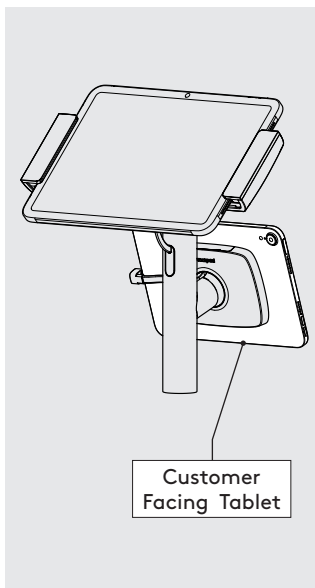
**A9** Secure the Clip Mount Jaws with the correct Clip Security Screw. This must only be done using the Clip Key.



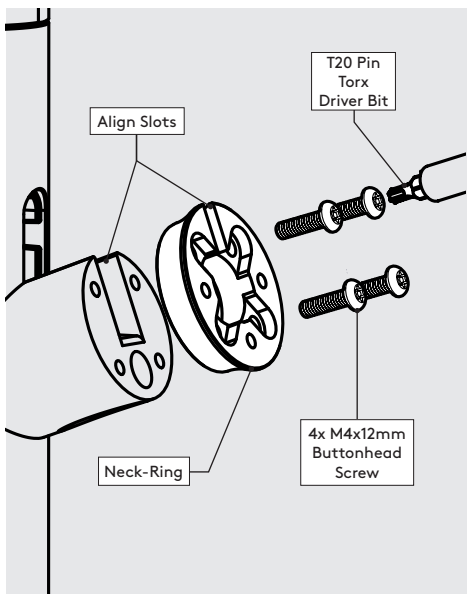
**A10** Feed Flat Cable into the Cable Slot. Ensure there is adequate slack before attaching Cable Cover.



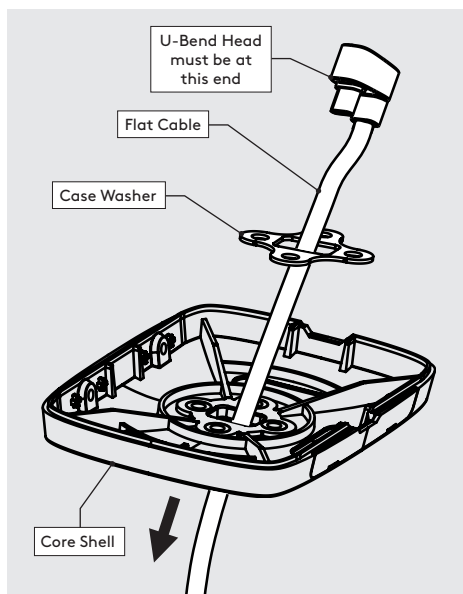
**A11** Remove the Mounting Plate Adhesive Backing. Attach level & centrally to the **Customer Facing Tablet** back as shown.



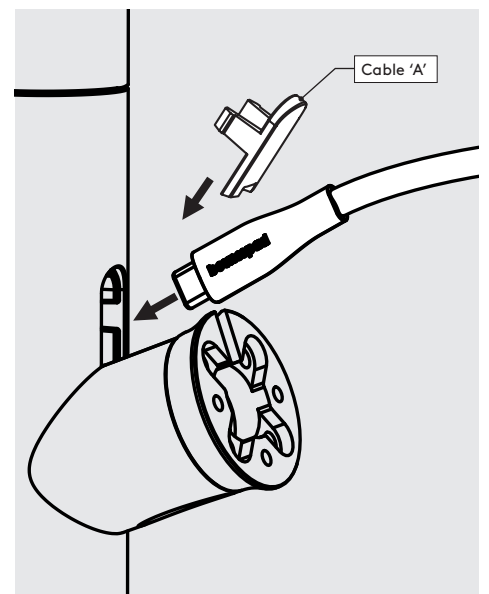
**A12** Secure the Second Screen Mount with 2x M4x12 Buttonhead Screws with the T20 Torx bit.



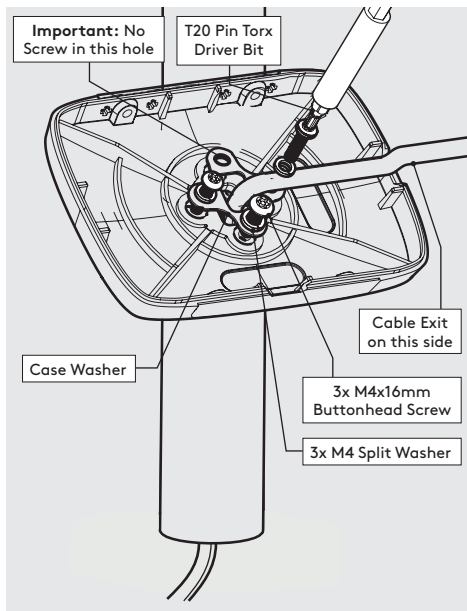
**A13** Attach Neck-Ring to the Second Screen Mount as shown. The slots must be aligned.



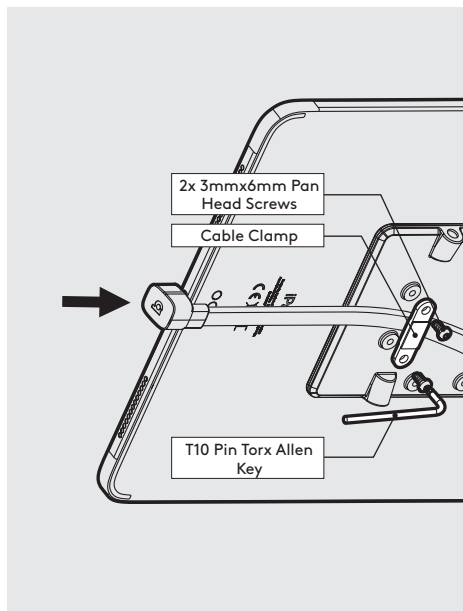
**A14** Feed the Flat Cable through the Case Washer & Core Shell as shown.



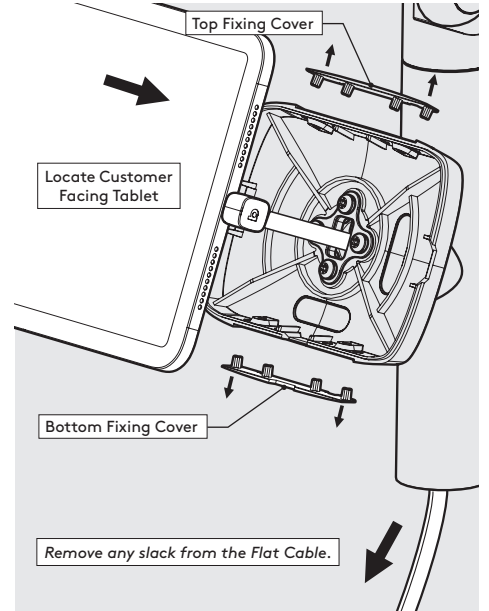
**A15** Feed the Flat Cable into the slot then insert Cover 'A' by snapping into place.



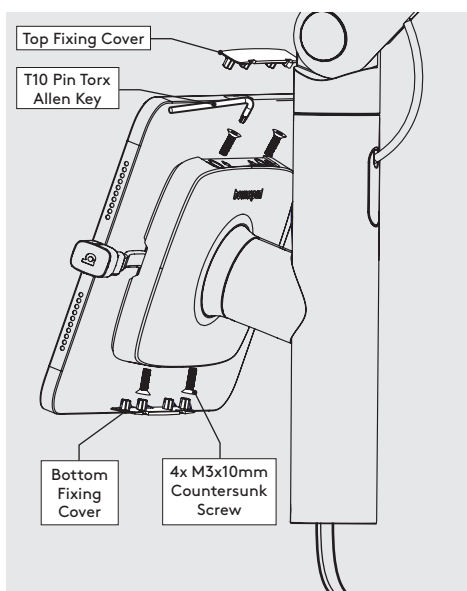
**A16** Attach the Core Shell to Neck-Ring with 3x M4x16mm Buttonhead Screws as shown.



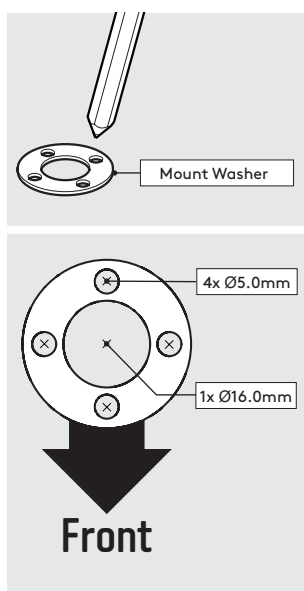
**A17** Plug in & then secure the Flat Cable to the Mounting Plate with the Cable Clamp as shown.



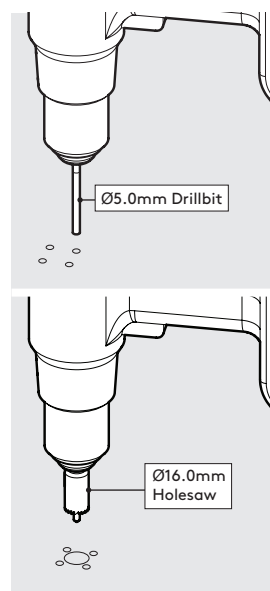
**A18** Remove the Fixing Covers. Feed the Flat Cable into the assembly & locate the **Customer Facing Tablet**.



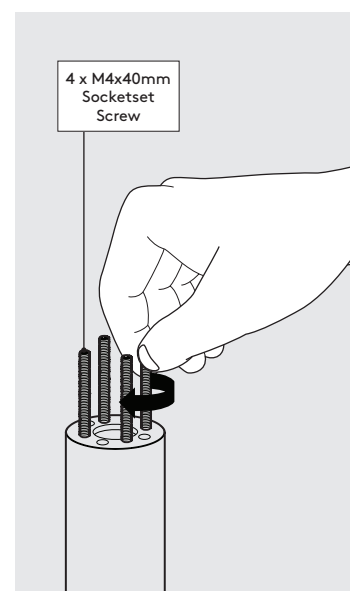
**A19** Secure **Customer Facing Tablet** to the Core Shell as shown. Re-attach the Fixing Covers.



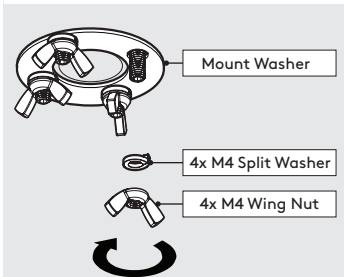
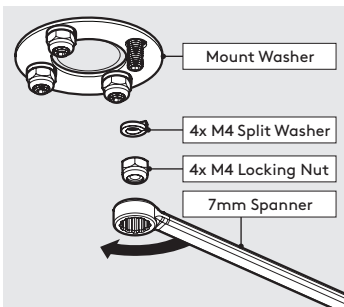
**A20** Using the Mount Washer, mark the drill hole locations.



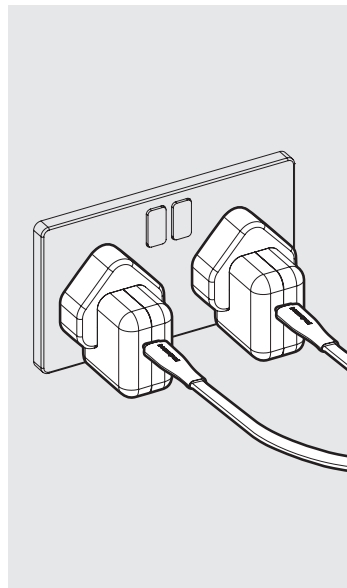
**A21** Drill each hole - using the specified drill size.



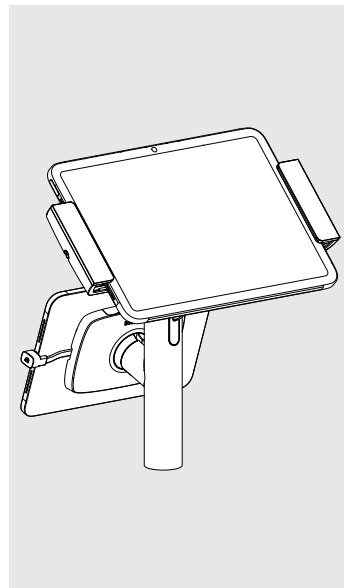
**A22** Locate & screw the Socketset Screws into the Twin as shown.



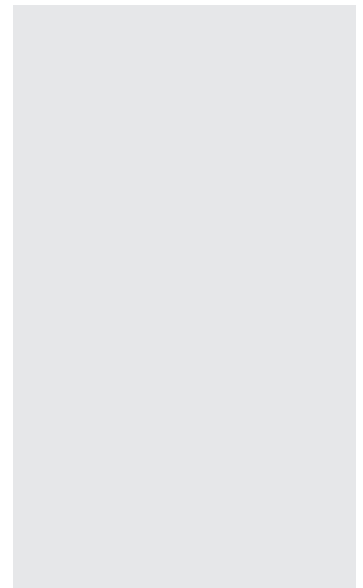
**A23** Secure the Twin to the surface. Locking Nuts offer higher security.



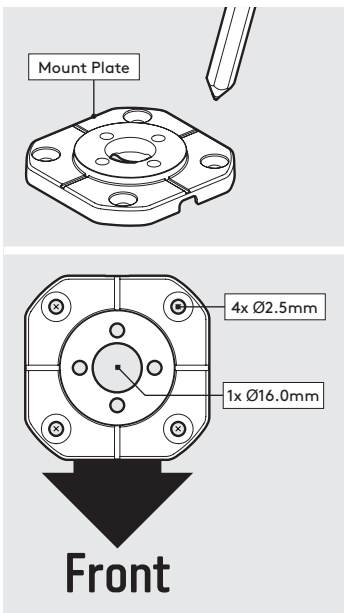
**A24** Connect the Both Flat Cables to a mains power source.



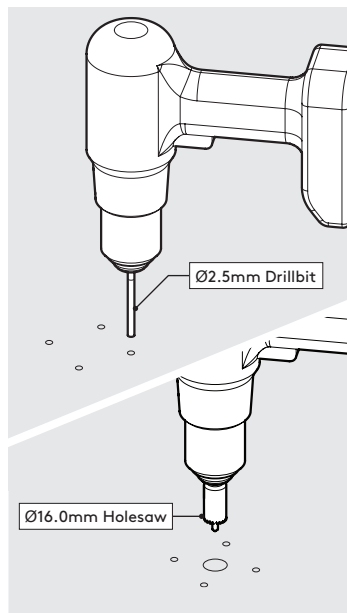
**A25** Installation is now complete.



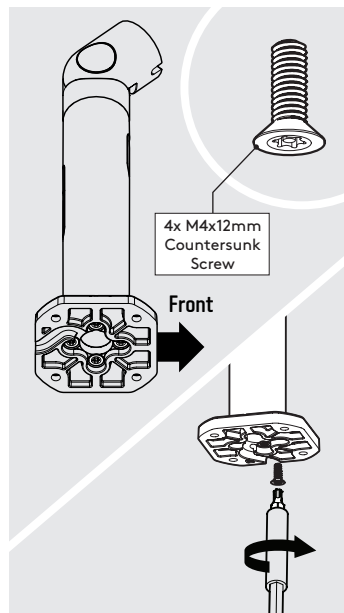
**B** Follow steps B if "Fixing from Above".



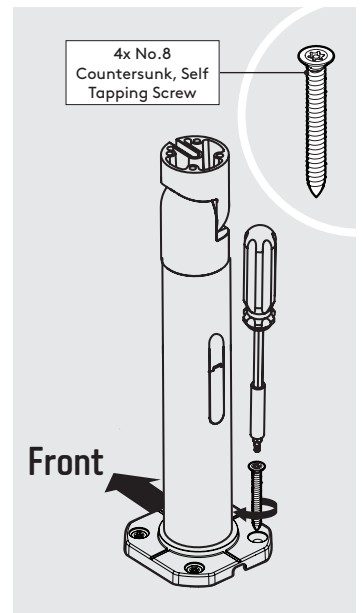
**B1** Using the Mount Plate, mark the drill hole locations as shown.



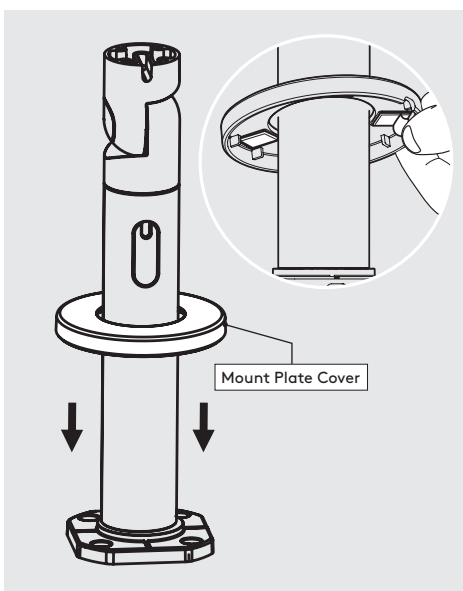
**B2** Drill each hole - using the specified drill sizes.



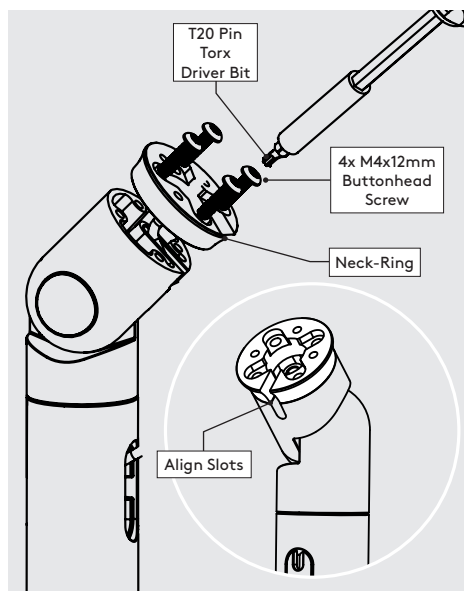
**B3** Join the Twin & Mount Plate in the orientation shown.



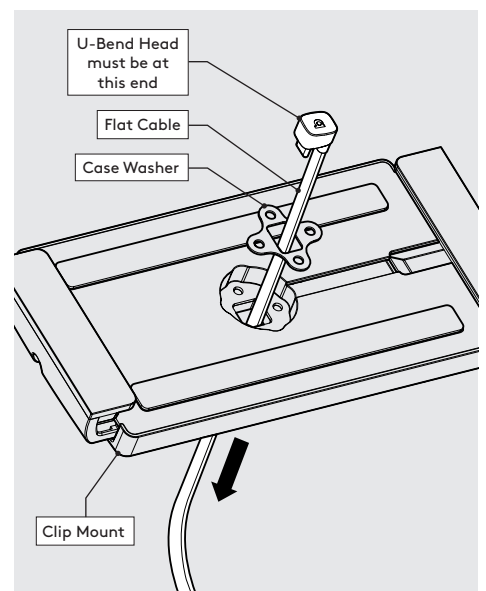
**B4** Secure the Twin to the surface with the 4x Countersunk Fixings.



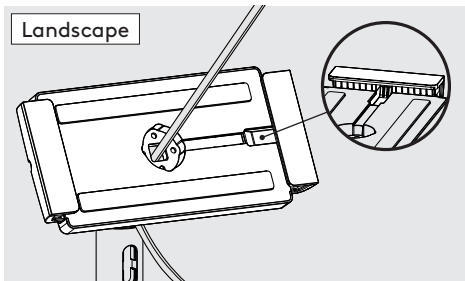
**B5** Adhere the Mount Cover onto the Mount Plate with the adhesive tabs.



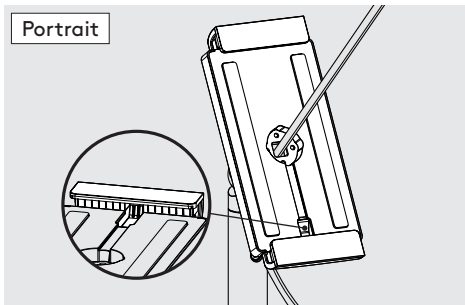
**B6** Attach Neck-Ring to the Twin with 4x M4x12 Buttonhead Screws as shown. The slots must be aligned.



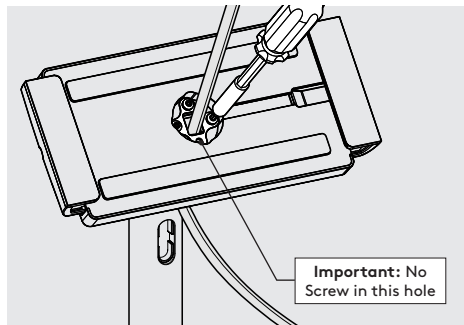
**B7** Feed the Flat Cable through the Case Washer & Clip Mount as shown.



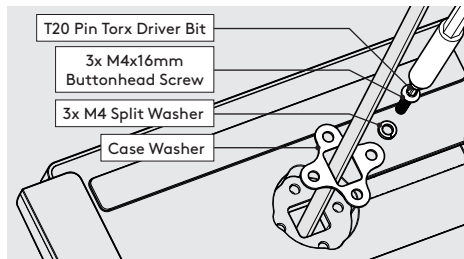
Landscape



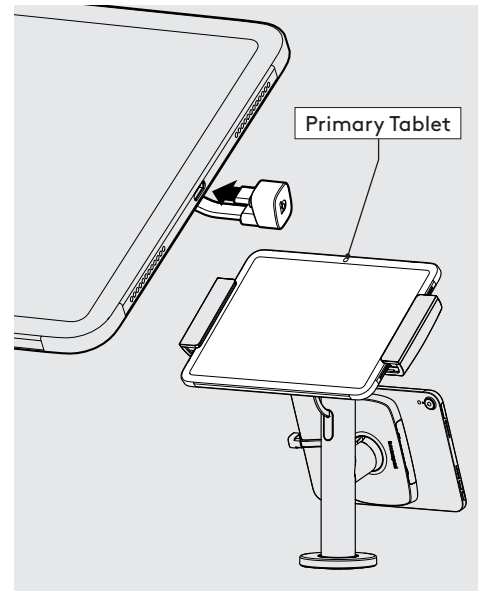
Portrait



Important: No Screw in this hole



- T20 Pin Torx Driver Bit
- 3x M4x16mm Buttonhead Screw
- 3x M4 Split Washer
- Case Washer

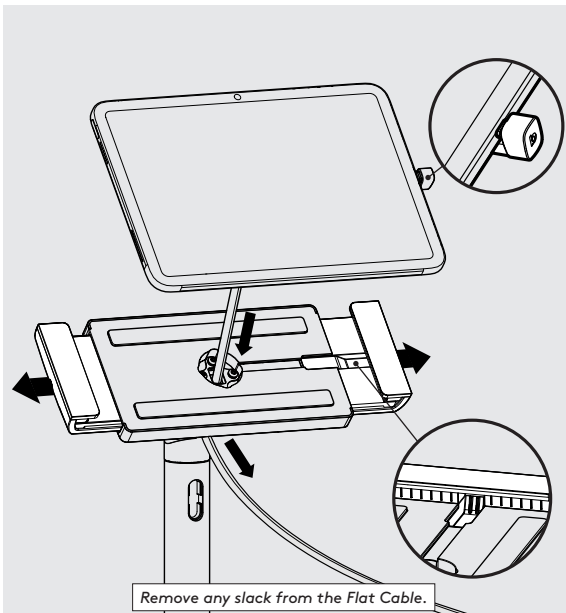


Primary Tablet

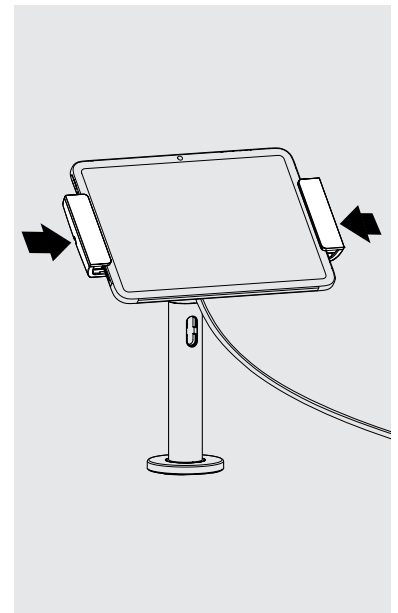
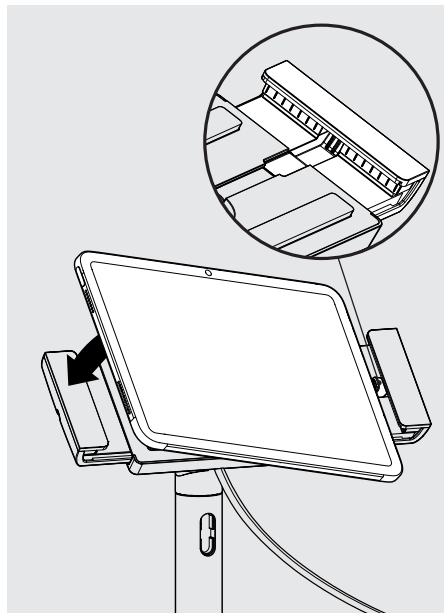
**B8** Locate the Clip Mount onto the Twin in your chosen orientation.

**B9** Attach the Clip Mount to the Neck-Ring as shown.

**B10** Attach the Flat Cable to the Primary Tablet with the U-Bend Head.



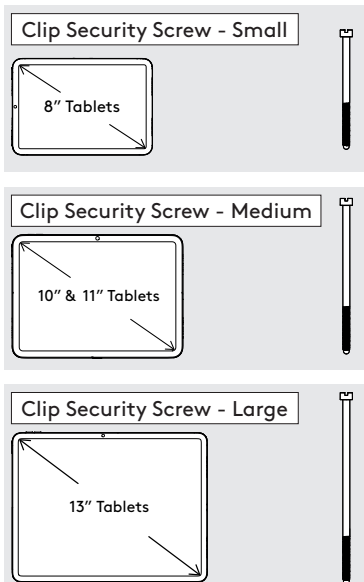
Remove any slack from the Flat Cable.



**B11** Open the Clip Mount Jaws & Lower the Primary Tablet.

**B12** Locate the Flat Cable's U-Bend Head into the slot & place the Primary Tablet into the Clip Mount.

**B13** Close the Clip Mount Jaws around the Primary Tablet.



Clip Security Screw - Small

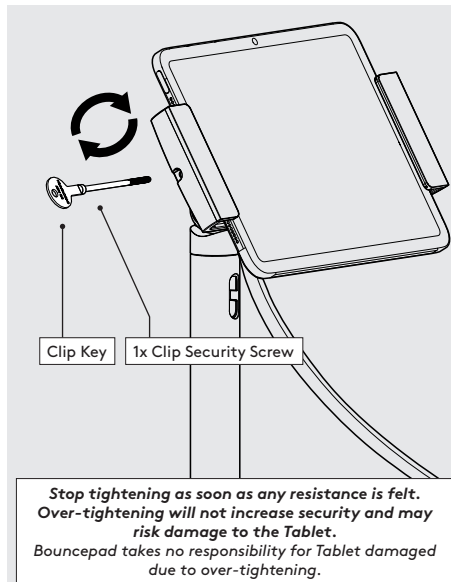
8" Tablets

Clip Security Screw - Medium

10" & 11" Tablets

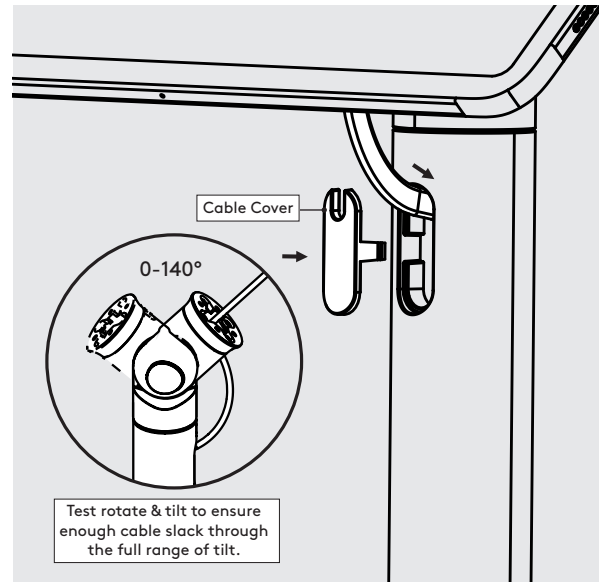
Clip Security Screw - Large

13" Tablets



Clip Key 1x Clip Security Screw

Stop tightening as soon as any resistance is felt. Over-tightening will not increase security and may risk damage to the Tablet. Bouncepad takes no responsibility for Tablet damaged due to over-tightening.



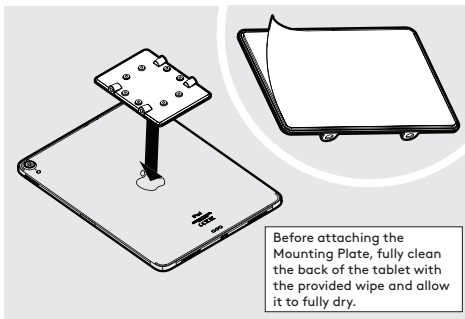
Cable Cover

0-140°

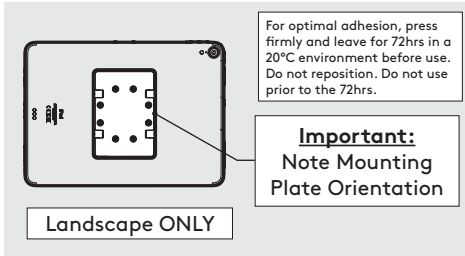
Test rotate & tilt to ensure enough cable slack through the full range of tilt.

**B14** Secure the Clip Mount Jaws with the correct Clip Security Screw. This must only be done using the Clip Key.

**B15** Feed Flat Cable into the Cable Slot. Ensure there is adequate slack before attaching Cable Cover.



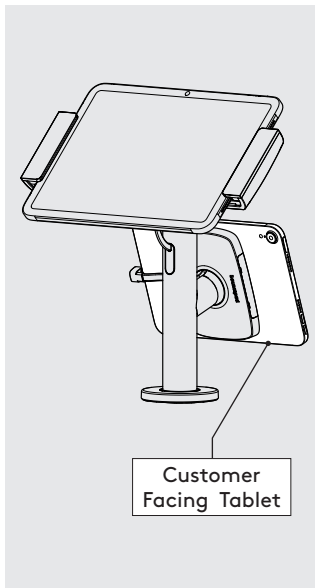
Before attaching the Mounting Plate, fully clean the back of the tablet with the provided wipe and allow it to fully dry.



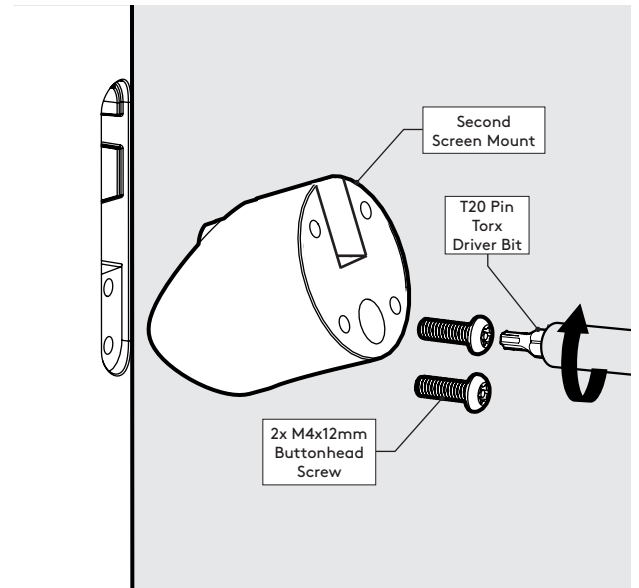
For optimal adhesion, press firmly and leave for 72hrs in a 20°C environment before use. Do not reposition. Do not use prior to the 72hrs.

**Important:**  
Note Mounting Plate Orientation

Landscape ONLY



Customer Facing Tablet



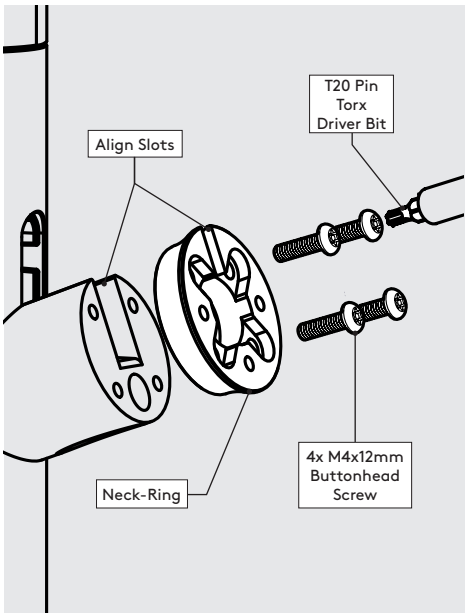
Second Screen Mount

T20 Pin Torx Driver Bit

2x M4x12mm Buttonhead Screw

**B16** Remove the Mounting Plate adhesive backing. Attach level & centrally to the Customer Facing Tablet back as shown.

**B17** Secure the Second Screen Mount with 2x M4x12 Buttonhead Screws with the T20 Torx bit.



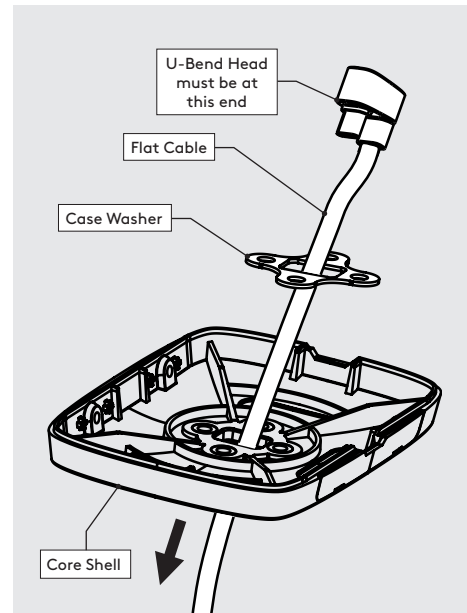
Align Slots

T20 Pin Torx Driver Bit

Neck-Ring

4x M4x12mm Buttonhead Screw

**B18** Attach Neck-Ring to the Second Screen Mount as shown. The slots must be aligned.



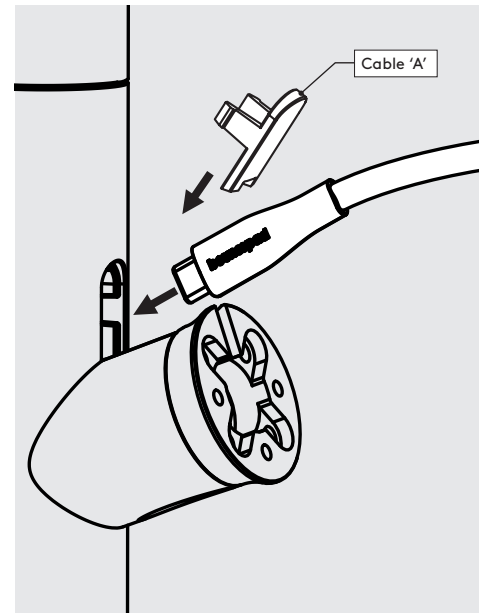
U-Bend Head must be at this end

Flat Cable

Case Washer

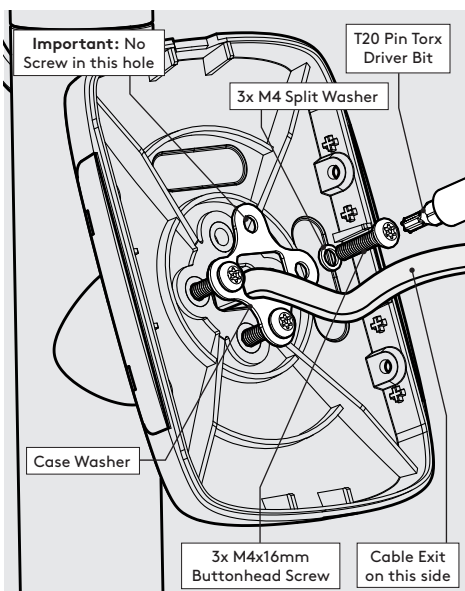
Core Shell

**B19** Feed the Flat Cable through the Case Washer & Core Shell as shown.



Cable 'A'

**B20** Feed the Flat Cable into the slot then insert Cover 'A' by snapping into place.



Important: No Screw in this hole

T20 Pin Torx Driver Bit

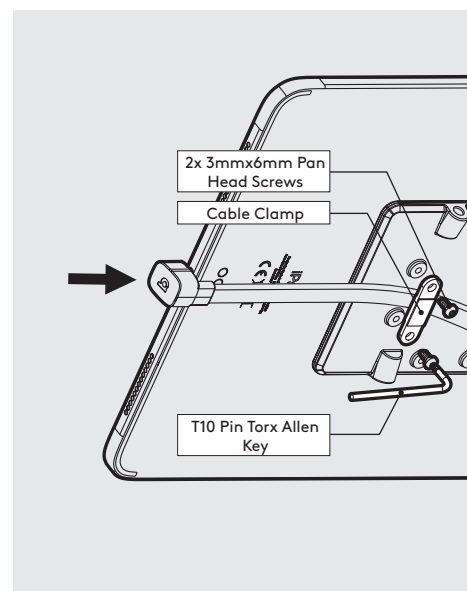
3x M4 Split Washer

Case Washer

3x M4x16mm Buttonhead Screw

Cable Exit on this side

**B21** Attach the Core Shell to Neck-Ring with 3x M4x16mm Buttonhead screws as shown.

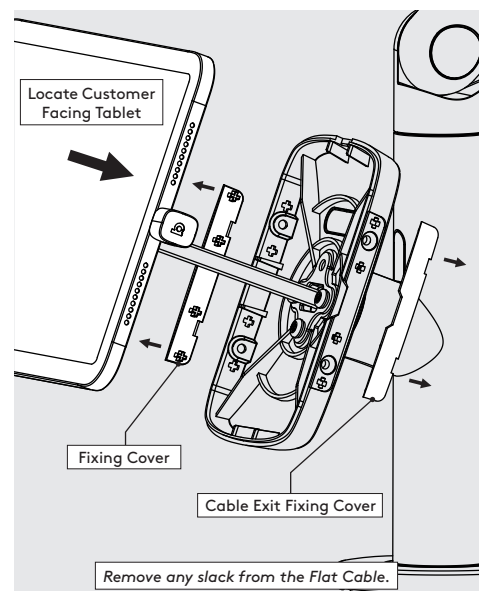


2x 3mmx6mm Pan Head Screws

Cable Clamp

T10 Pin Torx Allen Key

**B22** Plug in & then secure the Flat Cable to the Mounting Plate with the Cable Clamp as shown.



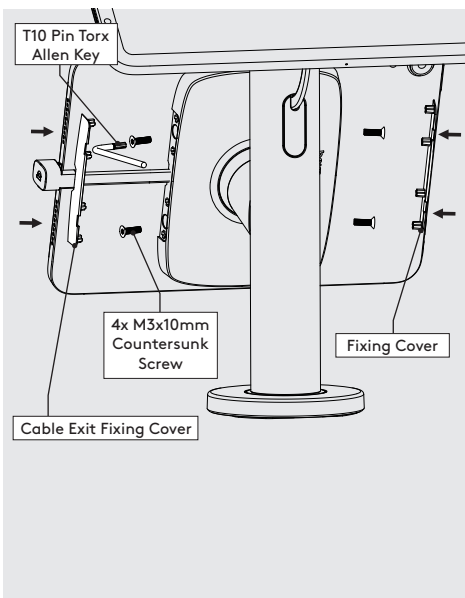
Locate Customer Facing Tablet

Fixing Cover

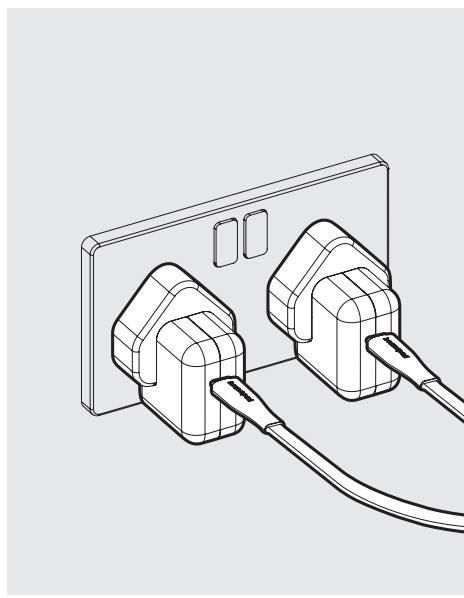
Cable Exit Fixing Cover

Remove any slack from the Flat Cable.

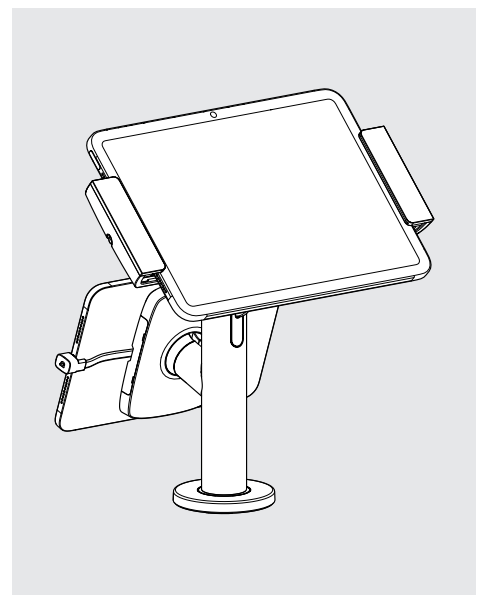
**B23** Remove the Fixing Covers. Feed the Flat Cable into the assembly & locate the Customer Facing Tablet.



**B24** Secure **Customer Facing Tablet** to the Core Shell as shown. Re-attach the Fixing Covers.



**B25** Connect the both Flat Cables to a Mains Power Source.



**B26** Installation is now complete.