



The product images are for illustration purposes only. Actual product appearance, ports, keyboard layout, and accessories may vary by model.

**Premier Support** - A direct 24x7x365 line to our most elite technicians.

- Advanced technical support, 24x7x365, in more than 100 markets
- Technical Account Managers for proactive relationship and escalation management
- Comprehensive hardware & OEM software support
- Priority on service delivery and repair parts
- Single point of contact for simplified end-to-end case management
- Lenovo Service Connect Portal for customized reporting and product support

**Accidental Damage Protection** - Protection of your PC from the unexpected.

Experience shows that a significant portion of devices may be damaged (and not covered under warranty) in the first three years. Lenovo's Accidental Damage Protection service covers accidents beyond the system warranty such as drops, spills, bumps and even electrical surges. Make sure your new device has maximum protection, avoid unplanned costs and get peace of mind.

**Base Warranty** - Included with the systems you purchase, default 1- or 3-year coverage window.

**Warranty Extensions & Upgrades** - Service and protection that's right for your circumstances.

- Pick Up & Return Courier
- Technician Installed Customer
- Onsite Support
- Replaceable Unit Service
- International Warranty Upgrade

**Recommended Accessories** United Kingdom



**Lenovo Wired VoIP Headset 5000 (Teams)**

4XD1R88995



**Lenovo Essential Wireless Combo Keyboard & Mouse Gen2 Black-UK English**

4X31R64490



**Lenovo 16" Laptop Everyday Backpack B510**

4X41U80414



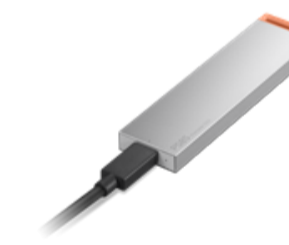
**Lenovo 16-inch Premium Clarity Privacy Filter for ThinkBook 16 Gen 4 (16:10)**

4XJ1U03940



**Lenovo Dual USB-C 65W GaN Charger**

GOA6065WUK



**Lenovo PS8S Portable SSD 4TB**

4XB1T91892

>> [View More Accessories](#)

**PERFORMANCE****Processor**

Intel Core™ Ultra 5 125H, 14C (4P + 8E + 2LPE) / 18T, Max Turbo up to 4.5GHz, 18MB Intel® Smart Cache

**AI PC Category**

AI PC<sup>[1]</sup>

**NPU**

Integrated Intel® AI Boost, up to 11 TOPS

**Graphics**

Integrated Intel® Arc™ Graphics<sup>[2]</sup>

**Chipset**

Intel® SoC Platform

**Memory**

2x 8GB SODIMM DDR5-5600

**Memory Slots**

Two DDR5 SODIMM slots, dual-channel capable

**Max Memory<sup>[3]</sup>**

Up to 64GB DDR5-5600

**Storage**

512GB SSD M.2 2242 PCIe® 4.0x4 NVMe® Opal 2.0

**Storage Slot**

Two M.2 slots • One M.2 2242 PCIe® 4.0 x4 slot • One M.2 2280 PCIe® 4.0 x4 slot

**Max Storage Support<sup>[4]</sup>**

Up to two drives, 2x M.2 SSD • M.2 2242 SSD up to 1TB • M.2 2280 SSD up to 1TB

**Optical**

None

**Card Reader**

No card reader

**Audio Chip**

High Definition (HD) Audio, Senary SN6141 codec

**Speakers**

Stereo speakers, 2W x2, Dolby Atmos®, audio by HARMAN

**Microphone**

2x, Array

**Camera**

FHD 1080p with Privacy Shutter

**Battery**

57Wh

**Power Adapter**

65W USB-C® (3-pin)

**DESIGN****Display**

16" WUXGA (1920x1200) IPS 300nits Anti-glare, 45% NTSC<sup>[5]</sup>

**Touchscreen**

None

**Screen-to-Body Ratio**

90.7%

**Pen**

Pen Not Supported

**Keyboard**

Backlit, Thai

**Dimensions (WxDxH)<sup>[6]</sup>**

356.1 x 247.7 x 20.20 mm (14.02 x 9.75 x 0.80 inches)

**Weight<sup>[7]</sup>**

Starting at 1.78 kg (3.92 lbs)

**Case Color**

Black

**Case Material**

Aluminium (Top), PC-ABS (Bottom)

**SOFTWARE****Operating System**

Windows® 11 Pro, English

**Bundled Software**

None

**CONNECTIVITY****WLAN + Bluetooth**

Intel® Wi-Fi® 6E AX211, 802.11ax 2x2 + BT5.3

**WWAN**

WWAN Not Supported

**SIM Card**

No physical SIM card inbox

**Ethernet**

100/1000M (RJ-45)

**NFC**

No NFC

**Standard Ports**

- 1x USB-A (USB 5Gbps / USB 3.2 Gen 1)
- 1x USB-A (USB 10Gbps / USB 3.2 Gen 2), Always On
- 1x USB-C® (USB 20Gbps / USB 3.2 Gen 2x2), with USB PD 3.0 and DisplayPort™ 1.4
- 1x USB-C® (Thunderbolt™ 4 / USB4® 40Gbps), with USB PD 3.0 and DisplayPort™ 2.1
- 1x HDMI® 2.1, up to 4K/60Hz
- 1x Headphone / microphone combo jack (3.5mm)
- 1x Ethernet (RJ-45)

**Docking**

Various docking solutions supported via Thunderbolt™ or USB-C®. For more compatible docking solutions, please visit [Docking for ThinkPad® E16 Gen 2 \(Intel®\)](#)

**SECURITY & PRIVACY****ThinkShield**

ThinkShield is a comprehensive security solution that encompasses hardware, software, and supply chain components. For more details, visit [here](#)

**Security Chip**

Discrete TPM 2.0 Enabled

**Physical Locks**

Kensington Nano Security Slot™, 2.5 x 6 mm

**Smart Card Reader**

No Smart Card Reader

**Fingerprint Reader**

Touch Style, Match-on-Chip, Integrated in Power Button

**Other Security**

Camera privacy shutter

**MANAGEABILITY****System Management**

Non-vPro®

**SERVICE****Base Warranty**

1-year, Courier or Carry-in

**Included Upgrade**

3Y Onsite upgrade from 1Y Courier/Carry-in

**ACCESSORIES****Bundled Accessories**

None

**CERTIFICATIONS****Green Certifications**

- ENERGY STAR® 9.0
- EPEAT™ Gold Registered<sup>[8]</sup>
- ErP Lot 6/26
- RoHS compliant
- TCO Certified 9.0

**Mil-Spec Test**

MIL-STD-810H military test passed

**Other Certifications**

TÜV Rheinland® Low Blue Light (Software Solution)

**MODEL**

**TopSeller** : No **EAN / UPC / JAN:** 199272254645

**Announce Date:** 2025-07-16 **End of Support** : 2030-10-19

**Note:**

<sup>[1]</sup> AI PCs have a NPU capable of 10+ TOPs to run the Copilot assistant by pressing the optional Microsoft Copilot key or using Win + C.

- Please refer to the official [Lenovo store website](#) or contact a local Lenovo sales representative or authorized business partner for current inventory and purchase options.
- Lenovo reserves the right to change specifications without notice. To see more note information, please access the [web page](#).