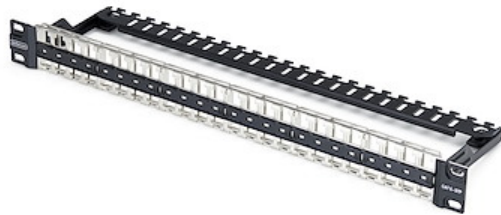


48 Port 1U Blank Keystone Patch Panel with Cable Management Bar, Rackmount Cat6 Patch Panel for RJ45 STP Ethernet Network Jacks

Product ID: C6PANELSTP481UCM



Neatly organize Ethernet cable terminations in rack-mounted network setups, using this 48-Port 1U Blank Keystone Patch Panel with Cable Management Bar. It is designed for high-density installations such as wiring closets and data centers, where modular port configuration and clean cable routing are key to long-term serviceability.

The 1U keystone patch panel supports standard shielded (STP) and unshielded (UTP) RJ45 keystone jacks, allowing each port to be configured to match your cabling type and installation standards. Numbered port labels along the front panel ensure quick identification for troubleshooting and routine maintenance.

The steel housing features a black powder-coated finish for scratch resistance and long-term durability. An integrated cable management bar with tie-down slots helps reduce cable strain, while the included grounding wire supports proper termination for shielded installations.

Certifications, Reports and Compatibility



Applications

- For installation in standard 19in network racks and cabinets
- Integrated grounding wire supports STP Keystone jacks for Cat6a and Cat8 cabling
- Clearly numbered keystone ports make it easy to identify your cable runs

Features

- **Customize Patch Panel Layout**: Install up to 48 STP or UTP RJ45 keystone jacks for high-performance networking; 1U blank keystone panel features a toolless, modular design with clearly numbered ports; Ideal for modular and scalable network builds
- **Route Cables Cleanly**: Neatly organize cabling with the rear cable management bar, featuring individual U-shaped cable guides and side anchor slots for attaching cable ties; Maintain a tidy rack layout for improved airflow, easy access and troubleshooting
- **Protect Shielded Connections**: Attach the grounding wire to the rack ground point to support STP Cat6a or Cat8 keystone jacks; Minimize EMI for consistent signal clarity and optimal network speeds in high-density server racks and enclosures
- **Mount in Any Standard Rack**: Includes mounting screws and cage nuts for installation into any 19in rack or wall-mount enclosure; Toolless keystone slots support fast, flexible deployment during upgrades or rollouts
- **The IT Pro's Choice**: Designed for reliability in edge and on-prem deployments, our networking solutions are lab-tested and field-proven for seamless integration and maximum uptime; Backed by free lifetime 24/5 multi-lingual technical assistance

Environmental

Warranty	3 Years
Operating Temperature	-10°C to 60°C (14°F to 140°F)
Storage Temperature	-40°C to 70°C (-40°F to 158°F)
Humidity	85%

Physical Characteristics

Color	Black
Material	Steel
Product Length	19.0 in [482.6 mm]
Product Width	5.0 in [126.1 mm]
Product Height	1.7 in [44.3 mm]
Weight of Product	1.3 lb [0.6 kg]

Packaging Information

Package Length	2.8 in [7.0 cm]
Package Width	20.3 in [51.5 cm]

Package Height 2.4 in [6.0 cm]

Shipping (Package) Weight 1.6 lb [0.7 kg]

What's in the Box

Included in Package 1 - 1U 48-Port Patch Panel w/Cable Management
1 - Product Documentation

Warranty Information

Warranty 3 Years

****Product appearance and specifications are subject to change without notice.***