



# Cubi NUC AI+ 3MG

Infokit V1

CND Product Marketing | Mar-2026



# INNOVATE BEYOND

# Cubi NUC AI+ 3MG



 **Copilot+PC**

## Cubi NUC AI+ Series

Business & Productivity PC



Copilot+ PCs are the fastest, most intelligent and secure Windows PCs ever  
Unlock efficiency and innovation with Copilot+ PCs

## Productivity

Up to

Intel®  
Core™ Ultra 9  
Processor



Total Up to

100 TOPS

With Intel® AI Boost NPU

50 TOPS



Copilot+PC

Data-transfer speeds Up to

40Gbps

Support Up to

4-Display



## Reliability



Fingerprint  
Security



Copilot+PC

Cubi NUC AI+ Series

Business & Productivity PC

## Sustainability

msi



Renewable  
Energy



## Operability



MSI  
Power Link



Optional External  
Power Switch



Cable Organizer



Tool-less  
Design

Mini. Sleek. Powerful.



# 0.51-liter, 37.5mm Thick



# Power in the Palm of Your Hand



The Cubi NUC offers a perfect balance of Mini and Power, featuring a 0.51-liter chassis.



**0.51-Liter**

119.60 x 115.20 x 37.50 mm  
(4.71 x 4.54 x 1.48 inch)

# Cubi NUC AI+ 3MG - Productivity



Work Smart. Achieve More.

# Newly Upgraded for AI Potential



Powered by up to an Intel® Core™ Ultra 9 processor, it brings the perfect combination of Performance, responsiveness, and stunning visuals. The latest NPU accelerates AI programs with more than 50 NPU TOPS to enhance the AI workloads. Unlock new possibilities easier, faster, smarter, and smoother - from virtual meetings to data-intensive applications.



**Copilot+PC**



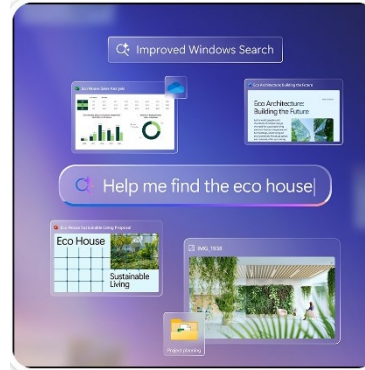
Total up to  
**100 TOPS**

Intel® AI Boost NPU  
**100 TOPS**

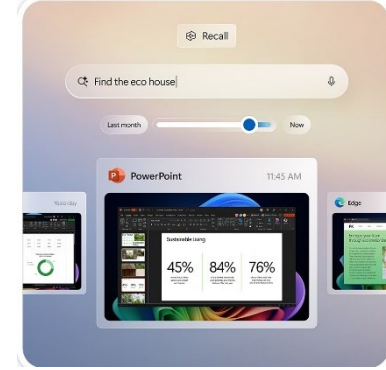
# Cubi NUC AI+ 3MG: Copilot+ PC



msi



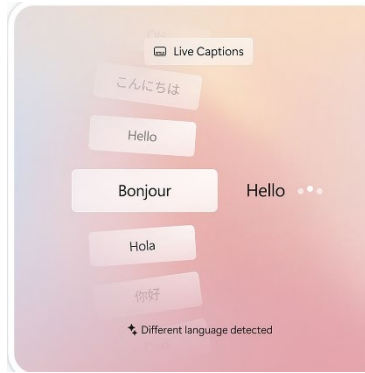
Improved Windows Search



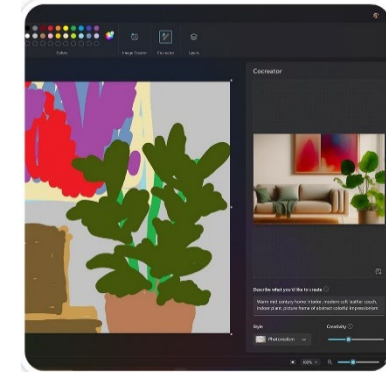
Recall



Click-to-Do

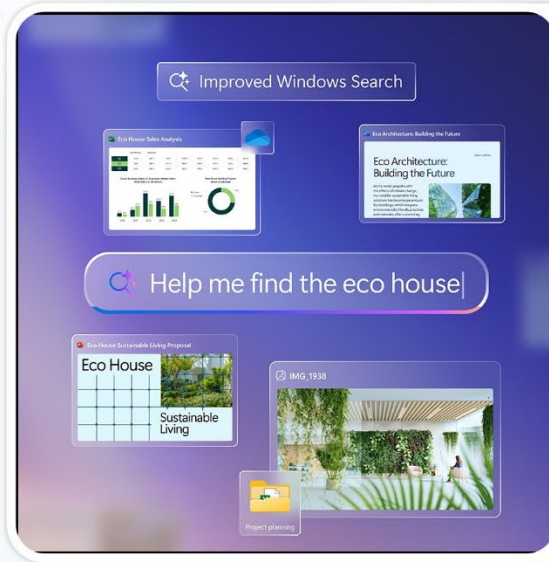


Live Captions with Live Translation



Cocreator

# Copilot+ PC Features: Improved Windows Search



## Copilot+ PC

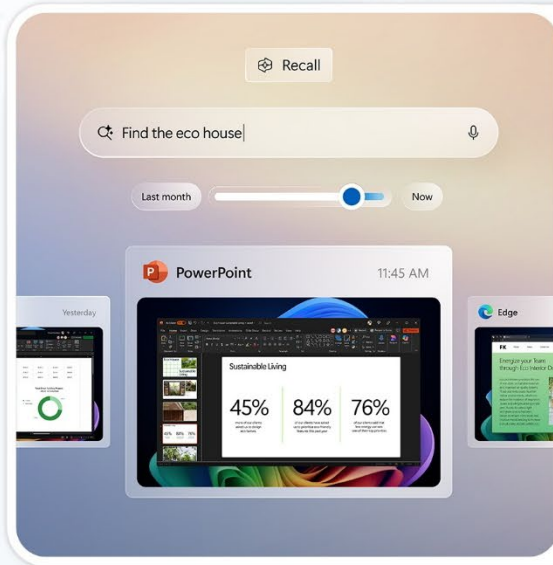
### Improved Windows Search

Find what you need fast and easy . Search documents, images, and files faster with Improved Windows Search\* in Windows 11 Pro using simple descriptions.

\*Improved Windows search works with specific text, image, and document formats only; optimized for select languages (English, Chinese (Simplified), French, German, Japanese, and Spanish). See Copilot+ PC FAQs [Here](#).

\*More information about the Improved Windows Search: <https://msi.gm/Improved-Windows-Search>

# Copilot+ PC Features: Recall



## Copilot+ PC

### Retrace your steps with Recall

Searching for a document, email or webpage can take time. With Recall (preview)\*, just describe what you remember and find what you need—fast.

\*Recall (preview) requires Windows Hello Enhanced Sign-in Security. Coming to the European Economic Area later in 2025. Optimized for select languages (English, Chinese (Simplified), French, German, Japanese, and Spanish). Content-based and storage limitations apply. Enterprise license required for some policy-enabled management controls. See Copilot+ PC FAQs [Here](#).

\*More information about the Recall: <https://msi.gm/Recall>

# Copilot+ PC Features: Click-to-Do



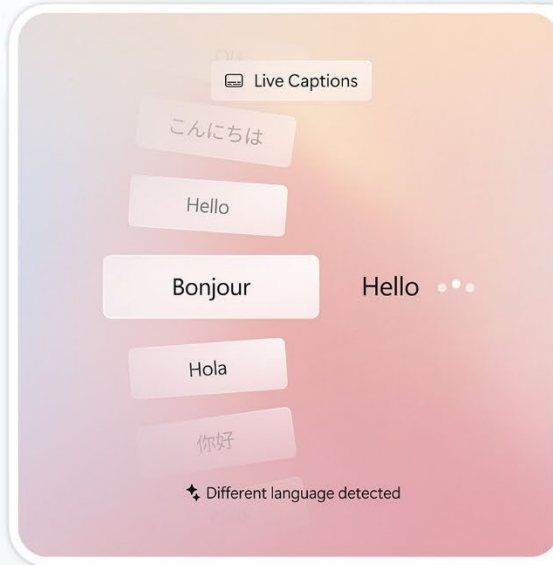
## Copilot+ PC

### Click-to Do Acts on what you see

Analyze text and images on your screen with Click to Do (preview)\* to quickly take actions like copy, share, or rewrite—all in one click.

\*Click to Do (preview) available image and text actions vary by device, region, language, and character set. Subscription required for some actions. Click to Do coming to the European Economic Area later in 2025. See Copilot+ PC FAQs [Here](#).

\*More information about the Click-to-Do: <https://msi.gm/Click-to-Do>



## Copilot+ PC

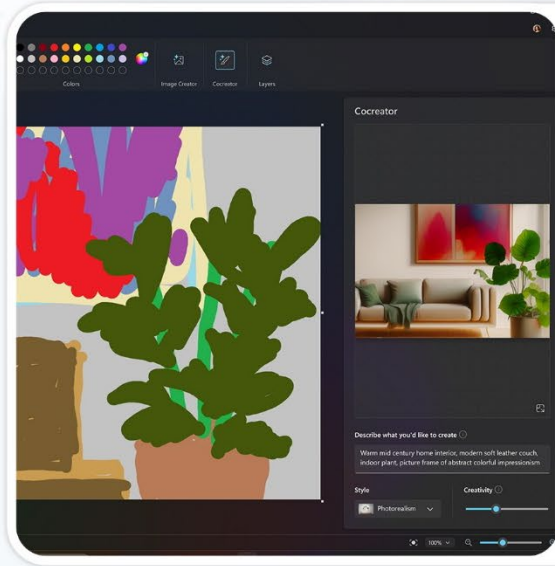
### Live Captions, Live Translations

Amplify your impact across language barriers. Understand almost any call, conversation, or recording with Live Captions\* with real-time translation from 40+ languages into English and 25+ languages into Chinese (Simplified).

\*Amplify your impact across language barriers. Understand almost any call, conversation, or recording with Live Captions\* with real-time translation from 40+ languages into English and 25+ languages into Chinese (Simplified). [Here](#).

\*More information about the Live Captions: <https://msi.gm/Live-Captions>

# Copilot+ PC Features: Cocreator



## Copilot+ PC

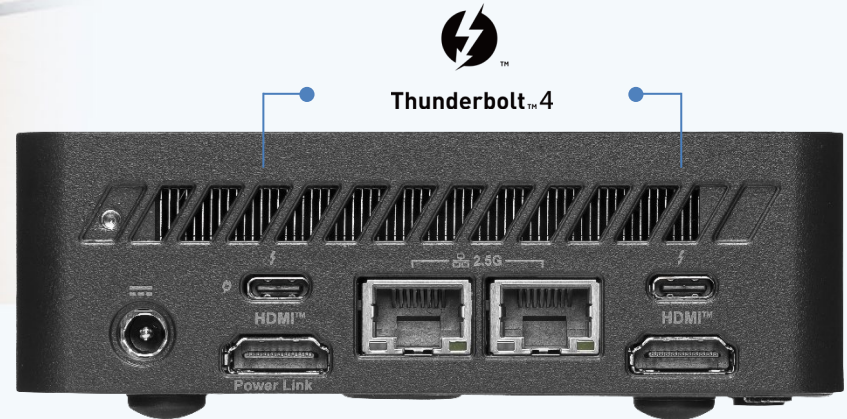
**You sketch it. Cocreator creates it.**

Let your inner artist thrive with guidance from Cocreator.

# Thunderbolt 4: A Single Cable to Serve All



The Thunderbolt 4 enables rapid data transfer up to 40 Gbps & power delivery up to 98W, which is crucial for handling large datasets in AI applications, making it an excellent choice for both charging and display through a single port.



# PRODUCTIVITY



## Wi-Fi 7 Support

Wi-Fi 7 delivers ultra-fast speeds and increased network capacity, which is essential for efficiently managing AI workloads.

A 3D rendering of the text 'Wi-Fi 7' in a bold, blue font, set against a background of glowing blue lines and light rays, suggesting a high-tech or digital environment.

Wi-Fi 7

## DDR5 Dual-Channel Memory

DDR5 memory with dual-channel can enhance work efficiency and quality, processing large amounts of data and complex multitasking quickly and reducing waiting times and delays.

\*The actual specification will vary by model.

# PRODUCTIVITY

# PRODUCTIVITY



## MSI with Microsoft Copilot

Work smarter, be more productive, boost creativity, and stay connected with Copilot—an AI companion adapts to your needs.



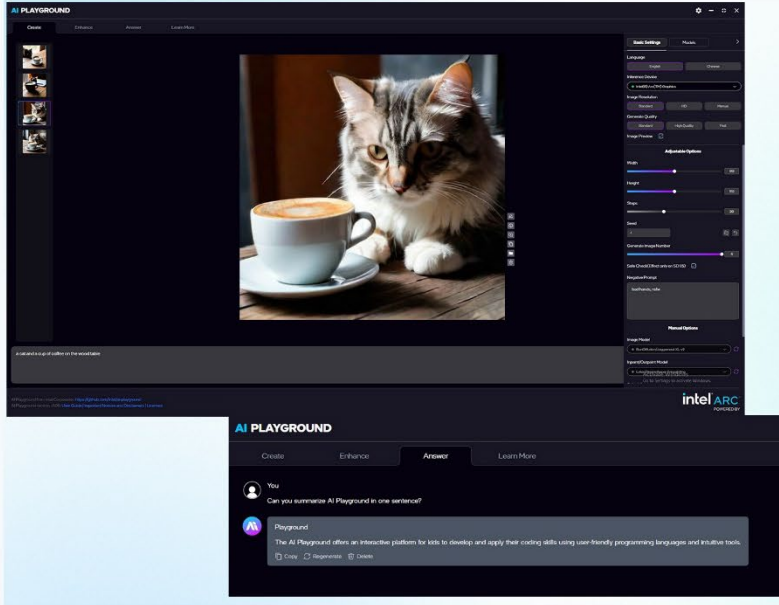
Copilot

Certainly! Here's a summary of the Tender Notice document:

- 1. Scope of Work:** The office intends to purchase All-in-One Computers along with software for verbatim recording of discussions held in Parliament and various Committees.
- 2. Specifications:** Eighty All-in-One Computers are proposed to be procured. The specification details are provided in Annexure-I.
- 3. Quality & Certifications:** Goods must be of high quality, unused, and free from defects. OEM certifications and ISO 14001 certification are required.
- 4. Warranty & Complaint Redressal:** The product should have a 3-year onsite warranty from the OEM.

Additionally, the document outlines website

# Intel® AI Playground



Offering various AI capabilities, including image creation, enhancement, and chatbot responses, all functions run locally on the PC, ensuring privacy and control over content and input.

For more information, please refer to the official Intel® website:  
<https://msi.gm/Intel-AI-Playground>

Please visit the introductory Blog here:  
<https://www.msi.com/blog/how-to-use-intel-ai-playground>

\*Intel AI Playground is supported on specific hardware configurations.  
\*Please check for compatibility on Intel® website.

Cubi NUC AI+ 3MG - Reliability



# RELIABILITY



Solid Performance, Sustainable Footprint.

# RELIABILITY

# Built for Sustainability



The Cubi NUC Series blends business-centric design with environmental responsibility - an embodiment of MSI's dedication to sustainability. By utilizing green material, ensures not only the products' durability but also commits to a greener world. Our commitment extends to incorporating sustainable materials in both our product design and packaging. It embodies sustainable value and heightened productivity.



To learn more about MSI's Sustainability Goals, please visit [HERE](#).

# Power Meter

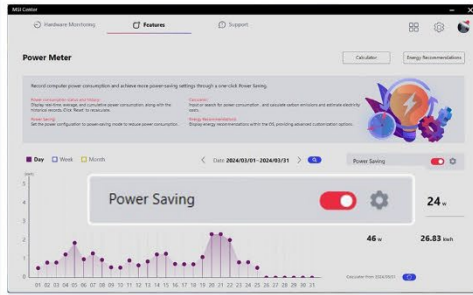


The Power Meter enables one-click power saving, carbon emission calculation & electricity cost estimation.



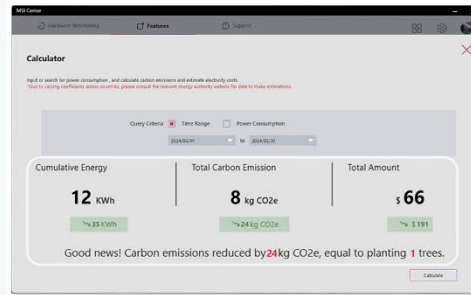
## One-click Power Saving

Record the computer power consumption and achieve more power-saving settings through a One-click Power Saving button.



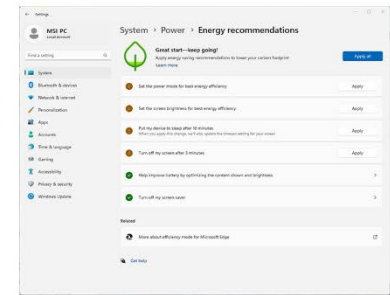
## Calculator

Users can gain insights into their carbon footprint and the environmental benefits, such as trees saved.



## Energy Recommendations

Collect settings that have an outsized impact on power consumption in one place, making it easy to reduce the power consumption.



To learn more about MSI Power Meter, please visit [HERE](#).

# Secure Inside and Out



MSI desktop PCs offer both virtual and physical protection with features like dual LAN for network redundancy, fTPM for data encryption, and Kensington lock support for added physical security

— Keeping your system safe online and offline.

## Fingerprint Security

Utilize the fingerprint power button to securely unlock and access Copilot+ PC's unique AI features.



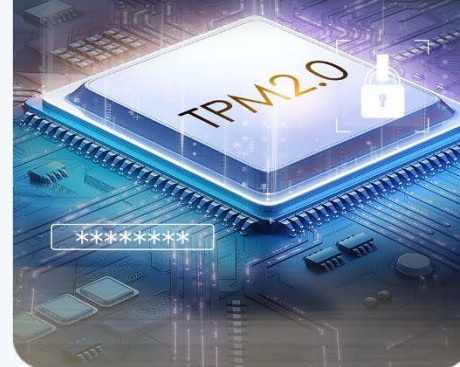
## Kensington Lock

Secure the unit with a Kensington lock design.



## dTPM Support

dTPM encrypts data and passwords for secure, hardware-based protection.



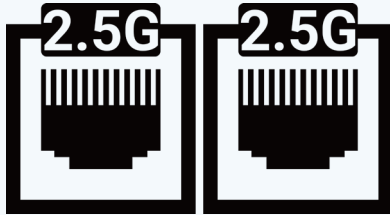
# Cable Organizer Design



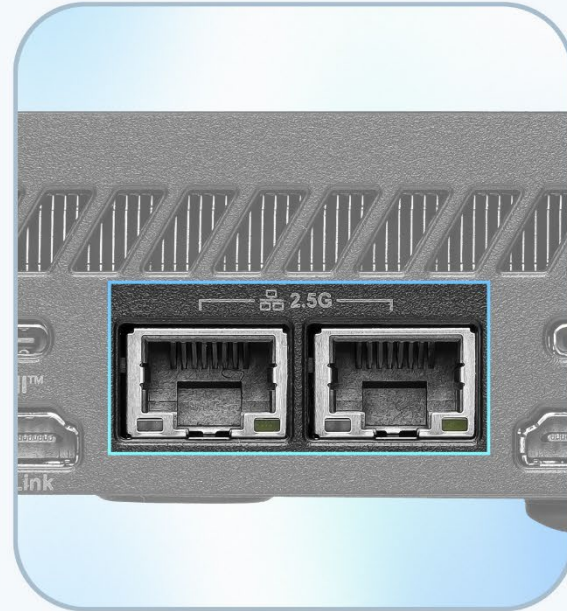
Cable Organizer keeps cables neat, secure, and protected. The built-in cable organizer prevents accidental disconnections and ensures stable connections even in tight or vibration-prone environments.

\*Find the optional cable organizer in the accessory box.

# Dual 2.5G LAN



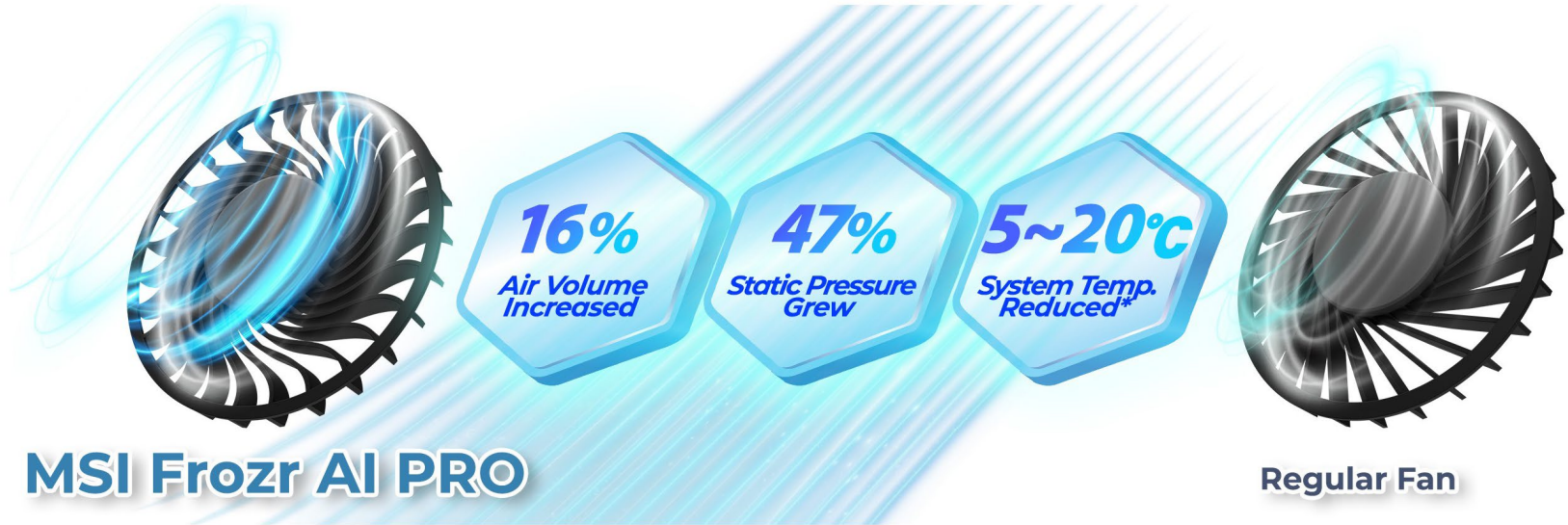
Experience the blazing speed of dual 2.5G LAN, which streamlines troubleshooting and enhances redundancy, network segmentation, security, and load balancing for users.



# MSI Frozr AI PRO



MSI Frozr AI PRO cooling design enhances airflow, increases static pressure, and effectively lowers system temperatures for improved cooling and performance inside your PC.



\*The actual specification will vary by model.

# 24 / 7 Qualified Reliability Test



Our relentless commitment to quality is reflected in our extensive reliability testing, which generates over 100,000 hours of MTBF (Mean Time Between Failures). We assure 24/7 reliability and availability, delivering an effortless user experience.

Quality is not just a buzzword for us, it's our top priority to deliver a hassle-free and high-quality product.

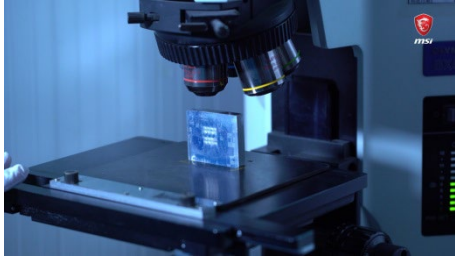


# Intensive Quality testing



msi

(1) PCBA test



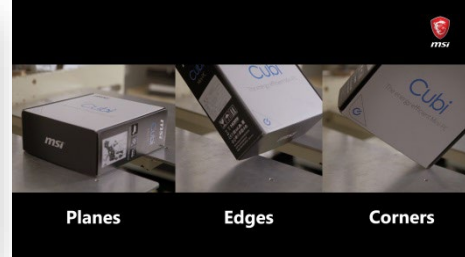
(2) Motherboard test



(3) Vibration test (X & Y Axis)



(4) Drop test



(5) Chamber test (Temp. & Humidity)



(6) Infrared (IR) test



(7) Acoustic test



(8) Signal test



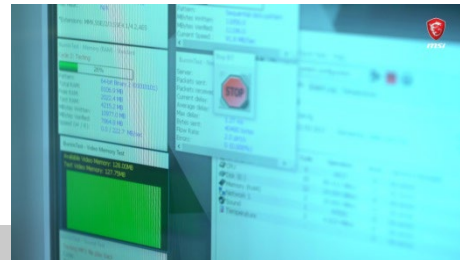
(9) I/O port life test



(10) Power test



(11) System performance test

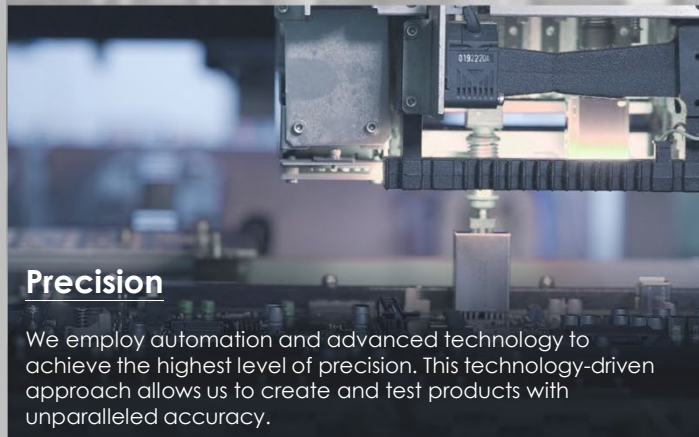


# Uncompromising Product Quality



## Performance Assurance

MIL-STD-1916 testing guarantees MSI products meet high-performance standards, providing reliable and professional experiences with desktop PCs at their best.



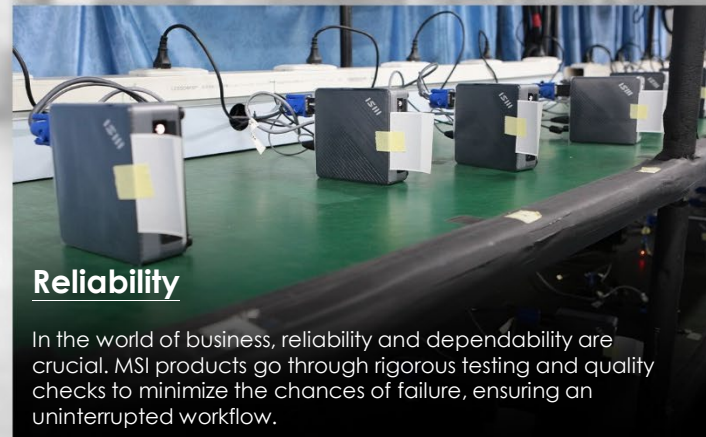
## Precision

We employ automation and advanced technology to achieve the highest level of precision. This technology-driven approach allows us to create and test products with unparalleled accuracy.



## Durability

MIL-STD-1916 testing ensures every component meets strict durability standards, making MSI products capable of lasting through extended gaming and work sessions while delivering reliable performance.



## Reliability

In the world of business, reliability and dependability are crucial. MSI products go through rigorous testing and quality checks to minimize the chances of failure, ensuring an uninterrupted workflow.

MSI products exemplify uncompromising quality.

Through strict adherence to the MIL-STD-1916 testing standard in our factory inspections, we consistently achieve excellence in performance, durability, precision, and reliability.

This commitment places MSI at the forefront, enabling us to consistently deliver outstanding designs to customers.

MSI modernized factory offering high-quality products Video:

<https://www.youtube.com/watch?v=ZvZ2GPn7CMc>

# MSI Support & Services



Comprehensive care solutions delivering trusted protection, expert support, and worldwide service access to ensure your MSI devices operate smoothly.



## MSI Care

Get comprehensive service and support for your MSI devices. Enjoy a free extended warranty, instant expert assistance, and more exclusive benefits. Visit [HERE](#).



## MSI Premium Care for Business

Access exclusive services designed to keep your MSI device in peak condition for maximum performance and long-lasting reliability. Visit [HERE](#).



## Service Location

Find an MSI service center near you for quick and convenient support. Visit [HERE](#).

## OPERABILITY



Smooth to Use, Intuitive by Design

# OPERABILITY



The toolless, easy-maintenance design enables quick component upgrades and routine servicing, saving time and streamlining upkeep.

## 3 Steps Tool-less



Tool-less Design



2x DDR5  
SO-DIMM Memory



M.2 2280  
SSD



# OPERABILITY

Convenience Meets Productivity



## VESA Mountable

With VESA mountable design, it can be mounted behind a monitor, on a wall, or in digital signage, freeing up desk space.



## External Power Switch

If the computer is in a hard-to-reach spot, using the optional external power switch\* is easier than bending down to turn it on.



## MSI Power Link

The Cubi NUC Series can be powered on/off using the power button on the MSI-selected monitor for a more convenient user experience.



# Cubi NUC AI+ 3MG – I/O Ports



VARIOUS

## Front:

- 1x USB 10Gbps Type C
- 1x USB 10Gbps Type A
- 1x USB 2.0 Type A
- 1x Power Button with Fingerprint



## Rear:

- 2x Thunderbolt 4
- 2x RJ45 (2.5G)
- 2x HDMI™ out (support 4K @60Hz as specified in HDMI™ 2.1/ One supports MSI Power Link)
- 1x DC Jack



## Side:

- 1x Kensington Lock
- 1x External Power Switch
- Pin Header



I/O PORTS

|                              |   |
|------------------------------|---|
| <b>Operating System</b>      | Windows 11 Home or Windows 11 Pro   |
| <b>CPU</b>                   | Intel® Core™ Ultra 9 Processor 386H<br>Intel® Core™ Ultra 7 Processor 355<br>Intel® Core™ Ultra 5 Processor 322   |
| <b>NPU TOPS</b>              | Up to 50 TOPS / Total up to 100 TOPS  |
| <b>Chipset</b>               | Intel® SoC  |
| <b>Memory</b>                | 2x DDR5 Slots, SO-DIMMs, up to 32GB   |
| <b>Graphics</b>              | Intel® Graphics (intergrated)   |
| <b>Storage</b>               | 1x M.2 2280 Slot (PCIe, factory pre-installed)  |
| <b>I/O (Front)</b>           | 1x USB 10Gbps Type C, 1x USB 10Gbps Type A, 1x USB 2.0 Type A, 1x Power Button with Fingerprint Security Design   |
| <b>I/O (Rear)</b>            | 2x Thunderbolt 4 (DP 1.4 alt-mode up to 4K@60Hz / PD-out 15W / One of TBT supports PD-in up to 98W), 2x RJ45 (2.5G), 2x HDMI™ out (support 4K @60Hz as specified in HDMI™ 2.1/ One supports MSI Power Link), 1x DC Jack |
| <b>I/O (Side)</b>            | 1x Kensington Lock Slot, 1x External Power Switch Pin Header  |
| <b>TPM</b>                   | dTPM 2.0 support  |
| <b>Kensington Lock</b>       | Yes   |
| <b>Wireless LAN</b>          | MTK RZ717 Wi-Fi 7   |
| <b>Bluetooth</b>             | 5.4 (for RZ717)   |
| <b>LAN</b>                   | 2x Intel® I226V (2.5G)  |
| <b>AC Adapter / PSU</b>      | 120W  |
| <b>Cooling System</b>        | Fan Cooler  |
| <b>Volume</b>                | 0.51 Liter (1.08 pint)  |
| <b>Dimension (WxDxH)</b>     | 119.60 x 115.20 x 37.50 mm (4.71 x 4.54 x 1.48 inch)  |
| <b>Weight (N.W./ G.W.)</b>   | 0.55 Kg (1.21 lbs) / 1.55 Kg (3.42 lbs)   |
| <b>VESA Mount</b>            | 75 x 75 mm and 100 x 100 mm   |
| <b>External Power Switch</b> | Optional  |
| <b>Accessories</b>           | 1x Quick guide, 1x Adaptor and Power cord   |

# Cubi NUC AI+ 3MG - Specification



reddot winner 2024



GOOD DESIGN  
AWARD 2025

# Cubi NUC AI+ 3MG vs Competitors



**MSI Cubi NUC AI+ 3MG**

**ASUS NUC 16 Pro**

**ASUS NUC 16 Pro**

**ASUS PN55**

**Spec**

**Default dTPM 2.0**  
**Power Button with Fingerprint**  
 2x DDR5 SO-DIMM (Intel Core Ultra 9/7/5)  
**Dual 2.5G LAN**  
**2x TBT 4**

**TPM Pin header**  
**No Fingerprint**  
 Dual LPDDR5 (Intel Core Ultra X7/X9)  
 Dual 2.5G LAN  
 2x TBT 4

**TPM Pin header**  
**No Fingerprint**  
 2x DDR5 CSO-DIMM (Intel Core Ultra 7/5)  
 Dual 2.5G LAN  
 2x TBT 4

**TPM Pin header**  
 Fingerprint separately located on Top  
 2x DDR5 SO-DIMM (AMD Ryzen AI 9/7/5)  
 Dual 2.5G LAN  
 1x USB 4

**Design**

**0.51-liter (37.5mm thin)**  
 119.6x115.2 x 37.5mm

**0.7-liter (42mm thin)**  
 144x117x42mm

**0.7-liter (42mm thin)**  
 144x117x42mm

**0.57-liter (34mm thin)**  
 130x130x34mm

**Features / Software**

- Tool-less
- Cable Organizer
- MSI Power Link

- Tool-less
- Cable security mechanism
- ASUS Power Sync

- Tool-less
- Cable security mechanism
- ASUS Power Sync

- Tool-less
- 1 x Mono-Speaker & Mic
- No Cable Organizer
- ASUS Power Sync

# B2B Projects



Over the past years, MSI has successfully supported countless of B2B projects, including government tenders, restaurant & hotel facilitation, shopping mall navigation projects, school & university developments and professional office projects.

Find more details about many of these projects on:  
<https://www.msi.com/Business>



40<sup>TH</sup>  
ANNIVERSARY



msi



Official Partner

AMG  
MOTORSPORT