



Cubi NUC TWG S

Infokit V1

CND Product Marketing | Mar-2026



INNOVATE BEYOND

Cubi NUC TWG S



Cubi NUC TWG S

Business & Productivity PC



Cubi NUC TWG S (with fanless design)

Cubi NUC

Productivity

Up to

Intel® Core™ Processor N Series



USB C | 2x HDMI

Built-in

6x USB Type A

1x USB Type C

Reliability



Fanless Design

Cubi NUC TWG S

Business & Productivity PC



Sustainability



Renewable Energy



Operability



MSI
Power Link



Optional External
Power Switch



Cable Organizer



VESA
Mountable

Mini. Sleek. Powerful.



0.55-liter, 40.1mm Thick



Power in the Palm of Your Hand



The Cubi NUC TWG S series offers a perfect balance of Mini and Power, featuring a 0.55-liter chassis.



0.55-Liter

135.6 x 112.6 x 40.1 mm
(5.34 x 4.43 x 1.58 inch)

Cubi NUC TWG S - Productivity



Work Smart. Achieve More.

Getting More Done With Less



Intel® Processor N-Series

The energy-efficient Intel N-series processor powering the Cubi NUC offers effective performance while using less power for demanding business tasks.

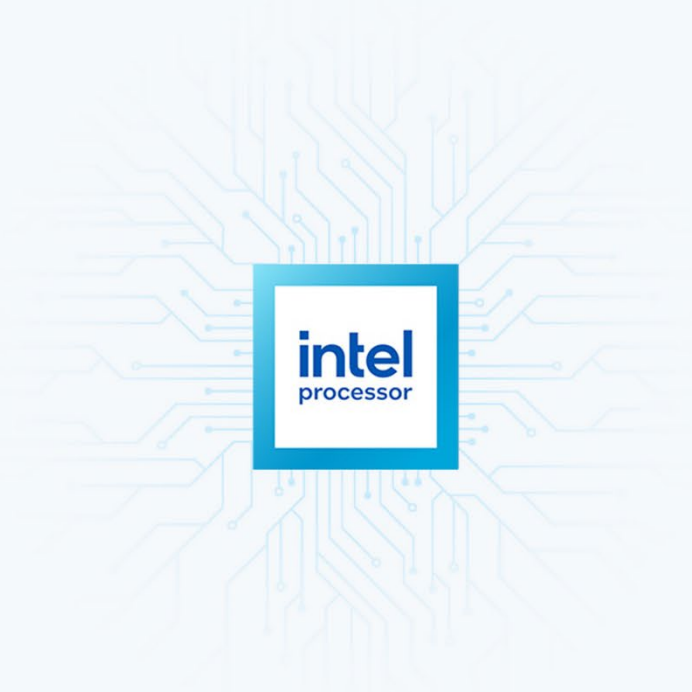
Support

Windows 11 Pro

*The actual specification will vary by model.

Support

DDR5 Memory



USB Type-C Display



Experience the convenience of a single USB-C cable for video, data transfer, and charging, all in one reversible connection.

PRODUCTIVITY



Wi-Fi 6E Support

Wi-Fi 6E delivers ultra-fast speeds and increased network capacity, which is essential for efficiently managing AI workloads.

DDR5 Memory

DDR5 memory can enhance work efficiency and quality, processing data and complex multitasking quickly and reducing waiting times and delays.

*The actual specification will vary by model.

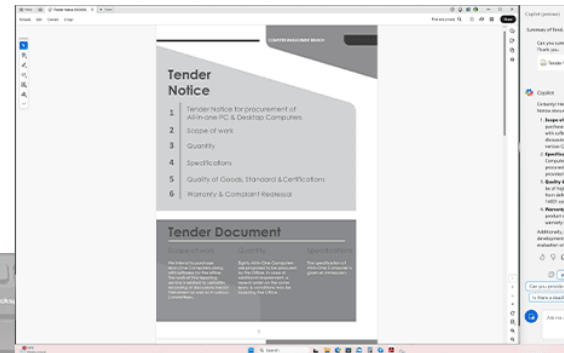
PRODUCTIVITY

PRODUCTIVITY



MSI with Microsoft Copilot

Work smarter, be more productive, boost creativity, and stay connected with Copilot—an AI companion adapts to your needs.



Copilot

Certainly! Here's a summary of the Tender Notice document:

- 1. Scope of Work:** The office intends to purchase All-in-One Computers along with software for verbatim recording of discussions held in Parliament and various Committees.
- 2. Specifications:** Eighty All-in-One Computers are proposed to be procured. The specification details are provided in Annexure-I.
- 3. Quality & Certifications:** Goods must be of high quality, unused, and free from defects. OEM certifications and ISO 14001 certification are required.
- 4. Warranty & Complaint Redressal:** The product should have a 3-year onsite warranty from the OEM.

Additionally, the document outlines website

Cubi NUC TWG S - Reliability



RELIABILITY

RELIABILITY



RELIABILITY

Solid Performance, Sustainable Footprint.

Built for Sustainability



The Cubi NUC Series blends business-centric design with environmental responsibility - an embodiment of MSI's dedication to sustainability. By utilizing green material, ensures not only the products' durability but also commits to a greener world. Our commitment extends to incorporating sustainable materials in both our product design and packaging. It embodies sustainable value and heightened productivity.



To learn more about MSI's Sustainability Goals, please visit [HERE](#).

Fanless Design – Cubi NUC TWG S



The fanless design of the **Cubi NUC TWG S** series allows for silent operation, lower energy consumption, and dust resistance, resulting in less downtime and a longer life cycle.

*The fanless design is limited to the **Cubi NUC TWG S** series.



Secure Inside and Out



MSI desktop PCs offer both virtual and physical protection with features like dual LAN for network redundancy, fTPM for data encryption, and Kensington lock support for added physical security — keeping your system safe online and offline.

Dual LAN: 2.5G & 1G

Connect and transfer data quickly over a high-bandwidth, low-latency LAN.



Kensington Lock

Secure the unit with a Kensington lock design.



fTPM Support

fTPM encrypts data and passwords for secure, hardware-based protection.



Cable Organizer Design



Cable Organizer keeps cables neat, secure, and protected. The built-in cable organizer prevents accidental disconnections and ensures stable connections even in tight or vibration-prone environments.

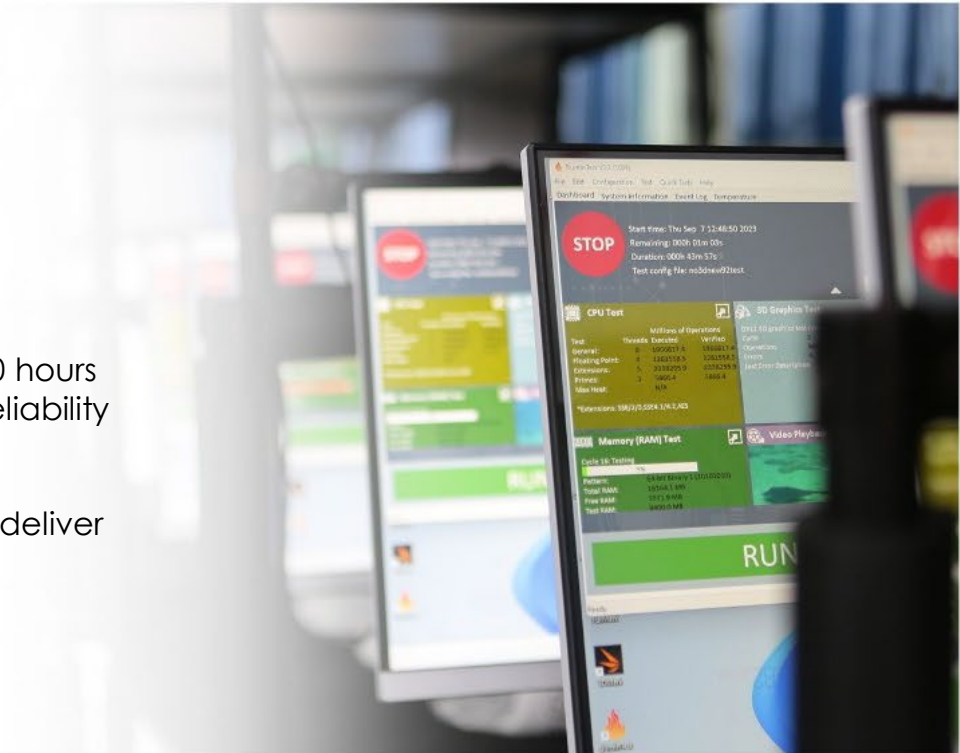
*Find the optional cable organizer in the accessory box.

24 / 7 Qualified Reliability Test



Our relentless commitment to quality is reflected in our extensive reliability testing, which generates over 100,000 hours of MTBF (Mean Time Between Failures). We assure 24/7 reliability and availability, delivering an effortless user experience.

Quality is not just a buzzword for us, it's our top priority to deliver a hassle-free and high-quality product.

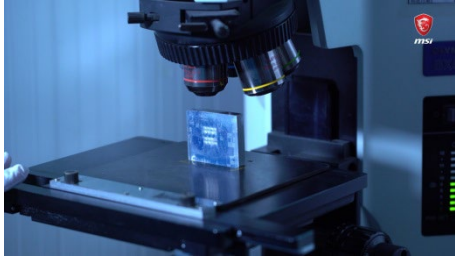


Intensive Quality testing



msi

(1) PCBA test



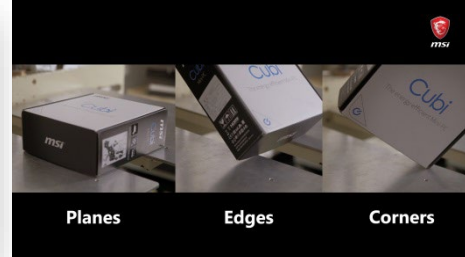
(2) Motherboard test



(3) Vibration test (X & Y Axis)



(4) Drop test



(5) Chamber test (Temp. & Humidity)



(6) Infrared (IR) test



(7) Acoustic test



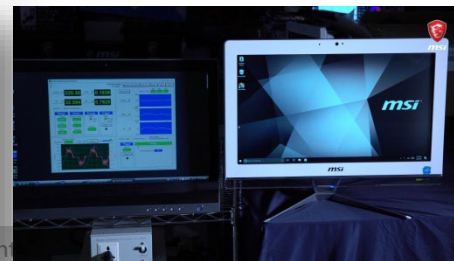
(8) Signal test



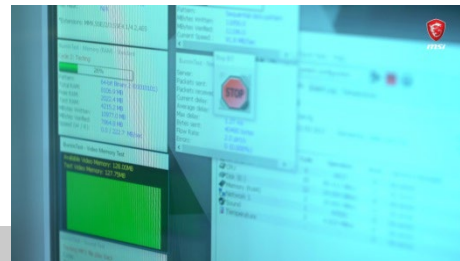
(9) I/O port life test



(10) Power test



(11) System performance test

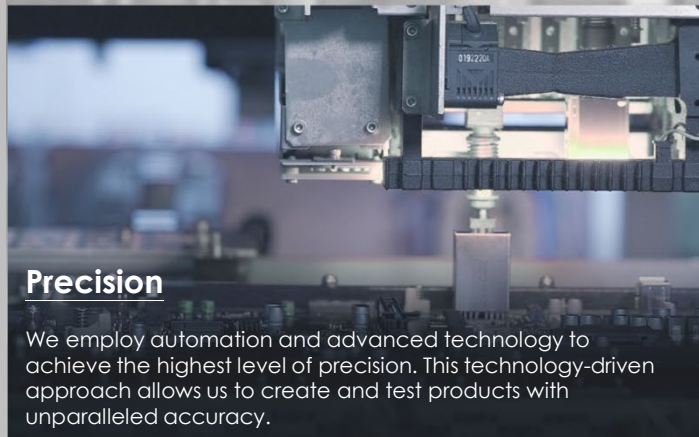


Uncompromising Product Quality



Performance Assurance

MIL-STD-1916 testing guarantees MSI products meet high-performance standards, providing reliable and professional experiences with desktop PCs at their best.



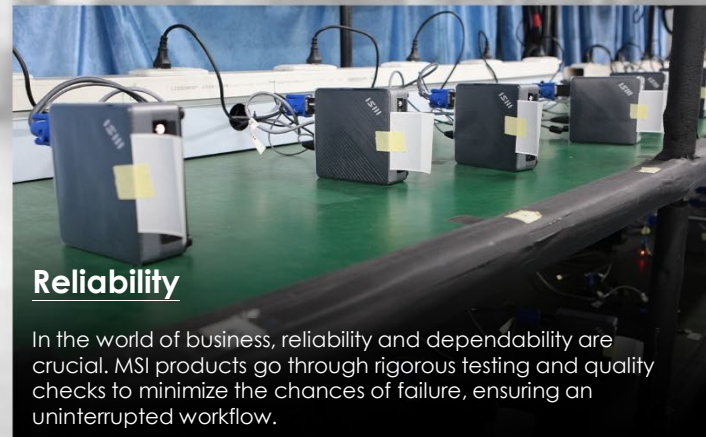
Precision

We employ automation and advanced technology to achieve the highest level of precision. This technology-driven approach allows us to create and test products with unparalleled accuracy.



Durability

MIL-STD-1916 testing ensures every component meets strict durability standards, making MSI products capable of lasting through extended gaming and work sessions while delivering reliable performance.



Reliability

In the world of business, reliability and dependability are crucial. MSI products go through rigorous testing and quality checks to minimize the chances of failure, ensuring an uninterrupted workflow.

MSI products exemplify uncompromising quality.

Through strict adherence to the MIL-STD-1916 testing standard in our factory inspections, we consistently achieve excellence in performance, durability, precision, and reliability.

This commitment places MSI at the forefront, enabling us to consistently deliver outstanding designs to customers.

MSI modernized factory offering high-quality products Video:

<https://www.youtube.com/watch?v=ZvZ2GPn7CMc>

MSI Support & Services



Comprehensive care solutions delivering trusted protection, expert support, and worldwide service access to ensure your MSI devices operate smoothly.



MSI Care

Get comprehensive service and support for your MSI devices. Enjoy a free extended warranty, instant expert assistance, and more exclusive benefits. Visit [HERE](#).



MSI Premium Care for Business

Access exclusive services designed to keep your MSI device in peak condition for maximum performance and long-lasting reliability. Visit [HERE](#).



Service Location

Find an MSI service center near you for quick and convenient support. Visit [HERE](#).

OPERABILITY



Smooth to Use, Intuitive by Design

OPERABILITY

Convenience Meets Productivity



VESA Mountable

With VESA mountable design, it can be mounted behind a monitor, on a wall, or in digital signage, freeing up desk space.



External Power Switch

If the computer is in a hard-to-reach spot, using the optional external power switch* is easier than bending down to turn it on.

*The actual specification will vary by model.



MSI Power Link

The Cubi NUC Series can be powered on/off using the power button on the MSI-selected monitor for a more convenient user experience.



*To learn more about MSI Power Link, please visit [HERE](#).

Cubi NUC TWG S – I/O Ports



VARIOUS

Front:

- 2x USB 10Gbps Type A
- 2x USB 2.0 Type A
- 1x Mic-in / Headphone-out combo



Side:

- 1x Kensington Lock
- 1x External Power Switch Pin Header



Rear:

- 1x USB 10Gbps Type C (DP 1.4 Alt. mode)
- 2x USB 2.0 Type A
- 2x RJ45 (2.5G & 1G LAN)
- 2x HDMI™ out (support 4K @60Hz as specified in HDMI™ 2.1 / One supports MSI Power Link)
- 1x DC Jack



I/O PORTS



Cubi NUC TWG S - Specification



Operating System	Windows 11 Home or Windows 11 Pro
CPU	Intel® processor N250 (6M Cache, up to 3.8 GHz) Intel® processor N150 (6M Cache, up to 3.6 GHz)
Chipset	Intel® SoC
Memory	1x DDR5 Slots, SO-DIMMs, up to 16GB
Graphics	Intel® Graphics (intergrated)
Storage	1x M.2 Slot, 2280 Gen3 x4 (PCIe, factory pre-installed)
I/O (Front)	2x USB 10Gbps Type A, 2x USB 2.0 Type A, 1x Mic-in / Headphone-out combo
I/O (Rear)	1x USB 10Gbps Type C (DP 1.4 Alt. mode), 2x USB 2.0 Type A 2x RJ45 (2.5G & 1G LAN) 2x HDMI™ out (support 4K @60Hz as specified in HDMI™ 2.1/ One supports MSI Power Link) 1x DC Jack
I/O (Side)	1x Kensington Lock Slot 1x External Power Switch Pin Header
TPM	fTPM
Kensington Lock	Yes
Wireless LAN	Intel WiFi 6E AX211 / AzureWave AW-CB515NF Wi-Fi 5
Bluetooth	5.3 (for AX211) / 5.0 (for AW-CB515NF)
LAN	1x Realtek® RTL8111H (1G), 1x Realtek® RTL8125D (2.5G)
AC Adapter / PSU	65W Adaptor
Cooling System	Fanless Cooler
Volume	0.55-Liter (1.16 Pint)
Dimension (WxDxH)	135.6mm x 112.6mm x 40.1mm (5.34" x 4.43" x 1.58" inch)
Weight (N.W./ G.W.)	0.54 Kg (1.19 lbs) / 1.29 Kg (2.84 lbs)
VESA Mount	75 x 75 mm and 100 x 100 mm
External Power Switch	Optional
Accessories	1x Quick guide, 1x Adaptor and Power cord

B2B Projects



Over the past years, MSI has successfully supported countless of B2B projects, including government tenders, restaurant & hotel facilitation, shopping mall navigation projects, school & university developments and professional office projects.

Find more details about many of these projects on:
<https://www.msi.com/Business>



40TH
ANNIVERSARY



msi



Official Partner

AMG
MOTORSPORT