

20 GE PoE-Plus + 4 GE PoE-Plus Combo SFP + 4 10GE SFP-Plus L2-Plus Managed Switch, 185W



GTP-2880

H/W Version: 1

LevelOne GTP-2880 is a Layer 2-Plus Managed switch, provides 24 x 1000Base-T ports associated with 4 x SFP (Small Form Factor Pluggable) and 4 x 10 Gigabit SFP Plus slots. This switch is IEEE802.3af/at compliant, and provides power and data over a single Ethernet cable to any PoE device, with a total power budget of 185W, up to 30W per port. Despite its affordable pricing, the GTP-2880 is equipped with advanced features such as Single IP Management which allows users to manage up to 32 switches under the same web interface, Easy Configuration Port (ECP), IPv6, IEEE 802.1D/w/s Spanning Tree, IEEE 802.1X Access Control, IEEE 802.3az Green Ethernet and more. An ideal network solution for workgroups and edge deployments, or anyone looking for an affordable and efficient way to expand their network.

IP Clustered Stacking Solution

With the design and implementation of SIP (Single IP Management), network administrators are allowed to virtually stack GEL-1072, GTL-2880, GTP-2880, and GTL-5280 together and manage them as one logical unit through a single IP address regardless of geographical locations of those switches. Comparing to traditional stacking, IP clustering eliminates the use of costly cables and connectors. Furthermore, it minimizes the impact of any single point of failure.

LevelOne Easy Configuration Port (ECP) Technology

Each switch port can now be fully optimized through a predefined role and settings which are based on the type of a device such as an IP camera or a VoIP phone

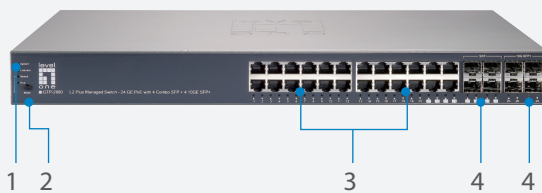
to be connected to. For instance, even if a surveillance system integrator who lacks of IT administration skills, can still easily enables the role and applies settings like VLAN, QoS, port security and spanning tree to all connected IP cameras on a single Web UI within a few minutes. Hence, simplifying network deployment and ensuring consistent configurations across the network.

Enhanced Security Measures

We are always committed to providing the highest level of protection for your network resources against intrusion attacks and unauthorized access. Delivering robust access control, each Access Control List (ACL) consists of up to 512 entries, allowing you to configure a fine-grained restriction policy based on frame type, TCP/UDP ports, MAC address and VLAN ID in order to get deep inspection on your network traffic. In addition, with the implementation of port-based authentication (IEEE 802.1X), messages can be encrypted, therefore preventing intruders from getting authentication credentials.

Cost Effectiveness and Enhanced Flexibility

Featuring Power over Ethernet Plus (PoE+) technology (IEEE 802.3at), which nearly doubles the power delivery comparing to the IEEE 802.3af PoE technology. Furthermore, it ensures that the power is used more efficiently due to the maximum power will only be requested when it is needed. Thus providing great cost savings by reducing power bills and eliminating the need for additional power cables and outlets.



1. LED Indicators
2. Mode Button
3. 10/100/1000Mbps RJ-45 LAN Ports
4. SFP (Mini-GBIC) Slot



5. RS-232 Port
6. Power Socket

Technical Specification

Standard Compliance

IEEE 802.3 10-BASE-T (Ethernet)
 IEEE 802.3u 100-BASE-TX (Fast Ethernet)
 IEEE 802.3ab 1000BASE-T (Gigabit Ethernet)
 IEEE 802.1D MAC Bridges
 IEEE802.1p priority tags
 IEEE802.1Q VLAN
 IEEE802.3ac VLAN tagging
 IEEE802.3ad Link aggregation control protocol
 IEEE802.1w Fast Spanning Tree
 IEEE802.1X authentication
 IEEE 802.3af Power over Ethernet
 IEEE 802.3at Power over Ethernet Plus
 IEEE802.3az Energy Efficient Ethernet

Performance

Switching Capacity:

- 128 Gbps switching fabric with up to 95 Mbps forwarding rates
- 8K MAC addresses entries with auto-learning function
- Supports Jumbo frame, up to 9.8K
- Prevents traffic on a LAN from being disrupted by a broadcast, multicast, or unicast storm on a port
- Port Mirroring

Network Interface

- 20 x RJ-45 10/100/1000BASE-T PoE-Plus ports
- 4x Gigabit RJ-45/SFP (Mini-GBIC) shared slots
- 4x 10G Gigabit SFP Plus slots

Software

Layer 2 feature

- Spanning Tree Protocol:
- IEEE 802.1D Spanning Tree Protocol (STP)
 - IEEE 802.1w Rapid Spanning Tree Protocol (RSTP)
 - IEEE 802.1s Multiple Spanning Tree Protocol (MSTP)
- Trunking:
- IEEE 802.3ad Link Aggregation Control Protocol (LACP)
 - Trunk groups: 24, up to 12 ports per group
- VLAN:
- Support up to 4K VLANS simultaneously (1~4094 VLAN IDs)
 - IEEE 802.1q tag-base VLAN
 - protocol-based VLAN
 - MAC-based VLAN
 - Management VLAN
 - GVRP Supported
- DHCP Relay (Layer 2):
- Relay of DHCP traffic to DHCP server in different VLAN
- IGMP Snooping:
- IGMP v1/v2/v3 snooping
 - IGMP Queried
 - IGMP Proxy

Security

- SSH v1/v2 supported
- HTTPS/SSL
- IEEE 802.1X
- Dynamic VLAN assignment
- PVE: L2 isolation between clients in the same VLAN
- Port based/MAC based/ IP address based security
- Radius/Tacacs+ authentication supports
- Storm control: Prevents traffic on a LAN from being disrupted by a broadcast, multicast, or unicast storm on a port
- ACLs: Support for up to 512 entries

QoS

Priority Queues: 8 hardware queues per port
 Traffic classification based on IEEE 802.1p CoS, IP Precedence, DSCP,
 Supports Layer 4 TCP/UDP port and ToS classification
 Rate Limiting: Ingress policer; egress shaping and rate control

Management

Switch Management:
 CLI via console port or Telnet
 Web management
 SNMP v1, v2c, v3 User-based Security Model (USM)
 Firmware & Configuration:
 Dual firmware images
 Firmware upgrade via web browser (HTTP/HTTPS) and TFTP server, or console port.
 RMON (groups 1, 2, 3 and 9)
 Easy Configuration Port (ECP) can configure client's QoS and security capabilities.
 Single IP management (SIP):
 Single IP management for a virtual stack function of up to 32 switches of GTL-2880/GTL-5280/GTP-2880/GTL-1072
 UPnP
 s-Flow
 Event / Error Log / Syslog
 LLDP
 IPv6 feature:

- IPv6 host mode
- IPv6 stateless address auto-configuration
- Duplicate address detection (DAD)
- ICMP version6
- IPv6 QoS Prioritize IPv6 packets in hardware

Green Ethernet

IEEE 802.3az Energy Efficient function:
 Automatically turns off Ethernet port when detecting link down or Idle of client
 Cable length detection:
 - Adjusts the signal strength based on the cable length
 - Reduces the power consumption for cables shorter

Hardware

LED Indication

System LED, Link/Act, Speed, PoE, Gigabit Port activity LED and SFP/SFP+ Module LED

Dimension

442mm (W) x 385mm (D) x 44mm (H)

Weight

5.0Kg

Power Supply

100-240 VAC 50~60 Hz, internal, universal

PoE Power Consumption

185 Watts (max)

Temperature

Operating: 0°C ~ 40°C

Storage: -20°C ~ 70°C

Humidity

Operating: 10% ~ 90% (Non-condensing)

Certifications

CE, FCC

Key Features

- 24 PoE Gigabit Ethernet ports with 4 shared SFP slots and 4 10 Gigabit SFP plus slots
- IEEE 802.3at PoE Plus compliant to simplify deployment and installation
- Single IP management supports up to 32 switches (GTL-2880/GTL-5280/GTL-1072/GTP-2880)
- Easy Configuration Port (ECP) for easy deployment of network devices such as IP phone or network camera
- Managed and deployed at IPv6 network operation
- IEEE 802.1X port-based authentication with Access Control List (ACL) of up to 512 entries for easy network security
- IEEE 802.1s Multiple Spanning Tree Protocol (MSTP) and port mirroring
- Minimize carbon footprint with advanced Energy Efficient Technology (IEEE 802.3az)
- IEEE 802.1Q VLAN allows network segmentation to enhance performance and security
- IEEE 802.3ad LACP for auto port aggregation of up to 24 groups, 12 ports per group
- Supports Dual Firmware Image which protects against failed firmware upgrade
- Provides QoS control based on ToS/DSCP for advanced traffic prioritization and bandwidth management
- Total PoE power budget: 185W, up to 30W per port
- DDMI SFP transceiver supported

Related Product



GTL-5280

L2 Plus Managed Switch - 48 GE with 4 Combo SFP + 4 10GE SFP Plus



GTL-2880

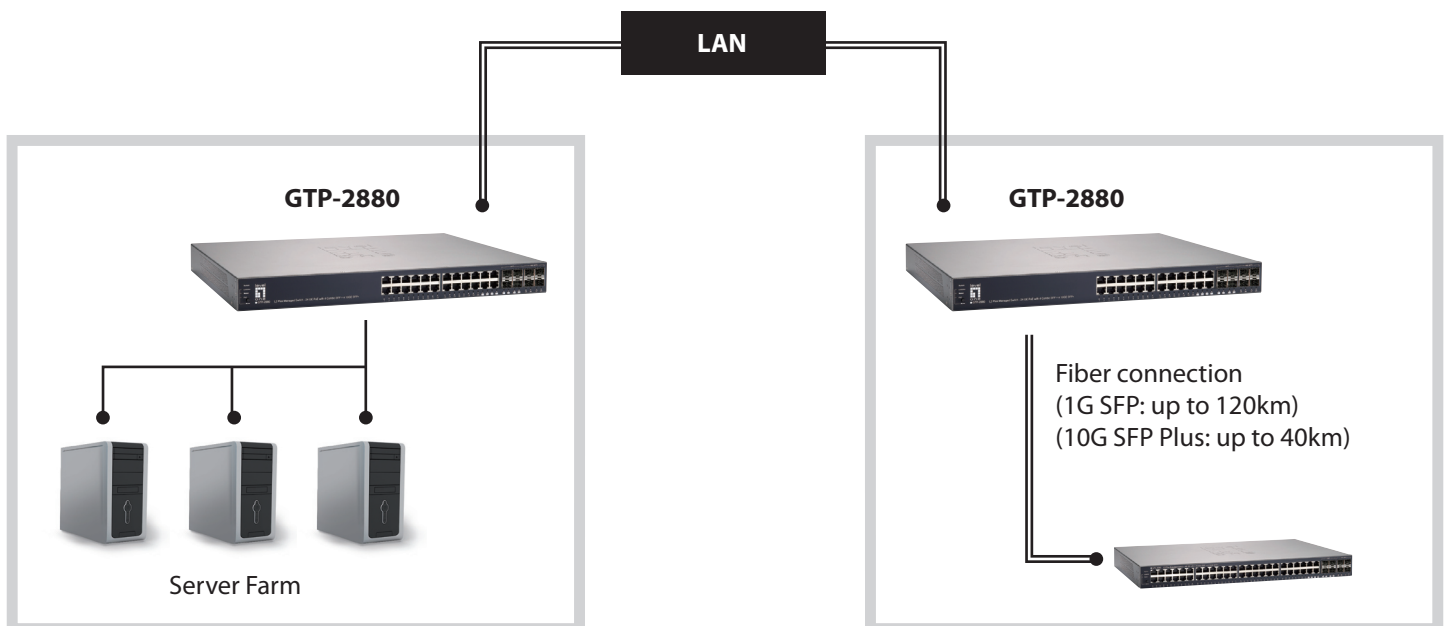
L2 Plus Managed Switch - 24 GE with 4 Combo SFP + 4 10GE SFP Plus

Product Diagram

— Ethernet Cable (RJ-45)

══ Fiber

Virtual stack (SIP) with
GTL-5280, GTL-2880, GTP-2880, GEL-1072



Order Information

GTP-2880: 20 GE PoE-Plus + 4 GE PoE-Plus Combo SFP +
4 10GE SFP-Plus L2-Plus Managed Switch, 185W

Package Contents

Power Cord
Console Cable
19" Rackmount Kit
Quick Installation Guide
CD - User Manual

Optional Accessories

GVT-0300
1.25Gbps SFP Transceiver,
Duplex LC connector (550m)



GVT-0301
1.25Gbps SFP Transceiver,
Duplex LC connector (10km)



GVT-0302
1.25Gbps SFP Transceiver,
Duplex LC connector (80km)



SFP-3001
1.25Gbps SFP Transceiver,
Duplex LC connector (550m)



SFP-3211
1.25Gbps SFP Transceiver,
Duplex LC connector (10km)



SFP-3611
1.25Gbps SFP Transceiver,
Duplex LC connector (80km)



SFP-3111
1.25Gbps SFP Transceiver,
Duplex LC connector, MLX
(2km)



SFP-3411
1.25Gbps SFP Transceiver, SM,
EZX, Duplex LC connector
(120km)



SFP-3711
1.25Gbps SFP Transceiver, SM,
EZX, Duplex LC connector
(120km)



SFP-9221
1.25Gbps Bi-Di SFP
Transceiver, SM, Simplex LC
connector (10km)



SFP-9231
1.25Gbps Bi-Di SFP
Transceiver, SM, Simplex LC
connector (10km)



SFP-9321
1.25Gbps Bi-Di SFP
Transceiver, SM, Simplex LC
connector (20km)



SFP-9331
1.25Gbps Bi-Di SFP
Transceiver, SM, Simplex LC
connector (20km)



SFP-9421
1.25Gbps Bi-Di SFP
Transceiver, SM, Simplex LC
connector (40km)



SFP-9431
1.25Gbps Bi-Di SFP
Transceiver, SM, Simplex LC
connector (40km)



SFP-6101
10Gbps Multi-mode SFP Plus
Transceiver (300m)



SFP-6121
10Gbps Single-mode SFP Plus
Transceiver (10km)



SFP-6141
10Gbps Single-mode SFP
Plus Transceiver (40km)