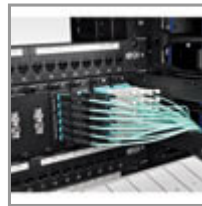


Important Note

OM3 can support 40GBASE-SR4 / 100GBASE-SR10 in applicable parallel optics networks.

MTP/MPO Patch Cable with Push/Pull Tabs, 12 Fiber, 40GbE, 40GBASE-SR4, OM3 Plenum-Rated - Aqua, 2M (6 ft.)

MODEL NUMBER: **N844-02M-12-P**



Highlights

- Hi-density MTP/MPO 12-fiber connectors for reduced cabling
- Push/Pull tab connectors offer maximum accessibility in high density installations; install / remove with one hand
- OM3 rated 50/125 Multimode
- Supports to 40GbE speeds

Package Includes

- 2 Meter MTP / MPO Patch Cable, 12 Fiber, 40GbE Aqua OM3 Plenum

Features

- MTP / MPO Push-Pull Connectors for Quick Fiber Optic connections
- Push/Pull tab connectors offer maximum accessibility in high density installations; install / remove with one hand
- 12 times the density of SC style connectors
- High Density design cuts down on installation costs
- 50/125 OM3 Rated Multimode Fiber, 850nm
- Plenum rated jacket
- Unique cable ID label for Quality Control and Traceability
- Each cable 100% tested for low insertion loss and back reflection
- Test data supplied with each cable
- Custom lengths available

Specifications

OVERVIEW	
UPC Code	037332173720
Technology	Multimode
Optical Mode	OM3

PHYSICAL	
Cable Jacket Color	Aqua
Connector Color	Aqua; Black
Cable Jacket Material	PVC
Cable Jacket Rating	OFNP
Clad Diameter (microns)	125
Core Diameter (microns)	50
Number of Fibers	12
Cable Length (ft.)	6.6
Cable Length (m)	2.01
Cable Length (in.)	78.7
Minimum Bend Radius	20 mm (Dynamic); 10 mm (Static)
Shipping Dimensions (hwd / in.)	7.00 x 9.00 x 0.50
Shipping Dimensions (hwd / cm)	17.78 x 22.86 x 1.27
Shipping Weight (lbs.)	0.06
Shipping Weight (kg)	0.03
Fiber Cable Length	2M (6.6 ft)
ENVIRONMENTAL	
Operating Temperature Range	-4° to 140°F (-20° to 60°C)
Storage Temperature Range	-4° to 140°F (-20° to 60°C)
Operating Humidity Range	5% to 85% RH, Non-Condensing
Storage Humidity Range	35% to 65% RH, Non-Condensing
COMMUNICATIONS	
Network Compatibility	40 Gbps; 100 Gbps; 400 Gbps
Attenuation @ 850NM	3.0 dB/km
Insertion Loss	0.35 dB
CONNECTIONS	
Side A - Connector 1	12-STRAND MTP/MPO (FEMALE)
Side B - Connector 1	12-STRAND MTP/MPO (FEMALE)
Endface Polish	PC
Polarity	Type B (cross)
FEATURES & SPECIFICATIONS	

TRIPP-LITE

by **EATON**

1000 Eaton Boulevard
Cleveland, OH 44122
United States

Push/Pull Tabs	Yes
Breakout	No
Trunk	No
STANDARDS & COMPLIANCE	
Product Compliance	RoHS; REACH
WARRANTY & SUPPORT	
Product Warranty Period (Worldwide)	Lifetime limited warranty

TRIPP-LITE

by **EATON**

© 2023 Eaton. All Rights Reserved.
Eaton is a registered trademark. All other trademarks
are the property of their respective owners.