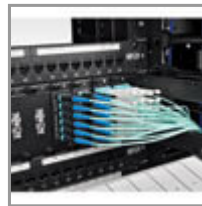


Important Note

OM3 can support 40GBASE-SR4 / 100GBASE-SR10 in applicable parallel optics networks.

100G MTP/MPO Multimode OM3 Plenum-Rated Fiber Optic Cable (CXP), 24 Fiber, 100GBASE-SR10, Push/Pull Tabs, Aqua, 2 m

MODEL NUMBER: N846-02M-24-P



Highlights

- Hi-density MTP/MPO 24-fiber connectors for reduced cabling
- Push/Pull tab connectors offer maximum accessibility in high density installations; install / remove with one hand
- OM3 rated 50/125 Multimode
- Supports to 100GbE speeds

Package Includes

- 2 Meter MTP / MPO Patch Cable, 24 Fiber, 100GbE Aqua OM3 Plenum

Description

MTP/MPO to MTP/MPO fiber Ethernet cables allow high-density connections between network equipment in telecommunication rooms. They feature push/pull tab connectors that offer maximum accessibility in high-density installations and install/remove with one hand. The MTP/MPO connector is approximately the same size of a SC connector, but accommodates 24 fibers and provides up to 24 times the density, thereby offering savings in circuit card and rack space. N846-Series cables are manufactured using laser-optimized, 50/125, OM3 multimode cable, and support speeds up to 100 GbE.

Features

- MTP / MPO Push-Pull Connectors for Quick Fiber Optic connections
- Push/Pull tab connectors offer maximum accessibility in high density installations; install / remove with one hand
- 24 times the density of SC style connectors
- No need for long fan-out cables or individual long duplex cable runs
- High Density design cuts down on installation costs
- 50/125 OM3 Rated Multimode Fiber, 850nm
- Plenum rated jacket
- Unique cable ID label for Quality Control and Traceability
- Each cable 100% tested for low insertion loss and back reflection
- Test data supplied with each cable
- Custom lengths available

Specifications

OVERVIEW	
UPC Code	037332173805
Technology	Multimode
Optical Mode	OM3
PHYSICAL	
Cable Jacket Color	Aqua
Connector Color	Aqua; Black; Blue
Cable Jacket Material	PVC
Cable Jacket Rating	OFNP
Clad Diameter (microns)	125
Core Diameter (microns)	50
Number of Fibers	24
Cable Length (ft.)	6.6
Cable Length (m)	2.01
Cable Length (in.)	78.7
Minimum Bend Radius	20 mm (Dynamic); 10 mm (Static)
Shipping Dimensions (hwd / in.)	9.00 x 7.00 x 0.50
Shipping Dimensions (hwd / cm)	22.86 x 17.78 x 1.27
Shipping Weight (lbs.)	0.07
Shipping Weight (kg)	0.03
Fiber Cable Length	2M (6.6 ft)
ENVIRONMENTAL	
Operating Temperature Range	-4° to 140°F (-20° to 60°C)
Storage Temperature Range	-4° to 140°F (-20° to 60°C)
Operating Humidity Range	5% to 85% RH, Non-Condensing
Storage Humidity Range	35% to 65% RH, Non-Condensing
COMMUNICATIONS	
Network Compatibility	100 Gbps; 400 Gbps
Attenuation @ 850NM	3.0 dB/km
Insertion Loss	0.35 dB
CONNECTIONS	
Side A - Connector 1	24-STRAND MTP/MPO (FEMALE)
Side B - Connector 1	24-STRAND MTP/MPO (FEMALE)



Powering Business Worldwide



Endface Polish	PC
Polarity	Type A (straight through)
FEATURES & SPECIFICATIONS	
Push/Pull Tabs	Yes
Breakout	No
Trunk	No
STANDARDS & COMPLIANCE	
Product Compliance	RoHS; REACH
WARRANTY & SUPPORT	
Product Warranty Period (Worldwide)	Lifetime limited warranty

1000 Eaton Boulevard
Cleveland, OH 44122
United States
<https://tripplite.eaton.com>

© 2024 Eaton. All Rights Reserved.
Eaton is a registered trademark. All other trademarks
are the property of their respective owners.