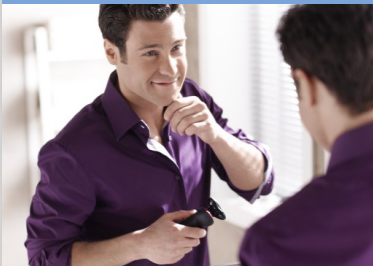


# PHILIPS

Shaver series 7000  
SensioTouch

wet & dry electric  
shaver

DualPrecision & GyroFlex2D  
40 min cordless use/1h charge



RQ1141/16



## Soft touch, smooth skin

The Philips SHAVER series 7000 gives a soft touch for a smooth shave. The GyroFlex 2D system adjusts easily to the curves of your face and shaves even the shortest stubble with its DualPrecision blades.

### A close, comfortable shave

- Cutting slots & holes catch even the shortest hairs
- 2-way flexing heads adjust easily to the curve
- Super Lift and Cut blades raise hairs to cut closer

### Skin friendly

- Aquatec seal for a comfortable dry & a refreshing wet shave
- Smooth, low-friction SkinGlide to minimise irritation

### Easy to use

- 2 level battery indicator with travel lock
- Simply rinses clean
- 40 shaving minutes, 1 hour charge
- Charging stand keeps your shaver fully charged and ready
- 2-year guarantee, worldwide voltage and replaceable blades



asimpleswitch.com

# Highlights

## Dual Precision blades



DualPrecision blades comfortably shave both long hairs and short stubble. 1. Slots cut long hairs. 2. Holes cut stubble

## Super Lift and Cut



The dual blade system built into the Philips electric shaver lifts hairs to cut comfortably below skin level for a closer shave.

## GyroFlex 2D



GyroFlex 2D contour-following system of the shaver adjusts easily to the curves of your face, minimizing pressure and irritation for a close shave.

## Aquatec Wet and Dry



The Aquatec wet & dry seal of the electric shaver lets you choose how you prefer to shave. You can get a comfortable dry shave or a refreshing wet shave using a shaving gel or foam for extra skin comfort.

## Fully washable shaver



Simply pop the heads open, and rinse thoroughly under the tap.

## SkinGlide



The low-friction SkinGlide shaving surface of the electric shaver slides smoothly along your skin for a close easy shave.

## Cordless use - 40 mins

An energy-efficient, powerful lithium-ion battery gives you more shaves per charge. Charge it for an hour and you'll have up to 40 minutes of shaving time. Charge it for 3 minutes and you'll have enough power for one shave.

## 2 level battery indicator

The multi-level LED display shows when the battery is low, when you need a new head and when the travel lock is on. Travel lock prevents the product from turning on by accident. Press any button for 3 seconds to activate the travel lock, so the product doesn't get turned on accidentally. A red lock symbol shows when the travel lock is on.

## Charging stand

The foldable charging stand is designed to fit into even the smallest spaces, so you can charge it wherever you want and easily take it with you when you travel.

## Built to last



All of our shavers come with a 2-year worldwide guarantee and can adapt to any voltage. The long-lasting blades only need to be replaced after 2 years.



[asimpleswitch.com](https://www.asimpleswitch.com)

## Philips Green Logo

Philips Green Products can reduce costs, energy consumption and CO2 emissions. How? They offer a significant environmental improvement in one or more of the Philips Green Focal Areas – Energy efficiency, Packaging, Hazardous substances, Weight, Recycling and disposal and Lifetime reliability.

# Specifications

## Shaving Performance

**Contour-following:** GyroFlex 2D contour following

**Shaving system:** DualPrecision System, Super Lift & Cut technology

**Skin comfort:** SkinGlide

## Ease of use

**Charging:** 1 hour, Rechargeable, Quick charge 3 min for 1 shave

**Shaving time:** Up to 40 minutes

**Display:** 2 level battery indicator, Battery full

indicator, Battery low indicator, Charge indicator, Quick charge indication

**Cleaning:** Washable

## Design

**Finishing:** Brushed chrome deco ring

## Accessories

**Maintenance:** Cleaning brush, Protective cap

**Stand:** Foldable charging stand

## Power

**Battery Type:** Li-ion

**Automatic voltage:** 100-240 V

## Service

**2-year guarantee**

**Replacement head:** Replace every 2 yrs with RQ11

