

INSTRUCTIONS FOR USE

APPLIANCE DIAGRAM (Fig. 1)

- A. Handle.
- B. Safety closure (if provided).
- C. Seal.
- D. Separator (if provided).
- E. Defrost water drain plug.
- F. Control panel.
- G. Side motor ventilation grille.

CONTROL PANEL DIAGRAM (Fig. 2)

1. **Red light:** when blinking, it indicates an alarm condition (see the section "TROUBLESHOOTING GUIDE").
2. **Blue light:** when on, it indicates that the STOP FROST function is activated (see the section "STOP FROST FUNCTION").
3. **Green lights:** they indicate that the product is working, the set temperature and possible activation of the quick freeze function ("Shopping").
4. **Setting button:** for updating the set temperature, activation/deactivation of the quick freeze function ("Shopping") and activation/deactivation of the "STOP FROST" function.

BEFORE USING THE APPLIANCE

Your new appliance is designed to be used in the household and similar applications such as:

- kitchen areas in shops, offices and other working environments
- farm houses
- by clients in hotels, motels, residences, bed & breakfasts.

The product must only be used to store frozen food, to freeze fresh food and to make ice.

Regulations require the appliance to be earthed. The manufacturer declines all liability for injury to persons or animals and for damage to property resulting from failure to observe the above procedures and reminders.

1. After unpacking, make sure that the appliance is undamaged and that the door closes perfectly, with the gasket remaining intact. Any damage must be reported to your retailer within 24 hours after delivery of the appliance.
2. Wait at least two hours before switching the appliance on in order to ensure the refrigerant circuit is fully efficient.
3. Installation and electrical connection must be carried out by a qualified technician, according to the manufacturer's instructions and local safety regulations.
4. Clean the inside of the appliance before using it.
 - Before connecting the appliance to the mains supply, ensure that the voltage corresponds to that given on the rating plate located on the rear of the appliance.
 - **Electrical connections must be made in accordance with local regulations.**

INSTALLATION

- **Unpack the product.**
- **Remove the 4 spacers inserted between the lid and the product. (Fig. 3)**
- Make sure the defrost water drain plug (if provided) is correctly positioned (E).
- For optimum operation and to avoid damage when the lid is opened, maintain a distance of at least 7 cm from the front wall and 7 cm at the sides. (Fig. 4)
- Insert the accessories (if provided).

STARTING THE PRODUCT

- Connect the product to the power supply.
- The green light ("Normal") comes on.
- The red light (1) blinks, since the temperature inside the product is not yet low enough for loading food. This light normally goes off within six hours after startup.
- Place food inside only when the red light has gone off.

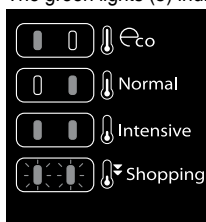
Note: If the STOP FROST function is deactivated, the lid cannot be immediately reopened after closing it, because the seal is tight. It is necessary to wait a few minutes before reopening the lid.

TEMPERATURE ADJUSTMENT

Use the button (4) to select the required temperature. To adjust the product temperature, proceed as follows:

- Press the button (4). With each press of the button, the set temperature will be changed cyclically between the values "Eco", "Normal", "Intensive" and "Shopping".
- Select "Intensive" for a colder storage temperature.
- In case of a partial load, it is advisable to select "Eco" to optimise energy consumption.

The green lights (3) indicate the selected setting as follows:



Eco: less cold temperature (left light on).

Normal: middle temperature (right light on).

Intensive: very cold temperature (both lights on).

Shopping: Quick Freeze (both lights on blinking). See the section "Freezing fresh food".

Note: In case of a power failure, the settings (except for the "STOP FROST" function) remain stored. The time required for the temperature inside the freezer to reach approximately the set value may vary depending on the climatic conditions and the setting selected.

STOP FROST FUNCTION

The STOP FROST function significantly reduces the amount of frost that can form inside the product, collecting it in the special easy to remove and clean "ICE BOX" (M) container. STOP FROST technology also allows easy reopening of the lid at any time whenever deemed necessary, even repeatedly, always with the same effort. The STOP FROST function is already activated when the product is switched on the first time (blue light on). It can be deactivated/reactivated by keeping the button (4) pressed for at least 3 seconds.

Thanks to STOP FROST technology, the ambient humidity is largely conveyed inside the ICE BOX (M), where it turns into ice.

Make sure to periodically remove the inside the ICE BOX (M) following the cleaning procedure described below. The frequency of cleaning operations required to ensure proper functioning of the system depends on the climatic conditions in the place of installation (more frequent cleaning is advisable in places with high humidity). The lack of or inadequate cleaning of the device can temporarily compromise its operation. Therefore, during normal use it is advisable to check the level of ice accumulated in the Ice Box (M), also by means of the special inspection window (I).

STOP FROST DEVICE CLEANING PROCEDURE

- Open the lid of the product.
- Grip the ICE BOX (M) with two hands and turn it anticlockwise (fig. S1), bringing the top indicator (H) from the closed padlock to the open padlock position (fig. S2), then pull out the ICE BOX (fig. S3).
- Remove any ice present inside the cone (L) on the lid (free the middle hole of any obstructions), being careful not to damage the surfaces.
- Dry the surfaces of the cone (L) on the lid with a soft cloth.
- Close the lid.
- Remove the ice contained in the ICE BOX (M), washing it with cold or lukewarm (not hot) water.
- Dry the inside and outside of the ICE BOX (M) with a soft cloth.
- Refit the ICE BOX (M), positioning the top indicator (H) at the open padlock then turn clockwise until aligning the top indicator (H) with the closed padlock (reverse order to that followed for removing the ICE BOX).
- Close the lid.

IF THE ICE BOX (H) IS BLOCKED OR HARD TO REMOVE

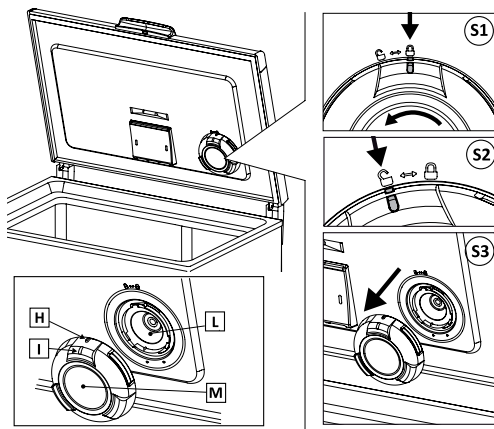
If the ICE BOX (M) is blocked, do not persist in trying to remove it, but proceed as follows:

- Close the lid and check if the STOP FROST function is on or off.
 - **If the function is on (blue light on):**
press the button (4) for 3 seconds to deactivate the function (blue light off), then press the button (4) again for 3 seconds; the STOP FROST function is reactivated (blue light on).
 - **If the function is off (blue light off):**
press the button (4) for 3 seconds: the STOP FROST function is activated (blue light on).
- Wait about 25 minutes for completion of automatic defrost, then try removing the ICE BOX (M) again by following the "STOP FROST DEVICE CLEANING PROCEDURE".

FREEZING FOOD

Preparing fresh food for freezing

- Wrap and seal fresh food in: aluminium foil, cling film, air and water-tight plastic bags, polyethylene containers with lids, provided they are suitable for freezing foods.
- Food must be fresh, mature and prime quality.



- Fresh vegetables and fruit should preferably be frozen as soon as they are picked to maintain the full original nutritional value, consistency, colour and flavour.
- Always leave hot food to cool before placing in the appliance.

Freezing fresh food

- Place foods to be frozen in direct contact with the walls of the appliance:
 - A) - food to be frozen,
 - B) - food already frozen.
 - Avoid placing foods to be frozen in direct contact with food already frozen.
 - For better and faster freezing, foods should be split into small portions; this will also be useful when the frozen items are to be used.
1. At least 24 hours before storing fresh food in the appliance, activate fast freezing ("Shopping") by repeatedly pressing button (4) until both green indicator lights (3) flash.
 2. Place the food to be frozen inside the appliance and keep the lid closed for 24 hours. Food will be fully frozen after this period of time.

The fast freezing function ("Shopping") can be deactivated by pressing button (4) and selecting a different temperature setting.

If the function is not deactivated manually, the appliance automatically deactivates the function after 50 hours, restoring the last setting selected (which was active for at least 1 minute) before the "Shopping" setting was selected.

FOOD STORAGE

Refer to the table on the appliance.

Classification of frozen foods

Load and classify the frozen foods; it is advisable to indicate the storage date on the packs, to ensure consumption before the expiry dates listed in months in Fig. 6 for each type of food.

Advice for storing frozen food

When buying frozen food, make sure that:

- The packaging is intact (food in damaged containers may have deteriorated). If a package is swollen or has damp patches, the product may not have been stored in optimum conditions and therefore undergone partial defrosting.

- When shopping, leave frozen food purchases until last and carry them in a thermally insulated bag.
- On arriving home, immediately place the frozen food in the appliance.
- Avoid or minimise temperature variations. Observe the expiry date on the packaging.
- Always follow the storage instructions on frozen food packages.

Note:

- **Eat fully or partially defrosted foods immediately. Do not refreeze unless the food is cooked after it has thawed. Once cooked, the food can be refrozen.**
- **In case of a prolonged power failure: Do not open the appliance door, except to place ice packs (if provided) over the frozen foods on the right and left side of the appliance. This will slow down the rise in temperature.**

PRECAUTIONS AND SUGGESTIONS

- **During installation, make sure the appliance does not damage the power cable.**
- Do not store glass containers with liquids inside the product as they may break.
- Do not eat ice cubes or ice lollies immediately after taking them out of the appliance as they may cause cold burns.
- Before carrying out any maintenance or cleaning, always unplug the appliance or disconnect the power supply.
- Do not install the appliance in places exposed to direct sunlight or near heat sources in order to avoid increasing power consumption.
- Do not put aerosol spray cans or recipients containing propellants or flammable substances in the appliance.
- Do not store or use gasoline or other flammable liquids and gases in the vicinity of this or any other domestic appliance. The fumes can create a fire hazard or explosion.
- Install the appliance in a perfectly horizontal position, on a floor strong enough to take its weight and in an area suitable for its size and use.
- Install the appliance in a dry, well-ventilated place. The appliance is set for operation at specific ambient temperature ranges, according to the climatic class indicated on the data plate located at the rear of the product (Fig. 7). The appliance may not work properly if it is left for a long time at a temperature outside the specified range.
- It is advisable to leave the appliance connected if left empty even for short periods.
- Be careful not to damage the floors when you move the appliance (e.g. parquet). To facilitate product handling, it is advisable to empty it beforehand, if possible.

Note: The appliance must be handled and installed by two or more persons.

- Do not use mechanical devices or any means other than those recommended and/or supplied by the manufacturer to speed up the defrosting process.
- Do not use electrical appliances inside the product, unless such appliances are specifically recommended by the manufacturer.

- The bulb used inside the appliance is specifically designed for domestic appliances and is not suitable for general room lighting within the home (EC Regulation 244/2009).
- **This appliance must not be used by children under 8 years of age, or by people with limited physical, sensory or mental abilities or without experience and knowledge of it, unless instructed in its use by those responsible for their safety.**
- **Do not allow children to play or hide inside the product: risk of becoming trapped inside and suffocating.**
- **Power cable modification or replacement must only be carried out by qualified personnel or After-sales Service.**
- **Do not use extension leads or adapters.**
- **Electrical disconnection must be possible either by unplugging the appliance or by means of a double-pole switch located upline from the socket.**
- **Ensure that the voltage indicated on the appliance data plate corresponds to the domestic supply voltage.**
- **Do not ingest the contents (non-toxic) of the ice packs (if provided).**
- **Restrict the number of times you open the door.**
- **This appliance features “skin condenser” technology: the condensing unit is integrated into the walls of the freezer. For this reason the side and front walls of the product may become hot while the product is running. This is entirely normal and also reduces the risk of condensation forming in particularly critical environmental conditions (see paragraph “Troubleshooting guide”).**

APPLIANCE DEFROSTING

The appliance should be defrosted when the thickness of ice on the walls reaches 5-6 mm.

- Disconnect the appliance from the power supply.
- Remove food from the appliance and put it in a very cool place or a thermally insulated bag.
- Leave the appliance door open.
- Remove the internal defrost water drain plug (depending on model) (Fig. 8).
- Remove the external defrost water drain plug (depending on model) and reposition it as shown in fig. 8.
- Use the separator (depending on model) inside the product as a recipient for any remaining water, (D) as shown in fig. 8. If there is no separator, use a shallow container.
- Defrosting can be sped up by using a spatula to detach the frost from the appliance walls.
- Remove the frost from the bottom of the appliance.
- **In order to avoid permanent damage to the appliance interior, do not use pointed or sharp metal instruments to remove the ice.**
- **Do not use abrasive products or heat up the interior artificially.**
- **Dry the inside of the appliance thoroughly.**
- Refit the plug after defrosting.

CLEANING AND MAINTENANCE

- Remove the frost from the upper edges (see Troubleshooting Guide).
 - Clean the inside after defrosting, using a sponge dampened with warm water and/or mild detergent.
 - Clean the side vent (if provided).
- Unplug the appliance before carrying out maintenance operations. Do not use abrasive products, scourers or stain-removers (e.g. acetone, trichloroethylene) to clean the appliance.**

To obtain the best results from your appliance, carry out cleaning and maintenance at least once a year.

HANGING THE LID LIGHT BULB (if provided)

- Disconnect the appliance from the mains power supply.
- Remove the diffuser by following the sequence of steps shown in the figure.
- Unscrew the light bulb and replace it with an identical bulb of the same wattage and voltage.
- Refit the diffuser and plug in the appliance.

TROUBLESHOOTING GUIDE

1. The red light blinks.

- Is there a power failure?
- Is a defrost in progress?
- Is the lid closed properly?
- Is the product near a heat source?
- Are the ventilation grille and condenser clean?

2. All the indicator lights blink together.

- Contact the After-Sales Service.

3. The product is excessively noisy.

- Is the product perfectly horizontal?
- Is the product touching other cabinets or objects that can cause vibrations?
- Has the packing been removed from the base of the product?

Note: A slight noise caused by circulation of the refrigerant gas even after the compressor has stopped is quite normal.

4. The indicator lights are off and the product does not work.

- Is there a power failure?
- Is the plug properly inserted in the socket?
- Is the electrical cable intact?

5. The indicator lights are off and the product works.

- Contact the After-sales Service.

6. The compressor runs continuously.

- Have hot foods been placed in the product?
- Has the lid been left open for a long time?
- Is the product in a very warm room or near a heat source?
- Has the "Shopping" function been activated? (green lights (3) blinking)


7. Too much ice on the top edges.

- Are the defrost water drain plugs correctly positioned?
- Is the lid closed properly?
- Is the lid seal damaged or twisted? (See the section "Installation")
- Have the 4 spacers been removed? (See the section "Installation")
- Is the STOP FROST function on?
- Are the ICE BOX (M) and cone (L) free of ice? Carry out the "STOP FROST device cleaning procedure"

- Make sure the hole of the STOP FROST, located in the outer rear edge of the lid, is not obstructed
- 8. Condensation on the external walls of the product.**
- It is normal for condensation to form in certain climatic conditions (humidity above 85%) or if the product is located in a damp or poorly ventilated room. The product's operation is in no way affected.
- 9. The layer of frost on the internal walls of the product is not uniform.**
- This phenomenon is quite normal.
- 10. The ICE BOX does not collect ice.**
- Make sure the hole of the STOP FROST, located in the outer rear edge of the lid, is not obstructed.


SAFEGUARDING THE ENVIRONMENT

1. Packing

The packing material is 100% recyclable and bears the recycling symbol . For disposal, comply with the local regulations. Keep the packing materials (plastic bags, polystyrene parts, etc.) out of the reach of children, as they are a potential source of danger.

2. Scrapping/Disposal

The appliance is manufactured using recyclable material. This appliance is marked in compliance with European Directive 2002/96/EC on Waste Electrical and Electronic Equipment (WEEE). By ensuring the correct disposal of this appliance, you can help prevent potentially negative consequences for the environment and the health of persons.

The symbol  on the appliance, or on the accompanying documents, indicates that this appliance should not be treated as domestic waste but must be taken to a special collection centre for the recycling of electrical and electronic equipment.

When scrapping the appliance, make it unusable by cutting off the power cable and removing the doors and shelves so that children cannot easily climb inside and become trapped.

Scrap the appliance in compliance with local regulations on waste disposal, taking it to a special collection centre; do not leave the appliance unattended even for a few days, since it is a potential source of danger for children.

For further information on the treatment, recovery and recycling of this product, contact your competent local office, the household waste collection service or the shop where you purchased the appliance.

Information:

This appliance does not contain CFCs. The refrigerant circuit contains R134a (HFC) or R600a (HC) (see the rating plate inside the appliance).

Appliances with Isobutane (R600a): isobutane is a natural gas without environmental impact, but is flammable. Therefore, make sure the refrigerant circuit pipes are not damaged.

This product may contain Fluorinated Greenhouse Gases covered by the Kyoto Protocol; the refrigerant gas is inside a hermetically sealed system.

Refrigerant gas: R134a has a Global Warming Potential of (GWP) 1300.

Declaration of conformity **CE**

- This appliance has been designed for preserving food and is manufactured in compliance with Regulation (CE) No. 1935/2004.
- This appliance has been designed, manufactured and marketed in compliance with:
 - safety objectives of the "Low Voltage" Directive 2006/95/CE (which replaces 73/23/CEE and subsequent amendments);
 - the protection requirements of Directive "EMC" 2004/108/EC.

Electrical safety of the appliance can only be guaranteed if it is correctly connected to an approved earthing system.

AFTER-SALES SERVICE

Before contacting After-Sales Service:

1. See if you can solve the problem yourself.
2. Switch the appliance on again to see if the problem has been solved. If it has not, disconnect the appliance from the power supply and wait for about an hour before switching on again.
3. If the problem persists after this course of action, contact After-Sales Service.

Specify:

- the nature of the fault,
- the model,
- the service number (the number after the word SERVICE on the rating plate on the rear of the appliance),
- your full address,
- your telephone number and area code.

SERVICE 0000 000 00000



