

# Always there to help you

Register your product and get support at  
[www.philips.com/welcome](http://www.philips.com/welcome)



GoGEAR

SA4ACT02

SA4ACT04



## User manual

# PHILIPS



# Contents

---

<b>1</b>	<b>Important safety information</b>	<b>2</b>
	General maintenance	2
	Recycling the product	3

---

<b>2</b>	<b>Your new player</b>	<b>5</b>
	What's in the box	5
	PC software loaded on the player	5
	Files loaded on the player	5
	Overview	5
	Controls	5
	Voice feedback	6
	Water-resistance performance	7

---

<b>3</b>	<b>Get started</b>	<b>8</b>
	Charge power	8
	Switch the player on or off	8
	Wear the player	8

---

<b>4</b>	<b>Play music</b>	<b>9</b>
	Transfer music to the player	9
	Play music	9
	Search for a song	9
	Select sound options	9

---

<b>5</b>	<b>Sync with PC music library through Philips Songbird</b>	<b>10</b>
	Install Philips Songbird	10
	Collect music files from the PC	10
	Set the watch folder	10
	Import music files	11
	Sync the player with Philips Songbird	12
	Select auto or manual sync	12
	Auto sync	12
	Manual sync	12

---

<b>6</b>	<b>Update the firmware through Philips Songbird</b>	<b>14</b>
----------	---	-----------

---

<b>7</b>	<b>Repair the player through Philips Songbird</b>	<b>15</b>
----------	---	-----------

---

<b>8</b>	<b>Technical data</b>	<b>16</b>
	PC requirements	16
	Water-resistance specifications of ACTION	16

## Need help?

Please visit

**[www.philips.com/welcome](http://www.philips.com/welcome)**

where you can access a full set of supporting materials such as the user manual, the latest software updates, and answers to frequently asked questions.

# 1 Important safety information

## General maintenance

The translation of this document is for reference only.

In the event of any inconsistency between the English version and the translated version, the English version shall prevail.



### Caution

- To avoid damage or malfunction:
- Use only power supplies listed in the user manual.
- Do not expose the product to excessive heat caused by heating equipment or direct sunlight.
- Do not drop the product or allow objects to fall on your player.
- Do not allow the product to be submerged in water. Do not expose headphone socket or battery compartment to water, as water entering the set may cause major damage.
- Active mobile phones in the vicinity may cause interference.
- Back up your files. Ensure that you retain the original files you have downloaded to your device. Philips is not responsible for any loss of data if the product becomes damaged or not readable / legible.
- Manage (transfer, delete, etc.) your music files only with the supplied music software to avoid problems.
- Do not use any cleaning agents containing alcohol, ammonia, benzene, or abrasives as these may harm the product.
- Batteries (battery pack or batteries installed) shall not be exposed to excessive heat such as sunshine, fire or the like.
- Danger of explosion if battery is incorrectly replaced. Replace only with the same or equivalent type.

### About operating and storage temperatures

- Operate in a place where temperature is always between 0 and 45°C (32 to 113°F)

- Store in a place where temperature is always between -20 and 45°C (-4 to 113°F).
- Battery life may be shortened in low temperature conditions.

### Replacement parts/accessories:

Visit [www.philips.com/support](http://www.philips.com/support) to order replacement parts/accessories.

### Hearing Safety



A pleine puissance, l'écoute prolongée du baladeur peut endommager l'oreille de l'utilisateur.



### Warning

- To prevent possible hearing damage, do not listen at high volume levels for long periods.

**The maximum output voltage of the player is not greater than 150 mV.**

### Modifications

Modifications not authorized by the manufacturer may void user's authority to operate the product.

### Copyright information

All other brands and product names are trademarks of their respective companies or organizations.

Unauthorized duplication of any recordings whether downloaded from the Internet or made from audio CDs is a violation of copyright laws and international treaties.

The making of unauthorized copies of copy-protected material, including computer

programs, files, broadcasts and sound recordings, may be an infringement of copyrights and constitute a criminal offense. This equipment should not be used for such purposes.

The Windows Media and the Windows logo are registered trademarks of Microsoft Corporation in the United States and/or other countries.

### Be responsible! Respect copyrights.



## Be responsible Respect copyrights

Philips respects the intellectual property of others, and we ask our users to do the same. Multimedia content on the internet may have been created and/or distributed without the original copyright owner's authorization.

Copying or distributing unauthorized content may violate copyright laws in various countries including yours.

Compliance with copyright laws remains your responsibility.

The recording and transfer to the portable player of video streams downloaded to your computer is intended only for use with public domain or properly licensed content. You may only use such content for your private, non-commercial use and shall respect eventual copyright instructions provided by the copyright owner of the work. Such instruction may state that no further copies shall be made. Video streams may include copy protection technology that prohibits further copying. For such situations the recording function will not work and you will be notified with a message.

### Data logging

Philips is committed to improving the quality of your product and enhancing the Philips user experience. To understand the usage profile of this device, this device logs some info / data to the non-volatile memory region of the device. These data are used to identify and detect any failures or problems you as a user may

experience while using the device. The data stored, for example, will be the duration of playback in music mode, duration of playback in turner mode, how many times battery low was encountered, etc. The data stored do not reveal the content or media used on the device or the source of downloads. The data stored on the device are retrieved and used ONLY if the user returns the device to the Philips service center and ONLY to simplify error detection and prevention. The data stored shall be made available to user on user's first request.

## Recycling the product

Your product is designed and manufactured with high quality materials and components, which can be recycled and reused.

When you see the crossed-out wheel bin symbol attached to a product, it means the product is covered by the European Directive 2002/96/EC:



Never dispose of your product with other household waste. Please inform yourself about the local rules on the separate collection of electrical and electronic products. The correct disposal of your old product helps prevent potentially negative consequences on the environment and human health.



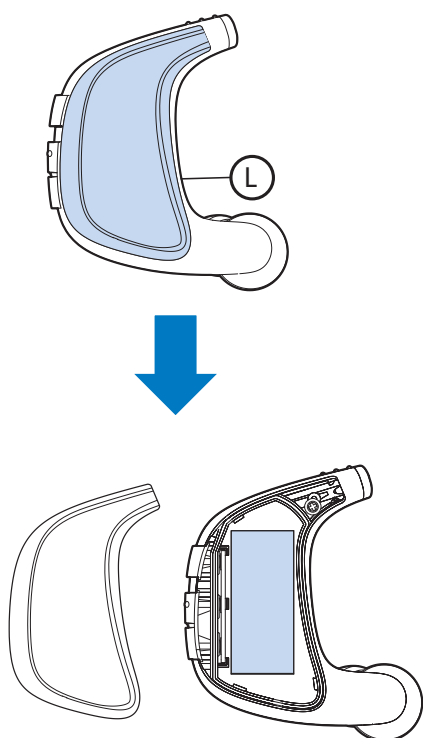
### Warning

- For products with "non-exchangeable" built-in batteries: The removal of (or the attempt to remove) the battery invalidates the warranty. This procedure is only to be performed at the end of the product's life.

Your product contains a built-in rechargeable battery covered by the European Directive 2006/66/EC, which cannot be disposed of with normal household waste.



To safeguard the functionality and safety of your product, take your product to an official collection point or service center where a professional can remove the battery as shown:



Please inform yourself about the local rules on separate collection of batteries. The correct disposal of batteries helps prevent potentially negative consequences on the environment and human health.

#### **Notice for the European Union**

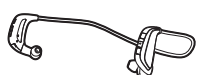
This product complies with the radio interference requirements of the European Union.

## 2 Your new player

### What's in the box

Make sure that you have received the following items:

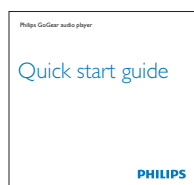
ACTION



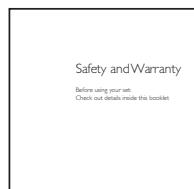
USB cable



Quick start guide



Safety and Warranty sheet



#### Note

- The images serve as reference only. Philips reserves the right to change color/design without notice.

### PC software loaded on the player

**ACTION** comes with the following PC software:

- **Philips Songbird** (helps you update the firmware of the player, and manage your media library on a PC and the player).

To get Philips Songbird online,

- On your PC, go to [www.philips.com/support](http://www.philips.com/support).

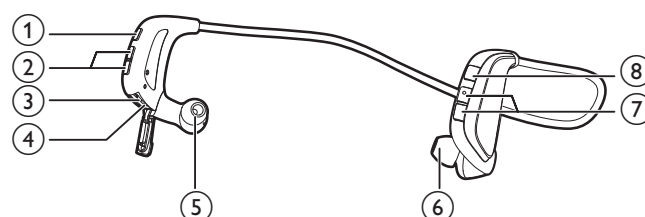
### Files loaded on the player




The following files are loaded on **ACTION**:

- User manual
- Frequently asked questions

### Overview

#### Controls



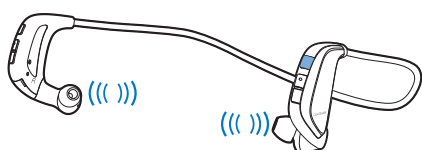
- 1** 
  - Press and hold: Switch the player on or off
  - Press: Pause/ resume play
- 2** 
  - Press: Skip to the previous or next song
  - Press and hold: Press and hold the two buttons together to switch random play on or off
- 3** **RESET**
  - Press the hole by using the tip of a ball pen when the player does not respond to the pressing of keys
- 4** **USB connector for power charging and data transfer**
- 5** **Right headphone**
- 6** **Left headphone**
- 7** 
  - Press: increase/decrease the volume
  - Press and hold: Press and hold the two buttons together to switch **FullSound** on or off

8 

- Press: Check the battery level
- Press and hold: Switch the workout mode on or off; When the workout mode is on, press the button to check the workout time and calorie burnt.

## Voice feedback

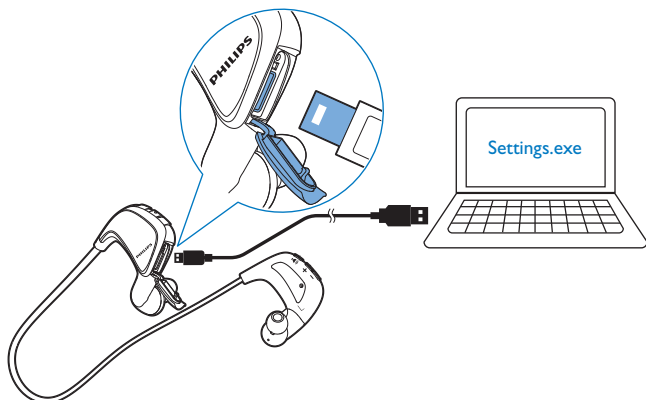
With the voice feedback, you can know the status of the player.



## Set up the player

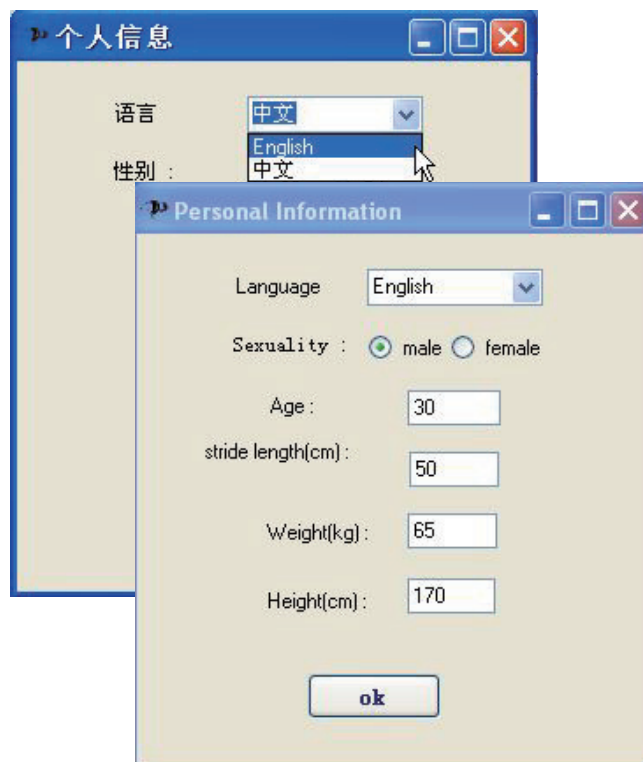
With **Settings.exe**, you can do the following to set up **ACTION** as needed:

- Select languages for the voice feedback of **ACTION**;
- Enter your personal information to estimate the calorie that you have burnt during the workout mode.






- 1 Connect **ACTION** to a PC.
- 2 On the PC, launch **Settings.exe**:
  - ① On the PC, select My Computer (Windows XP / Windows 2000) / Computer (Windows Vista / Windows 7 / Windows 8).
  - ② Click the Philips GoGear ACTION icon. Double-click the Settings.exe.

- 3 Select your options or enter your information.




## Check workout information

With the workout mode, you can check your workout time and estimate your calorie consumption. Before you use the workout mode, set up the player.

- 1 Press and hold  to switch on the workout mode.
- 2 Press .
  - ➔ You hear the voice feedback on your current workout time and estimate of calorie burnt.
- 3 Press and hold  again to switch off the workout mode.
  - ➔ You hear the voice feedback on your total workout time and estimate of calorie burnt.

## Check battery level

- When the workout mode is off, press .
  - ➔ You hear the voice feedback on battery level.



---

## Water-resistance performance

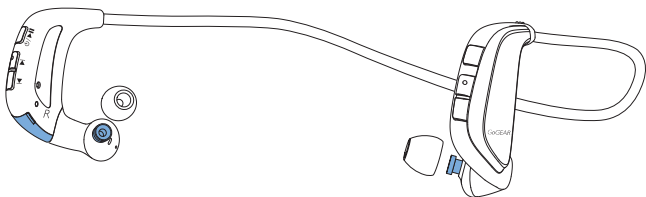
The water-resistance performance of **ACTION** meets the Ingress Protection Rating (IP Code) IPX5 of IEC60529 (see 'Water-resistance specifications of ACTION' on page 16). You can use the player in the rain or after perspiration.

### Note

- The headphone sections are not water-resistant.

### To wash the player,

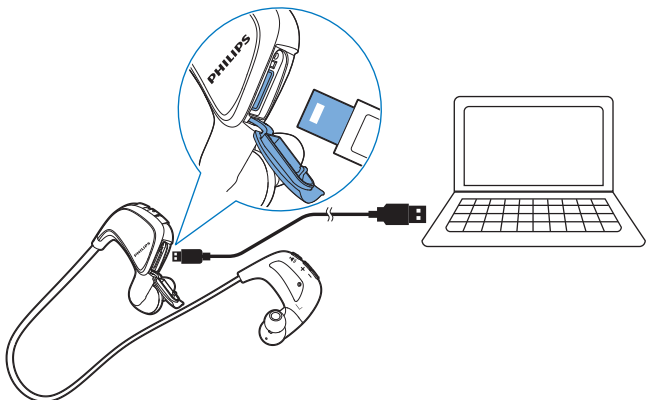
- Make sure that you have closed the USB cover properly.
- Keep the headphone sections from water.
- Rinse the player with fresh water or gently running water at normal temperature.
- When you dry the player, keep from using hair dryers.
- Use the player after it dries completely.



# 3 Get started

## Charge power

**ACTION** has a built-in battery that can be charged through the USB socket of a computer.



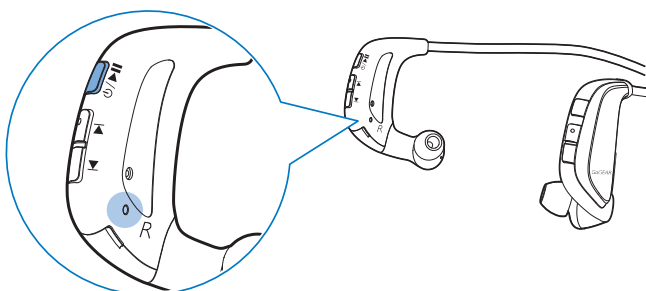
- 1 Open the USB cover.
- 2 Use the USB cable to connect **ACTION** to a PC.
  - ↳ During power charging, the red indicator lights up.
  - ↳ When the battery is full, the blue indicator lights up.



### Tip

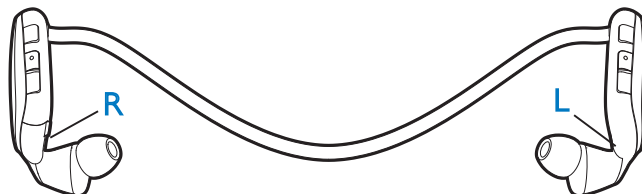
- Rechargeable batteries have a limited number of charge cycles. Battery life and number of charge cycles vary by use and settings.

## Switch the player on or off



- Press and hold ► until the blue or red indicator lights up.
  - ↳ **Power on:** The blue indicator lights up. Music play starts.
  - ↳ **Power off:** The red indicator lights up.

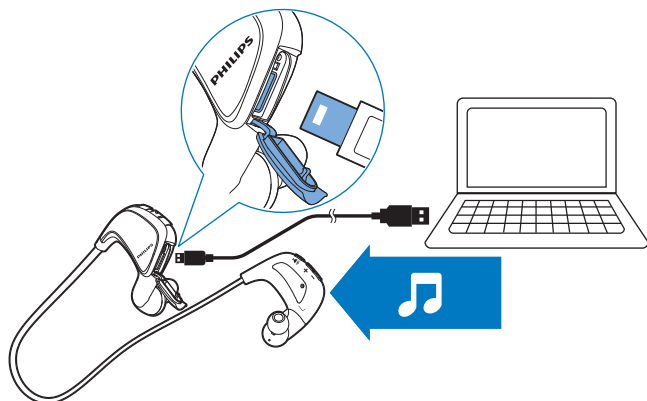
## Wear the player



- Wear the player as shown, the right headphone in your right ear and the left headphone in your left ear.

## 4 Play music

### Transfer music to the player



You can transfer music from your PC media library to **ACTION** in the following ways:

- Drag and drop music files in Windows Explorer;
- Sync through Philips Songbird (see 'Sync with PC music library through Philips Songbird' on page 10).

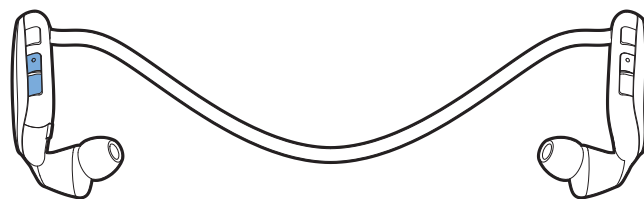
To drag and drop music files in Windows Explorer,

- 1 Connect **ACTION** to a PC.
- 2 On the PC, under **My Computer** or **Computer**,
  - drag and drop music files from the PC to **ACTION**.

### Play music

- 1 Make sure that you have switched on the player (see 'Switch the player on or off' on page 8).
  - ↳ The blue indicator lights up. Music play starts.
- 2 Press **▶||** to pause or resume play.

### Search for a song



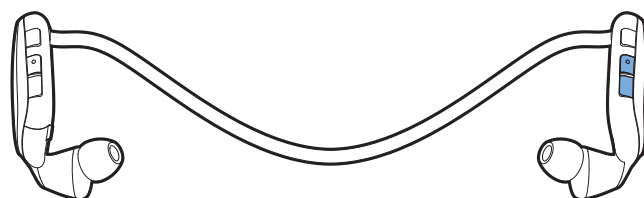
- Press **◀ / ▶** to skip to the previous or next song.

### Switch the random play on or off

- During music play, press and hold **◀, ▶** together:
  - ↳ You hear the voice feedback.

### Select sound options

#### Change the volume level



- Press **+, -**.
  - ↳ During music play, you hear the change of volume level.

### Switch FullSound on or off

**FullSound** restores the sonic details that music compression loses (e.g. MP3, WMA).

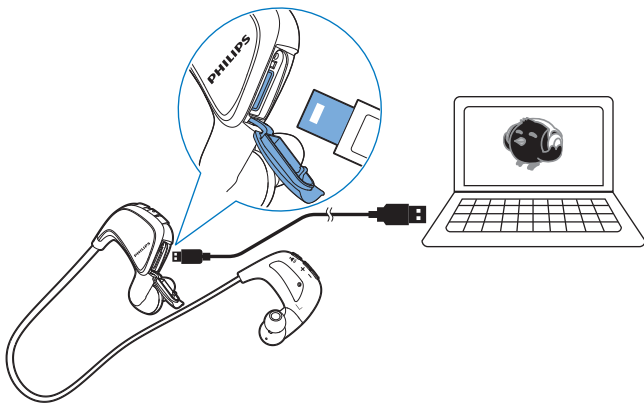
- During music play, press and hold **+, -** together:
  - ↳ You hear the voice feedback.

## 5 Sync with PC music library through Philips Songbird

With **Philips Songbird**, you can do the following:

- Manage your music collection on a PC;
- Sync **ACTION** with your PC music library;
- Register **ACTION** on [www.philips.com/welcome](http://www.philips.com/welcome);
- Update the firmware of ACTION (see 'Update the firmware through Philips Songbird' on page 14);
- Repair ACTION (see 'Repair the player through Philips Songbird' on page 15).

### Install Philips Songbird



- 1 Connect **ACTION** to a PC.
- 2 On the PC, select **My Computer** (Windows XP / Windows 2000) / **Computer** (Windows Vista / Windows 7).
- 3 Right click on the **Philips GoGear ACTION** icon. Select **Download Philips Songbird**.
  - Alternatively, click the **Philips GoGear ACTION** icon. Double click the **setup.exe**.

- 4 Follow the onscreen instructions to complete the installation.



#### Note

- The installation requires you to agree to the license terms.

## Collect music files from the PC

### Set the watch folder

#### Create a central folder

You can have all music files automatically added to your library when you copy them to a folder. Creating a central folder is recommended. In **Philips Songbird**, set the central folder as the watch folder. Each time you launch **Philips Songbird**, songs are added to/ removed from **Philips Songbird** as they are on the central folder.

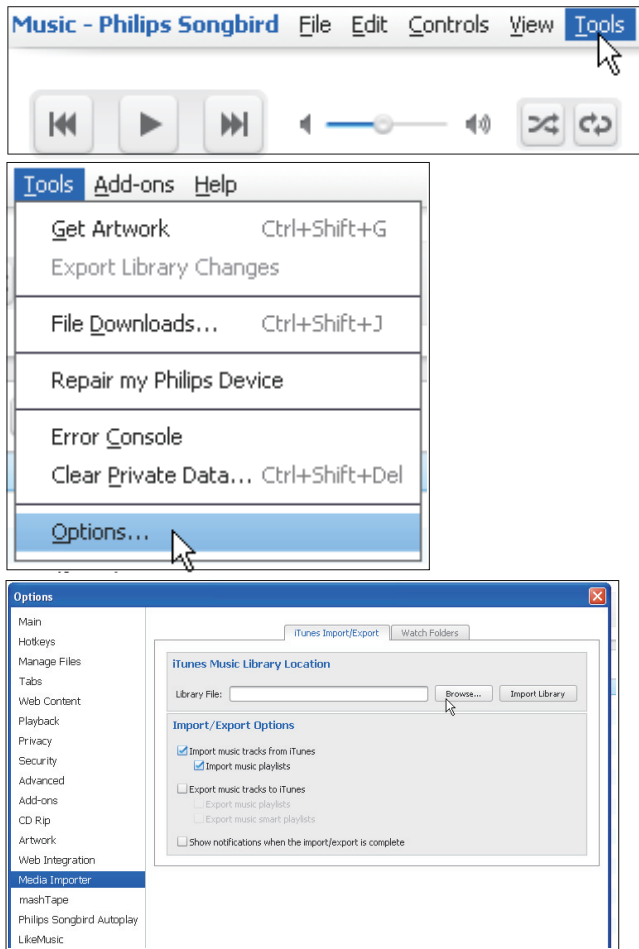
On the PC, create a central folder to save all music files, for example, D:\Songbird media.

#### First-time launch

The first time you launch **Philips Songbird** on a PC, do the following as prompted to import existing media files into **Philips Songbird**:

- Select the iTunes media folder to import an existing iTunes library;
- Select the central folder to search and import the existing music files.
  - ↳ The central folder is set as the watch folder of **Philips Songbird**.

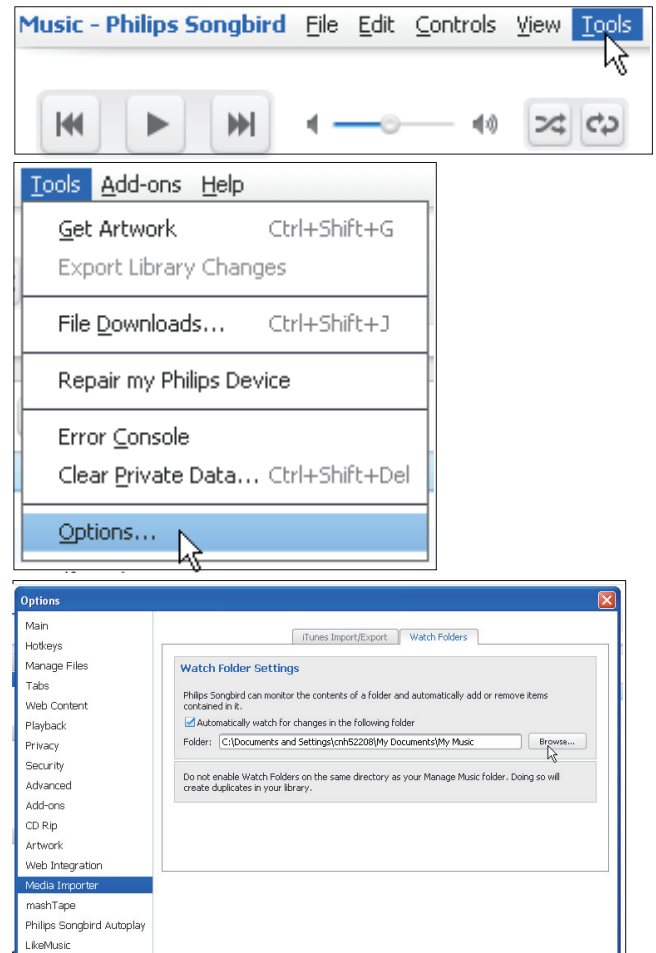
#### Set iTunes media folder



- 1 On **Philips Songbird**, go to **Tools > Options...**
- 2 Select **Media Importer**, and then the **iTunes Importer** tab.
- 3 Verify your library location and options.
- 4 Click the **Import Library** button next to the library location.
  - ➔ The software imports the iTunes library into **Philips Songbird**.

### Set the watch folder

In **Philips Songbird**, set the watch folder as follows:



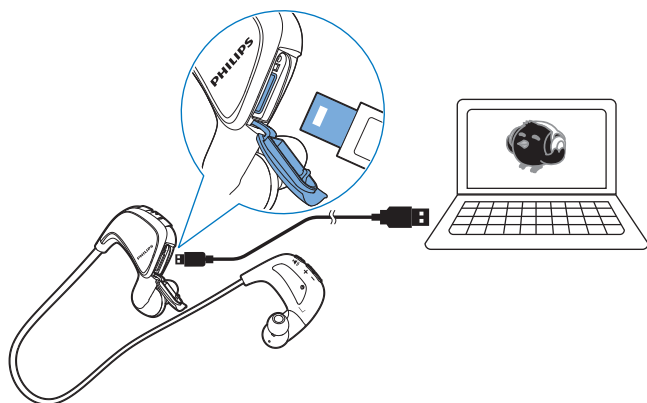
- 1 Select **Tools > Options**.
- 2 In **Options**, select **Media Importer**. Then, select the **Watch Folders** tab.
- 3 In **Watch Folders**, tick the check box as shown.
- 4 Click **Browse**, and select the central folder (e.g. D:\Songbird media) as the watch folder.
  - ➔ In **Philips Songbird**, media files are added or removed as they are in the central music folder.

## Import music files

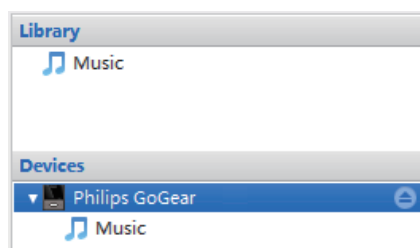
In **Philips Songbird**,

- go to **File > Import Media** to select folders on the PC.
  - ➔ Music files are added under **Library**.

# Sync the player with Philips Songbird



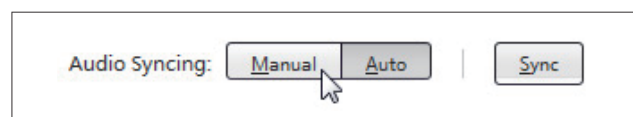
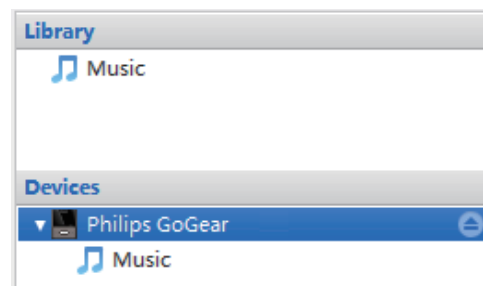
- 1 On the PC, launch **Philips Songbird**.
- 2 Connect the player to the PC.
  - ↳ On **Philips Songbird**, the player is displayed when it is recognized by the PC.



## Select auto or manual sync

The first time you connect the player to **Philips Songbird**, select auto sync as prompted. The player sync with **Philips Songbird** automatically. If you do not select auto sync, you switch on the manual sync.

To select auto or manual sync,



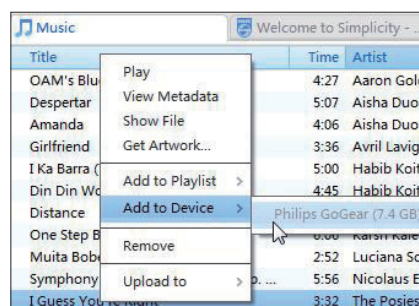
- 1 Select the player under **Devices**.
  - ↳ A pop-up screen is displayed.
- 2 On the pop-up screen, select **Manual** or **Auto**.
- 3 To confirm the option, click **Apply**.

## Auto sync

- If you have selected auto sync, auto sync starts automatically when you connect the player to a PC;
- Alternatively, select the player under **Devices**, and click **Sync**.

## Manual sync

To transfer selected media files manually,



- 1 On the Content pane, right click on a selected media file.
- 2 Select **Add to Device > ACTION**.
  - ↳ Selected files are transferred to **ACTION**.



#### Tip

- To select multiple files at the same time, hold down the **Ctrl** button when you click options.

## 6 Update the firmware through Philips Songbird

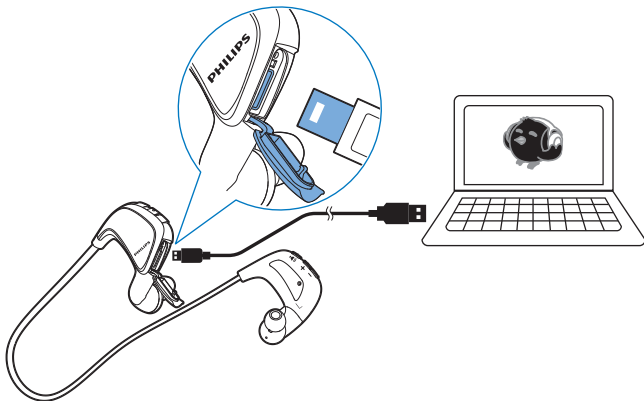
**ACTION** is controlled by an internal program called firmware. Newer versions of the firmware may have been released after you have purchased **ACTION**.

Through **Philips Songbird**, you can check for and install firmware updates for **ACTION** over the Internet.

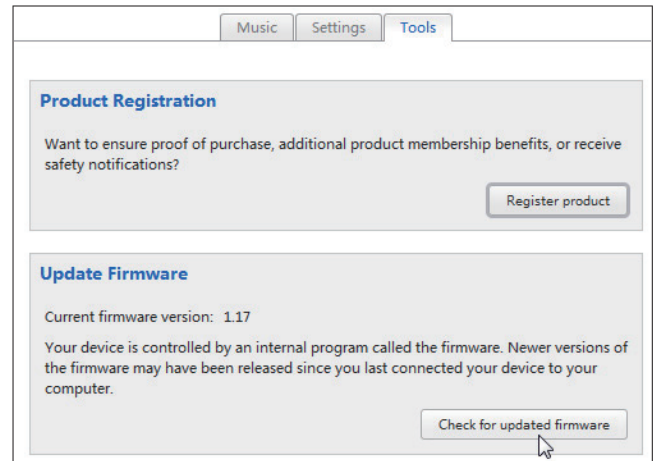
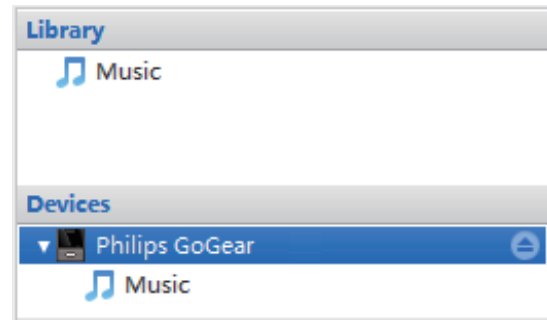


Tip

- Your music files are not affected by a firmware update.



- 1 Make sure that you have connected your PC to the Internet.
- 2 Connect **ACTION** to the PC.
- 3 On the PC, launch **Philips Songbird**.
  - If necessary, click **Start > Programs > Philips > Philips Songbird**.
- 4 Click **ACTION** in the Player pane. Then, select **Tools > Check for updated firmware** in the pop-up window.
  - ↳ **Philips Songbird** checks for updates from the Internet.



- 5 Follow the onscreen instructions.
  - ↳ Downloading and installation of firmware update start automatically.
  - ↳ The **ACTION** restarts after the firmware is updated and is ready for use again.



Note

- Wait until the update is completed, then disconnect the **ACTION** from the computer.



# 7 Repair the player through Philips Songbird

If **ACTION** is not working properly or the display freezes, you can reset it without losing data:

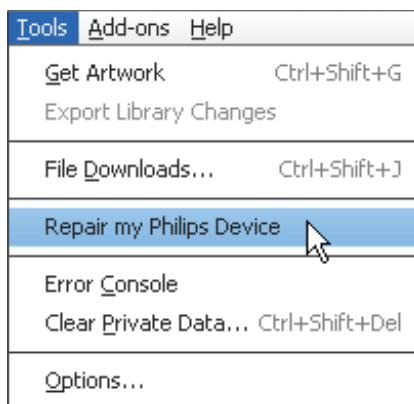
## To reset ACTION?

- Insert a pen tip or other object into the reset hole. Hold until the player shuts down.

If you fail to reset the player, repair the player through Philips Songbird:

- 1 On your PC, launch **Philips Songbird**.
  - If your PC runs Windows 7, launch **Philips Songbird** as administrator. Right-click **Philips Songbird** and select **Run as Administrator**.

- 2 In **Philips Songbird**,



- select **Tools > Repair my Philips Device**;
  - select **ACTION** in the pop-up list.
- 3 Connect the player to the PC.
    - **Make sure that you follow the onscreen instructions on how to connect the player to the PC.**
  - 4 Follow the onscreen instructions to complete the repair.

# 8 Technical data

## Power

- Power supply: 90 mAh Li-ion polymer internal rechargeable battery
- Play time<sup>1</sup>  
Audio (.mp3): up to 12 hours

## Software

- Philips Songbird: To update firmware and transfer music

## Connectivity

- Headphone 3.5 mm
- USB 2.0 High speed

## Sound

- Channel separation: 45 dB
- Frequency Response: 20-18,000 Hz
- Output power: 2 x 2.4 mW
- Signal to noise ratio: > 84 dB

## Audio playback

Supported formats:

- MP3  
Bitrate: 8-320 kbps and VBR  
Sampling rates: 8, 11.025, 16, 22.050, 32, 44.1, 48 kHz
- WMA (unprotected)  
Bitrate: 5-320 kbps  
Sampling rates: 8, 11.025, 16, 22.050, 32, 44.1, 48 kHz
- WAV

## Storage media

Built-in memory capacity<sup>2</sup>:

- SA4ACT02 2 GB NAND Flash
- SA4ACT04 4 GB NAND Flash

## Media transfer<sup>3</sup>

- Windows Explorer (drag and drop)
- Songbird (sync)

## Note

- Specifications are subject to change without notice.
- <sup>1</sup> Rechargeable batteries have a limited number of charge cycles. Battery life and number of charge cycles vary by use and settings.
- <sup>2</sup> 1 GB = 1 billion bytes; available storage capacity is less. Full memory capacity may not be available as some memory is reserved for the player. Storage capacity is based on 4 minutes per song and 128-kbps MP3 encoding.
- <sup>3</sup> Transfer speed depends on operating system and software configuration.

## PC requirements

- Windows® XP (SP3 or above) / Vista / 7
- Pentium III 800 MHz processor or higher
- 512 MB RAM
- 500 MB hard disk space
- Internet connection
- Windows® Internet Explorer 6.0 or later
- CD-ROM drive
- USB port

## Water-resistance specifications of ACTION

The water-resistance specifications of the player meet the Ingress Protection Rating (IP Code) IPX5 of IEC60529:

- The test for compliance with IPX5 is conducted for each surface of the enclosure of the player, except for the headphones section and when the USB cover of the player is closed properly;
- The player can work normally when it is subject to water that jets from a nozzle with an opening of 6.3-mm diameter, at a flow rate of 12.5 liters per minute, for a duration of more than three minutes, and from a distance of about 3 meters.

