

PHILIPS

AVENT

Niplette™

A non-surgical approach

For flat or inverted nipples

2 Niplettes and 2 Breast pads



SCF152/02



Simple, effective solution for inverted nipples

Clinically proven results*

The Niplette™ helps mums with flat or inverted nipples to breastfeed. This unique and revolutionary instrument provides an easy, non-surgical and long-lasting solution. In a matter of weeks of continued wear, the nipple will stay erect.

Easy and comfortable

- A device for flat or inverted nipples
- A simple procedure
- Additional information

Simple and discreet - suitable for any nipple size

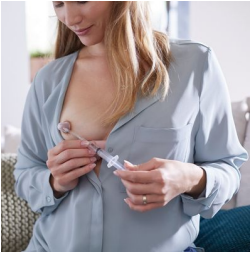
- Ideal for use before or in the first 6 months of pregnancy

Non-surgical – gentle sucking action

- Clinically proven results

Highlights

For flat or inverted nipples

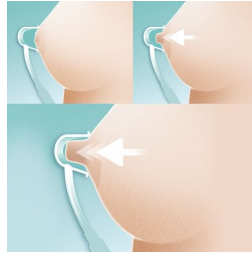


Inverted or non-protractile nipples affect up to 10% of women, causing psychological distress and making breast feeding difficult for mother and baby. The suckling action of the baby should draw out the nipple. If not, the Niplette™ is a simple, comfortable solution that can help. The device makes it possible for women with flat or inverted nipples to comfortably breastfeed without the need for invasive surgery*. It consists of a transparent nipple mould with a sealing flange, attached to a valve and a syringe port.

When use is recommended

Ideally, the Niplette should be used before pregnancy and be worn in 8 hour periods per day or night*. If the breasts are not too sensitive, it can also be used in the first six months of pregnancy to achieve a permanent correction or, after the birth of the baby, for a few minutes before each feed. The Niplette will suck the nipple out, enabling the baby to latch on easily and help establish breastfeeding during the first few days. The permanent cosmetic correction can then be effected once breastfeeding is over. If this is the case, the Niplette can be applied again from time to time.

Gentle sucking action



The cup is held over the nipple areola with one hand and air is withdrawn using a 5 ml syringe so that the nipple can be sucked into it. The user is in control of the suction and can pull on the nipple as firmly as comfortable. When the nipple has been pulled out, the user can continue with their normal activities, after carefully separating the syringe from the valve, and wear the Niplette discreetly inside a bra. Initial usage is encouraged as much as possible*.

Proven clinical success

Clinical trials* have been carried out on the Niplette and proved successful in achieving a permanent correction to flat or inverted nipples, whether the condition existed since puberty or was a result of breast reduction surgery. Provided that they had not undergone breast surgery, pregnant women who had been concerned about breastfeeding all went on to breastfeed successfully. A permanent correction is normally achieved in between one and three months of continuous use.

Additional information

Niplette will not function once milk flow comes in fully. However, by then baby will have become used to successfully latching on to the nipple.

Specifications

What is included

Niplette: 2 pcs
Disposable breast pad: 2 pcs

Design

Discreet design

Development stages

Stages: Before Pregnancy, 0–6 months, Breastfeeding initiation phase

Ease of use

Easy concealing under clothing: Push syringe to release vacuum

Easy to clean

Clean in hot soapy water

Functions

Solution for flat nipples: Use gentle suction

Material

Niplette: Polypropylene
Breast pads: Dermatologically tested



* McGeorge, Mr. D, FRCS (Plast), The Niplette: an instrument for the non-surgical correction of inverted nipples, British Journal of Plastic Surgery (1994) Vol 47, Pages 46–49

* This section contains consumer opinions on the product. Philips dissociates itself from the content entered by consumers in this section and consequently any technical information and/or advice on the use of the product included therein are not intended as official Philips information.