



Hairdryer

- ThermoProtect Ionic
- 2200 W
- Ionic Care
- Volume diffuser

HP8232/00

Fast dry at a lower temperature with ThermoProtect

with volume diffuser and 14 mm styling nozzle.

Protect your hair while enjoying fast drying results. This hair dryer has multiple speed and temperature settings. Features ThermoProtect for fast drying at a constant caring temperature and Ionic Care for frizz-free shine.

Benefits

Beautifully styled hair

- Professional 2200 W for perfect salon results
- Six flexible speed and temperature settings for full control
- Cool Shot sets your style
- Perfect styling results with a slim styling nozzle
- Adds volume, maximising thickness, curls and bouncy styles
- Perfect styling results with a slim styling nozzle

Less Hair Damage

- ThermoProtect temperature setting
- Ionic conditioning for shiny, frizz-free hair

Easy to use

- 1.8 m power cord
- Easy storage hook for convenient storage
- Removable air flow filter makes cleaning quick and easy

PHILIPS

Features

ThermoProtect temperature



The ThermoProtect temperature provides the optimal drying temperature and gives additional protection from overheating the hair. With the same powerful airflow, you will get the best results, whilst being kind to your hair.

Professional 2200 W



This 2200 W professional hairdryer creates a powerful airflow. The resulting combination of power and speed makes drying and styling your hair quicker and easier.

Speed and temperature settings



The speed and heat required can be easily adjusted to create the perfect style. Six different settings ensure full control for precise and tailored styling.

Ionic conditioning



Give your hair instant care with ionic conditioning. Charged negative ions eliminate static, condition your hair and smooth the hair cuticles to intensify hair's shine and glossiness. The result is smooth and frizz-free hair with beautiful shine.

Cool Shot



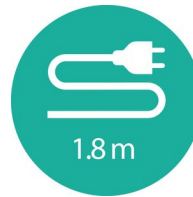
A must-have professional function for hair stylists. The Cool Shot button provides an intense burst of cold air. It is used after styling to finish and set the style.

Slim styling nozzle



Perfect styling results and a shiny, polished look with a slim styling nozzle for precise styling.

1.8 m cord



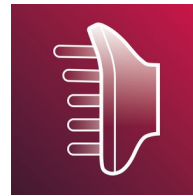
Convenient to use thanks to the 1.8-m power cord length.

Easy storage hook



The rubberised hook is located at the base of the handle and provides another storage option, particularly convenient for use in the home or when staying at a hotel.

Asymmetric volume diffuser



The volume diffuser has a unique asymmetric design that is contoured to the head, making it easier and more intuitive to use. The diffuser also spreads the flow of air across the hair, drying hair more healthily, boosting volume and reducing frizz. For best results, hold close to the crown and root area and let the diffuser's fine textured pins encourage volume, add bounce and shape curls.

Removable air inlet filter

The removable air flow filter of your hairdryer is easy to maintain. Simply click off to clean. Doing this regularly will prevent build-up of dust and hair that can affect drying performance.

Slim styling nozzle



Perfect styling results and a shiny, polished look with a slim styling nozzle for precise styling.

Specifications

Please note that this is a pre-sales leaflet. The contents of this leaflet reflect the best of our knowledge per date and country mentioned above. The contents of this leaflet are subject to change without notice. Philips does not accept any liability as to the contents of this leaflet.

Technical specifications

Voltage	220-240 V
Frequency	50–60 Hz
Wattage	2200 W
Power	2200 W
Colour/finishing	High Gloss and Matte White
Housing material	ABS
Motor	DC Motor
Cord length	1.8 m

Features

Foldable handle	No
Cool shot	Yes
Dual voltage	No
Travel pouch	No
Ceramic coating	No
Ion conditioning	Yes
Hanging loop	Yes
Diffuser	Asymmetric volume diffuser
Nozzle / Concentrator	Slim 14-mm styling nozzle
Number of attachments	2

Service

2 year guarantee	Yes
------------------	-----

Weight and dimensions

A-Box Dimensions	Height = 25 cm Length = 63cm Width = 35cm
A-Box Weight	6.2 kg
F-Box Dimensions	Depth = 11cm Height = 23cm Width = 31cm
F-Box weight	0.9 kg
Product size	Height = 31 cm Length = 10 cm Width = 22cm
Product weight (excl. pack)	0.6 kg



data subject to change
2016, December 14

Version: 10.1.1
EAN:

© 2016 Koninklijke Philips N.V.
All rights reserved.

Specifications are subject to change without notice. Trademarks are the property of Koninklijke Philips N.V. or their respective owners.

www.philips.com