



Philips Brilliance
LCD monitor with
Webcam, MultiView

Quad HD
27"/68.6 cm
2560 x 1440 display

Brilliance

272C4QPKAB

Crystalclear images, maximum performance

with MultiView

This Philips 27" display will amaze you with its Crystalclear Quad HD 2560x1440 images and brilliant colours. MultiView allows active dual connect and view. Its 2mp webcam enables you to socialise.

Brilliant performance

- PLS Quad HD technology ensures 8 bit colour, 109 ppi images
- Crystalclear images with Quad HD 2560x1440 pixels
- MultiView enables active dual connect and view at the same time
- Webcam and mic keeps you connected with family and friends
- SmartConnect with HDMI, Display port and Dual link DVI
- Built-in stereo speakers for multimedia

Easy to experience

- SmartImage presets for easy optimised image settings
- SmartTxt for an optimised reading experience
- SmartKolor for rich vibrant images

Sustainable Eco-design

- PowerSensor saves up to 80% energy costs
- PVC-BFR free housing

PHILIPS

Highlights

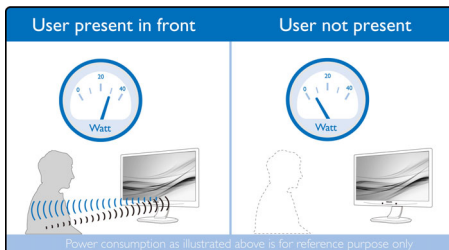
PLS Quad HD

This professional Philips display uses the latest PLS Quad HD panel giving you ultra high-res brilliant wide angle images with 2560x1440 pixel resolution. With excellent 8 bit colour depth combined with 109 ppi density, you can now enjoy professional true colour sRGB images compared to limited 6 bit colour depth displays with 82ppi density. Its higher brightness and lower power consumption compared to conventional wide view angle displays ensure you always have brilliant performance, while saving energy too. It is best suited for professional applications like CAD, Graphics design, Image rendering etc.

Crystalclear images

These latest Philips screens deliver CrystalClear, Quad HD 2560x1440 or 2560x1080 pixel images. Utilising high-performance panels with a high-density pixel count, enabled by high-bandwidth sources like DisplayPort, HDMI, Dual link DVI, these new displays will make your images and graphics come alive. Whether you are a demanding professional requiring extremely detailed information for CAD-CAM solutions, using 3D graphic applications or a financial wizard working on huge spreadsheets, Philips displays will give you CrystalClear images.

PowerSensor



PowerSensor is a built-in 'people sensor' that transmits and receives harmless infrared signals to determine if the user is present and then automatically reduces monitor brightness when the user steps away from the desk, cutting energy costs by up to 80 percent and prolonging monitor life

Socialise with webcam

Embedded 2 megapixel webcam with superb, bright and crisp images enables you to socialise

with your family and friends. Its sensitive microphone ensures that your voice carries through clearly. You can hear clear audio either from its built-in stereo speakers, or attach your own headphones for private conversations. This simple built-in solution ensures you don't have to get in a tangle anymore with installing a camera and positioning microphones.

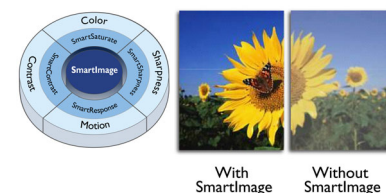
MultiView technology

With the ultra high resolution Philips MultiView display you can now experience a world of connectivity in comfort whether at the office or at home. MultiView enables active dual connect and view so that you can work with multiple devices like a PC and Notebook side-by-side simultaneously, making complex multi-tasking work a breeze. Watching live football feeds from your set-top box on the right-hand side, while browsing the Internet from your notebook on the left is now easy. You may want to keep an eye on the live news feed with audio in the small window, while working on your latest blog.

SmartConnect

With a plethora of connectivity, these Philips displays come equipped with multiple connections like Dual link DVI, Display Port and universal HDMI connector, enabling you to enjoy high-resolution uncompressed video and audio content. Regardless of what source you use, you can rest assured that this Philips display will ensure your investment is not made obsolete any time soon!

SmartImage



SmartImage is an exclusive leading edge Philips technology that analyses the content displayed on your screen and optimises your display performance. This user-friendly interface allows you to select various modes, like Office,

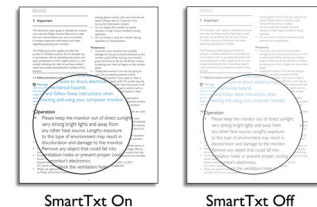
Photo, Movie, Game, Economy etc., to fit the application in use. Based on the selection, SmartImage dynamically optimises the contrast, colour saturation and sharpness of images and videos for ultimate display performance. The Economy mode option offers you major power savings. All in real time at the touch of a single button!

SmartKolor



SmartKolor is a sophisticated colour extension technology that is able to enhance the visual colour range of the display. By boosting the RGB gain level of the display, you can achieve rich, vibrant images to experience outstanding photos and videos.

SmartTxt



SmartTxt is a sophisticated algorithm that enhances reading of text-based applications such as PDF documents and eBooks, which usually requires more focus and concentration. The SmartTxt feature increases the contrast and boundary sharpness of text content for better readability. Optimisation for reading is achieved by adjusting the display's grey level scale along with white balance, brightness and contrast.

PVC-BFR free housing

This Philips monitor housing is free from brominated flame retardant and polyvinyl chloride (PVC-BFR free)



Specifications

Picture/Display

- LCD panel type: PLS LCD
- Backlight type: W-LED system
- Panel Size: 27 inch/68.6 cm
- Effective viewing area: 596.74 x 335.66 mm
- Aspect ratio: 16:9
- Optimum resolution: 2560 x 1440 @ 60Hz
- Response time (typical): 12 ms
- SmartResponse (typical): 6 ms (Grey to Grey)
- Brightness: 300 cd/m²
- Contrast ratio (typical): 1000:1
- SmartContrast: 20,000,000:1
- Pixel pitch: 0.233 x 0.233 mm
- Viewing angle: 178° (H)/178° (V), @ C/R > 10
- Picture enhancement: SmartImage
- Display colours: 16.7 M (True 8 bit)
- Scanning Frequency: 30 - 90 kHz (H) / 56 - 75 Hz (V)
- sRGB

Connectivity

- Signal Input: DVI-Dual Link (digital, HDCP), DisplayPort, HDMI x 2
- Sync Input: Separate Sync, Sync on Green
- Audio (In/Out): PC audio-in, Headphone out

Convenience

- Built-in Speakers: 2 W x 2
- Built-in webcam: 2.0 megapixel camera with microphone and LED indicator
- MultiView: PiP/PbP mode, 2 x devices
- User convenience: SmartImage, Menu, Multi-view, Power On/Off, PowerSensor
- OSD Languages: Brazil Portuguese, Czech, Dutch, English, Finnish, French, German, Greek, Hungarian, Italian, Japanese, Korean, Polish, Portuguese, Russian, Simplified Chinese, Spanish, Swedish, Traditional Chinese, Turkish, Ukrainian
- Other convenience: Kensington lock, VESA mount (100 x 100 mm)
- Plug and Play Compatibility: DDC/CI, Mac OS X, sRGB, Windows 8/7/XP

Stand

- Tilt: -5/20 degree

Power

- On mode: 38 W (EnergyStar 6.0 test method)
- Standby mode: 0.4W (typ)
- Off mode: Zero watts with Zero switch
- Power LED indicator: Operation - White, Standby mode - White (flashing)
- Power supply: 100-240 VAC, 50-60 Hz, Built-in

Dimensions

- Product with stand (mm): 639 x 495 x 197 mm
- Product without stand (mm): 639 x 405 x 64 mm
- Packaging in mm (W x H x D): 712 x 557 x 132 mm

Weight

- Product with stand (kg): 6.30 kg
- Product without stand (kg): 5.60 kg
- Product with packaging (kg): 8.40 kg

Operating conditions

- Temperature range (operation): 0°C to 40°C °C
- Temperature range (storage): -20°C to 60°C °C
- Relative humidity: 20-80% %
- Altitude: Operation: +12,000 ft (3658 m), Non-operation: +40,000 ft (12,192 m)
- MTBF: 30,000 hour(s)

Sustainability

- Environmental and energy: EnergyStar 6.0, EPEAT Silver, PowerSensor, RoHS
- Recyclable packaging material: 100 %
- Specific Substances: PVC/BFR free housing, Mercury free, Lead free

Compliance and standards

- Regulatory Approvals: BSMI, CE Mark, cETLus, FCC Class B, GOST, SASO, SEMKO, TCO 6.0, TUV Ergo, TUV/GS, WEEE

Cabinet

- Front bezel: Black
- Rear cover: Black
- Foot: Black
- Finish: Texture



Issue date 2015-03-03

Version: 8.0.1

12 NC: 8670 000 96718
EAN: 87 12581 66393 3

© 2015 Koninklijke Philips N.V.
All Rights reserved.

Specifications are subject to change without notice.
Trademarks are the property of Koninklijke Philips N.V.
or their respective owners.

www.philips.com