



Headphones

- DJ monitor style
- Black

SHL3300/00

Deep bass, defined sound

With DJ monitoring style

Engineered for uncompromised audio delivery, the SHL3300 features 40 mm neodymium drivers and is equipped for 2200 mW power - offering defined bass and precision sound with no distortion. Auto-return earshells rotate 165° for easy monitoring.

Benefits

The perfect listening experience

- 2200 mW high power handling: no distortion even at high volume
- 40 mm neodymium speaker drivers for deep and defined bass
- Closed-back system blocks out ambient noise
- Single-sided DJ monitoring style too easily tune in and out

Comfortable for long use

- Adjustable ear shells and headband fit the shape of any head
- Soft 95-mm diameter cushions for extended comfort
- Wide, lightweight headband with EVA foam for comfortable fit

Convenient and durable

- 1.5 m coiled cable for extra flexibility and durability
- Auto-return earpieces restore their original position after use
- Compact foldable design for easy storage on the go
- Tested with 8,000 cable bends for assured durability
- Earpieces swivel 165° for monitoring and added flexibility

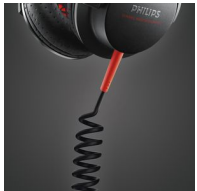
PHILIPS

Features

Adjustable ear shells headband



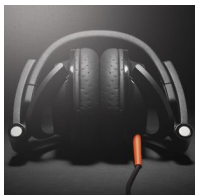
1.5 m coiled cable



Enjoy greater freedom of movement with a 1.5 m coiled cable. The coil also reduces the strain on parts caused by pulling, while providing the extra length without the mess of tangled cables.

Auto-return earpieces

Compact foldable design

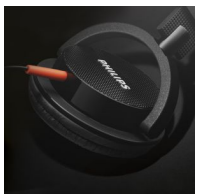


Made to give you the best experience on the go, the DJ monitoring style headphones can be folded away for perfect portability and easy storage. Clever design and careful selection of components, like the well-built hinges, allow the headphone parts to be manoeuvred with ease. The SHL3100 can be folded flat, while the higher end SHL3200 and 3300 can be folded into more compact forms.

Durable cable

Engineered for robustness and performance, these headphones promise sound experiences that won't let you down. Cable systems are developed to withstand strong tugging and repeated bending – stresses beyond those encountered in daily use. To ensure this, all cable designs undergo a rigorous test of 8,000 bends.

Earpieces swivel 165°



Designed with the professional DJ in mind, the earpieces on these headphones can each rotate 165° – for convenient one-ear listening while track mixing. The swivel can also be put to good use for more casual listening, when temporary attention has to be paid to external sounds.

2200 mW high power handling

High power handling gives you high performance – no matter what the volume, no matter what the source. Listen to all your music from MP3

players, smartphones, home audio devices and mixing boards. Even at high volumes, or with high audio input power, delivery is clear and distortion-free.

40 mm neodymium drivers

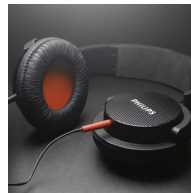


Neodymium drivers boast an outstanding frequency response that imparts crisp high tones, and bass that is effortlessly extended and defined. Sound separation is also remarkably clear, letting you hear each note at precisely the right moment – for a professional touch to track mixing, or for immersive enjoyment of favourites on the go.

Closed-back system



DJ monitoring style

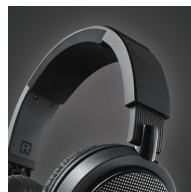


Soft 95-mm diameter cushions



Indulge in great sound no matter where you are. The 95 mm diameter soft cushions create perfect sealing between your ears and the environment, providing excellent noise isolation and enhancing bass notes. Whether you are mixing tracks at a lively party or simply enjoying favourites on your commute, the earshell cushions ensure you get the best out of your music.

Wide, lightweight headband



Everything about these headphones spells comfort – from the ergonomic design to the lightweight construction and use of superior materials. Even with extended use, the exceptional comfort lets you enjoy your music to the fullest.

Specifications

Please note that this is a pre-sales leaflet. The contents of this leaflet reflect the best of our knowledge per date and country mentioned above. The contents of this leaflet are subject to change without notice. Philips does not accept any liability as to the contents of this leaflet.

Sound

Acoustic system	closed
Frequency response	18 - 25,000 Hz
Impedance	32 Ohm
Magnet type	Neodymium
Maximum power input	2200 mW
Sensitivity	108 dB
Speaker diameter	40 mm

Connectivity

Cable Connection	one-sided
------------------	-----------

Product dimensions

Depth	9.5 cm
Height	21 cm
Weight	0.3165 kg
Width	17.5 cm

Packaging dimensions

Height	24.50 cm
Width	19.50 cm
Depth	10.50 cm
Net weight	0.32 kg
Gross weight	0.44 kg
EAN	06923410718201
Number of products included	1
Country of origin	CN

Harmonised Systems Code	851830
-------------------------	--------

Outer Carton

Length	63.00 cm
Width	21.00 cm
Height	27.50 cm
Gross weight	3.08 kg
EAN	16923410718208
Number of consumer packages	6

Loading Unit

Number of consumer packages	120
Length	105.00 cm
Width	64.00 cm
Height	110.00 cm
Gross weight	62.00 kg
Net weight	38.04 kg
GTIN/EAN	66923410718203
Type	8845
Number of CTIs per stack layer	30
Number of stack layers per unit	4
Number of outer cartons per layer	5



data subject to change
2016, November 14

Version: 4.3.5
EAN: 06923410718201

© 2016 Koninklijke Philips N.V.
All rights reserved.

Specifications are subject to change without notice. Trademarks are the property of Koninklijke Philips N.V. or their respective owners.

www.philips.com