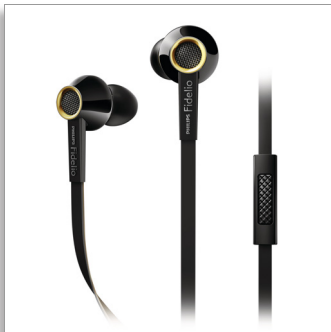


Philips Fidelio  
Headphones with mic

## High resolution audio

In-ear  
Ultra-soft silicone caps  
Flat cable



S2BK

# High fidelity, premium quality

Wherever you go

Philips Fidelio S2 headphones are precisely engineered to deliver natural, balanced sound, revealing every details as the artist intended. Amazing sound presented in a lightweight yet durable design for true comfort and pleasure on the go.

### Designed for precision

- High Resolution audio reproduces music in its purest form
- High-powered 13.5mm neodymium drivers for exceptional sound
- Layered motion control drivers for refined high frequencies
- Engineered metal housing reduces vibration and resonance
- Semi-closed back design for sound balance and bass extension

### Listen in comfort

- Ultra-soft silicone tips in 5 sizes for a custom, snug fit
- Copper alloy outer housing for lightweight durability
- Anti-scratch high gloss coating for added protection
- 2 Comply™ Foam Tips for comfy fit and noise isolation
- Ergonomic earphones fit perfectly while dispersing pressure

### Created for convenience

- Switch between music and calls with in-line control and mic
- Protective pouch to store your headphones when not in use



2014



**PHILIPS**  
Fidelio

Headphones with mic  
High resolution audio In-ear, Ultra-soft silicone caps, Flat cable

S2BK/00

# Highlights

## 13.5mm neodymium drivers



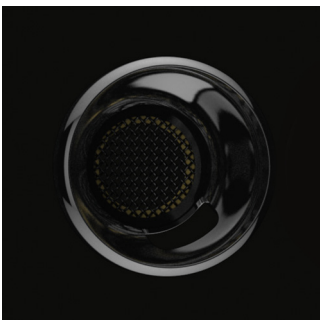
Each speaker driver is carefully hand picked, tuned and tested before being paired to ensure delivery of the most balanced, natural sound. The 13.5mm drivers utilize high power neodymium magnets to deliver deep bass impact, transparent mid-range and refined high frequencies.

## 5 sizes of soft silicone tips



The Fidelio S2 in-ear headphones come with 5 pairs of acoustically sealed silicone tips to ensure a snug fit as well as longer wearing comfort.

## Copper alloy outer housing



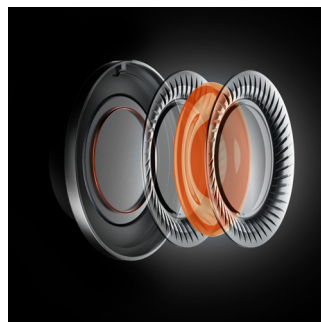
Copper alloy outer housing for lightweight durability

## High gloss coating



The ergonomically designed earshell is protected by a high-gloss finish in classic piano-black lacquer finish, which not only imparts a premium look and feel but also durability and resistance to scratches. The protective coating makes the earphones easy to clean and even easier to bring along with you anywhere you go. Just a wipe and they'll look as good as new.

## Layered motion control drivers



Layered Motion Control (LMC) drivers feature a multi-layered polymer diaphragm that encases a layer of damping gel. Unlike traditional single-layer drivers at higher audio frequencies that are rigid and reproduce uncontrolled and unnatural timbre, our LMC driver's multiple layers form a non-rigid boundary to hold a layer of gel in shape. The gel absorbs and dampens any exaggerated energies, resulting in a smooth and flatter frequency response, and therefore more balanced, natural and refined high frequency range.

## In-line control and mic

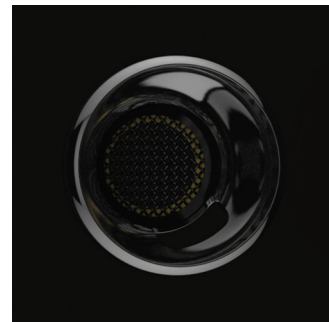


The Fidelio S2 in-ear headphones feature an in-line remote and microphone so you can switch easily between your music and calls. Stay connected with important people – and your music, always.

## 2 pairs of Comply™ Foam Tips

Enhance your listening experience with the bypacked Comply™ Foam Tips, which comes in 2 custom options. The snug S-series tips provide stay-in-place fit coupled with amazing all-day comfort, while the Ts-series ensure excellent noise insulation, allowing you to tune out from the world and into your music.

## Engineered metal housing



The metal housing is meticulously engineered to reduce resonance and vibration, delivering authentically precise sound marked by incredible sound detail.

# Specifications

## Sound

- Frequency response: 5- 40 000 Hz
- Sensitivity: 107 dB
- Speaker diameter: 13.5 mm
- Maximum power input: 40 mW
- Impedance: 22 ohm
- Acoustic system: Semi-closed

## Accessories

- Storage pouch

## Connectivity

- Cable Connection: 3.5mm 4 pole (1.2M)
- Compatible with:: iPhone®, BlackBerry®, HTC, LG, MOTOROLA, Sony, Nokia\*, SAMSUNG\*.  
\*Extra connector available through customer support for Sony Ericsson, older models from NOKIA and SAMSUNG



Issue date 2015-09-04

Version: 4.2.7

12 NC: 8670 000 97384  
EAN: 69 23410 71930 7

© 2015 Koninklijke Philips N.V.  
All Rights reserved.

Specifications are subject to change without notice.  
Trademarks are the property of Koninklijke Philips N.V.  
or their respective owners.

[www.philips.com](http://www.philips.com)