

# PHILIPS

## sonicare

Standard sonic  
toothbrush heads

e-Series

3-pack

HX7003/60



## Classic Clean

### Screw-on electric toothbrush head

The Philips Sonicare HX7003/60 e-Series brush heads are visibly angled for better reach within the mouth, providing a thorough every day clean, while massaging and stimulating gums.

#### **A brush head that fits multiple handles**

- Screw-on brush head for our original Sonicare handles

#### **Easy to maneuver to focus on hard-to-reach areas**

- Unique angled neck helps you reach back teeth

#### **Designed to optimize performance**

- Reminder bristles ensure you are getting an effective clean

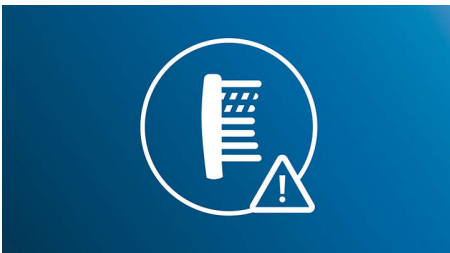
# Highlights

## Screw-on brush head



Screw-on brush head that will fit our original Sonicare handles

## Reminder bristles



Reminder bristles let's you know when to replace the brush head. After three months of normal use bristles exhibit fatigue, and brush heads are less effective. Replace your brush heads every 3 months.

## Unique angled neck



The slim angled neck enables you to easily maneuver the toothbrush head, particularly in hard-to-reach areas to remove plaque.

# Specifications

## Technical specifications

**Operating time:** For optimal results, a new brush head is recommended every three months.

**Replacement:** Reminder Bristles fade when a replacement is needed.

## Weight and dimensions

**Dimensions brush head packaging:** 21.6 h x 6.5 w x 4.1 d cm

**Weight brush head packaging:** 0.132 kg

## Ease of use

**Suitable for these models:** Elite, Essence, CleanCare, Xtreme, Advance

