

Register your product and get support at
www.philips.com/welcome



User manual

PHILIPS

Contents

1 Important	2
Safety	2
Notice	3

2 Your Mini Hi-Fi System	5
Introduction	5
What's in the box	5
Overview of the main unit	6
Overview of the remote control	7

3 Get started	9
Connect FM antenna	9
Connect AM antenna	9
Connect speakers	9
Connect power	10
Connect an iPod / iPhone dock	10
Prepare the remote control	10
Auto install radio stations	11
Set clock	11
Turn on	11

4 Play	12
Play disc	12
Play from USB	12

5 Listen to an external device	13
Listen to an MP3 player	13
Listen to a PC	13
Listen to iPod/iPhone	13

6 Play options	14
Repeat and random play	14
Program tracks	14
Display play information	14

7 Adjust volume level and sound effect	15
Adjust volume level	15
Mute sound	15
Boost loudness	15
Select a preset sound effect	15
Enhance bass	15
Virtual surround	15
Customize sound for room acoustics	15

8 Listen to radio	17
Tune to a radio station	17
Program radio stations manually	17
Select a preset radio station	17
Change AM tuning grid	17

9 USB record	18
Record to USB	18
Record CDDA contents to USB at any playback time	18
Schedule radio-to-USB record	18

10 Other features	20
Set the alarm timer	20
Set the sleep timer	20
Karaoke	20

11 Product information	21
Specifications	21
USB playability information	21
Supported MP3 disc formats	22
Maintenance	22

12 Troubleshooting	23
---------------------------	----

1 Important

Safety



This 'bolt of lightning' indicates uninsulated material within your unit may cause an electrical shock. For the safety of everyone in your household, please do not remove product covering.

The 'exclamation point' calls attention to features for which you should read the enclosed literature closely to prevent operating and maintenance problems.

WARNING: To reduce the risk of fire or electric shock, this apparatus should not be exposed to rain or moisture and objects filled with liquids, such as vases, should not be placed on this apparatus.

CAUTION: To prevent electric shock, match wide blade of plug to wide slot, fully insert.

- ① Read these instructions.
- ② Keep these instructions.
- ③ Heed all warnings.
- ④ Follow all instructions.
- ⑤ Do not use this apparatus near water.
- ⑥ Clean only with dry cloth.
- ⑦ Do not block any ventilation openings. Install in accordance with the manufacturer's instructions.
- ⑧ Do not install near any heat sources such as radiators, heat registers, stoves, or

other apparatus (including amplifiers) that produce heat.

- ⑨ Protect the power cord from being walked on or pinched, particularly at plugs, convenience receptacles, and the point where they exit from the apparatus.
- ⑩ Only use attachments/accessories specified by the manufacturer.
- ⑪ Use only with the cart, stand, tripod, bracket, or table specified by the manufacturer or sold with the apparatus. When a cart is used, use caution when moving the cart/apparatus combination to avoid injury from tip-over.



- ⑫ Unplug this apparatus during lightning storms or when unused for long periods of time.
- ⑬ Refer all servicing to qualified service personnel. Servicing is required when the apparatus has been damaged in any way, such as power-supply cord or plug is damaged, liquid has been spilled or objects have fallen into the apparatus, the apparatus has been exposed to rain or moisture, does not operate normally, or has been dropped.
- ⑭ **Battery usage CAUTION** – To prevent battery leakage which may result in bodily injury, property damage, or damage to the unit:
 - Install all batteries correctly, + and - as marked on the unit.
 - Do not mix batteries (old and new or carbon and alkaline, etc.).
 - Remove batteries when the unit is not used for a long time.

- ⑮ Apparatus shall not be exposed to dripping or splashing.
- ⑯ Do not place any sources of danger on the apparatus (e.g. liquid filled objects, lighted candles).
- ⑰ This product may contain lead and mercury. Disposal of these materials may be regulated due to environmental considerations. For disposal or recycling information, please contact your local authorities or the Electronic Industries Alliance: www.eiae.org.
- ⑱ Where the MAINS plug or an appliance coupler is used as the disconnect device, the disconnect device shall remain readily operable.



Warning

- Never remove the casing of this apparatus.
- Never lubricate any part of this apparatus.
- Never place this apparatus on other electrical equipment.
- Keep this apparatus away from direct sunlight, naked flames or heat.
- Never look into the laser beam inside this apparatus.
- Ensure that you always have easy access to the power cord, plug or adaptor to disconnect this apparatus from the power.

Hearing safety

Listen at a moderate volume.

- Using headphones at a high volume can impair your hearing. This product can produce sounds in decibel ranges that may cause hearing loss for a normal person, even for exposure less than a minute. The higher decibel ranges are offered for those that may have already experienced some hearing loss.
- Sound can be deceiving. Over time your hearing 'comfort level' adapts to higher volumes of sound. So after prolonged listening, what sounds 'normal' can actually be loud and harmful to your hearing. To

guard against this, set your volume to a safe level before your hearing adapts and leave it there.

To establish a safe volume level:

- Set your volume control at a low setting.
- Slowly increase the sound until you can hear it comfortably and clearly, without distortion.

Listen for reasonable periods of time:

- Prolonged exposure to sound, even at normally 'safe' levels, can also cause hearing loss.
- Be sure to use your equipment reasonably and take appropriate breaks.

Be sure to observe the following guidelines when using your headphones.

- Listen at reasonable volumes for reasonable periods of time.
- Be careful not to adjust the volume as your hearing adapts.
- Do not turn up the volume so high that you can't hear what's around you.
- You should use caution or temporarily discontinue use in potentially hazardous situations. Do not use headphones while operating a motorized vehicle, cycling, skateboarding, etc.; it may create a traffic hazard and is illegal in many areas.



Caution

- Use of controls or adjustments or performance of procedures other than herein may result in hazardous radiation exposure or other unsafe operation.

Notice

Any changes or modifications made to this device that are not expressly approved by Philips Consumer Lifestyle may void the user's authority to operate the equipment.



The making of unauthorized copies of copy-protected material, including computer programs, files, broadcasts and sound recordings, may be an infringement of copyrights and constitute a criminal offence. This equipment should not be used for such purposes.

Environmental information

All unnecessary packaging has been omitted. We have tried to make the packaging easy to separate into three materials: cardboard (box), polystyrene foam (buffer) and polyethylene (bags, protective foam sheet.) Your system consists of materials which can be recycled and reused if disassembled by a specialized company. Please observe the local regulations regarding the disposal of packaging materials, exhausted batteries and old equipment.

This apparatus includes this label:



Note

- The type plate is located on the back of the unit.

2 Your Mini Hi-Fi System

Congratulations on your purchase, and welcome to Philips! To fully benefit from the support that Philips offers, register your product at www.Philips.com/welcome.

Introduction

With this unit, you can enjoy audio from discs, USB devices, iPod/iPhone, external devices, or radio stations.

For your convenience, you can load up to three discs at once.

To enrich sound, this unit offers you these sound effects:

- MAX sound for instant power boost
- Digital Sound Control (DSC)
- Dynamic Bass Boost (DBB)
- Incredible surround (IS)
- Virtual Ambience-based Control (VAC)

The unit supports the following media formats:

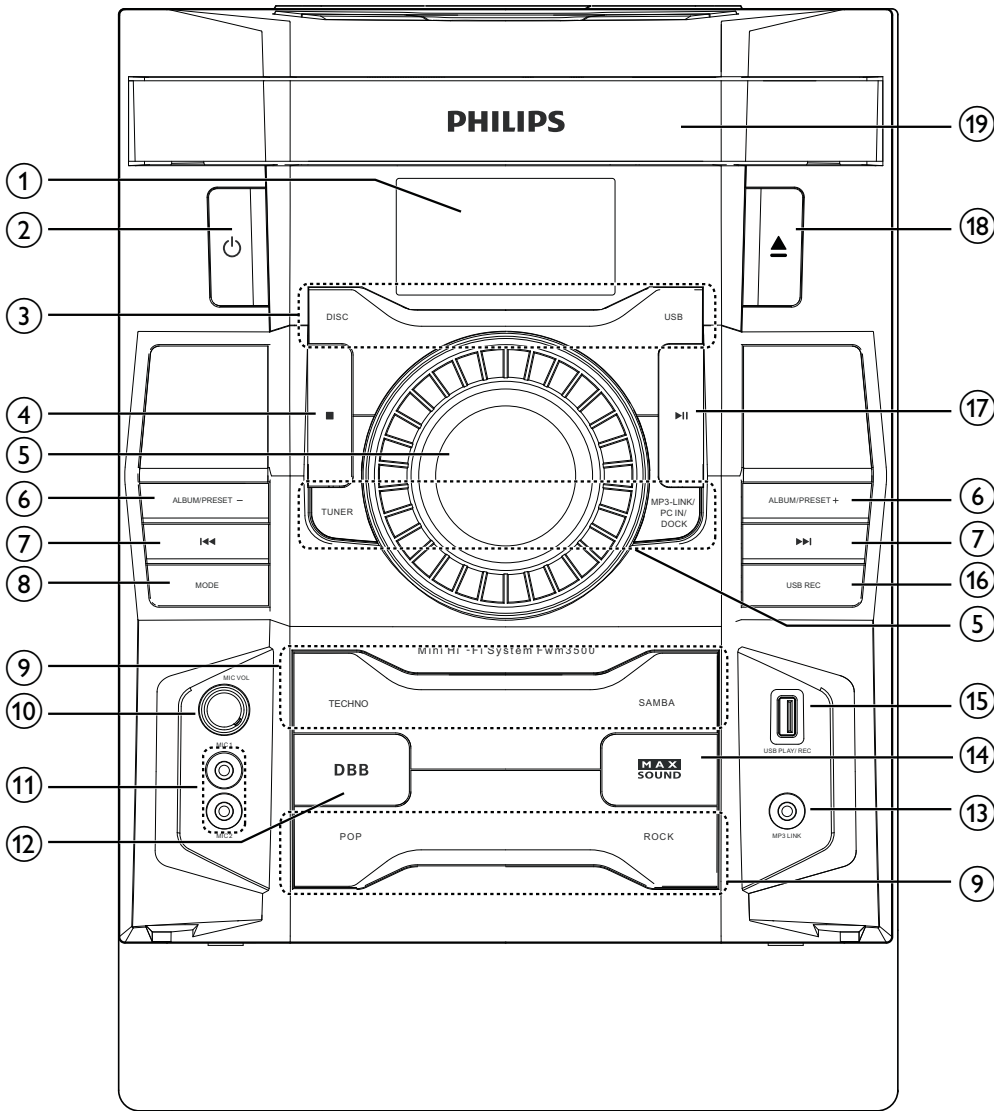


What's in the box

Check and identify the contents of your package:

- Main unit x 1
- Loudspeaker box x 2
- Remote control x 1
- AAA battery X 2
- FM wire antenna x 1
- AM loop antenna x 1
- MP3 link cable x 1
- Quick start guide
- User manual

Overview of the main unit



① Display panel

- Show current status.

②

- Turn on the unit or switch to standby mode.

③ Source selection keys

- Select a source.

④

- Stop play or erase a program.

⑤ VOLUME

- Adjust volume.

⑥ ALB/PRESET +/-

- Skip to the previous/next album.
- Select a preset radio station.

⑦

- Skip to the previous/next track.
- Search within a track/ disc/USB.
- Tune to a radio station.

⑧ MODE

- Select repeat play or random play.

⑨ DSC

- Select a preset sound equalizer setting.

⑩ MICVOL

- Adjust microphone volume.

⑪ Microphone port

- Jack for a microphone.

⑫ DBB

- Turn on or off dynamic bass enhancement.

⑬ MP3 LINK

- Audio input jack (3.5mm) for an external audio device.

⑭ MAX SOUND

- Turn on or off instant power boost for sound.

⑮ USB PLAY/REC

- Connect to a USB mass storage device.

⑯ USB REC

- Record to a USB device.

⑰ ►||

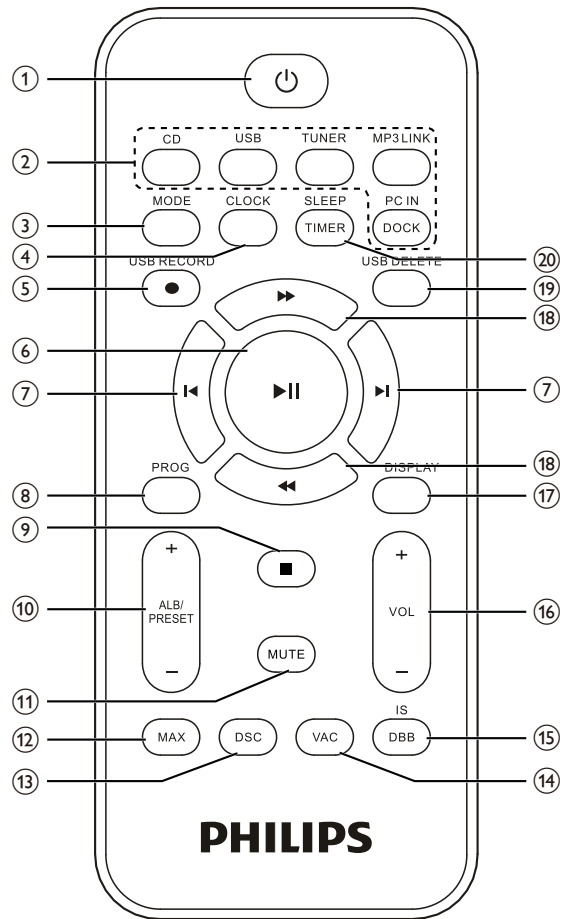
- Start or pause play.

⑱ ▲

- Open or close the disc compartment.

⑲ Disc compartment door

Overview of the remote control



①

- Turn on the unit, or switch to standby mode.

② Source selection keys

- Select a source.

③ MODE

- Select repeat play or random play.

④ CLOCK

- Set the clock.
- View the clock.

⑤ USB RECORD

- Record to a USB device.

⑥ ►||

- Start or pause play.

⑦ **⏮ / ⏭**

- Skip to the previous/next track.

⑧ **PROG**

- Program tracks.
- Program radio stations.

⑨ **■**

- Stop play or erase a program.

⑩ **ALB/PRESET +/-**

- Skip to the previous/next album.
- Select a preset radio station.

⑪ **MUTE**

- Mute volume.

⑫ **MAX**

- Turn on or off instant power boost for sound.

⑬ **DSC**

- Select a preset sound equalizer.

⑭ **VAC**

- Select an ambience-based equalizer setting.

⑮ **DBB/IS**

- Turn on or off dynamic bass enhancement.
- Turn on or off incredible surround.

⑯ **VOL +/-**

- Adjust volume.

⑰ **DISPLAY**

- Select display information.

⑱ **⏪ / ⏩**

- Adjust radio frequency.
- Fast backward or fast forward.

⑲ **USB DELETE**

- Delete audio files stored on a USB storage device.

⑳ **SLEEP/TIMER**

- Set the sleep timer.
- Set the alarm timer.
- Turn on or off sleep/alarm timer.

3 Get started

! Caution

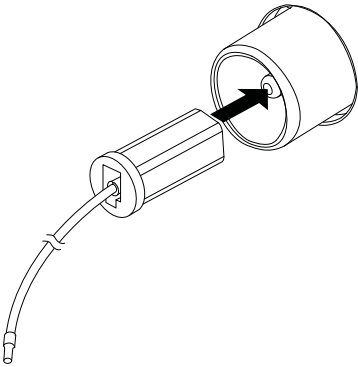
- Use of controls or adjustments or performance of procedures other than herein may result in hazardous radiation exposure or other unsafe operation.

Always follow the instructions in this chapter in sequence.

If you contact Philips, you will be asked for the model and serial number of this apparatus. The model number and serial number are on the back of the apparatus. Write the numbers here:
Model No. _____
Serial No. _____

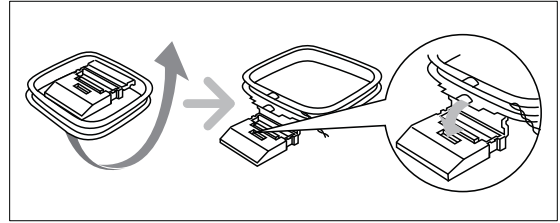
Connect FM antenna

Connect the supplied FM antenna to the **FM** jack on the back of the main unit.

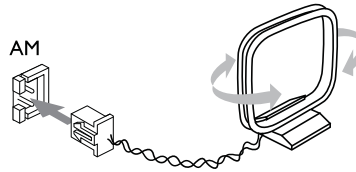


Connect AM antenna

1 Assemble the AM loop antenna.



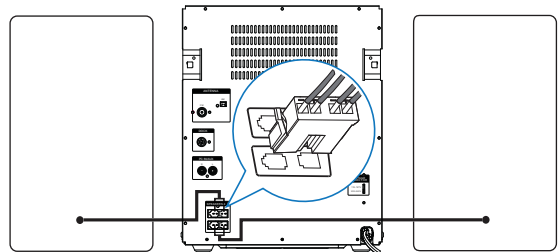
2 Connect the AM loop antenna to the **AM** jack on the back of the main unit.



Connect speakers

≡ Note

- For optimal sound, use the supplied speakers only.
- Connect only speakers with impedance that is the same or higher than the supplied speakers. Refer to the Specifications section of this manual.

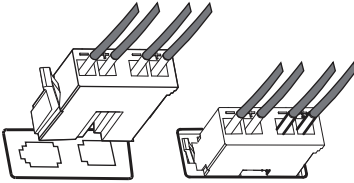


≡ Note

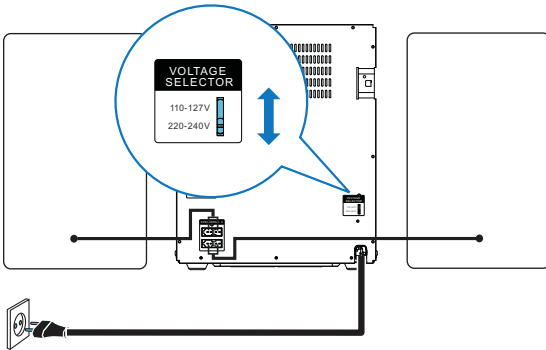
- Make sure that the colors of the speaker wires and terminals are matched.

Insert the wire completely.

- Insert the right speaker wires to "**R**", and left speaker wires to "**L**".



Connect power

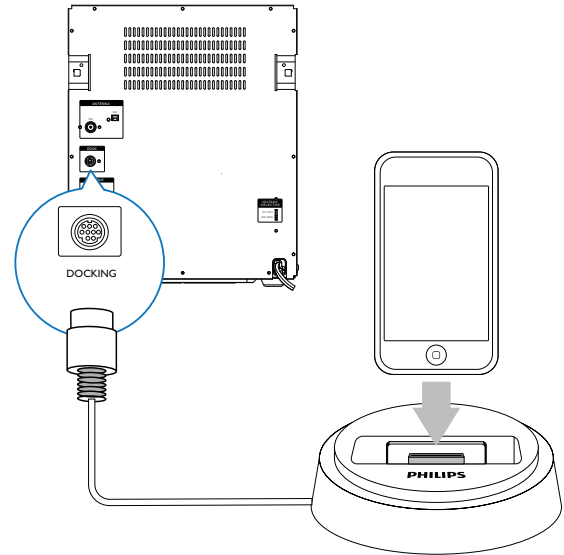


! Caution

- Risk of product damage! Make sure that the power supply voltage corresponds to the voltage set on the voltage selector on the back of the unit.
- Before connecting to the AC power, make sure that you have completed all other connections.

- 1 If your power supply voltage is 110V-127V, adjust the voltage selector to 110V-127V.
- 2 Connect the AC power plug to the power outlet.

Connect an iPod / iPhone dock



With the connected iPod / iPhone dock, you can charge or listen to music from your iPod / iPhone through this unit.

- Connect a dock (not supplied) to the **DOCK** socket on this unit.

* Tip

- To listen to music from the docked iPod / iPhone, first press **DOCK** to select the dock source.

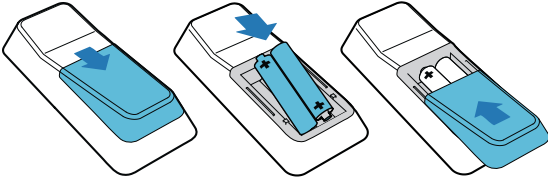
Prepare the remote control

≡ Note

- Risk of explosion! Keep batteries away from heat, sunshine or fire. Never discard batteries in fire.
- Danger of explosion if battery is incorrectly replaced. Replace only with the same or equivalent type.

To replace the remote control battery:

- 1 Open the battery compartment.
- 2 Insert two AAA batteries (not supplied) with correct polarity (+/-) as indicated.
- 3 Close the battery compartment.



Note

- If you are not going to use the remote control for a long time, remove the batteries.
- Do not use old and new or different types of batteries in combination.
- Batteries contain chemical substances, so they should be disposed of properly.

Auto install radio stations

When you connect power and no radio stations are stored, the unit automatically begins to store radio stations.

- 1 Connect the unit to the power supply.
 - ↳ [AUTO INSTALL - PRESS PLAY] (auto install - press the PLAY button) is displayed.
- 2 Press **▶||** on the main unit to start installation.
 - ↳ [AUTO] (auto) is displayed.
 - ↳ The unit automatically stores radio stations with sufficient signal strength.
 - ↳ When all the available radio stations are stored, the first preset radio station is broadcast automatically.

Set clock

- 1 In the standby mode, press **CLOCK** to activate the clock setting mode.
 - ↳ The 12 hour or 24 hour format is displayed.
- 2 Press **ALB/PRESET+/-** repeatedly to select 12 hour or 24 hour format.

- 3 Press **CLOCK** to confirm.
 - ↳ The clock digits are displayed and begin to blink.
- 4 Press **ALB/PRESET+/-** to set the hour.
- 5 Press **◀/▶** to set the minute.
- 6 Press **CLOCK** to confirm.

Tip

- To view the clock during play, press **CLOCK**.

Turn on

Press **⏻**.

- ↳ The unit switches to the last selected source.

Switch to standby

Press **⏻** to switch the unit to standby mode.

- ↳ The backlight on the display panel turns off.
- ↳ The clock (if set) appears on the display panel.

4 Play

Note

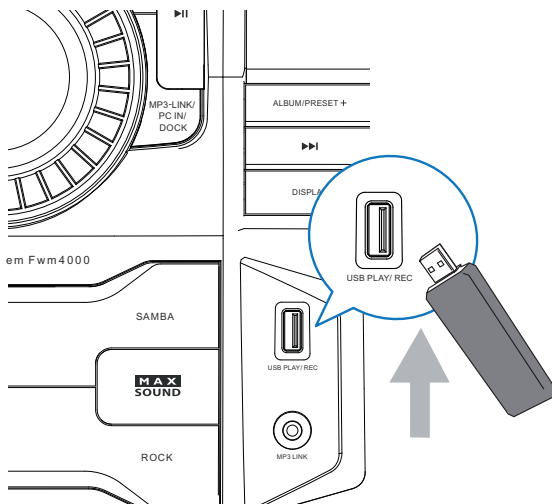
- Ensure that the USB device contains playable audio contents for supported formats.

Play disc

- 1 Press **CD** to select the disc source.
- 2 Press **▲** on the main unit to open the disc compartment.
- 3 Load a disc on the disc tray, with the printed side facing up.
- 4 Press **▲** on the main unit to close the disc compartment.
 - ↳ Play starts automatically.
 - To pause/resume play, press **▶||**.
 - To stop play, press **■**.
 - To select another track, press **◀/▶**.
 - To select an album, press **ALB/PRESET+/-**.
 - To search within a track, press and hold **◀◀/▶▶**, then release to resume normal play.

- 1 Plug the USB device into the **USB PLAY/REC** socket of this unit.
- 2 Press **USB** to select the USB source.
- 3 Press **ALB/PRESET+/-** to select a folder.
- 4 Press **◀/▶** to select an audio file.
- 5 If the USB device doesn't play, press **▶||**.
 - To pause/resume play, press **▶||**.
 - To stop play, press **■**.
 - To search within an audio file, press and hold **◀◀/▶▶**, then release to resume normal play.

Play from USB



5 Listen to an external device

You can listen to an external audio device through the speakers of this unit.

Listen to an MP3 player

- 1 Press **MP3 LINK** to select the MP3 source.
- 2 Connect the supplied MP3 link cable to:
 - the **MP3 LINK** jack (3.5mm) on the unit.
 - the headphone jack on the MP3 player.
- 3 Start to play the device (refer to the device user manual).

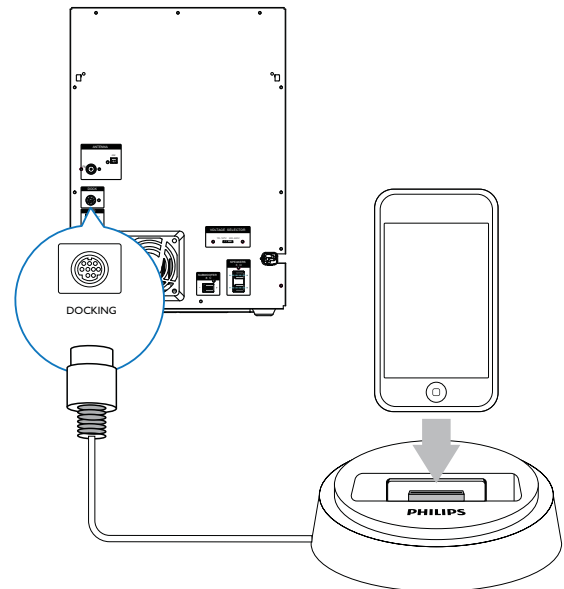
Listen to a PC

You can connect a PC or other audio devices.

- 1 Press **PC IN/DOCK** repeatedly to select the PC (Aux) source.
- 2 Connect the audio cables (white/red, not supplied) to:
 - the **PC IN** jacks (white/red) on the unit.
 - the headphone jack on the PC, or **AUDIO OUT** jacks on an external device.
- 3 Start to play the device (refer to the device user manual).

Listen to iPod/iPhone

- 1 Press **PC IN/DOCK** repeatedly to select the dock source.
- 2 Connect a Philips branded dock (modeled: DCK3060, sold separately) to the **DOCK** jack on the back of this unit.
 - Then dock your iPod or iPhone onto the dock.








- 3 Start to play the device (refer to the iPod/iPhone user manual).

6 Play options

Display play information

During play, press **DISPLAY** repeatedly to select different play information.

Repeat and random play

- 1 Press **MODE** repeatedly to select:
 -  : the current track is played repeatedly.
 -  ALL : all tracks are played repeatedly.
 -   ALL : all tracks are played randomly and repeatedly.
 -  : all tracks are played randomly.
- 2 To return to normal play, press **MODE** repeatedly until play mode is no longer displayed.



Tip

- Shuffle play cannot be selected when you play programmed tracks.

Program tracks

You can program a maximum of 40 tracks.

- 1 At CD/USB mode, in the stop position, press **PROG** to activate the program mode.
 - ↳ [PROG] (program) is displayed.
- 2 For MP3 tracks, press **ALB/PRESET+/-** to select an album.
- 3 Press **◀ / ▶** to select a track number, then press **PROG** to confirm.
- 4 Repeat steps 2 to 3 to select and store all tracks to program.
- 5 Press **▶||** to play the programmed tracks.
 - ↳ During play, [PROG] (program) is displayed.
 - To erase the program, in the stop position, press **■**.

7 Adjust volume level and sound effect

Note

- MAX sound and DSC (Digital Sound Control) cannot be activated at the same time.

Adjust volume level

Caution

- For your hearing health and being consideration of other people, it is not recommended to listen at high volume levels for a long time.

During play, press **VOL +/-** to increase/decrease the volume level.

Mute sound

During play, press **MUTE** to mute/unmute sound.

Boost loudness

MAX gives an instant boost to the sound power .
Press **MAX** to turn on or off the instant power boost.

- ↳ If MAX sound is activated, **MAX** is displayed.

Select a preset sound effect

The DSC (Digital Sound Control) enables you to enjoy special sound effects.

During play, press **DSC** repeatedly to select:

- [ROCK] (rock)
- [SAMBA] (samba)
- [JAZZ] (jazz)
- [POP] (pop)
- [TECHNO] (techno)

Enhance bass

The best DBB (Dynamic Bass Enhancement) setting is generated automatically for each DSC selection. You can manually select the DBB setting that best suits your listening environment.

During play, press **DBB** repeatedly to select:

- DBB 1
 - DBB 2
 - DBB 3
 - DBB off
- ↳ If DBB is activated, **DBB** is displayed.

Virtual surround

You can enhance audio with a virtual surround sound effect.

Press and hold **DBB/IS** to turn on or off the incredible surround.

- ↳ If the incredible surround is activated, [INC SURR] (incredible surround) is displayed.

Customize sound for room acoustics

During play, press **VAC** repeatedly to select a type of listening environment:

- [HALL] (hall)

- [CONCERT] (concert)
- [CINEMA] (cinema)

8 Listen to radio

Tune to a radio station

- 1 Press **TUNER** repeatedly to select FM or AM.
- 2 Press and hold **◀◀ / ▶▶** for more than 2 seconds.
 - ↳ [SEARCH] (search) is displayed.
 - ↳ The radio tunes to a station with strong reception automatically.
- 3 Repeat step 2 to tune to more stations.
 - To tune to a weak station, press **◀◀ / ▶▶** repeatedly until you find optimal reception.

Program radio stations manually

You can program a maximum of 40 (FM + AM) preset radio stations.

- 1 Tune to a radio station.
- 2 Press **PROG** to activate program mode.
 - ↳ [PROG] (program) is displayed.
- 3 Press **ALB/PRESET+/-** to allocate a number to this radio station, then press **PROG** to confirm.
- 4 Repeat the above steps to program other stations.



Tip

- To overwrite a programmed station, store another station in its place.

Select a preset radio station

In tuner mode, press **ALB/PRESET+/-** to select a preset number.



Tip

- Position the antenna as far as possible from TV,VCR or other radiation source.
- For optimal reception, fully extend and adjust the position of the antenna.

Change AM tuning grid

In some countries, the AM radio frequency step between adjacent channels is 10 kHz (9 kHz in some areas).

- 1 Select the tuner source.
- 2 Press and hold **■** on the main unit for more than 5 seconds.
 - ↳ The frequency step is changed to 9 kHz or 10 kHz.
 - ↳ All preset stations are erased and re-programmed on the AM mode.

9 USB record

Audio CD tracks, MP3 files, radio and audio from external devices are recorded in .mp3 format.

The first time you record to USB, a folder called 'PHILIPS' is automatically created in the USB device. Each time you record to USB, the recorded files are stored in a sub-folder in the 'PHILIPS' folder. Files and sub-folders are named numerically in the order in which they are created.

Record to USB

- 1 Plug the USB device into the **USB PLAY/REC** socket of this unit.
- 2 Prepare the source to record from.
 - Disc - Select the disc source and load a disc. You can select a track from which a recording starts.
 - Radio - Tune to a radio station.
 - MP3 LINK/PC IN - Select the MP3 link/PC IN source, then connect and start to play an external device.
- 3 Press **USB RECORD** to start recording.
 - For discs, press **USB RECORD** repeatedly to select:
 - (A) [REC ONE] (record one): the first/current track is recorded.
 - (B) [REC ALL] (record all): all tracks/the remaining tracks are recorded.
 - ↳ Disc play starts automatically from the beginning of the disc/the selected track, and the recording starts.
 - To stop recording, press ■.

Note

- If the USB device does not have enough memory to store the audio files, a message about a full memory is displayed.

Record CDDA contents to USB at any playback time

Note

- Make sure that the USB storage device is connected to the main unit.

To record the CDDA content into a USB storage device at any playback time:

- 1 Press **USB RECORD** during CDDA playback.
 - ↳ The recording starts.
- 2 Press ■ to stop recording.

Tip

- If the USB storage device does not have enough memory to store the audio files, a message about a full memory is displayed.
- Anytime recording is not available for CD-MP3 discs.
- Anytime recording is not available for High speed recording.

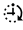
Schedule radio-to-USB record

Schedule radio recordings in advance and you can listen to your favorite programs at your convenience.

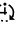

Note

- A recording is activated only in the standby mode.
- The maximum length of a recording is 12 hours.

- 1 Ensure that you set the clock correctly.
- 2 Plug the USB device into the **USB PLAY/REC** socket of this unit.
- 3 Tune to a radio station.
- 4 Press ⏻ to switch to standby mode.

- 5 Press and hold **SLEEP/TIMER** for more than 2 seconds.
 - ↳ A prompt to select the source is displayed.
- 6 Press **TUNER** repeatedly to select FM or AM.
- 7 Press **USB RECORD**.
 - ↳ The start timer digits are displayed and begin to blink.
- 8 Press **ALB/PRESET+/-** to set the hour.
- 9 Press **◀ / ▶** to set the minute.
- 10 Press **SLEEP/TIMER** to confirm.
 - ↳ The end timer digits are displayed and begin to blink.
- 11 Press **ALB/PRESET+/-** to set the hour.
- 12 Press **◀ / ▶** to set the minute.
- 13 Press **SLEEP/TIMER** to confirm.
 - ↳  is displayed.
 - ↳ At the scheduled times, the recording begins and ends automatically.
 - ↳ When the recording ends, the unit switches to standby mode.

To deactivate or re-activate a record timer

- 1 In the standby mode, press **SLEEP/TIMER** repeatedly.
 - ↳ If the timer is activated,  is displayed.
 - ↳ If the timer is deactivated,  disappears.

10 Other features

Set the alarm timer

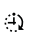

This unit can be used as an alarm clock. The disc, radio or USB is activated to play at a preset time.

Note

- If you have set a record timer and an alarm timer, only the latest timer is activated.

- 1 Ensure that you have set the clock correctly.
- 2 Press **⏻** to switch to standby mode.
- 3 Press and hold **SLEEP/TIMER** for more than 2 seconds.
 - ↳ A prompt to select the source is displayed.
- 4 Press **CD**, or **TUNER** or **USB** to select a source.
- 5 Press **SLEEP/TIMER** to confirm.
 - ↳ The clock digits are displayed and begin to blink.
- 6 Press **ALB/PRESET +/-** to set the hour.
- 7 Press **◀ / ▶** to set the minute.
- 8 Press **SLEEP/TIMER** to confirm.
 - ↳ The timer is set and activated.

To deactivate or re-activate an alarm timer

- 1 In the standby mode, press **SLEEP/TIMER** repeatedly.
 - ↳ If the timer is activated,  is displayed.
 - ↳ If the timer is deactivated,  disappears.

Tip

- In MP3 link or AUX mode, the alarm timer cannot be set.
- If disc or USB source is selected but no audio file can be played, radio is activated automatically.

Set the sleep timer

This unit can switch to standby automatically after a set period of time.

- 1 When the unit is turned on, press **SLEEP/TIMER** repeatedly to select a set period of time (in minutes).
 - ↳ When sleep timer is activated, **zZ** is displayed.

To deactivate sleep timer

- 1 Press **SLEEP/TIMER** repeatedly until **[OFF]** (off) is displayed.
 - ↳ When sleep timer is deactivated, **zZ** disappears on the display.

Karaoke

You can connect a microphone and sing along with a music source.

- 1 Turn **MIC VOL** to the minimum level.
- 2 Connect a microphone to the microphone port on the unit.
- 3 Press **CD**, or **TUNER**, or **USB**, or **MP3 LINK**, or **PC IN/DOCK** to select the source, and start play.
- 4 Sing through the microphone.
 - To adjust the volume of the source, press **VOL +/-**.
 - To adjust the volume of the microphone, turn **MIC VOL**.

11 Product information

Note

- Product information is subject to change without prior notice.

Specifications

Amplifier

Total output power	4 X 75W RMS
Frequency response	60 Hz - 16kHz
Signal-to- noise ratio	>65 dBA
Aux input	1500mV/2000mV

Disc

Laser type	Semiconductor
Disc diameter	12cm/8cm
Support disc	CD-DA, CD-R, CD-RW, MP3-CD
Audio DAC	24Bits / 44.1kHz
Total harmonic distortion	<1%
Frequency response	60Hz -16kHz (44.1kHz)
S/N ratio	>70dBA

Tuner

Tuning range	FM: 87.5 - 108MHz; AM: 531 - 1602kHz (9KHz); 530 - 1700KHz (10KHz)
Tuning grid	100KHz (FM); 9KHz/10KHz (AM)
Number of presets	40 (FM + AM)

FM	75ohm wire
AM	loop antenna

Speakers

Speaker Impedance	4ohm
Woofer	2 x 6.5"
Tweeter	2 x 1.75"
Dimensions (L x H x D)	232 x 372 x 307 mm
Weight	7.6 kg / 2 pcs

General information-Specs

AC power	110 - 127/220 - 240V, 50/60Hz
Operation power consumption	130 W
Standby power consumption	<25W
USB direct	Version 2.0/1.1
Dimensions Main Unit (W x H x D)	265 x 322 x 380mm
Weight (without speakers)	6.43 kg

USB playability information

Compatible USB devices:

- USB flash memory (USB 2.0 or USB 1.1)
- USB flash players (USB 2.0 or USB 1.1)
- memory cards (requires an additional card reader to work with this unit)

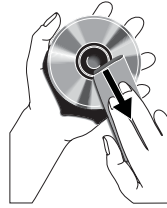
Supported formats:

- USB or memory file format FAT12, FAT16, FAT32 (sector size: 512 bytes)
- MP3 bit rate (data rate): 32-320 Kbps and variable bit rate
- Directory nesting up to a maximum of 8 levels
- Number of albums/ folders: maximum 99
- Number of tracks/titles: maximum 999

- ID3 tag v2.0 or later
- File name in Unicode UTF8 (maximum length: 128 bytes)

Unsupported formats:

- Empty albums: an empty album is an album that does not contain MP3/WMA files, and is not be shown in the display.
- Unsupported file formats are skipped. For example, Word documents (.doc) or MP3 files with extension .dlf are ignored and not played.
- AAC, WAV, PCM audio files
- DRM protected WMA files (.wav, .m4a, .m4p, .mp4, .aac)
- WMA files in Lossless format



- Do not use solvents such as benzene, thinner, commercially available cleaners, or antistatic spray intended for analogue records.

Clean the disc lens

- After prolonged use, dirt or dust may accumulate at the disc lens. To ensure good play quality, clean the disc lens with Philips CD lens cleaner or any commercially available cleaner. Follow the instructions supplied with cleaner.

Supported MP3 disc formats

- ISO9660, Joliet
- Maximum title number: 999 (depending on file name length)
- Maximum album number: 99
- Supported sampling frequencies: 32 kHz, 44.1kHz, 48 kHz
- Supported Bit-rates: 32-320 (kbps), variable bit rates
- ID3 tag v2.0 or later
- Directory nesting up to a maximum of 8 levels

Maintenance

Clean the cabinet

- Use a soft cloth slightly moistened with a mild detergent solution. Do not use a solution containing alcohol, spirits, ammonia or abrasives.

Clean discs

- When a disc becomes dirty, clean it with a cleaning cloth. Wipe the disc from the centre out.

12 Troubleshooting



Warning

- Never remove the casing of this apparatus.

To keep the warranty valid, never try to repair the system yourself.

If you encounter problems when using this apparatus, check the following points before requesting service. If the problem remains unsolved, go to the Philips web site (www.philips.com/welcome). When you contact Philips, ensure that the apparatus is nearby and the model number and serial number are available.

No power

- Ensure that the AC power plug of the unit is connected properly.
- Ensure that there is power at the AC outlet.
- To save power, the unit switches to standby automatically 15 minutes after a play reaches the end and no control is operated.

No sound or poor sound

- Adjust the volume.
- Check that the speakers are connected correctly.
- Check if the stripped speaker wires are clamped.

Left and right sound outputs reversed

- Check the speaker connections and location.

No response from the unit

- Disconnect and reconnect the AC power plug, then turn on the unit again.

Remote control does not work

- Before you press any function button, first select the correct source with the remote control instead of the main unit.
- Reduce the distance between the remote control and the unit.
- Insert the batteries with their polarities (+/- signs) aligned as indicated.

- Replace the batteries.
- Aim the remote control directly at the sensor on the front of the main unit.

No disc detected

- Insert a disc.
- Check if the disc is inserted upside down.
- Wait until the moisture condensation at the lens has cleared.
- Replace or clean the disc.
- Use a finalized CD or correct format disc.

Cannot display some files in USB device

- The number of folders or files in the USB device has exceeded a certain limit. This phenomenon is not a malfunction.
- The formats of these files are not supported.

USB device not supported

- The USB device is incompatible with the unit. Try another one.

Poor radio reception

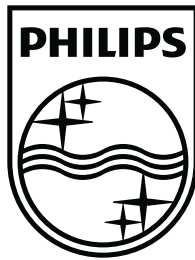
- Increase the distance between the unit and your TV or VCR.
- If the signal is too weak, adjust the antenna or connect an external antenna for better reception.

Clock/timer setting erased

- Power has been interrupted or the power cord has been disconnected.
- Reset the clock/timer.

Timer does not work

- Set the clock correctly.
- Switch on the timer.



Specifications are subject to change without notice
© 2012 Koninklijke Philips Electronics N.V.
All rights reserved.

FWM3500_55_UM_V1.0

