



Philips Norelco  
StyleShaver  
Shaving foil

QS6100/52

# Keep a perfect style

Change foil every 12 months for best results

## Easy to use

- Dual shaver with trimmer shaves even the toughest beards

## Brings maximum ease of use

- 100% waterproof for use in the shower and easy cleaning

## Replace and renew

- Change foil every 12 months for best results

**PHILIPS**  
**NORELCO**

# Specifications

## Shaving foil

- Fits product types: QS6140, QS6160

- Shaving foil per packaging: 1

# Highlights

## 100% waterproof



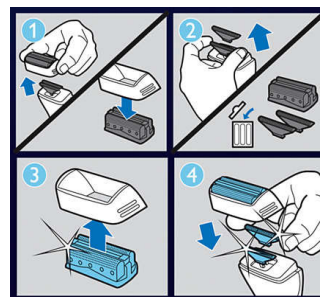
Trim and shave where you want to, wet or dry. And when you're done, just rinse it off under the tap.

## Dual foil shaver with trimmer



The dual foil shaver makes it easy to clean up stubble around your beard, even on your neck. The mid trimmer catches longer, tougher hairs and the 2 floating foils shave everything else perfectly smooth.

## Change foil every 12 months



1. detach the shaver end of your Styleshaver. 2. Remove the old foil and cutters. 3. Place the new foil in the holder. 4. Place the new cutters into your Styleshaver and then click on the new holder and foil.



Issue date 2024-10-28

Version: 2.2.1

UPC: 0 75020 02583 8

© 2024 Koninklijke Philips N.V.  
All Rights reserved.

Specifications are subject to change without notice.  
Trademarks are the property of Koninklijke Philips N.V.  
or their respective owners.

[www.philips.com](http://www.philips.com)