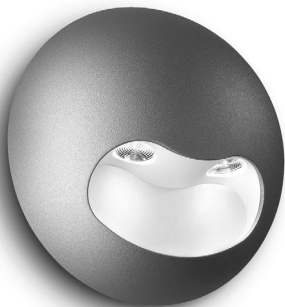


69085/**/16



Gebruiksaanwijzing
Notice d'emploi
Benutzerhandbuch
User manual
Manual de usuario

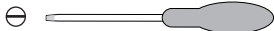
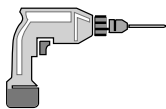
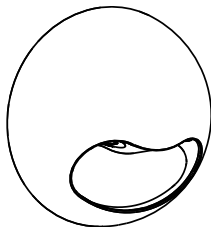


PHILIPS

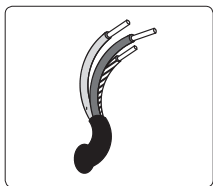
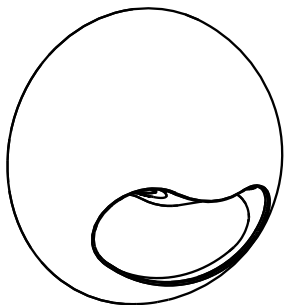
Incl.



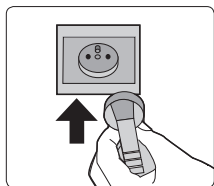
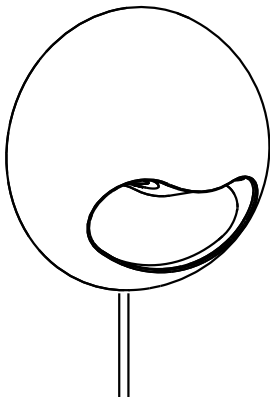
2 x Luxeon Rebel
Powered

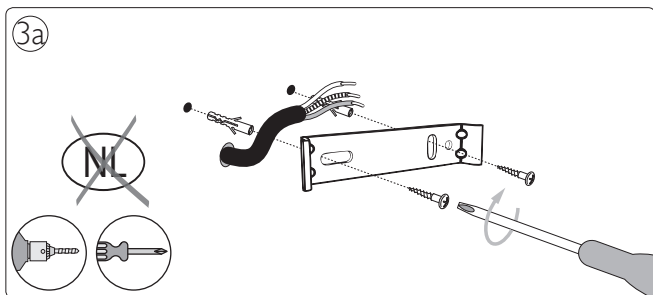
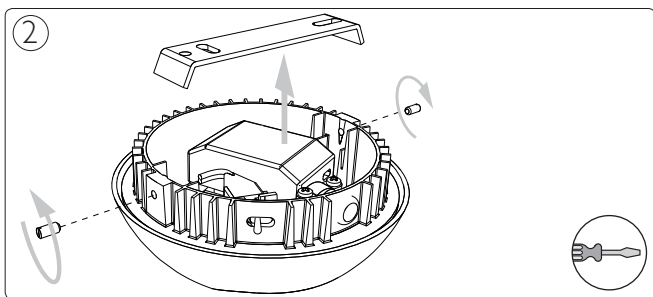
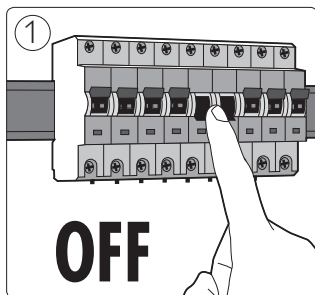
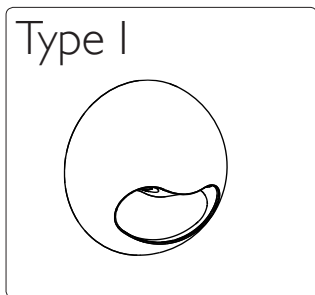


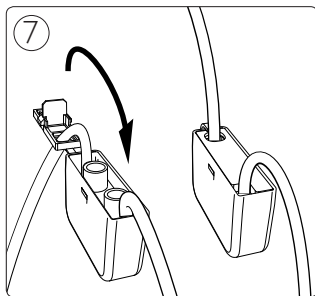
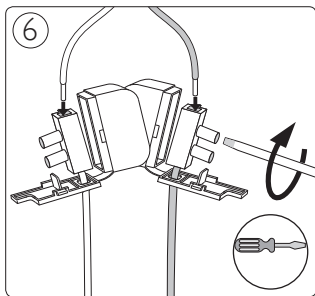
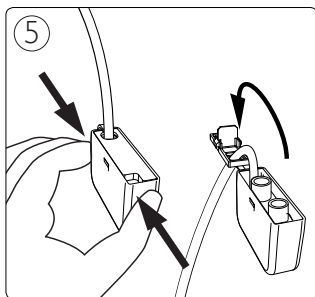
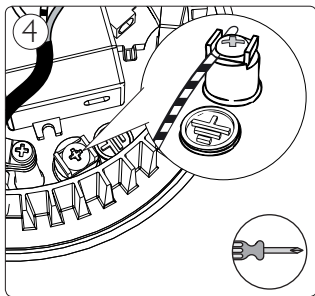
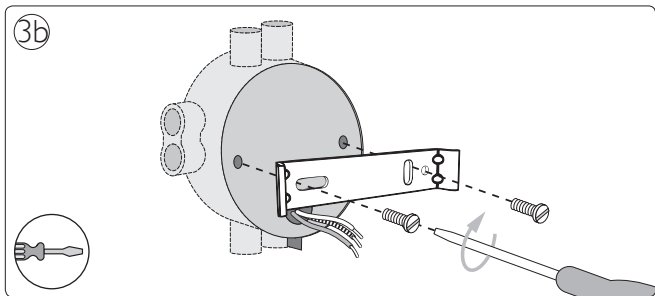
Type I → p.4

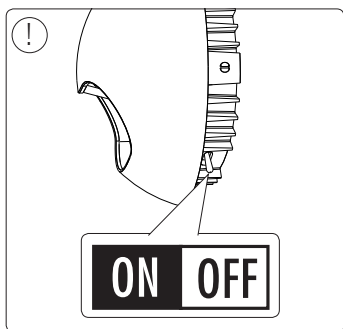
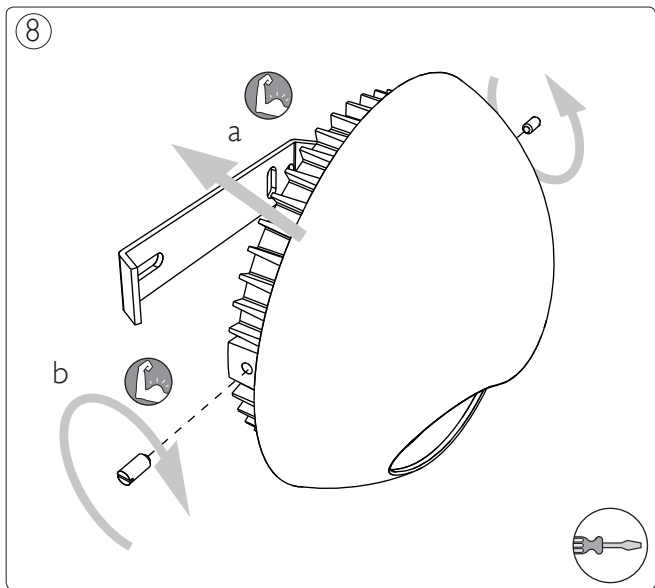


Type II → p.6

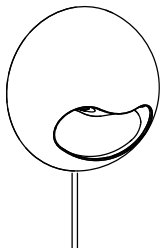




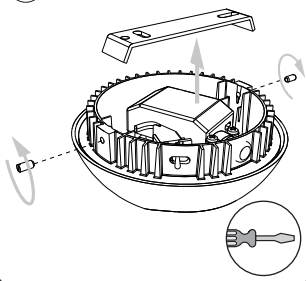




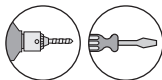
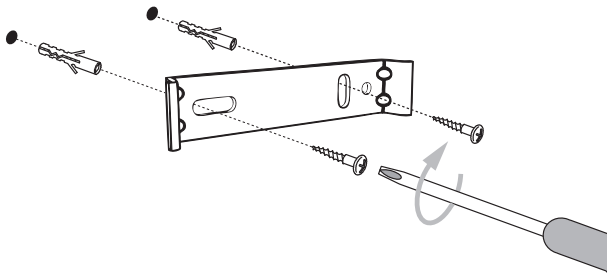
Type II

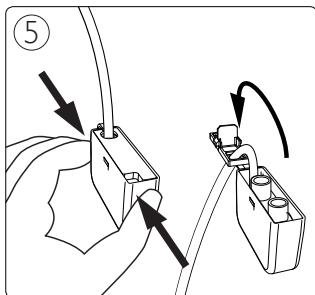
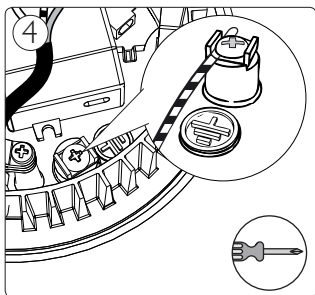
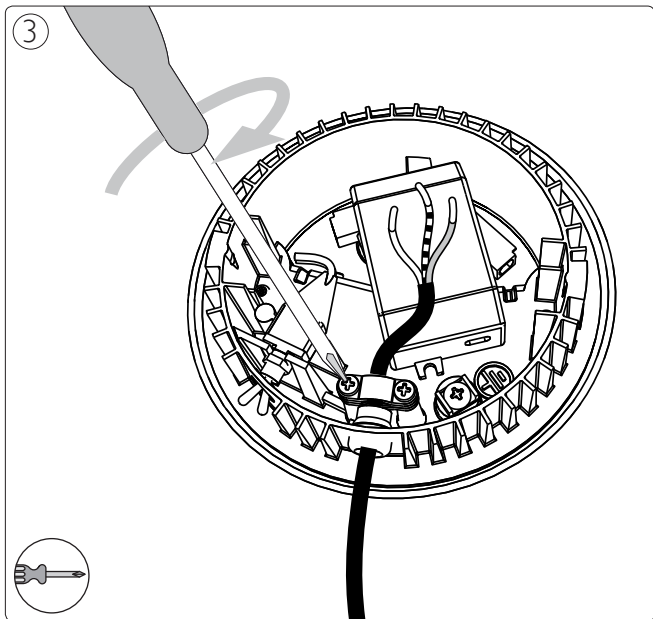


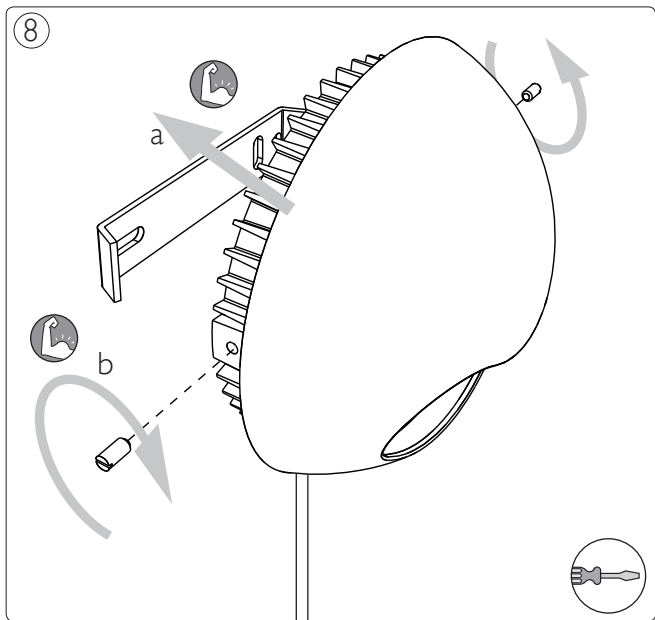
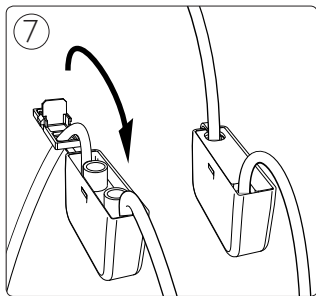
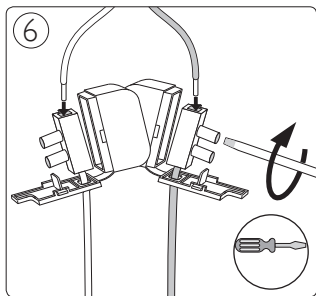
①

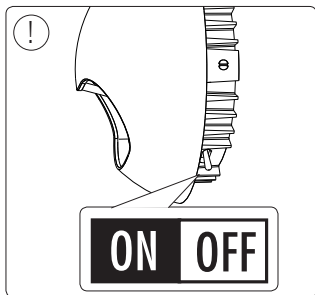
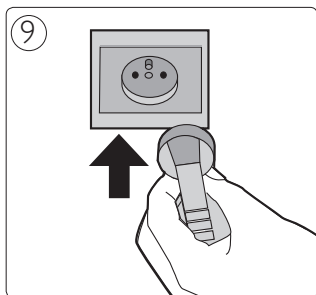


②











Philips Lighting Contact Centre
Int. Business Reply Service
I.B.R.S. / C.C.R.I. Numéro 10461
5600 VB Eindhoven
Pays-Bas / The Netherlands

www.philips.com/homelighting
☎ +800 7445 4775

4404.018.03241
Last update: 21/05/13