

Philips Ledino
Wall light

Watermill
anthracite
LED

Ledino

17254/93/16



Light up your outdoor life

Give your outdoor space a modern upgrade with this sleek Philips anthracite outdoor wall light. It decorates your wall with a powerful bi-directional LED light glow and invites you to linger in your garden long after sunset.

Sustainable light solutions

- Extremely long operating life
- Energy saving
- Philips offers a 5-year warranty on the LED module and driver

Designed for outdoors

- Modern outdoor lighting
- Choose outdoor wall lights
- High-quality aluminium and superior synthetics

Advanced light for outdoors

- High power LED
- Powerful light

Special characteristics

- Weather-proof
- Bi-directional light effect
- Easy to set up for every application

PHILIPS

Highlights

High power LED



Philips outdoor lighting uses the latest state-of-the-art LED technology. It offers strong light output, high light quality and a long lifetime.

Extremely long operating life



A light source you can trust. Philips LED lights offer an extremely long life of at least 20.000 hours (which equals 20 years on basis of an average use of 3 hours a day with an amount of at least of 13.000 on/off switching cycles). With the Philips LED lights you won't have to worry about maintenance or lamp replacement while having the perfect light ambience in your home.

Energy saving



This Philips light conserves energy compared to traditional light sources, helping you to save

money on your electricity bills and do your bit for the environment.

Choose outdoor wall lights

Make the most of your outdoor space with this wall light, perfect for mounting close to your front door or on your terrace walls.

High quality material

This Philips lamp is made specifically for outdoor spaces. It's hard-wearing and built to last, so it will light up your garden night after night. It's constructed from high-quality die-cast aluminium and superior synthetics.

Weather-proof

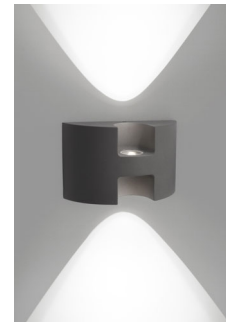


This Philips outdoor lamp is specially designed for humid outdoor environments and has undergone rigorous tests to ensure its water resistance. The IP level is described by two figures: the first one refers to the protection level against dust, the second against water. This lamp is designed with IP44: it is protected against splashing water. This product is most common and ideal for general outdoor use.

Powerful light

This outdoor lamp provides powerful warm white light. A bright pool of light to light up your garden or terrace.

Bi-directional light effect



Bi-directional light effect for general garden illumination.

Modern outdoor lighting

Impressive, bold and minimalist outdoor lighting by Philips. Philips outdoor's elegant modern style is the perfect way to grace gardens, pathways and outdoor spaces with light.

Easy to set up

This lamp and the fittings are designed for a straightforward installation with all the useful things that you need to get up and running included in the box, like a Torx key and Torx screw. You'll find clear guidance about where you can install the product and relevant information about water-resistant IP ratings.

5-year warranty on LED system



On top of the standard 2-year warranty for this lamp, Philips offers a 5-year warranty on the LED system, meaning the LED module and the driver in this lamp.

Specifications

Design and finishing

- Material: aluminium
- Colour: anthracite

Extra feature/accessory incl.

- Fully weatherproof
- 5 year warranty on the LED module
- Bi-directional light beams

Product dimensions and weight

- Height: 10.7 cm
- Length: 17.4 cm
- Width: 6.7 cm
- Net weight: 0.585 kg

Technical specifications

- Mains power: Range 220 V–240 V, 50-60 Hz
- Number of bulbs: 2
- Wattage bulb included: 2 W
- Total lumen output fixture: 200 lm

- Fixture dimmable: No
- LED
- Lifetime up to: 20,000 hrs
- IP code: IP44, protection against objects bigger than 1 mm, protection from splashed water
- Class of protection: I - earthed

Service

- Warranty: 5 year(s)

Packaging dimensions and weight

- Height: 18.8 cm
- Length: 12 cm
- Width: 9.0 cm
- Weight: 0.713 kg

Miscellaneous

- Especially designed for: Garden and Patio
- Style: Modern
- Type: Wall light



Issue date 2017-04-21

Version: 3.0.1

12 NC: 9150 041 26201
EAN: 87 18291 44250 9

© 2017 Philips Lighting Holding B.V.
All Rights reserved.

Specifications are subject to change without notice.
Trademarks are the property of Philips Lighting Holding B.V. or their respective owners.

www.philips.com