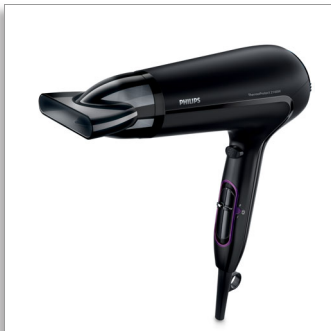




Philips DryCare Advanced  
Hairdryer

### ThermoProtect

2100W  
6 heat & speed settings  
Cool shot



HP8230/00

Fast dry at a lower temperature with ThermoProtect  
with 14mm styling nozzle.

Protect your hair while still enjoying fast drying results. Choose from multiple speed and temperature settings to get the blow dry you want or select ThermoProtect for fast drying at a constant caring temperature.

#### Beautifully styled hair

- Professional 2100W for perfect salon results
- Six flexible speed and temperature settings for full control
- Perfect styling results with a slim styling nozzle
- Cool Shot sets your style

#### Less Hair Damage

- ThermoProtect temperature setting

#### Easy to use

- 1.8 m power cord
- Easy storage hook for convenient storage
- Removeable air flow filter makes cleaning quick and easy



asimpleswitch.com

# PHILIPS

# Highlights

## ThermoProtect temperature



The ThermoProtect temperature provides the optimal drying temperature and gives additional protection from overheating the hair. With the same powerful airflow, you will get the best results in a caring way.

## Professional 2100W



This 2100W professional hairdryer creates a powerful airflow. The resulting combination of power and speed makes drying and styling your hair quicker and easier.

## Speed and temperature settings



The speed and heat required can be easily adjusted to create the perfect style. Six different settings ensure full control for precise and tailored styling.

## Cool Shot



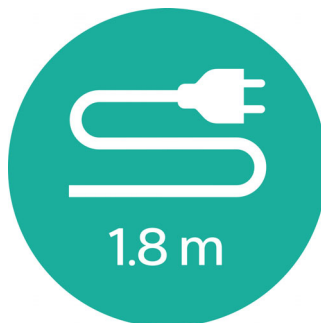
A must-have professional function for hair stylists. The Cool Shot button provides an intense burst of cold air. It is used after styling to finish and set the style.

## Slim styling nozzle



Perfect styling results and a shiny, polished look with a slim styling nozzle for precise styling.

## 1.8 m cord



Convenient to use thanks to the 1.8m power cord length.

## Easy storage hook



The rubberised hook is located at the base of the handle and provides another storage option, particularly convenient for use in the home or when staying at a hotel.

## Removeable air inlet filter

The removeable air flow filter of your hairdryer is easy to maintain. Simply click off to clean. Doing this regularly will prevent build up of dust and hair that can affect drying performance.



## Philips Green Logo

Philips Green Products can reduce costs, energy consumption and CO2 emissions. How? They offer a significant environmental improvement in one or more of the Philips Green Focal Areas – Energy efficiency, Packaging, Hazardous substances, Weight, Recycling and disposal and Lifetime reliability.

# Specifications

## Technical specifications

- Voltage: 220-240 V
- Frequency: 50-60 Hz
- Wattage: 2100 W
- Power: 2100 W
- Color/finishing: High Gloss & Mat Black
- Housing material: ABS
- Motor: DC Motor
- Cord length: 1.8 m

## Features

- Foldable handle: No
- Cool shot
- Dual voltage: No
- Travel pouch: No
- Ceramic coating: No
- Ion conditioning: No
- Hanging loop

- Diffuser: No
- Nozzle / Concentrator: Slim styling 14mm nozzle
- Number of attachments: 1

## Service

- 2-year guarantee

## Weight & dimensions

- A-Box Dimensions: Height = 25cm, Length = 63cm, Width = 35cm
- A-Box Weight: 5.7kg
- F-Box Dimensions: Depth = 11cm, Height = 23cm, Width = 31cm
- F-Box weight: 0.8kg
- Product size: Height = 31cm, Length = 10cm, Width = 22cm
- Product weight (excl. pack): 0.6kg



Issue date 2017-07-24

Version: 11.1.1

EAN: 08 71010 36019 99

© 2017 Koninklijke Philips N.V.  
All Rights reserved.

Specifications are subject to change without notice.  
Trademarks are the property of Koninklijke Philips N.V.  
or their respective owners.

[www.philips.com](http://www.philips.com)