



Hairdryer

- ThermoProtect
- 2100W
- 6 heat & speed settings
- Cool shot

HP8230/00

Fast dry at a lower temperature with ThermoProtect

with 14mm styling nozzle.

Protect your hair while still enjoying fast drying results. Choose from multiple speed and temperature settings to get the blow dry you want or select ThermoProtect for fast drying at a constant caring temperature.

Benefits

Beautifully styled hair

- Professional 2100W for perfect salon results
- Six flexible speed and temperature settings for full control
- Cool Shot sets your style
- Perfect styling results with a slim styling nozzle

Less Hair Damage

- ThermoProtect temperature setting

Easy to use

- 1.8 m power cord
- Easy storage hook for convenient storage
- Removeable air flow filter makes cleaning quick and easy

PHILIPS

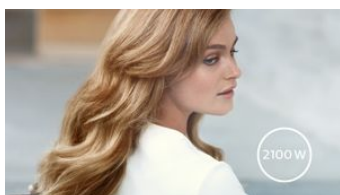
Features

ThermoProtect temperature



The ThermoProtect temperature provides the optimal drying temperature and gives additional protection from overheating the hair. With the same powerful airflow, you will get the best results in a caring way.

Professional 2100W



This 2100W professional hairdryer creates a powerful airflow. The resulting combination of power and speed makes drying and styling your hair quicker and easier.

Speed and temperature settings



The speed and heat required can be easily adjusted to create the perfect style. Six different settings ensure full control for precise and tailored styling.

Cool Shot

A must-have professional function for hair stylists. The Cool Shot button provides an intense burst of cold air. It is used after styling to finish and set the style.

Slim styling nozzle

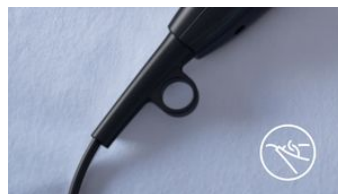


Perfect styling results and a shiny, polished look with a slim styling nozzle for precise styling.

1.8 m cord

Convenient to use thanks to the 1.8m power cord length.

Easy storage hook



The rubberised hook is located at the base of the handle and provides another storage option, particularly convenient for use in the home or when staying at a hotel.

Removeable air inlet filter

The removeable air flow filter of your hairdryer is easy to maintain. Simply click off to clean. Doing this regularly will prevent build up of dust and hair that can affect drying performance.

Specifications

[field not found 'disclaimer_text']

Technical specifications

Voltage	220-240 V
Frequency	50-60 Hz
Wattage	2100 W
Power	2100 W
Color/finishing	High Gloss & Mat Black
Housing material	ABS
Motor	DC Motor
Cord length	1.8 m

Features

Foldable handle	No
Cool shot	Yes
Dual voltage	No
Travel pouch	No
Ceramic coating	No
Ion conditioning	No
Hanging loop	Yes
Diffuser	No
Nozzle / Concentrator	Slim styling 14mm nozzle
Number of attachments	1

Service

2-year guarantee	Yes
------------------	-----

Weight & dimensions

A-Box Dimensions	Height = 25cm Length = 63cm Width = 35cm
A-Box Weight	5.7kg
F-Box Dimensions	Depth = 11cm Height = 23cm Width = 31cm
F-Box weight	0.8kg
Product size	Height = 31cm Length = 10cm Width = 22cm
Product weight (excl. pack)	0.6kg

Packaging dimensions

Height	23.00 cm
Width	31.00 cm
Depth	11.00 cm
Nett weight	0.62 kg
Gross weight	0.84 kg
EAN	08710103601999
Number of products included	1
Country of origin	CN
Harmonised Systems Code	851631

DryCare Advanced

Outer Carton

Length	63.20 cm
Width	35.00 cm
Height	24.77 cm

Gross weight	5.69 kg
EAN	18710103601996
Number of consumer packagings	6



data subject to change
2018, May 27

Version: 11.1.1
EAN: 08710103601999

© 2018 Koninklijke Philips N.V.
All rights reserved.

Specifications are subject to change without notice. Trademarks are the property of Koninklijke Philips N.V. or their respective owners.

www.philips.com