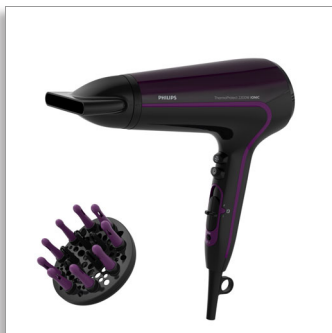




Philips DryCare Advanced  
Hairdryer

### ThermoProtect Ionic

2200 W  
Ionic Care  
Massaging diffuser



HP8233/00

Fast dry at a lower temperature with ThermoProtect

with massaging diffuser and 11 mm styling nozzle.

Protect your hair while enjoying fast drying results. This hair dryer has multiple speed and temperature settings. Features include ThermoProtect for fast drying at a constant caring temperature, Ionic Care and TurboBoost.

#### Beautifully styled hair

- Professional 2200 W for perfect salon results
- Ultra slim 11 mm styling nozzle for precision styling
- Maximises volume and boosts curls while gently massaging scalp
- Turbo boost for extra-fast drying
- Six flexible speed and temperature settings for full control
- Cool Shot sets your style

#### Less Hair Damage

- ThermoProtect temperature setting
- Ionic conditioning for shiny, frizz-free hair
- More Care with ceramic elements, providing far-infrared heat

#### Easy to use

- Elegant, feminine design emphasising performance and quality
- 1.8 m power cord
- Easy storage hook for convenient storage

# Highlights

## Premium Design



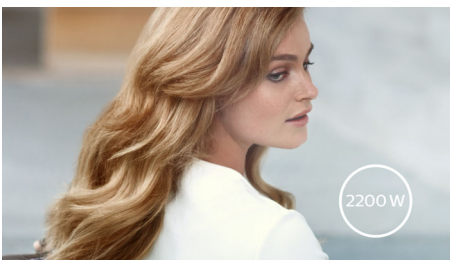
This hairdryer embodies a modern, sophisticated approach to design. Soft, fluid contours and elongated proportions subtly communicate femininity, while precision detailing and high-quality materials and finishes are evidence of the product's superior performance.

## ThermoProtect temperature



The ThermoProtect temperature provides the optimal drying temperature and gives additional protection from overheating the hair. With the same powerful airflow, you will get the best results, whilst being kind to your hair.

## Professional 2200 W



This 2200 W professional hairdryer creates a powerful airflow. The resulting combination of power and speed makes drying and styling your hair quicker and easier.

## Ionic conditioning



Give your hair instant care with ionic conditioning. Charged negative ions eliminate static, condition your hair and smooth the hair cuticles to intensify hair's shine and glossiness. The result is smooth and frizz-free hair with beautiful shine.

## Speed and temperature settings



The speed and heat required can be easily adjusted to create the perfect style. Six different settings ensure full control for precise and tailored styling.

## Ultra slim styling 11 mm nozzle



The ultra-thin styling nozzle concentrates the flow of hair through the 11-mm nozzle for precision styling on specific areas. Great for touch-ups or to set your style.

## Turbo boost



The turbo boost button increases the airflow, to dry your hair even more quickly.

## Asymmetric massaging diffuser



The asymmetric massaging diffuser has a unique asymmetric design that is contoured to the head, making it easier and more intuitive to use. The diffuser spreads the flow of air across the hair, drying hair more healthily, boosting volume and reducing frizz, while the addition of massage helps stimulate the scalp and improve hair vitality. For best results, hold close to the crown and root area and let the diffuser's massaging textured pins encourage volume, add bounce and shape curls.



## Philips Green Logo

Philips Green Products can reduce costs, energy consumption and CO2 emissions. How? They offer a significant environmental improvement in one or more of the Philips Green Focal Areas — Energy efficiency, Packaging, Hazardous substances, Weight, Recycling and disposal and Lifetime reliability.

# Specifications

## Technical specifications

- Voltage: 220-240 V
- Frequency: 50–60 Hz
- Wattage: 2200 W
- Power: 2200 W
- Colour/finishing: Glossy Black and Purple gradient
- Housing material: PC
- Motor: DC Motor
- Cord length: 1.8 m

## Features

- Foldable handle: No
- Cool shot
- Dual voltage: No
- Travel pouch: No
- Ceramic coating: Ceramic Element
- Ion conditioning
- Hanging loop
- Diffuser: Massaging volume diffuser

- Nozzle / Concentrator: Ultra slim styling 11 mm nozzle
- Number of attachments: 2
- Turbo Boost

## Service

- 2 year guarantee

## Weight and dimensions

- A-Box Dimensions: Length = 63cm, Width = 35cm, Height = 25 cm
- A-Box Weight: 6.3 kg
- F-Box Dimensions: Depth = 11cm, Height = 23cm, Width = 31cm
- F-Box weight: 1 kg
- Product size: Width = 22cm, Height = 31 cm, Length = 10 cm
- Product weight (excl. pack): 0.6 kg



Issue date 2017-12-26

Version: 11.0.1

EAN: 08 71010 36020 33

© 2017 Koninklijke Philips N.V.  
All Rights reserved.

Specifications are subject to change without notice.  
Trademarks are the property of Koninklijke Philips N.V.  
or their respective owners.

[www.philips.com](http://www.philips.com)