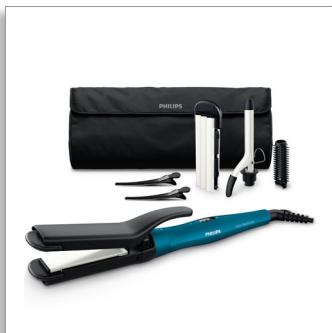


Philips
Multi-Styler

6 styling attachments

190°C temperature
Ceramic coating
Auto shut-off



HP8698/00

Instant creativity, constant care

The Philips Multi-Styler gives you versatility to create the latest hair style for every occasion while caring for your hair.

Beautifully styled hair

- 16 mm tong and brush sleeve; flat and crimper plates; 2 clips
- 190°C styling temperature for long-lasting result

Less damage

- Ceramic coating on every heat attachment

Ease of use

- Auto shut-off function after 60 min
- Pouch for easy storage
- Ready-to-use LED indicator

PHILIPS

Multi-Styler

6 styling attachments 190°C temperature, Ceramic coating, Auto shut-off

HP8698/00

Highlights

6-piece hairstyler set



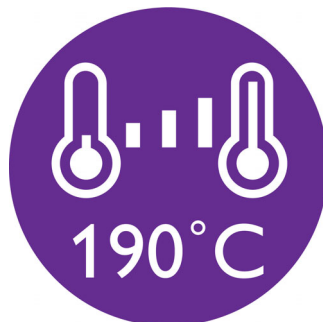
Philips Multi-styler contains: 16-mm curling tong for ringlets; brush sleeve for 16-mm tong to create additional volume; crimper with 2-in-1 convertible flat and crimper plates for straight and crimped look; two hair clips for easier styling.

Ceramic coating



Ceramic coating for better care of your hair.

190°C styling temperature



190°C styling temperature secures long-lasting result while minimising risk of hair damage.

Auto shut-off function



The automatic shut-off feature has been designed to provide peace of mind. If left on, the curler will automatically switch off after 60 min.

Ready-to-use indicator

LED light stops blinking when the styler is ready to use.

Pouch

Pouch for easy storage

Specifications

Accessories

- Pouch

Technical specifications

- Barrel diameter: 16 mm
- Heater type: PTC
- Heat-up time: 3 min
- Cord length: 1.8 m
- Voltage: Universal

Features

- Auto shut-off: after 60 min
- Swivel cord



Issue date 2018-03-28

Version: 5.2.1

© 2018 Koninklijke Philips N.V.
All Rights reserved.

Specifications are subject to change without notice.
Trademarks are the property of Koninklijke Philips N.V.
or their respective owners.

www.philips.com