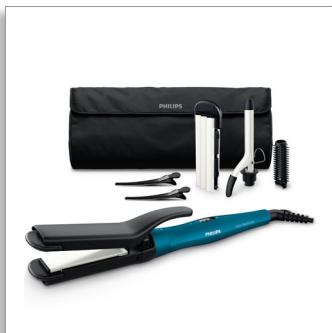


Philips  
Multi-Styler

**6 styling attachments**

190 °C temperature  
Ceramic coating  
Auto shut-off



HP8698/00

## Instant creativity, constant care

Philips Multi-Styler gives you versatility to create the latest hair style for every occasion while caring for your hair.

**Beautifully styled hair**

- 16mm tong and brush sleeve; flat and crimper plates; 2 clips
- 190°C styling temperature for long lasting result

**Less damage**

- Ceramic coating on every heat attachment

**Ease of use**

- Auto shut-off function after 60 min
- Pouch for easy storage
- Ready to use LED indicator

# PHILIPS

## Highlights

### 6 piece hairstyler set



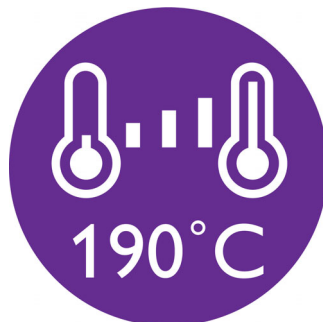
Philips Multi-styler contains: 16mm curling tong for ringlets; brush sleeve for 16mm tong to create additional volume; crimper with 2-in-1 convertible flat and crimper plates for straight and crimped look; two hair clips for easier styling.

### Ceramic coating



Ceramic coating for better care of your hair.

### 190°C styling temperature



190°C styling temperature secures long lasting result while minimizing risk of hair damage.

### Auto shut-off function



The automatic shut-off feature has been designed to provide peace of mind. If left on, the curler will automatically switch off after 60 min.

### Ready to use indicator

LED light stops blinking when the styler is ready to use.

### Pouch

Pouch for easy storage

## Specifications

### Accessories

- Pouch

### Technical specifications

- Barrel diameter: 16 mm
- Heater type: PTC
- Heat-up time: 3 min
- Cord length: 1.8 m
- Voltage: Universal

### Features

- Auto shut-off: after 60 min
- Swivel cord

