

Always there to help you

Register your product and get support at
www.philips.com/welcome

GoGEAR

SA5AZU



User manual

PHILIPS

Contents

1 Important safety information 3

- General maintenance 3
- Environmental information 5
- Recycling the product 5

2 Your new player 7

- What's in the box 7
 - PC software for the player 7
 - Files loaded on the player 7
- Overview 7
 - Controls 7
 - Home screen 8
 - Lock/unlock the keys 8
 - Screen on/off 8
 - Volume reminder 9
 - Sound settings 9

3 Get started 10

- Charge power 10
 - Charge through a computer 10
 - Charge through the USB AC/DC adapter 10
- Switch the player on or off 10
 - Automatic standby and shut-down 10

4 Music 11

- Transfer music to the player 11
- Find music on the player 11
 - Find music by song information 11
 - Find music by playlist 11
 - Find music by file folder 11
- Play music 12
 - Play from the same collection 12
 - Select play options 12
 - Select play options 12
- Playlists 12
 - Add songs to a playlist-on-the-go 12
 - Remove songs from a playlist-on-the-go 12
- Delete songs from the player 13

5 Bluetooth 14

- Listen to music through Bluetooth 14

6 Videos 15

- Transfer videos to the player 15
 - Install Philips Media Converter 15
 - Use Philips Media Converter 15
- Find videos on the player 15
- Play videos 16
- Delete videos from the player 16

7 Pictures 17

- Add pictures to the player 17
- Find pictures on the player 17
- View pictures 17
 - Start a slideshow 17
 - Select play options 17
- Delete pictures from the player 17

8 FM radio 18

- Tune in to radio stations 18
- Store preset stations 18
- Listen to the FM radio 18

9 Text reader 20

- Add text files to the player 20
- Find text files on the player 20
- Read text files 20

10 Recordings 21

- Make recordings 21
 - Record audio/voices 21
 - Record from the FM radio 21
- Listen to recordings 21
- Delete recordings from the player 21

11 Audiobooks 22

- Sync audio books to the player 22
 - Install AudibleManager on the PC 22
 - Download audiobooks to the PC 22
 - Sync to the player 22
- Find audiobooks on the player 23
- Play audiobooks 23

Use bookmarks	23
Delete audiobooks from the player	23
<hr/>	
12 Folder view	24
<hr/>	
13 Settings	25
Sleep timer	25
Display settings	25
Display dim	25
Screensaver	25
Language	25
Information	25
Format device	26
<hr/>	
14 Update the firmware through Philips Device Manager	27
<hr/>	
15 Troubleshooting	29
<hr/>	
16 Technical data	30
System requirements	30

Need help?

Please visit

www.philips.com/welcome

where you can access a full set of supporting materials such as the user manual, the latest software updates, and answers to frequently asked questions.

1 Important safety information

General maintenance

The translation of this document is for reference only.

In the event of any inconsistency between the English version and the translated version, the English version shall prevail.

Caution

- To avoid damage or malfunction:
- Use only power supplies listed in the user manual.
- Do not expose the product to excessive heat caused by heating equipment or direct sunlight.
- Do not drop the product or allow objects to fall on your player.
- Do not allow the product to be submerged in water. Do not expose headphone socket or battery compartment to water; as water entering the set may cause major damage.
- Active mobile phones in the vicinity may cause interference.
- Back up your files. Ensure that you retain the original files you have downloaded to your device. Philips is not responsible for any loss of data if the product becomes damaged or not readable / legible.
- Manage (transfer, delete, etc.) your music files only with the supplied music software to avoid problems.
- Do not use any cleaning agents containing alcohol, ammonia, benzene, or abrasives as these may harm the product.
- Batteries (battery pack or batteries installed) shall not be exposed to excessive heat such as sunshine, fire or the like.
- Danger of explosion if battery is incorrectly replaced. Replace only with the same or equivalent type.

About operating and storage temperatures

- Operate in a place where temperature is always between 0 and 40°C (32 to 104°F)

- Store in a place where temperature is always between -20 and 45°C (-4 to 113°F).
- Battery life may be shortened in low temperature conditions.

Replacement parts/accessories:

Visit www.philips.com/support to order replacement parts/accessories.

Hearing Safety



A pleine puissance, l'écoute prolongée du baladeur peut endommager l'oreille de l'utilisateur.



Warning

- To prevent possible hearing damage, do not listen at high volume levels for long periods.

The maximum output voltage of the player is not greater than 150 mV.

Wide band characteristic voltage WBCV:>= 75 mV

Modifications

Modifications not authorized by the manufacturer may void user's authority to operate the product.

Copyright information

All other brands and product names are trademarks of their respective companies or organizations.

Unauthorized duplication of any recordings whether downloaded from the Internet or made from audio CDs is a violation of copyright laws and international treaties.

The making of unauthorized copies of copy-protected material, including computer programs, files, broadcasts and sound recordings, may be an infringement of copyrights and constitute a criminal offense. This equipment should not be used for such purposes.

The Windows Media and the Windows logo are registered trademarks of Microsoft Corporation in the United States and/or other countries.

Be responsible! Respect copyrights.



**Be responsible
Respect copyrights**

Philips respects the intellectual property of others, and we ask our users to do the same. Multimedia content on the internet may have been created and/or distributed without the original copyright owner's authorization.

Copying or distributing unauthorized content may violate copyright laws in various countries including yours.

Compliance with copyright laws remains your responsibility.

The recording and transfer to the portable player of video streams downloaded to your computer is intended only for use with public domain or properly licensed content. You may only use such content for your private, non-commercial use and shall respect eventual copyright instructions provided by the copyright owner of the work. Such instruction may state that no further copies shall be made.

Video streams may include copy protection technology that prohibits further copying. For such situations the recording function will not work and you will be notified with a message.

Data logging

Philips is committed to improving the quality of your product and enhancing the Philips user experience. To understand the usage profile of this device, this device logs some info / data to the non-volatile memory region of the device.

These data are used to identify and detect any failures or problems you as a user may experience while using the device. The data stored, for example, will be the duration of playback in music mode, duration of playback in turner mode, how many times battery low was encountered, etc. The data stored do not reveal the content or media used on the device or the source of downloads. The data stored on the device are retrieved and used ONLY if the user returns the device to the service center and ONLY to simplify error detection and prevention. The data stored shall be made available to user on user's first request.

© 2009, Xiph.Org Foundation

Redistribution and use in source and binary forms, with or without modification, are permitted provided that the following conditions are met:

- Redistributions of source code must retain the above copyright notice, this list of conditions and the following disclaimer.
- Redistributions in binary form must reproduce the above copyright notice, this list of conditions and the following disclaimer in the documentation and/or other materials provided with the distribution.
- Neither the name of the Xiph.org Foundation nor the names of its contributors may be used to endorse or promote products derived from this software without specific prior written permission.

This software is provided by the copyright holders and contributors "as is" and any express or implied warranties, including, but not limited to, the implied warranties of merchantability and fitness for a particular purpose are disclaimed. In no event shall the foundation or contributors be liable for any direct, indirect, incidental, special, exemplary, or consequential damages (including, but not limited to, procurement of substitute goods or services; loss of use, data, or profits; or business interruption) however caused and on any theory of liability, whether

in contract, strict liability, or tort (including negligence or otherwise) arising in any way out of the use of this software, even if advised of the possibility of such damage

XPAT XML Parser

Copyright (c) 1998, 1999, 2000 Thai Open Source Software Center Ltd

Permission is hereby granted, free of charge, to any person obtaining a copy of this software and associated documentation files (the "Software"), to deal in the Software without restriction, including without limitation the rights to use, copy, modify, merge, publish, distribute, sub-license, and/or sell copies of the Software, and to permit persons to whom the Software is furnished to do so, subject to the following conditions:

The above copyright notice and this permission notice shall be included in all copies or substantial portions of the Software.
THE SOFTWARE IS PROVIDED "AS IS", WITHOUT WARRANTY OF ANY KIND, EXPRESS OR IMPLIED, INCLUDING BUT NOT LIMITED TO THE WARRANTIES OF MERCHANTABILITY, FITNESS FOR A PARTICULAR PURPOSE AND NON-INFRINGEMENT. IN NO EVENT SHALL THE AUTHORS OR COPYRIGHT HOLDERS BE LIABLE FOR ANY CLAIM, DAMAGES OR OTHER LIABILITY, WHETHER IN AN ACTION OF CONTRACT, TORT OR OTHERWISE, ARISING FROM, OUT OF OR IN CONNECTION WITH THE SOFTWARE OR THE USE OR OTHER DEALINGS IN THE SOFTWARE.

Environmental information

All unnecessary packaging has been omitted. We have tried to make the packaging easy to separate into three materials: cardboard (box),

polystyrene foam (buffer) and polyethylene (bags, protective foam sheet.)
Your system consists of materials which can be recycled and reused if disassembled by a specialized company. Please observe the local regulations regarding the disposal of packaging materials, and old equipment.

Recycling the product

Your product is designed and manufactured with high quality materials and components, which can be recycled and reused.
When you see the crossed-out wheel bin symbol attached to a product, it means the product is covered by the European Directive 2002/96/EC:



Never dispose of your product with other household waste. Please inform yourself about the local rules on the separate collection of electrical and electronic products. The correct disposal of your old product helps prevent potentially negative consequences on the environment and human health.



Warning

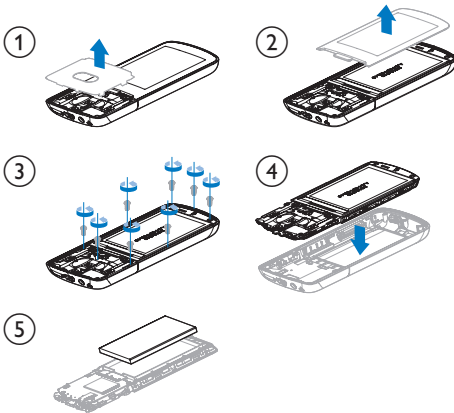
- Removal of the built-in battery invalidates the warranty and can destroy the product.
- The following removal and disposal instructions are steps that are to be performed at the end of the product's life only.

Your product contains a built-in rechargeable battery covered by the European Directive 2006/66/EC, which cannot be disposed of with normal household waste.



SIG, Inc. and any use of such marks by WOOX Innovations is under license.

To safeguard the functionality and safety of your product, take your product to an official collection point or service center where a professional can remove the battery as shown:



Please inform yourself about the local rules on separate collection of batteries. The correct disposal of batteries helps prevent potentially negative consequences on the environment and human health.

CE 0890

This product complies with the requirement of the 1999/5/EC directive.

A copy of the EC Declaration of Conformity is available in the Portable Document Format (PDF) version at www.philips.com/support.



The Bluetooth® word mark and logos are registered trademarks owned by Bluetooth

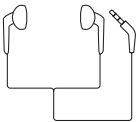
2 Your new player

What's in the box

Make sure that you have received the following items:
Player



Earphones



USB cable



USB AC/DC adapter

Model no.: SSW-2095UK-3 (UK plug)

Model no.: SSW-2095EU-3 (EU plug)

Quick start guide



Safety and Warranty sheet



Note

- The images serve as reference only. Philips reserves the right to change color/design without notice.

PC software for the player

AZURE can work with the following PC software:

- Philips Device Manager** (helps you get firmware updates and recover the player)
- Philips Media Converter** (helps you convert videos to the file type that is supported on the player, and transfer the converted files to the player)

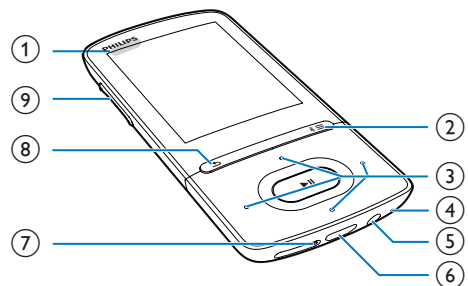
Files loaded on the player

The following files are loaded on **AZURE**:

- User manual
- Frequently asked questions

Overview

Controls



- 1**
 - Press and hold: Switch on/off the player
 - Press: Lock/unlock all buttons
- 2**
 - Press and hold: Switch on/off Bluetooth
 - Press: Show options menu
- 3**

- Navigation buttons



- Press: Select options, or start/pause/resume play



- **on the play screen:**
Press: Skip to the next/previous file
Press and hold: Fast forward or rewind within current file

④ MIC

- Microphone

⑤

- 3.5-mm headphone connector

⑥

- USB connector for power charging and data transfer

⑦ RESET

- Press the hole by using the tip of a ball pen when the screen does not respond to the pressing of keys

⑧

- Press: Back one level

⑨ Volume buttons

- Press: Increase/decrease the volume
- Press and hold: Increase/decrease the volume quickly

Home screen

[Music]

- play audio files

[Video]

- watch videos

[FM radio]

- tune in to the FM radio;
- record from the FM radio

[Pictures]

- view pictures

[Folder view]

- view files in folders

[Extras]

- read .txt files;
- create or listen to recordings;

- read audiobooks

[Sound]

- Select options of sound effects

[Bluetooth]

- Connect to Bluetooth headphones or speakers

[Settings]

- customize the settings of **AZURE**

Navigate from the Home screen

- From the Home screen, you can access functional menus by pressing the navigation buttons / / / and .
- To go back to previous screens, press repeatedly.

Switch between the Home screen and play screen

On the Home screen,

During music play or radio play,

- Press and select **[Now playing]** or **[Last played]**.

On the play screen,

- Press repeatedly.

Select a theme

To select a theme for the display,

- On the Home screen, press and select **[Theme]**.

Lock/unlock the keys

When the player is on, use the lock to prevent accidental operation.

- Press and hold / to lock or unlock the keys.
↳ All buttons except the volume keys are locked and a lock icon is displayed.

Screen on/off

To save power, the screen switches off automatically after the pre-defined time duration if

- no new action is taken on **AZURE**; and
- a value is selected in > **[Display settings]** > **[Display dim]** .

To exit the power-saving mode

- Press any key.

Volume reminder

AZURE can have you reminded when:

- the volume reaches the high level (80 dBA); or
- you have listened at a high volume level for 20 hours.

With the feature of volume reminder, the Philips MP3/MP4 player complies with the European Union regulations (EN 60950-1) in protecting your hearing safety.


When you increase the volume,


- 1** Press the volume up button.
↳ When the volume level reaches the high level, a pop-up screen is displayed.
 - 2** To continue to increase the volume, select **[Yes]** and press **▶||** to confirm.
↳ You can continue to increase the volume.
- To exit volume adjustment, select **[No]** and press **▶||** to confirm.
↳ The play resumes at the previous volume level.

When you have listened at a high volume level for 20 hours, a pop-up is displayed.




- To keep listening at a high volume level, select **[Yes]** and press **▶||** to confirm.
- To exit high volume, select **[No]** and press **▶||** to confirm.
↳ The volume level drops below the high level (80 dBA) .

Sound settings

From the Home screen, go to  **[Sound]** to select your sound settings:

- Alternatively, on the music play screen, press  > **[Sound settings]**.

MySound or **[Equalizer]**

- Defines sound settings as desired.
In **MySound**, press  /  /  / 
and **▶||** to select your option.

[FullSound]

- Restores the sonic details that music compression loses (e.g. MP3, WMA).

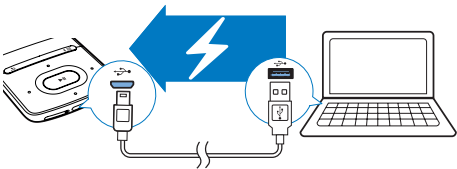
3 Get started

Charge power

AZURE has a built-in battery that can be charged through the USB port of a computer or the supplied USB AC/DC adapter:

Charge through a computer


Connect **AZURE** to a PC by using the USB cable.



Note

- When you connect **AZURE** to a computer; you are briefly prompted to select: **[Charge & transfer]** or **[Charge & play]**. If no option is selected, **[Charge & transfer]** applies.
- To play **AZURE** when you charge power, select **[Charge & play]**.

Battery level indication

- When the battery is low, the low battery screen is displayed repeatedly.
- When the charging process is complete,  is displayed.

Note

- Rechargeable batteries have a limited number of charge cycles. Battery life and number of charge cycles vary by use and settings.

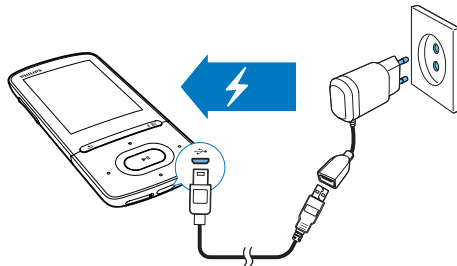
Charge through the USB AC/DC adapter

Use the USB cable to connect **AZURE** to the USB connector of the supplied USB AC/DC adapter:



Make sure that you have used the AC/DC adapter with the right power plug:

Model no.: SSW-2095UK-3 (UK plug)

Model no.: SSW-2095EU-3 (EU plug)



Switch the player on or off

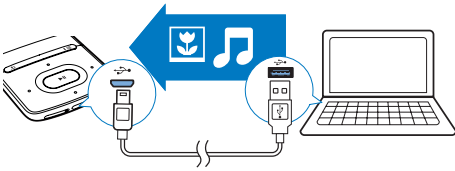
Press and hold  /  until the player is switched on or off.

Automatic standby and shut-down

The player has an automatic standby and shut-down feature that can save battery power: After 5 minutes in idle mode (no play, no button is pressed), the player switches off.

4 Music

Transfer music to the player



You can transfer music from your PC media library to **AZURE** in the following ways:

- Drag and drop music files in Windows Explorer.

To drag and drop music files in Windows Explorer,

- 1 Connect **AZURE** to a PC.
- 2 On the PC, under **My Computer** or **Computer**,
 - select **AZURE**, and create file folders.
- 3 On the PC, drag and drop music files to the file folders on **AZURE**.
 - Alternatively, drag and drop file folders from the PC to **AZURE**.

Find music on the player

After you sync the player with your PC media library, find the music on the player.

Find music by song information

In **♪**, the music library is sorted by metadata or ID3 tag under different views:

👤 [Artists]

- Songs are sorted by artist in alphabetical order;
- Under each artist, songs are sorted by album in alphabetical order.

● [Albums]

- Songs are sorted by album in alphabetical order.

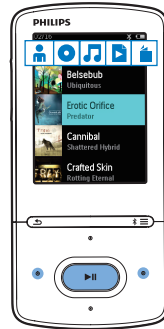
♪ [All songs]

- Songs are sorted by song title in alphabetical order.
- ##### 📁 [Genres]
- Songs are sorted by genre, such as pop, rock.

Use the selector bar

Use the selector bar to switch between the library views.

- Press **⏮** / **⏭** to select a library view on the selector bar.



Find music by playlist

In **♪**, select **📁** on the selector bar. You can find:

- playlists-on-the-go that you create on the player (see 'Add songs to a playlist-on-the-go' on page 12).

Find music by file folder

In **📁**, find music by file folder.

To organize music files by file folder,

- 1 Connect **AZURE** to a PC.
- 2 On the PC, under **My Computer** or **Computer**,
 - select **AZURE**, and create file folders.
- 3 On the PC, drag and drop music files to the file folders on the **AZURE**.
 - Alternatively, drag and drop file folders from the PC to **AZURE**.

Play music

You can start play from a song, or play an entire album or artist.

To start play from a song,

- 1 Select a song.
- 2 Press ►|| to start play.
↳ Play starts from current song.

To play the entire album, artist, or playlist,

- 1 Select an album, artist, or playlist.
- 2 Press ≡ > [Play].
- 3 Press ►|| to start play.

On the play screen,

- Press ►|| to pause and resume play.
- To go to the previous screen, press ⏮.
↳ The play screen returns a few seconds later.
↳ On the play screen, you can see the file information and play status.

To select a music file on the play screen,

- Repeatedly press ◀◀ / ▶▶.

To rewind or fast forward within current song,

- On the play screen, press and hold ◀◀ / ▶▶.

Play from the same collection

During the song play, you can switch to a collection the same as that of current song.

- 1 On the play screen, press ≡ and select [Play mode].
- 2 In [Play music from...], select [... this artist], [... this album], or [... this genre]. Press ►||.
↳ You start to play current artist, album, or genre.

To play all the songs on the player,

- 1 On the play screen, press ≡ and select [Play mode].
- 2 In [Play music from...], select [All songs]. Press ►||.

Select play options

On the play screen, press ≡ to select play options, such as play mode, sound settings, and sleep timer (see 'Settings' on page 25).

Select play options

On the play screen, press ≡ to select play options, such as play mode, sound settings (see 'Settings' on page 25).

Playlists

On the player, you can find:

- three playlists-on-the-go for you to add songs on the player.

Add songs to a playlist-on-the-go

To add current song,



- 1 Select or play a song.
- 2 On the list of songs or play screen,
 - press ≡ and select [Add to playlist].
- 3 Select a playlist-on-the-go. Press ►||.
↳ A confirmation message is displayed.
- 4 Select [Yes] to confirm.
↳ You save current song to the playlist.

To add an album or artist,



- 1 Select an album or artist.
- 2 On the list of albums or artists,
 - press ≡ and select [Add to playlist].
- 3 Select a playlist-on-the-go. Press ►||.
↳ A confirmation message is displayed.
- 4 Select [Yes] to confirm.
↳ You save the album or artist to the playlist.

Remove songs from a playlist-on-the-go

To remove current song from a playlist,


- 1 On the play screen, press  > **[Remove from Playlist]**.
- 2 Select a playlist-on-the-go. Press .
↳ A confirmation message is displayed.
- 3 Select **[Yes]**.
↳ You remove current song from the selected playlist.

To remove all the songs in a playlist,

- 1 In the view of , go to a playlist-on-the-go.
- 2 On the list of songs, press  > **[Clear playlist]**.
- 3 Select **[Yes]**.
↳ You remove all the songs from the playlist.

Delete songs from the player

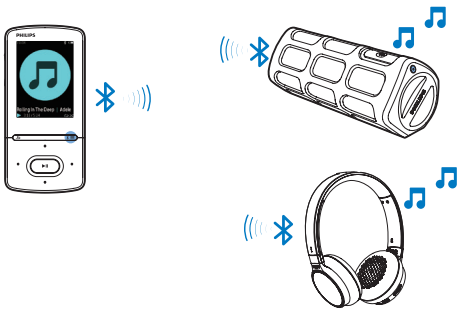
To delete current song during play,

- 1 On the play screen, press  and select **[Delete]**.
↳ A confirmation message is displayed.
- 2 Select **[Yes]** to delete the song.
↳ Current song is deleted from the player.

5 Bluetooth

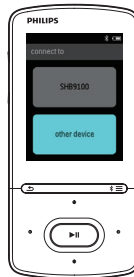
Listen to music through Bluetooth

With Bluetooth enabled on **AZURE**, you can listen to music through Bluetooth headphones or speakers.



↳ You can listen to music through Bluetooth.

- Next time you switch on Bluetooth, **AZURE** connects to the last paired device automatically.
- To pair with and connect to another Bluetooth device, select **[Other device]** on the **[Connect to...]** screen.



- 1 Switch on Bluetooth on **AZURE** and the Bluetooth device.
 - on **AZURE**, press and hold * / ≡;
 - Alternatively, on the music play screen, press * / ≡ > **[Play via Bluetooth]**. Select **[Bluetooth On/Off]** > **[On]**.
↳ * is displayed on the upper right corner.
- 2 On **AZURE**, search for and connect to the Bluetooth device:
 - ① On the music play screen, press * / ≡ > **[Play via Bluetooth]** > **[Connect to]**.
↳ You can find a list of available Bluetooth devices or previously paired devices.
 - ② Select a device to start pairing and connection.
↳ When connection is complete, * changes to *.

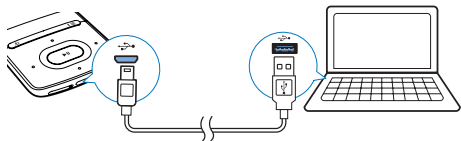
6 Videos

Transfer videos to the player

You can transfer videos to the player in two ways:

- Transfer through **Philips Media Converter**;
With the video converter software, you can convert videos to the file type that is supported on the player, and transfer the converted files to the player.
- Drag and drop video files (.AMV files) in Windows Explorer.
By doing so, you can organize your video collection by file folder.

Install Philips Media Converter



- 1 Connect **AZURE** to a PC.
- 2 On the PC, select **My Computer** (Windows XP / Windows 2000) / **Computer** (Windows Vista / Windows 7 / 8).
- 3 Click the **Philips GoGear AZURE** icon. Double-click the **PMCsetup.exe**.
- 4 Follow the onscreen instructions to complete the installation of the software.

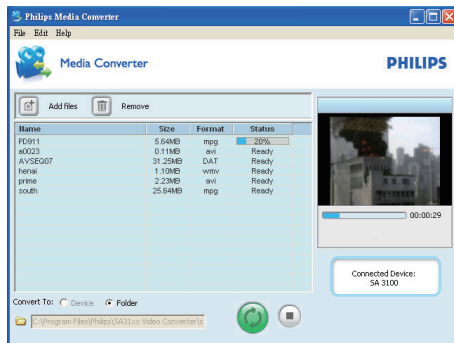


Tip

- You can also get the **Philips Media Converter** software from www.philips.com/support.

Use Philips Media Converter

- 1 On your PC, launch **Philips Media Converter**.
- 2 Connect the player to the PC by using the USB cable.
 - Wait until the player is recognized by **Philips Media Converter**.



- 3 In **Philips Media Converter**, add videos from your PC library:
 - Click .
 - ↳ The video is added to the list of files for conversion and transfer.
 - To remove a video from the list of files, click .
- 4 In **Philips Media Converter**, start the file conversion and transfer:
 - Click .

Find videos on the player

To find videos by file name,

- Go to .
- ↳ Videos are listed by file name.

To find videos by file folder,

- Go to .
- ↳ Videos are organized by file folder as on the PC.

Play videos

- 1 Select a video.
- 2 Press ►► to start play.
↳ The video plays in the landscape view.



On the play screen,

- Press ►► to pause and resume play.

To select a video file on the play screen,

- Repeatedly press ◀◀ / ▶▶.

To rewind or fast forward within current video,

- On the play screen, press and hold ◀◀ / ▶▶.

Delete videos from the player


- 1 Select or play a video.
- 2 On the list of videos or play screen,
 - press ≡ and select [Delete video].
↳ A confirmation message is displayed.
- 3 Select [Yes] to delete the video.
↳ Current video is deleted from the player.

7 Pictures


Add pictures to the player

- 1 Connect **AZURE** to a computer.
- 2 On the PC, under **My Computer** or **Computer**,
 - select **AZURE**, and create file folders.
- 3 On the PC, drag and drop files to the file folders on **AZURE**.
 - Alternatively, drag and drop file folders from the PC to **AZURE**.

Find pictures on the player

- Go to .
↳ The thumbnails of pictures are listed.

To find pictures by file folder,

- Go to .
↳ Pictures are organized by file folder as on the PC.


View pictures

- Select a picture. Press  to view the picture.
↳ The picture is displayed in the landscape view.


On the play screen,

- Press  /  to select a picture.

Start a slideshow

- On the play screen, press  to start a slideshow.
↳ Pictures play one by one.

Select play options


On the play screen, press  to select play options:

[Brightness]	Select the brightness of the screen.
[Backlight timer]	Select a value. After the selected time duration, the screen switches off automatically.

In [Slideshow settings], select your options for slideshow:

[Time per slide]	Select the time interval between two slides.
[Repeat]	Play pictures repeatedly.
[Shuffle]	Play pictures in random order.

Delete pictures from the player

- 1 Select or play a picture.
- 2 On the list of pictures or play screen,
 - press  and select [Delete picture].
↳ Current picture is deleted from the player.

8 FM radio

Note

- Plug in the supplied earphones when you tune in to radio stations. The earphones double as antenna. For better reception, move the earphone cable in different directions.

Tune in to radio stations

Auto tune

The first time you tune in to the radio, start Auto tune to search for stations.

- 1 From the Home screen, go to > **[Auto tune]**.
↳ Up to 20 stations are stored as presets.

- 2 Press or repeatedly to select a preset station. Press to start play.

To select a preset on the play screen,

- Press or repeatedly.



Tip

- When you move to a new place (such as a new city or country), restart auto tune for better reception.

Manual tune

Use Manual tune to search for a frequency or station.

- 1 From the Home screen, go to > **[Manual tune]**.
↳ The last played station starts to play.

- 2 On the play screen, press and hold or .
↳ You tune in to the next station from current frequency.
 - For fine tuning, press or repeatedly.

Store preset stations

On **AZURE**, you can store up to 20 preset stations.

- 1 Tune in to a radio station.
- 2 On the play screen, press and select **[Save to preset]**.
- 3 Press or to select a location in the list of presets. Press .
- ↳ A confirmation message is displayed.
- 4 Select **[Yes]** to confirm.
↳ Current station is saved to the location.

To remove a preset station,





- 1 On the play screen or in the list of presets, press and select **[Clear preset]**.
↳ In the list of presets, current station is selected.
- 2 Press or to select a station.
- 3 Press . Select **[Yes]**.
↳ The selected station is removed from the list of presets.

To remove all preset stations,

- 1 On the list of presets, press > **[Clear all presets]**.
- 2 Select **[Yes]**.
↳ All the stations are removed from the list of presets.

Listen to the FM radio

- 1 Go to > **[Presets]**.
- 2 Press or to select a preset station. Press to start play.

- On the play screen, press  or  to select a preset.
- Press  to select another preset station from **[Presets]**. Press  to start play.


9 Text reader

You can read text files (.txt files) on the player.


Add text files to the player

- 1 Connect **AZURE** to a computer.
- 2 On the PC, under **My Computer** or **Computer**,
 - select **AZURE**, and create file folders.
- 3 On the PC, drag and drop files to the file folders on the **AZURE**.
 - Alternatively, drag and drop file folders from the PC to **AZURE**.




Find text files on the player

- From the Home screen, go to  > [Text].
↳ A list of text files is displayed.

Find text files by file folder

- In , select file folders and files as you organize them on the PC.

Read text files

- 1 Select a text file.
- 2 Press  to start play.
- 3 On the play screen,
 - Press  or  to turn over pages.

10 Recordings

Make recordings

With **AZURE**, you can record:

- voices or audio through the built-in microphone; or
- radio programs when the radio plays on the player.

Record audio/voices

- 1 In > **[Recordings]**, select **[Start voice recording]**.
↳ The recording screen is displayed.
- 2 Make sure that the microphone is close to the sound source to be recorded.



- 3 Press to toggle between pause and record. Press to stop.
- 4 Select **[Yes]** to save the recording.
↳ Recordings are saved to > **[Recordings Library]** > **[Voice recordings]**. (Filename format: RECXXX.WAV, where XXX is the recording number that is generated automatically.)

Record from the FM radio

- 1 In , tune in to a radio station.

- 2 On the play screen, press and select **[Start FM radio recording]**.
↳ You start recording from the FM radio.
- 3 Press to toggle between pause and record. Press to stop.
- 4 Select **[Yes]** to save the recording.
↳ Recordings are saved to > **[Recordings library]** > **[FM radio recordings]**. (Filename format: FMRECXXX.WAV, where XXX is the recording number that is generated automatically.)

Note

- The feature of FM radio recording is available with some versions only. Refer to the onscreen menu of the player to find out which features are available to you.

Listen to recordings

- 1 In > **[Recordings library]**, select a recording.
- 2 Press to start play.
To select a file on the play screen,
 - Repeatedly press / .**To rewind or fast forward within current file,**
 - On the play screen, press and hold / .


Delete recordings from the player

- 1 Select or play a recording.
- 2 On the list of recordings or play screen,
 - press and select **[Delete]**.
↳ Current recording is deleted from the player.

To delete all the recordings on the player,

- In > **[Recordings library]**, select a recordings library. Select **[Delete all]**.

11 Audiobooks

Go to  > [Audiobooks] to play books in audio formats that you have downloaded from www.audible.com.

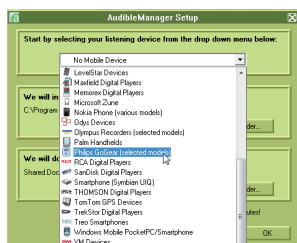
Sync audio books to the player

From www.audible.com, download and install the **AudibleManager** software on your PC. Through the software, you can

- download audiobooks from www.audible.com to your PC library of audio books;
- sync the audiobooks to your player.

Install AudibleManager on the PC



- 1 Connect your PC to the Internet.
- 2 From www.audible.com, download the **AudibleManager** software for MP3/ MP4 players.
- 3 Install the software on your PC:
 - On the setup screen, select **Philips GoGear (selected models)** from the drop-down list of listening devices;



- Follow onscreen instructions to complete the installation.

Download audiobooks to the PC

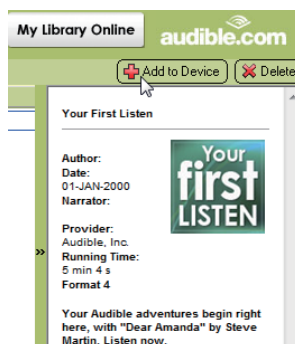
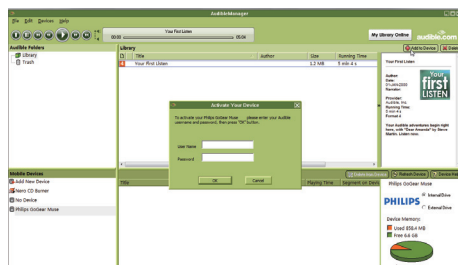
- 1 Connect your PC to the Internet.

- 2 Launch **AudibleManager** on your PC.
- 3 On **AudibleManager**, click the **My Library Online** button to connect to www.audible.com.
- 4 Select and download audio books:
 - Log in to your account with www.audible.com;
 - Download audio books in the format of  or .

→ The downloaded books are automatically added to your library on **AudibleManager**.

Sync to the player

- 1 Launch **AudibleManager** on your PC.
- 2 Connect the player to the PC. Wait till the player is recognized by **AudibleManager**.
- 3 On **AudibleManager**, click **Add to Device**.
 - The first time you connect the player to **AudibleManager**, activate the player as prompted.




To check the audio books transferred to the player,

See the player pane on **AudibleManager**.

- If necessary, click **Refresh Device**.

Find audiobooks on the player

In  > **[Audiobooks]**, audiobook files are organized by book title or author:

[Books]

- Books are sorted by book title.

[Authors]



- Books are sorted by author.

Play audiobooks


1 Select a book.



2 Press  to start play.

↳ On the play screen, you can see the book information and play status.

- On the play screen, press  to pause and resume play.
- To go to the previous screen, press .

To skip titles or sections during play,


1 On the play screen, press  > **[Navigation mode]**. Select **[Titles]** or **[Section]**.

2 On the play screen, press  / .

Use bookmarks

On an audiobook, you can add up to 10 bookmarks to the play time. Start play from the bookmarked play time as needed.


To add a bookmark,

1 On the play screen, press  and select **[Bookmarks]** > **[Add bookmark]**.

2 Select a location.


↳ Current play time is added to the location in the list of bookmarks.

To play from a bookmarked play time,

- On the play screen, press  and select **[Bookmarks]** > **[Go to bookmark]**. Select an option.


↳ Play starts from the selected play time.

To delete a bookmark,

- On the play screen, press  and select **[Bookmarks]** > **[Delete bookmark]**. Select an option.


↳ You remove the play time from the list of bookmarks.

Delete audiobooks from the player

1 On the play screen, press  > **[Delete]**.
↳ A confirmation message is displayed.




2 Select **[Yes]** to delete the audiobook.
↳ Current audiobook is deleted from the player.

12 Folder view

Go to  to view and play media files from the media library on the player.




13 Settings

In , select your options for the player.


- 1 Press  /  to select an option.
- 2 Press  to confirm.

Sleep timer

Switch on the sleep timer. The **AZURE** can switch off automatically after a certain time duration.

- 1 In **[Sleep timer]**, select **[On]**.
- 2 Press  /  to select an option. Press .
 - ↳ After the selected time duration, the player is switched off automatically.

After the sleep timer is switched on,

- Select  > **[Sleep timer]**.
 - ↳ You can see the time left before the player is switched off.

Display settings


[Brightness] Adjusts the brightness of the screen.

[Theme] Selects the theme for the display.

Display dim

The screen enters the idle mode, if no new action is taken on the player. After the pre-defined time duration, the idle screen is switched off automatically. To save battery power, select a low value for the time duration.

To set the time duration

- 1 From the Home screen, select  > **[Display settings]** > **[Display dim]**.
- 2 Select a time duration.
 - ↳ After the selected time duration, the idle screen is switched off automatically.



Tip

- For power-saving purpose, select a low value.





To exit the power-saving mode

- Press any key.

Screensaver

If you have selected a screensaver, the screensaver appears on the idle screen after the pre-defined time duration.

To select a screensaver

- 1 From the Home screen, select  > **[Display settings]** > **[Screensaver]**.
- 2 In **[Screensaver]**, press  /  and  to select an option:

[None]	shows blank screen.
[Album art]	shows the CD cover of current song or last played song, if available.
[Screen off]	switches off the screen.
[Demo mode]	shows major features of the player.

To exit the screensaver

- Press any key.

Language

You can change the language selection in **[Language]**.

Information

In **[Information]**, learn the following information about the player:

[Player information]

[Model:]	full product name Check the full product name when updating firmware from the support website.
-----------------	---

[Firmware version:]	current firmware version Check the firmware version when updating firmware from the support website.
----------------------------	---

[Support site:]	web site that provides support for the player
------------------------	--

[Disk space]

[Free space:]	space available
----------------------	-----------------

[Total space:]	memory size
-----------------------	-------------

[Songs]	number of songs that are stored on the player
----------------	--

[Pictures]	number of pictures that are stored on the player
-------------------	---

[Videos]	number of videos that are stored on the player
-----------------	---

[File type supported]

[Music]	supported types of music files
----------------	--------------------------------

[Pictures]	supported types of picture files
-------------------	----------------------------------

[Videos]	supported types of video files
-----------------	--------------------------------

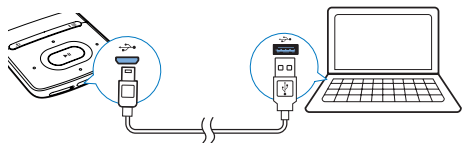
Format device

Format the player: You remove all the data that are stored on the player.

- Select **[Format device]**, and then, select **[Yes]** as prompted.

14 Update the firmware through Philips Device Manager

Install Philips Device Manager



- 1 Connect **AZURE** to a PC.
- 2 On the PC, select **My Computer** (Windows XP / Windows 2000) / **Computer** (Windows Vista / Windows 7 / 8).
- 3 Right click on the **Philips GoGear AZURE** icon. Select **Install Philips Device Manager**.
 - Alternatively, click the **Philips GoGear AZURE** icon. Double-click the **installer.exe**.
- 4 Follow the onscreen instructions to complete the installation of the software.

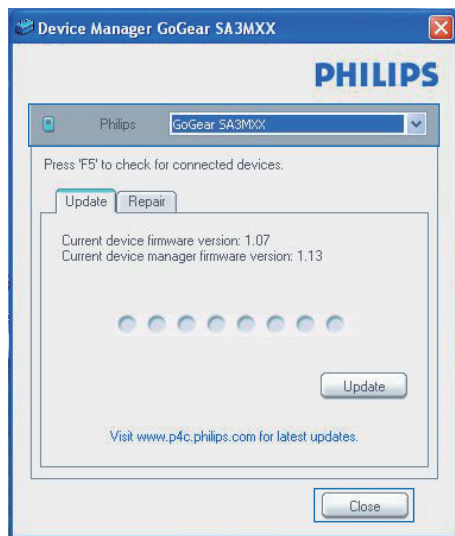
Note


- The installation requires you to agree to the license terms.

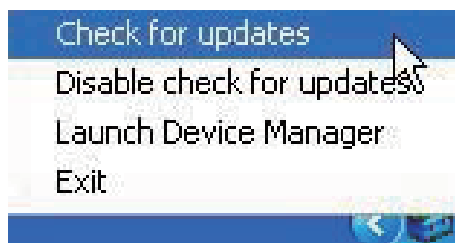
Check for firmware updates

- 1 Make sure that you have connected your PC to the Internet.
- 2 Launch **Philips Device Manager**.
 - ↳ A dialog box is displayed.
- 3 Connect **AZURE** to your PC.
 - ↳ When the device is connected, "SA5AZUX" is displayed on the text box.

↳ You can find current firmware version of the device.



- 4 To check for firmware updates,
 - ① Close the dialog box of Philips Device Manager.
 - ② At the base of the PC screen, right click  and select Check for updates.



↳ **Philips SA5AZUX Device Manager** checks for updates from the Internet.

Update the firmware

- 1 When the firmware update is available, follow the onscreen instructions to download and install the firmware.
- 2 Disconnect **AZURE** from the PC.

↳ **AZURE** restarts after the firmware is updated and is ready for use again,

15 Troubleshooting

If **AZURE** is not working properly or the display freezes, you can reset it without losing data:

How do I reset **AZURE**?

- Insert a pen tip or other object into the reset hole on **AZURE**. Hold until the player shuts down.
- If the reset option is unsuccessful, recover **AZURE** through **Philips Device Manager**:

- 1 On your PC, launch **Philips Device Manager**.
- 2 Enter the recovery mode:
 - ① Switch off **AZURE**.
 - ② Press and hold the volume up button, and then, connect **AZURE** to your PC.
 - ③ Keep holding the button until **Philips Device Manager** recognizes **AZURE** and enters the recovery mode.
- 3 Start the recovery process:
 - ① On **Philips Device Manager**, click the **Repair** button. Follow the onscreen instructions to complete the recovery process.
 - ② When the recovery is completed, disconnect **AZURE** from your PC.
- 4 Restart **AZURE**.

16 Technical data

Power

- AC/DC power adapter
Philips SSW-2095UK-3, SSW-2095EU-3
Input: 100-240 V~ 50/60 Hz, 0.2 A
Output: DC 5.0 V, 600 mA
- Power supply: 350 mAh Li-ion polymer internal rechargeable battery
- Play time¹
Music (.mp3): up to 35 hours
(**FullSound** off); up to 20 hours
(**FullSound** on)
Music streaming through Bluetooth (A2DP): up to 10 hours
Video: up to 6 hours
FM radio: up to 12 hours

Software

- **Philips Media Converter:** to convert and transfer³ videos
- **Philips Device Manager:** to update the firmware and recover the player

Connectivity

- Headphone 3.5 mm
- USB 2.0 High speed
- Bluetooth standard 2.1 +EDR

Sound

- Channel separation: > 45 dB
- Frequency Response: 80-18,000 Hz
- Output power: 2 x 2.1 mW
- Signal to noise ratio: > 84 dB

Audio playback

Supported formats:

- MP3
- WMA (unprotected)
- FLAC
- APE
- WAV

Video playback

Supported formats:

- AMV

Picture display

Supported formats:

- JPEG

- BMP

Storage media

Built-in memory capacity²:

- SA5AZU04 4GB NAND Flash
- SA5AZU08 8GB NAND Flash
- SA5AZU16 16GB NAND Flash

Media transfer³

- Media Converter (video transfer)
- Windows Explorer (drag and drop)

Display

- Color LCD 320 x 240 pixels



Note

- Specifications are subject to change without notice.
- ¹ Rechargeable batteries have a limited number of charge cycles. Battery life and number of charge cycles vary by use and settings.
- ² 1GB = 1 billion bytes; available storage capacity is less. Full memory capacity may not be available as some memory is reserved for the player. Storage capacity is based on 4 minutes per song and 128 kbps MP3 encoding.
- ³ Transfer speed depends on operating system and software configuration.

System requirements

- Windows® XP (SP3 or above) / Vista / 7
- Pentium III 800 MHz processor or higher
- 512 MB RAM
- 500 MB hard disk space
- Internet connection
- Windows® Internet Explorer 6.0 or later
- CD-ROM drive
- USB port

