

PHILIPS

NORELCO

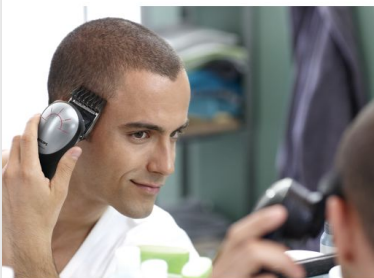
DIY cordless hair clipper

Easy Reach 180° rotating head

14 built-in length settings

60mins cordless use/1h charge

Head shave attachment



QC5580/40



Trim and shave your own hair with head shave attachment

The Philips Norelco Do-It-Yourself Clipper has a unique 180° rotating head reaches the most difficult spots, so you can give yourself a perfect & even haircut every time. Click on the head shave attachment for a completely smooth finish.

Easy-reach design

- 180° rotating head for easy reach.
- Head shave attachment for a perfectly smooth finish.

Performance

- 14 easy lock-in length settings from 0 to 15 mm.
- Precision comb for a short buzz style.
- Up to 60 min of cordless power after 1 hour quick-charge.
- 2-year guarantee, worldwide voltage

Easy to use

- Rounded tips and combs prevent skin irritation
- Self-sharpening blades
- Corded and cordless use
- Rubber grip for maximum control
- Battery light shows the battery status
- Fully washable for easy cleaning



asimpleswitch.com

Highlights

180° rotating head



The rotating head gives you total control over the clipper's angle, so you can turn the head to reach even the most difficult areas with ease.

Head shave attachment



Get a perfectly smooth shave without nicks or cuts. Simply clip on the head shave attachment for a flawless finish every time.

14 lock-in length settings



Turn the integrated zoom wheel beneath the clipper's head to select and lock in the length setting you want. Two combs provide length settings from 1mm to 15mm, with precisely 2mm between each length. Use the special precision comb for buzz cut...or use the clipper without a comb for a close 0.5mm trim.

Precision comb



Extra precision for the extra short hairstyles with a dedicated comb (lengths setting from 0.5mm to 3mm, with 0.5 mm steps).

Skin-friendly



The rounded edges on the blades and combs are designed to avoid scratching the skin for a more comfortable trim.

Corded & powerful cordless use



Use it cordless or plugged in.

Self-sharpening blades



The self-sharpening, stainless steel blades stay sharp longer and ensure top cutting performance.

Li-ion battery power



Use with or without cord for flexibility. The powerful lithium ion battery lasts for up to 60 minutes after a 1 hour charge. A quick 10 minute charge gives you 10 minutes of clipping time, so it's always ready when you are.

Battery light



Battery light glows white when full and blinks orange when 10 minutes remain.



asimpleswitch.com

Philips Green Logo

Philips Green Products can reduce costs, energy consumption and CO2 emissions. How? They offer a significant environmental improvement in one or more of the Philips Green Focal Areas – Energy efficiency, Packaging, Hazardous substances, Weight, Recycling and disposal and Lifetime reliability.

Specifications

Cutting system

Cutter width: 41 mm

Number of length settings: 14

Range of length settings: 0-15mm

Precision (size of steps): by 2 mm

Cutting element: Stainless steel blades

Balder attachment: 0 mm

Big comb: 3-15mm

Precision comb: 1-3 mm

Ease of use

Zoom wheel: Easily adjust length settings

Cleans under the tap

Adjustable guide combs

Display: Charging indicator

Power system

Battery type: Li-ion

Charging time: 1 hour

Running time: up to 60 minutes

Usage: Corded/cordless

Design

Shape: Ergonomic design

Accessories

Storage pouch

Cleaning brush

Balder attachment

Service

2-year worldwide guarantee

