

ESR6670 3G Wireless Router

Quick Start Guide

Please contact your local ISP for Internet access account detail including Username (or account) and Password. You may need to keep the information handy during the setup process.

Connect the supplied power-adaptor to the power inlet port and connect it to a wall outlet. Then, the router automatically enters the self-test phase. During self-test phase, Power LED will blink briefly, and then will be lit continuously to indicate that this product is in normal operation.

Minimum Requirements

- A standard CD-ROM drive
- 3G data card , ADSL or cable modem should be ready for Internet connection.
- Modem must provide RJ45 port to connect with ESR6670.
- Microsoft Windows compatible PC/Notebook with UPnP enabled network adapter
- CAT 5 network cable(s), RJ45 port on PC/Notebook.

STEP 1

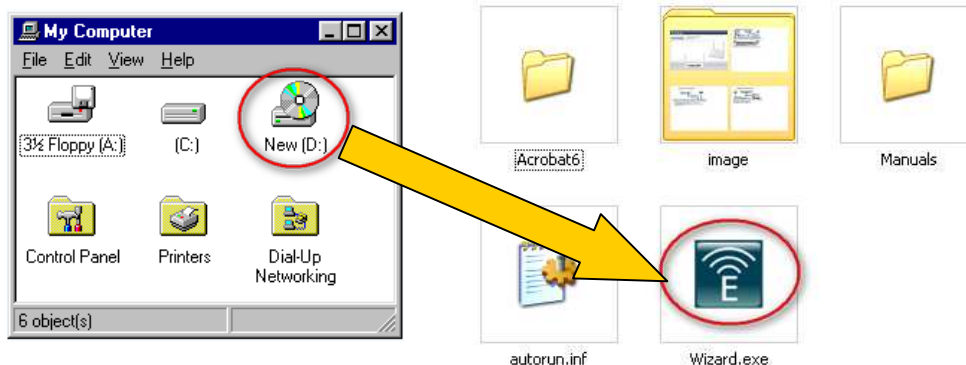
Power up the **device**.

Wait for POWER led on front panel lights up & remains stable.

STEP 2

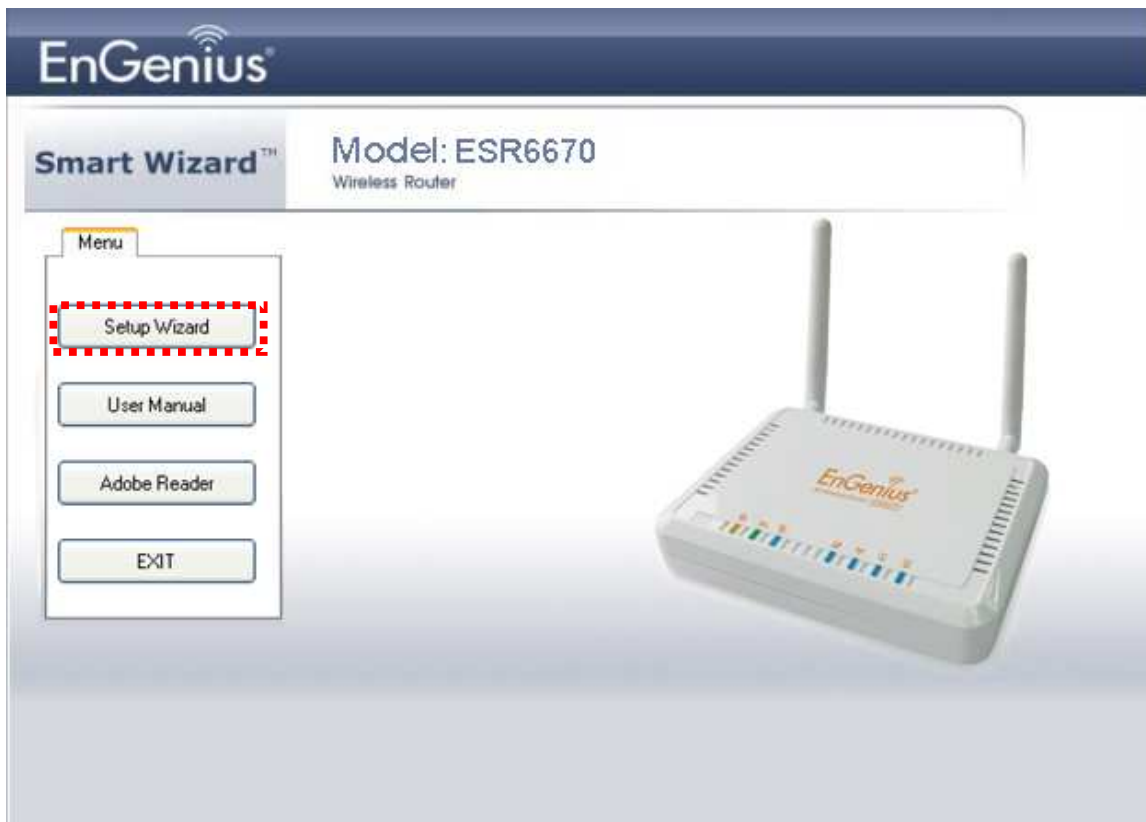
Insert **Wizard CD** into your CD-ROM drive and browse it with Windows Explorer.

Click on “**Wizard.exe**” to activate SMART WIZARD.



STEP 3

Click on [**Setup Wizard**] and follow the instruction given on the screen to complete the initial device configuration.



Please note that your 3G data card may take more than 20 seconds to initiate and respond to ESR6670. Please be patient and pay attention to the 3G LED on the top panel. Green Light on 3G LED signifies that your 3G card is ready.

Thank you for supporting EnGenius.