



Headband headphones

- DJ monitor style
- Black

SHL3300/28

Deep bass, defined sound

With DJ monitoring style

Engineered for uncompromised audio delivery, the SHL3300 features 40mm neodymium drivers and is equipped for 2200mW power - offering defined bass and precision sound with no distortion. Auto-return earshells rotate 165° for easy monitoring.

Benefits

The perfect listening experience

- 2200mW high power handling; no distortion even at high volume
- 40 mm neodymium speaker drivers for deep and defined bass
- Closed-back system blocks out ambient noise
- Single-sided DJ monitoring style for easy tuning in & out

Comfortable for long use

- Adjustable earshells and headband fits the shape of any head
- Breathable ear cushions for longer listening comfort
- Soft 95mm diameter cushions for extended comfort

- Wide, lightweight headband with EVA foam for comfortable fit

Convenient and durable

- 1.5m coiled cable for extra flexibility and durability
- Auto-return earpieces restores original positions after use
- Compact foldable design for easy storage on the go
- Tested with 8,000 cable bends for assured durability
- Earpieces swivel 165° for monitoring and added flexibility

PHILIPS

Features

1.5m coiled cable

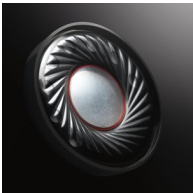


Enjoy greater freedom of movement with a 1.5m long coiled cable. The coil also reduces the strain on parts caused by pulling, while providing the extra length without the mess of entangled cables.

2200mW high power handling

High power handling hands you high performance – no matter what the volume, no matter what the source. Listen to all your music from MP3 players, smartphones, home audio devices and mixing boards. Even at high volumes, or with high audio input power, delivery is clear and distortion-free.

40mm neodymium drivers

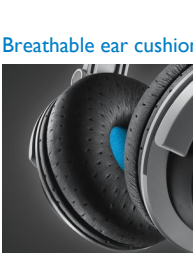


Neodymium drivers boast of an outstanding frequency response that imparts crisp high tones, and bass that is effortlessly extended and defined. Sound separation is also remarkably clear, letting you hear each note at precisely the right moment – for a professional touch to track mixing, or for immersive enjoyment of favorites on the go.

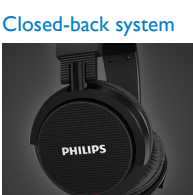
Adjustable earshells headband



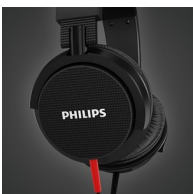
Auto-return earpieces



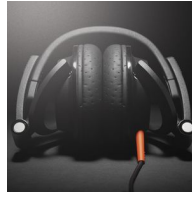
Breathable ear cushions



Closed-back system

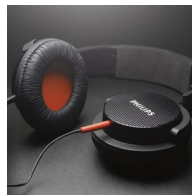


Compact foldable design



Made to give you the best experience on the go, the DJ monitoring style headphones can be folded away for perfect portability and easy storage. Clever design and careful selection of components, like the well-built hinges, allow the headphone parts to be maneuvered with ease. The SHL3100 can be folded flat, while the higher end SHL3200 and 3300 can be folded into more compact forms.

DJ monitoring style



Durable cable

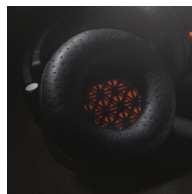
Engineered for robustness and performance, these headphones promise sound experiences that wouldn't let you down. Cable systems are developed to withstand strong tugging and repeated bending – stresses beyond those encountered in daily use. To ensure this, all cable designs undergo a rigorous test of 8,000 bends.

Earpieces swivel 165°



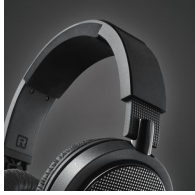
Designed with the professional DJ in mind, the earpieces on these headphones can each rotate 165° – for convenient one-ear listening while track mixing. The swivel can also be put to good use even in more casual listening, when temporary attention has to be paid to outside sounds.

Soft 95mm diameter cushions



Indulge in great sound no matter where you are. The 95mm diameter soft cushions create perfect sealing between your ears and the environment, providing excellent noise isolation and enhancing bass notes. Whether you are mixing tracks at a lively party, or simply enjoying favorites on your commute, the earshell cushions ensure you get the best out of your music.

Wide, lightweight headband



Everything about these headphones spells comfort – from the ergonomic design to the lightweight construction and use of superior materials. Even in

extended use, the exceptional comfort lets you enjoy your music to the fullest.

Specifications

Please note that this is a pre-sales leaflet. The contents of this leaflet reflect the best of our knowledge per date and country mentioned above. The contents of this leaflet are subject to change without notice. Philips does not accept any liability as to the contents of this leaflet.

Sound

Acoustic system	closed
Frequency response	18 - 25,000 Hz
Impedance	32 Ohm
Magnet type	Neodymium
Maximum power input	2200 mW
Sensitivity	108 dB
Speaker diameter	40 mm

Gross weight	0.9590096999999999 lb
EAN	00609585231399
Number of products included	1
Country of origin	CN
Harmonised Systems Code	851830

Connectivity

Cable Connection	one-sided
------------------	-----------

Packaging dimensions

Height	9.6456745 inch
Width	7.677169500000001 inch
Depth	4.1338605 inch
Nett weight	0.69886454 lb

Outer Carton

Length	24.803163 inch
Width	8.267721 inch
Height	10.8267775 inch
Gross weight	6.7902296 lb
EAN	10609585231396
Number of consumer packagings	6



data subject to change
2017, July 29

Version: 2.0.9
UPC: 00609585231399

© 2017 Koninklijke Philips N.V.
All rights reserved.

Specifications are subject to change without notice. Trademarks are the property of Koninklijke Philips N.V. or their respective owners.

www.philips.com