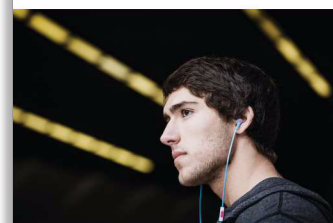




Philips
CitiScape In-Ear
Headphones

CitiScape collection
In-ear



SHE7055BR



Clear natural sound

with anti-tangle flat cable

Add zest to your life with CitiScape Indies' urban-cool colours, inspired by the most vibrant cities and hoods. Soft, noise-isolating ear caps seal in the amazingly clear sound and dynamic bass for a comfy and immersive experience.

Supreme comfort

- Choose from 3 pairs of ear caps for a perfect fit
- Ultra-small and snug earphones for a comfy fit

Stay connected to your music and friends

- Switch from music to phone calls with built-in microphone

Design for convenience

- Flat anti-tangle cable with slider to keep you tangle-free
- Rubberised cable relief enhances durability

Total sound immersion on the move

- Finely tuned 9-mm drivers deliver clear sound and dynamic bass
- Noise-isolating ear caps to block out the city noise

PHILIPS

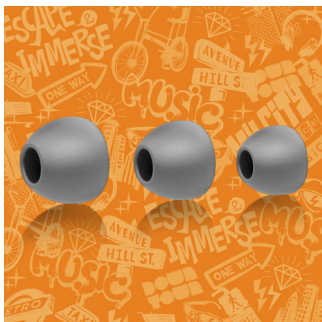
Highlights

Built-in microphone



Your CitiScape headphones feature a built-in microphone so you can easily switch from listening to music to taking phone calls. It's a breeze staying connected with your music — and with the people who matter most to you.

Choice of 3 pairs of ear caps



Your CitiScape in-ear headphones come with 3 pairs of ear caps so you can treat your ears to a perfect fit. The ear caps come in 3 sizes, from small to large, and they're all stylish yet superbly comfortable.

Finely tuned 9-mm drivers



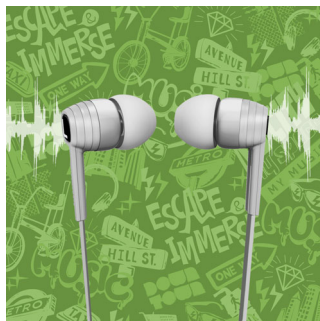
Finely tuned 9-mm drivers deliver clear sound and dynamic bass

Flat cable and slider



Flat anti-tangle cable with slider to keep you tangle-free

Noise-isolating ear caps



Noise-isolating ear caps to block out the city noise

Rubberised cable relief

Rubberised cable relief enhances durability to help extend the life of your headphones, a soft rubber where the cable connects the ear shell protects the connection from damage through repeated bending.

Ultra-small earphones

Ultra-small and snug earphones for a comfy fit

Specifications

Sound

- Acoustic system: Closed
- Diaphragm: PET
- Frequency response: 19 - 21 000 Hz
- Impedance: 16 Ohm
- Magnet type: Neodymium
- Type: Dynamic
- Voice coil: CCAW
- Sensitivity: 107 dB
- Speaker diameter: 8.6 mm
- Maximum power input: 25 mW

Design

- Colour: Teal

Connectivity

- Microphone: Built-in microphone
- Type of cable: OFC
- Cable Connection: two-parallel, symmetric
- Cable length: 1.2 m
- Finishing of connector: chrome-plated

Packaging dimensions

- Packaging dimensions (W x H x D): 9.5 x 17.5 x 2 cm
- Packaging dimensions (W x H x D): 3.7 x 6.9 x 0.8 inch
- Net weight: 0.013 kg
- Net weight: 0.029 lb
- Gross weight: 0.0502 kg
- Gross weight: 0.111 lb
- Tare weight: 0.0372 kg
- Tare weight: 0.082 lb
- EAN: 69 23410 71983 3
- Type of shelf placement: Soother
- Number of products included: 1
- Packaging type: Soother

Outer Carton

- Outer carton (L x W x H): 38 x 16 x 25 cm
- Outer carton (L x W x H): 150 x 6.3 x 9.8 inch
- Net weight: 0.312 kg
- Net weight: 0.688 lb
- Gross weight: 1.73 kg
- Gross weight: 3.814 lb
- Tare weight: 1.418 kg
- Tare weight: 3.126 lb
- GTIN: 1 69 23410 71983 0
- Number of consumer packages: 24

Inner Carton

- Inner carton (L x W x H): 18 x 7 x 10.5 cm
- Inner carton (L x W x H): 7.1 x 2.8 x 4.1 inch
- Net weight: 0.039 kg
- Net weight: 0.086 lb
- Gross weight: 0.182 kg
- Gross weight: 0.401 lb
- Tare weight: 0.143 kg
- Tare weight: 0.315 lb
- GTIN: 2 69 23410 71983 7
- Number of consumer packages: 3

Product dimensions

- Product dimensions (W x H x D): 2,2 x 2,4 x 1,2 cm
- Product dimensions (W x H x D): 0,9 x 0,9 x 0,5 inch
- Weight: 0.0127 kg
- Weight: 0.028 lb



Issue date 2017-01-15

Version: 4.1.9

12 NC: 8670 001 01751
EAN: 06 92341 07198 33

© 2017 Koninklijke Philips N.V.
All Rights reserved.

Specifications are subject to change without notice.
Trademarks are the property of Koninklijke Philips N.V.
or their respective owners.

www.philips.com