

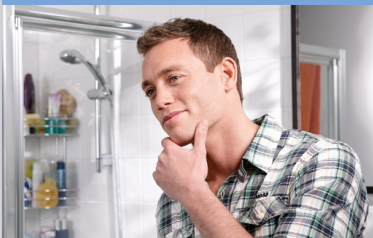
PHILIPS

Shaver series 3000

Dry electric shaver

Lift & Cut Flexing heads

45 min cordless use/8h charge



PT721/14



Lift&Cut

For a close shave

The Philips PowerTouch adds power to your morning. Plug it in and you'll never run out of power. Lift and Cut blades give you a close shave. With PowerTouch you'll always fly through your morning routine.

A comfortable and close end result

- Lift & Cut blades lift hairs to cut for a close shave
- Flex & Float adjusts to face and neck curves
- Super Lift & Cut blades raise hairs to cut closer

The fastest way through your morning routine

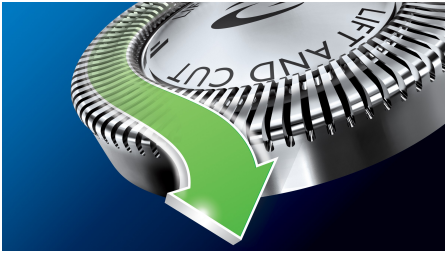
- 45+ shaving minutes, 8-hour charge
- Simply rinses clean
- Can be used corded and cordless
- LED Display



asimpleswitch.com

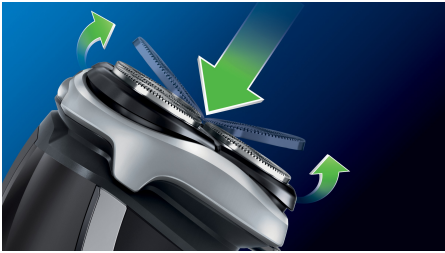
Highlights

Lift & Cut blades



The Lift & Cut dual blade system lifts hairs to cut comfortably below skin level.

Flex & Float



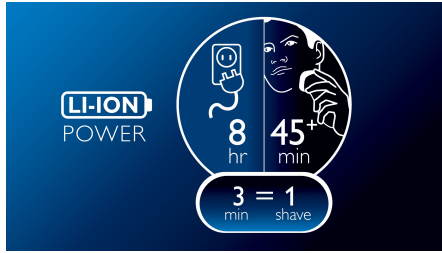
Automatically adjusts to every curve of your face and neck for a smoother shave.

Super Lift & Cut action



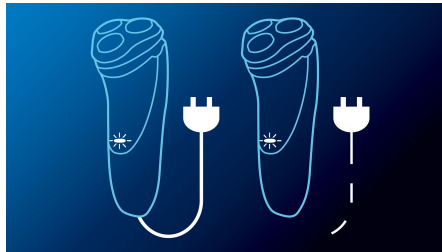
The first blade raises each hair while the second blade comfortably cuts below skin level, for really smooth results.

45+ shaving minutes



An energy-efficient, powerful lithium-ion battery gives you more shaves per charge. You'll have 45+ minutes of shaving time - that's around 15 shaves - after 8 hours of charging. Plug it in for 3 minutes and you'll have enough power for one shave.

Efficient power System



Can be used corded and cordless

Fully washable shaver



Simply pop the heads open, and rinse thoroughly under the tap.

LED Display



Indicates: Battery full, Battery low, Charging, Replace shaving heads, Quick charge



asimpleswitch.com

Philips Green Logo

Philips Green Products can reduce costs, energy consumption and CO2 emissions. How? They offer a significant environmental improvement in one or more of the Philips Green Focal Areas – Energy efficiency, Packaging, Hazardous substances, Weight, Recycling and disposal and Lifetime reliability.

Specifications

Shaving Performance

Shaving system: Lift & Cut blades

Contour-following: Flex & Float System

Ease of use

Display: 2 LED indicator

Cleaning: Fully washable shaver, QuickRinse hair chamber

Shaving time: 45+ minutes, up to 15 shaves

Charging time: 8 hours, 3 min quick charge for 1 shave

Display indicates: Battery full, Battery low, Charging, Quick charge, Replace shaving

heads

Operation: Corded and cordless, Rechargeable battery

Design

Handle: Anti-slip, Ergonomic Easy Grip, Rubber

Accessories

Maintenance: Cleaning brush, Protective cap

Service

Replacement head: HQ8 has been replaced by SH50

Guarantee: 2-year guarantee

Replacement heads: Replace every 2 yrs with HQ8

Power

Automatic voltage: 100–240 V

Battery type: Lithium-ion

Max power consumption: 5.4 W

Stand-by power: < 0.25 W

