

# PHILIPS

Electric shaver

7000 series

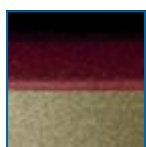
Mains version

7300 Series



**Ultra thin  
shaving heads**

HQ7300



## Comfortably close

Shaves even the shortest hairs

This fully washable shaver allows you to rinse the shaver under the tap every time after use. You can count on a comfortable and close shave every day.

### **Shaves even the shortest stubble**

- Precision Cutting System

### **Adjusts to every curve of your face and neck**

- Reflex Action system

### **Smooth skin contact**

- Comfort shaving heads

### **Comfortably close**

- Super Lift & Cut technology

### **Moustache and sideburn trimming**

- Spring-released pop-up trimmer

# Highlights

## Precision Cutting System



The Philips shaver has ultra-thin heads with slots to shave long hairs and holes to shave the shortest stubble.

## Reflex Action system



Automatically adjusts to every curve of your face and neck.

## Comfort shaving heads



The skin friendly profile of these Philips shaving heads enables smooth skin contact for a comfortable shave.

## Super Lift & Cut technology



The dual blade system of this electric shaver lifts hairs to cut comfortably below skin level.

## Pop-up trimmer



Full width, pop-up trimmer is perfect for grooming sideburns and moustache.

## Washable shaver



The waterproof shaver can be easily rinsed under the tap.

# Specifications

## Shaving Performance

**Shaving system:** Precision Cutting System, Super Lift & Cut technology

**Contour following:** Reflex Action system, Individual floating heads

**SkinComfort:** Comfort shaving heads

## Ease of use

**Charging:** Corded

**Cleaning:** Washable

## Design

**Finishing:** Varnish

## Accessories

**Maintenance:** Cleaning brush, Protective cap

## Service

**Replacement head:** Replace every yr with HQ8

