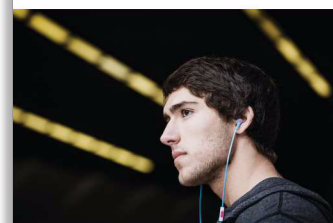




Philips CitiScape Indies  
CitiScape In-Ear  
Headphones

8.6-mm drivers/closed-back  
In-ear



SHE7050BK



## Clear natural sound

with anti-tangle flat cable

Add zest to your life with CitiScape Indies' urban-cool colours, inspired by the most vibrant cities and hoods. Soft, noise-isolating ear caps seal in the amazingly clear sound and dynamic bass for a comfy and immersive experience.

### Supreme comfort

- Choose from 3 pairs of ear caps for a perfect fit
- Ultra-small and snug earphones for a comfy fit

### Total sound immersion on the move

- Finely tuned 9-mm drivers deliver clear sound and dynamic bass
- Noise-isolating ear caps to block out the city noise

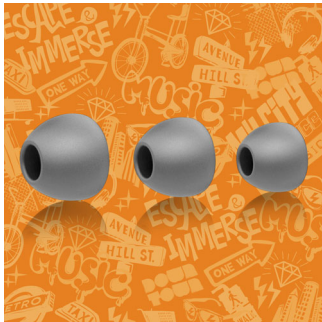
### Design for convenience

- Flat anti-tangle cable with slider to keep you tangle-free
- Rubberised cable relief enhances durability

# PHILIPS

# Highlights

## Choice of 3 pairs of ear caps



Your CitiScape in-ear headphones come with 3 pairs of ear caps so you can treat your ears to a perfect fit. The ear caps come in 3 sizes, from small to large, and they're all stylish yet superbly comfortable.

## Finely tuned 9-mm drivers



Finely tuned 9-mm drivers deliver clear sound and dynamic bass

## Flat cable and slider



Flat anti-tangle cable with slider to keep you tangle-free

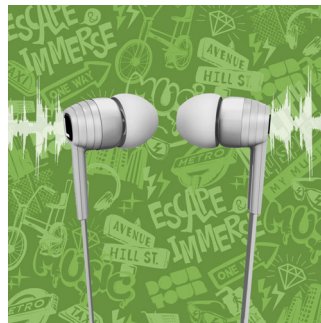
## Rubberised cable relief

Rubberised cable relief enhances durability to help extend the life of your headphones, a soft rubber where the cable connects the ear shell protects the connection from damage through repeated bending.

## Ultra-small earphones

Ultra-small and snug earphones for a comfy fit

## Noise-isolating ear caps



Noise-isolating ear caps to block out the city noise

# Specifications

## Sound

- Acoustic system: Closed
- Diaphragm: PET
- Frequency response: 8 - 23,000 Hz
- Impedance: 16 Ohm
- Magnet type: Neodymium
- Type: Dynamic
- Sensitivity: 107 dB
- Speaker diameter: 8.6 mm
- Maximum power input: 25 mW
- Voice coil: CCAW

## Design

- Colour: Black

## Connectivity

- Type of cable: OFC
- Cable Connection: two-parallel, symmetric
- Cable length: 1.2 m
- Finishing of connector: chrome-plated

## Packaging dimensions

- Packaging dimensions (W x H x D): 9.5 x 17.5 x 2 cm
- Packaging dimensions (W x H x D): 3.7 x 6.9 x 0.8 inch
- Net weight: 0.013 kg
- Net weight: 0.029 lb
- Gross weight: 0.0502 kg
- Gross weight: 0.111 lb
- Tare weight: 0.0372 kg
- Tare weight: 0.082 lb
- EAN: 69 23410 71904 8
- Type of shelf placement: Soother
- Number of products included: 1
- Packaging type: Soother

## Outer Carton

- Outer carton (L x W x H): 38 x 16 x 25 cm
- Outer carton (L x W x H): 150 x 6.3 x 9.8 inch
- Net weight: 0.312 kg
- Net weight: 0.688 lb
- Gross weight: 1.73 kg
- Gross weight: 3.814 lb
- Tare weight: 1.418 kg
- Tare weight: 3.126 lb
- GTIN: 1 69 23410 71904 5
- Number of consumer packages: 24

## Inner Carton

- Inner carton (L x W x H): 18 x 7 x 10.5 cm
- Inner carton (L x W x H): 7.1 x 2.8 x 4.1 inch
- Net weight: 0.039 kg
- Net weight: 0.086 lb
- Gross weight: 0.182 kg
- Gross weight: 0.401 lb
- Tare weight: 0.143 kg
- Tare weight: 0.315 lb
- GTIN: 2 69 23410 71904 2
- Number of consumer packages: 3

## Product dimensions

- Product dimensions (W x H x D): 2.2 x 2.4 x 1.2 cm
- Product dimensions (W x H x D): 0.9 x 0.9 x 0.5 inch
- Weight: 0.0127 kg
- Weight: 0.028 lb



Issue date 2016-12-07

Version: 3.2.8

12 NC: 8670 001 00767  
EAN: 06 92341 07190 48

© 2016 Koninklijke Philips N.V.  
All Rights reserved.

Specifications are subject to change without notice.  
Trademarks are the property of Koninklijke Philips N.V.  
or their respective owners.

[www.philips.com](http://www.philips.com)