



## Clear natural sound

with anti-tangle flat cable

Add zest to your life with CitiScape Indies' urban-cool colors, inspired by the most vibrant cities and hoods. Soft, noise-isolating ear caps seal in the amazingly clear sound and dynamic bass for a comfy and immersive experience.

### Supreme comfort

- Choose from 3 pairs of ear caps for a perfect fit
- Ultra small and snug earphones for a comfy fit

### Total sound immersion on the move

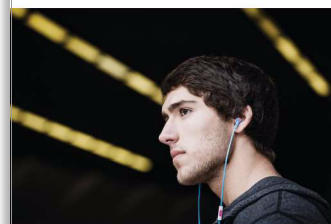
- Finely tuned 9mm drivers deliver clear sound & dynamic bass
- Noise isolating ear caps to block out the city's noise

### Design for convenience

- Flat anti-tangle cable with slider to keep you tangle-free
- Rubberized cable relief enhances durability

Philips CitiScape Indies  
CitiScape In-Ear  
Headphones

8.6mm drivers/closed-back  
In-ear



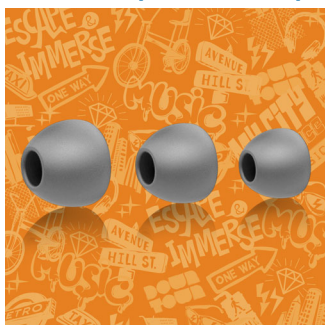
SHE7050BK



# PHILIPS

# Highlights

## Choice of 3 pairs of ear caps



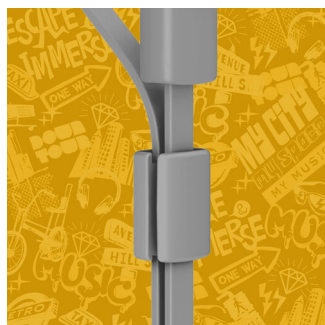
Your CitiScape in-ear headphones come with 3 pairs of ear caps so you can treat your ears to a perfect fit. The ear caps come in 3 sizes, from small to large – and are all stylish yet superbly comfortable.

## Finely tuned 9mm drivers



Finely tuned 9mm drivers deliver clear sound & dynamic bass

## Flat cable & slider



Flat anti-tangle cable with slider to keep you tangle-free

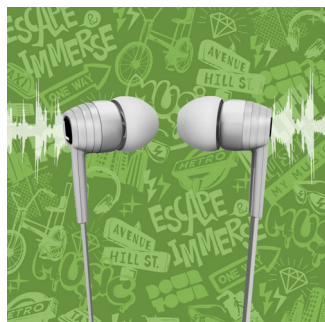
## Rubberized cable relief

Rubberized cable relief enhances durability to help extend the life of your headphones, a soft rubber where the cable connects the ear shell protects the connection from damage through repeated bending.

## Ultra-small earphones

Ultra small and snug earphones for a comfy fit

## Noise isolating ear caps



Noise isolating ear caps to block out the city's noise

# Specifications

## Sound

- Acoustic system: Closed
- Diaphragm: PET
- Frequency response: 8 - 23 000 Hz
- Impedance: 16 Ohm
- Magnet type: Neodymium
- Type: Dynamic
- Sensitivity: 107 dB
- Speaker diameter: 8.6 mm
- Maximum power input: 25 mW
- Voice coil: CCAW

## Design

- Color: Black

## Connectivity

- Type of cable: OFC
- Cable Connection: two-parallel, symmetric
- Cable length: 1.2 m
- Finishing of connector: chrome-plated

## Packaging dimensions

- Packaging dimensions (W x H x D): 9,5 x 17,5 x 2 cm
- Packaging dimensions (W x H x D): 3,7 x 6,9 x 0,8 inch
- Nett weight: 0,013 kg
- Nett weight: 0,029 lb
- Gross weight: 0,0502 kg
- Gross weight: 0,111 lb
- Tare weight: 0,0372 kg
- Tare weight: 0,082 lb
- EAN: 69 23410 71904 8
- Type of shelf placement: Dummy
- Number of products included: 1
- Packaging type: Dummy

## Outer Carton

- Outer carton (L x W x H): 38 x 16 x 25 cm
- Outer carton (L x W x H): 15,0 x 6,3 x 9,8 inch
- Nett weight: 0,312 kg
- Nett weight: 0,688 lb
- Gross weight: 1,73 kg
- Gross weight: 3,814 lb
- Tare weight: 1,418 kg
- Tare weight: 3,126 lb
- GTIN: 1 69 23410 71904 5
- Number of consumer packagings: 24

## Inner Carton

- Inner carton (L x W x H): 18 x 7 x 10,5 cm
- Inner carton (L x W x H): 7,1 x 2,8 x 4,1 inch
- Nett weight: 0,039 kg
- Nett weight: 0,086 lb
- Gross weight: 0,182 kg
- Gross weight: 0,401 lb
- Tare weight: 0,143 kg
- Tare weight: 0,315 lb
- GTIN: 2 69 23410 71904 2
- Number of consumer packagings: 3

## Product dimensions

- Product dimensions (W x H x D): 2,2 x 2,4 x 1,2 cm
- Product dimensions (W x H x D): 0,9 x 0,9 x 0,5 inch
- Weight: 0,0127 kg
- Weight: 0,028 lb



Issue date 2016-07-15

Version: 3.2.8

12 NC: 8670 001 00767  
EAN: 06 92341 07190 48

© 2016 Koninklijke Philips N.V.  
All Rights reserved.

Specifications are subject to change without notice.  
Trademarks are the property of Koninklijke Philips N.V.  
or their respective owners.

[www.philips.com](http://www.philips.com)