

# PHILIPS

## Hairdryer

ThermoProtect

2100W



HP8230/03



## Fast dry at a lower temperature with ThermoProtect with 14mm styling nozzle.

Protect your hair while still enjoying fast drying results. Choose from multiple speed and temperature settings to get the blow dry you want or select ThermoProtect for fast drying at a constant caring temperature.

### Beautifully styled hair

- Professional 2100W for perfect salon results
- Cool Shot sets your style
- Perfect styling results with a slim styling nozzle
- Six flexible speed and temperature settings for full control

### Less Hair Damage

- ThermoProtect temperature setting

### Easy to use

- Easy storage hook for convenient storage
- 1.8 m power cord
- Removeable air flow filter makes cleaning quick and easy



[asimpleswitch.com](https://asimpleswitch.com)

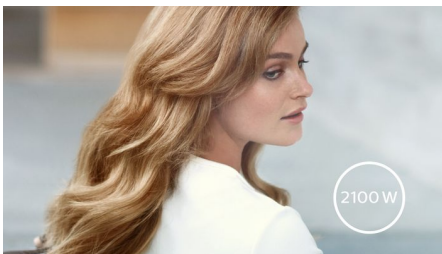
# Highlights

## Cool Shot



A must-have professional function for hair stylists. The Cool Shot button provides an intense burst of cold air. It is used after styling to finish and set the style.

## Professional 2100W



This 2100W professional hairdryer creates a powerful airflow. The resulting combination of power and speed makes drying and styling your hair quicker and easier.

## Easy storage hook



The rubberised hook is located at the base of the handle and provides another storage option, particularly convenient for use in the home or when staying at a hotel.

## Slim styling nozzle



Perfect styling results and a shiny, polished look with a slim styling nozzle for precise styling.

## ThermoProtect temperature



The ThermoProtect temperature provides the optimal drying temperature and gives additional protection from overheating the hair. With the same powerful airflow, you will get the best results in a caring way.

## 1.8 m cord



Convenient to use thanks to the 1.8m power cord length.

## Removeable air inlet filter



The removeable air flow filter of your hairdryer is easy to maintain. Simply click off to clean. Doing this regularly will prevent build up of dust and hair that can affect drying performance.

## Speed and temperature settings



The speed and heat required can be easily adjusted to create the perfect style. Six different settings ensure full control for precise and tailored styling.



[asimpleswitch.com](https://www.asimpleswitch.com)

## Philips Green Logo

Philips Green Products can reduce costs, energy consumption and CO2 emissions. How? They offer a significant environmental improvement in one or more of the Philips Green Focal Areas – Energy efficiency, Packaging, Hazardous substances, Weight, Recycling and disposal and Lifetime reliability.

# Specifications

## Technical specifications

Voltage: 220-240 V

Frequency: 50-60 Hz

Wattage: 2100 W

Power: 2100 W

Color/finishing: High Gloss & Mat Black

Housing material: ABS

Motor: DC Motor

Cord length: 1.8 m

## Features

Foldable handle: No

Cool shot

Dual voltage: No

Travel pouch: No

Ceramic coating: No

Ion conditioning: No

Hanging loop

Diffuser: No

Nozzle / Concentrator: Slim styling 14mm nozzle

Number of attachments: 1

## Service

2-year guarantee

## Weight & dimensions

A-Box Dimensions: Length = 63cm, Width = 35cm, Height = 25cm

A-Box Weight: 5.7kg

F-Box Dimensions: Depth = 11cm, Height = 23cm, Width = 31cm

F-Box weight: 0.8kg

Product size: Width = 22cm, Height = 31cm, Length = 10cm

Product weight (excl. pack): 0.6kg

