



Philips  
Straightener

**SalonStraight**

Ceramic  
Active Ion

**HP8310**



# Let it shine!

## SalonStraight Active ION

Ion Conditioning

### **Beautifully styled hair**

- 210°C professional high heat for perfect salon results
- Ion Conditioning for shiny, frizz-free hair

### **Less hair damage**

- Ceramic plates for smooth gliding and shiny hair

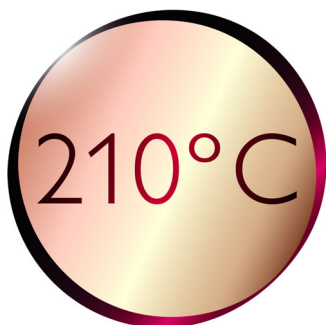
### **Ease of use**

- Fast heat-up time, ready to use in 60 seconds
- Automatic shut-off after 60 min
- Easy lock for convenient storage
- Swivel cord to prevent tangled wires
- 1.8 m cord for maximum flexibility
- Universal voltage

# PHILIPS

# Highlights

## 210C professional high heat



210C professional high heat for perfect, salon-straight results

## Instant heat up



The straightener has a fast heat-up time, being ready to use in 60 seconds

## Easy lock



Easy lock for convenient storage

## Ion Conditioning



Ion Conditioning for shiny, frizz-free hair

## Safe usage



Some hair straighteners and curling irons have been equipped with an automatic shut-off feature. This feature has been designed to provide peace of mind. If left on, the appliance will automatically switch off after 60 min.

## Swivel cord



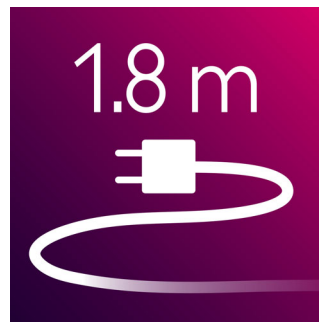
Useful swivel cord technology rotates the cord to prevent tangled wires.

## Ceramic plates



Ceramic plates for smooth gliding and shiny hair

## 1.8 m cord



1.8 m cord for maximum flexibility

# Specifications

## Technical specifications

- Cord length: 1.8 m
- Maximum temperature: 210 °C
- Heating time: 60s
- Voltage: 110-240 V

## Features

- Ceramic coating
- Swivel cord

## Hair type

- End result: Straight
- Hair length: Long, Medium, Short
- Hair thickness: Medium, Thick, Thin

## Service

- 2-year worldwide guarantee



Issue date 2016-05-27

Version: 5.0.1

© 2016 Koninklijke Philips N.V.  
All Rights reserved.

Specifications are subject to change without notice.  
Trademarks are the property of Koninklijke Philips N.V.  
or their respective owners.

[www.philips.com](http://www.philips.com)