

PHILIPS

Beardtrimmer series
9000

waterproof beard
trimmer

0.2mm precision settings
Full metal dual-sided trimmer
60mins cordless use/1h charge
with laser guide



BT9290/32



Ultimate precision

The only beard trimmer with a laser guide

Experience superb control on contours with the exclusive laser guide. It allows you to create the precise and symmetric style you want with confidence.

Precision

- Use the unique laser guide for precise, symmetric results
- The zoom wheel 'locks in' your chosen length setting
- Dual-sided trimmer: 32mm and 15mm sides for perfect details
- The 0.4mm stubble setting gives you a 3-day beard every day

Skin-friendly performance

- Skin-friendly, high-performance blades for the perfect trim

Easy to use

- 100% waterproof for easy cleaning
- Detail comb for precision, and beard comb for control
- The LED display clearly shows your chosen length setting
- LED display shows the battery level
- 2 year warranty, worldwide voltage and no need to oil
- Protective pouch for travel and storage
- 60 minutes cordless use after a 1-hour charge, or plug it in



asimpleswitch.com

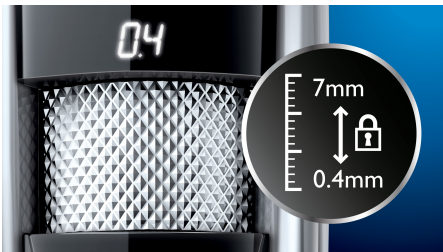
Highlights

World's first laser guide



The unique laser guidance system projects a sharp line of light to pre-align your style before you trim. It will point out where the hairs will be cut so you get it right every time.

17 lock-in length settings



To select your preferred trim length, just turn the zoom wheel on the handle until the length you want is displayed. Your chosen length is now 'locked in' for a precise and even trim.

Dual-Sided trimmer



Take off the adjustable length comb, and there's a reversible, dual-sided precision trimmer underneath. One side is a 32mm high-performance trimmer. Turn it around, and there's a 15mm-wide precision trimmer – perfect for getting into small spaces, like under your nose or around your mouth. It's designed to cut very close while still protecting your skin, and its small size and angled design make it easy to see what you are doing for fine lines and details.

Skin-friendly high performance



The steel blades lightly brush against each other, so they sharpen themselves as you trim! The blades stay extra-sharp to always cut hairs neatly and effectively, but have rounded blade tips and combs to prevent skin irritation.

Rechargeable and corded use



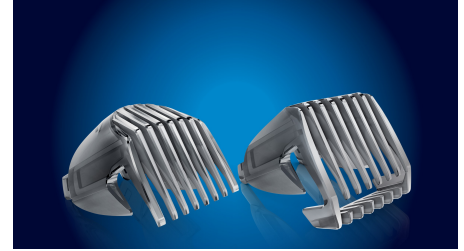
You get 60 minutes of cordless use after a 1-hour charge. If you run out of battery power while trimming, just plug it in and keep trimming.

100% waterproof



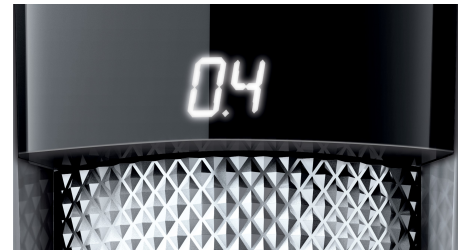
To clean the trimmer head, simply rinse it under the tap.

Detail and beard combs



The detail comb gives you more precision as you trim. Use it instead of the beard comb to get into tight spots, or to round off the edges of your beard. The beard comb gives you more control for a fast and even trim.

LED display



The LED display shows your chosen length setting in millimeters, so you're always in control of your style.

LED battery level indicator

The LED display indicates the battery level, so you're never caught short.

Perfect 3-day beard every day



If you want a perfect 3-day beard, just use the trimmer's shortest setting of 0.4mm. For a perfectly groomed longer beard, simply adjust the setting to the exact length you need.

Specifications

Accessories

Beard comb

Detail Comb

Maintenance: Cleaning brush

Pouch

Ease of use

Cleaning: 100% Waterproof

Battery Run time: 1 hour charge 60 mins runtime

Operation: Corded & Cordless use

Precision

Length Settings: 17 Length from 0.4 mm to 7 mm

Power

Automatic voltage: 100-240 V

Service

Guarantee: 2 - Year Worldwide Guarantee

