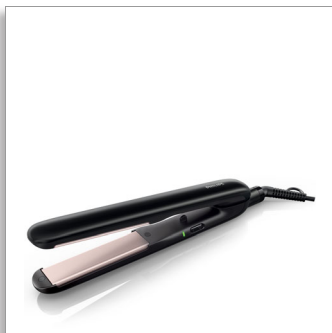




Philips  
Essential Care

Longer plates (100mm)  
210°C professional temperature  
Ceramic plates



HP8319/00

## Easy straight and shine

with 100mm long plates

Specially designed for speed and ease of use, the longer plates of the new Essential Care straightener allow you to get the straight look you want faster, while being gentle on your hair.

### Beautifully styled hair

- Long plates for fast and easy straightening
- 210°C professional high heat for perfect results

### Less hair damage

- Ceramic coating for ultra-smooth gliding

### Ease of use

- Closing lock to close the handle for easy and safe storage
- 1.8 m power cord
- Fast heat up time, ready to use in 60 seconds
- Universal voltage
- Swivel cord to prevent tangled wires
- 2 years of worldwide guarantee

**PHILIPS**

# Highlights

## Long plates



The longer plates enable a better contact with the hair and help you achieve perfect straightening results in less time.

## 210°C professional temperature



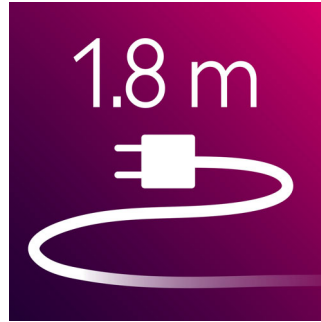
This high temperature enables you to change the shape of your hair and gives you that perfect look you want.

## Instant heat up



The straightener has a fast heat up time, being ready to use in 60 seconds

## 1.8 m cord



1.8 m power cord

## Handle closing lock



The straightener has a closing lock mechanism. Located at the base of the straightener, this locks plates, making storage quick and easy and helping to protect the straightener from accidental damage.

## Universal voltage



Worldwide voltage for getting the perfect travel companion

## Swivel cord

Useful swivel cord technology rotates the cord to prevent tangled wires.

## 2 years guarantee



2 years of worldwide guarantee.

## Ceramic coating



The smooth ceramic coated plates prevent damage to your hair during styling.

# Specifications

## Technical specifications

- Heating time: 60s
- Cord length: 1.8 m
- Color/finishing: black and silvertint
- Maximum temperature: 210 °C
- Long plates: 27x100mm
- Voltage: Worldwide V

- Swivel cord
- Ceramic coating
- Ion conditioning: No
- Handle lock
- Material plates: Ceramic
- Storage hook
- Swivel cord

## Features

- Temperature: 210 °C

## Service

- 2-year worldwide guarantee



Issue date 2018-03-28

Version: 6.1.1

EAN: 08 71010 36564 49

© 2018 Koninklijke Philips N.V.  
All Rights reserved.

Specifications are subject to change without notice.  
Trademarks are the property of Koninklijke Philips N.V.  
or their respective owners.

[www.philips.com](http://www.philips.com)