

# Always there to help you

Register your product and get support at [www.philips.com/support](http://www.philips.com/support)



BTD7170



- EN Short User Manual
- CS Krátká uživatelská příručka
- DA Kort brugervejledning
- DE Kurzanleitung
- EL Σύντομο εγχειρίδιο χρήσης
- ES Manual de usuario corto
- FI Lyhyt käyttöopas
- FR Bref mode d'emploi
- HU Rövid használati útmutató
- IT Manuale dell'utente breve

PHILIPS

**EN** Before using your product, read all accompanying safety information.  
**ES** Pread puzbitm vrbouku a pfebeite pfbalebn bezpebnostn informac.  
**DA** Fr du bruger produktet, skal du lase alle medflegende sikkerhedsoplysninger.  
**DE** Lesen Sie vor der ersten Verwendung Ihres Produktes alle beiliegenden Sicherheitsinformationen.  
**EL** Πριν χρησιμοποιήσετε τη συσκευή, διαβάστε όλες τις συνοδευτικές οδηγίες ασφαλείας.  
**ES** Antes de utilizar el producto, lea toda la información de seguridad que se adjunta.  
**FI** Lue kaikki turvallisuustiedot ennen tuotteen käyttöä.  
**HU** Avant d'utiliser votre produit, lisez toutes les informations sur la sécurité fournies.  
**IT** A termék használatá előtt olvassa el az alhoz tartozó összes biztonsági tudnivalót.  
**IT** Prima di usare il prodotto, leggere tutte le relative informazioni sulla sicurezza.

**1** Connect the receiver to the TV using the provided cables.  
**2** Connect the receiver to the TV using the provided cables.  
**3** Connect the receiver to the TV using the provided cables.

**1** Connect the receiver to the TV using the provided cables.  
**2** Connect the receiver to the TV using the provided cables.  
**3** Connect the receiver to the TV using the provided cables.

**1** Connect the receiver to the TV using the provided cables.  
**2** Connect the receiver to the TV using the provided cables.  
**3** Connect the receiver to the TV using the provided cables.

**1** Switch to standby mode.  
**2** Přepnutí do pohotovostního režimu.  
**3** Sluit it standbystand.  
**4** Wechseln in den Standby-Modus.  
**5** Μετάβαση σε Αεριοπύλη αναμονής.  
**6** Activación del modo de espera.  
**7** Siirtenen valmiustilan.  
**8** Activation du mode veille.  
**9** Készletlen üzemmódba kapcsolás.  
**10** Passaggio alla modalità standby.  
**11** Switch to ECO standby mode.  
**12** Přepnutí do pohotovostního režimu Eco.  
**13** Sluit it Eco-standbystand.  
**14** Wechseln in den ECO Power Standby-Modus.  
**15** Μετάβαση σε Αεριοπύλη αναμονής ECO.  
**16** Cómo pasar a modo de espera de bajo consumo.  
**17** ECO-vmälistilan siirtminen.  
**18** Pour activer le mode veille économique d'énergie.  
**19** ECO készletlen üzemmódba váltás.  
**20** Passaggio alla modalità ECO Standby.

**1** Connect the receiver to the TV using the provided cables.  
**2** Connect the receiver to the TV using the provided cables.  
**3** Connect the receiver to the TV using the provided cables.

**1** Connect the receiver to the TV using the provided cables.  
**2** Connect the receiver to the TV using the provided cables.  
**3** Connect the receiver to the TV using the provided cables.

**1** Connect the receiver to the TV using the provided cables.  
**2** Connect the receiver to the TV using the provided cables.  
**3** Connect the receiver to the TV using the provided cables.

**1** Connect the receiver to the TV using the provided cables.  
**2** Connect the receiver to the TV using the provided cables.  
**3** Connect the receiver to the TV using the provided cables.

**1** Connect the receiver to the TV using the provided cables.  
**2** Connect the receiver to the TV using the provided cables.  
**3** Connect the receiver to the TV using the provided cables.

**1** Connect the receiver to the TV using the provided cables.  
**2** Connect the receiver to the TV using the provided cables.  
**3** Connect the receiver to the TV using the provided cables.

2014 ©WOOX Innovations Limited. All rights reserved. This product was brought to the market by WOOX Innovations Limited or one of its affiliates, further referred to in this document as WOOX Innovations, and is the manufacturer of the product. WOOX Innovations is the warrantor in relation to the product with which this booklet was packaged. Philips and the Philips Shield Emblem are registered trademarks of Koninklijke Philips N.V.

BTD7170\_12\_Short User Manual\_V5.0

**1** Connect the receiver to the TV using the provided cables.  
**2** Connect the receiver to the TV using the provided cables.  
**3** Connect the receiver to the TV using the provided cables.

**1** Connect the receiver to the TV using the provided cables.  
**2** Connect the receiver to the TV using the provided cables.  
**3** Connect the receiver to the TV using the provided cables.

**1** Connect the receiver to the TV using the provided cables.  
**2** Connect the receiver to the TV using the provided cables.  
**3** Connect the receiver to the TV using the provided cables.

**1** Connect the receiver to the TV using the provided cables.  
**2** Connect the receiver to the TV using the provided cables.  
**3** Connect the receiver to the TV using the provided cables.

**1** Connect the receiver to the TV using the provided cables.  
**2** Connect the receiver to the TV using the provided cables.  
**3** Connect the receiver to the TV using the provided cables.

**1** Connect the receiver to the TV using the provided cables.  
**2** Connect the receiver to the TV using the provided cables.  
**3** Connect the receiver to the TV using the provided cables.

**1** Connect the receiver to the TV using the provided cables.  
**2** Connect the receiver to the TV using the provided cables.  
**3** Connect the receiver to the TV using the provided cables.

**1** Connect the receiver to the TV using the provided cables.  
**2** Connect the receiver to the TV using the provided cables.  
**3** Connect the receiver to the TV using the provided cables.

**1** Connect the receiver to the TV using the provided cables.  
**2** Connect the receiver to the TV using the provided cables.  
**3** Connect the receiver to the TV using the provided cables.

**1** Connect the receiver to the TV using the provided cables.  
**2** Connect the receiver to the TV using the provided cables.  
**3** Connect the receiver to the TV using the provided cables.

**1** Connect the receiver to the TV using the provided cables.  
**2** Connect the receiver to the TV using the provided cables.  
**3** Connect the receiver to the TV using the provided cables.

**1** Connect the receiver to the TV using the provided cables.  
**2** Connect the receiver to the TV using the provided cables.  
**3** Connect the receiver to the TV using the provided cables.

**1** Connect the receiver to the TV using the provided cables.  
**2** Connect the receiver to the TV using the provided cables.  
**3** Connect the receiver to the TV using the provided cables.

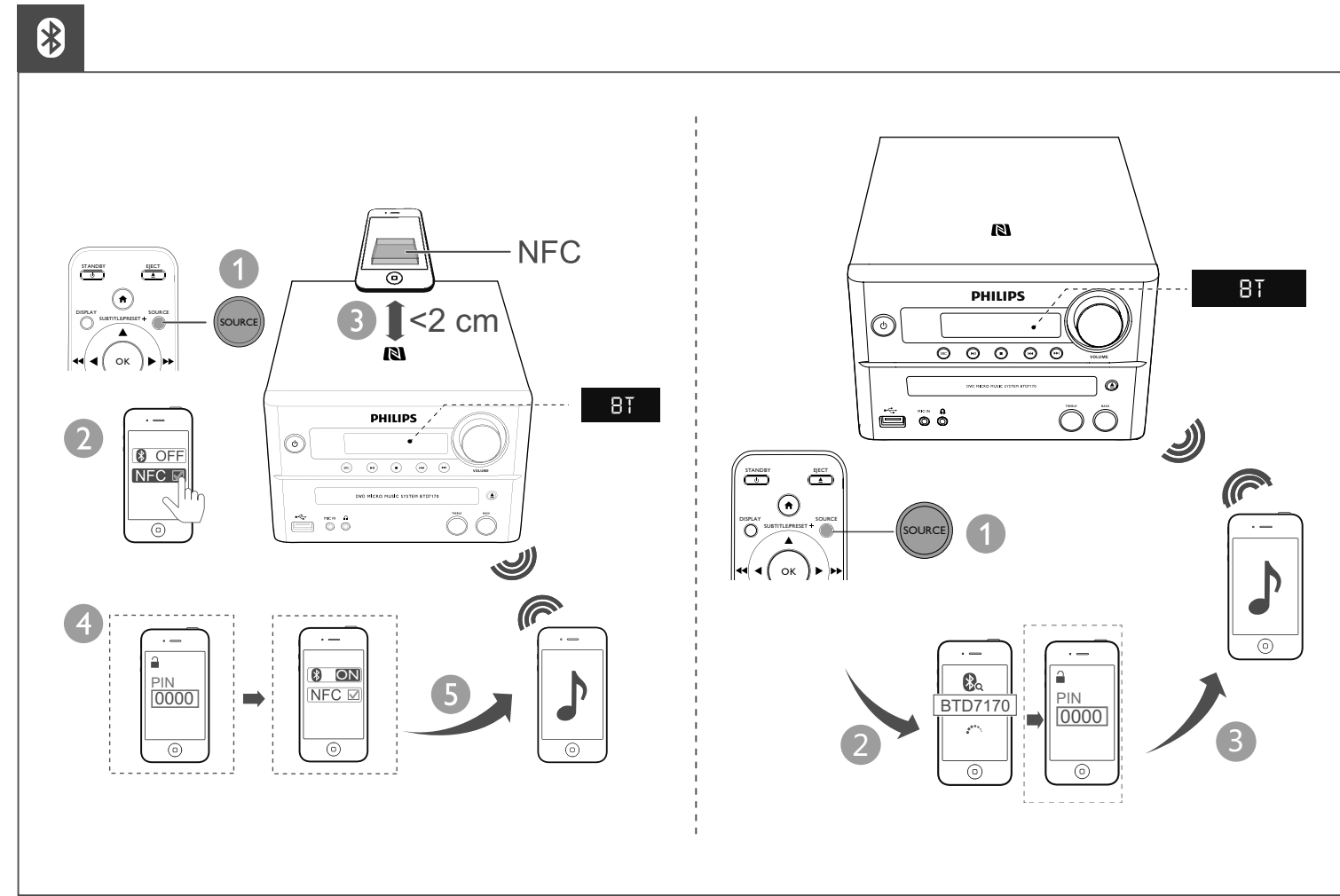
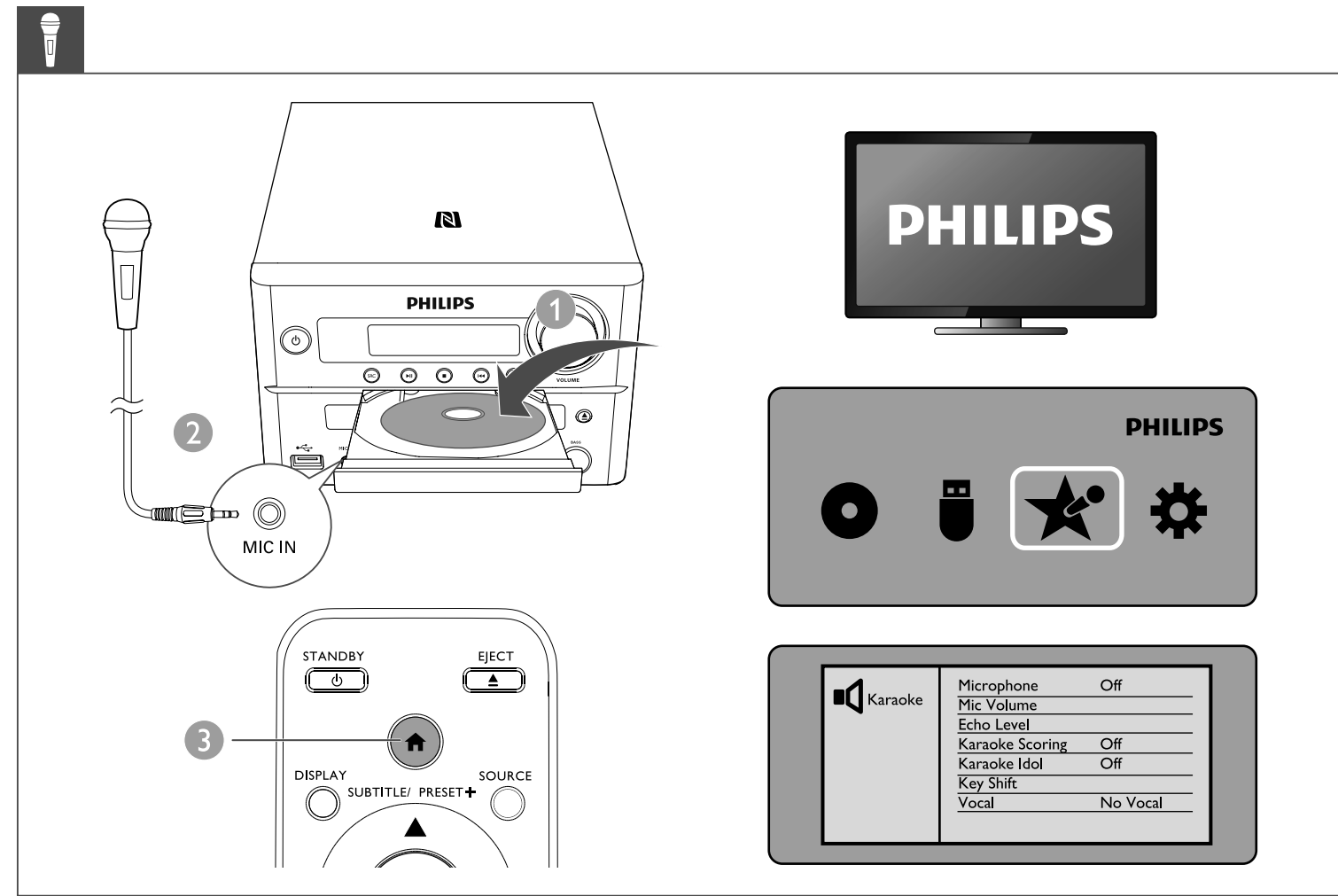
**1** Connect the receiver to the TV using the provided cables.  
**2** Connect the receiver to the TV using the provided cables.  
**3** Connect the receiver to the TV using the provided cables.

**1** Connect the receiver to the TV using the provided cables.  
**2** Connect the receiver to the TV using the provided cables.  
**3** Connect the receiver to the TV using the provided cables.

**1** Connect the receiver to the TV using the provided cables.  
**2** Connect the receiver to the TV using the provided cables.  
**3** Connect the receiver to the TV using the provided cables.

**1** Connect the receiver to the TV using the provided cables.  
**2** Connect the receiver to the TV using the provided cables.  
**3** Connect the receiver to the TV using the provided cables.

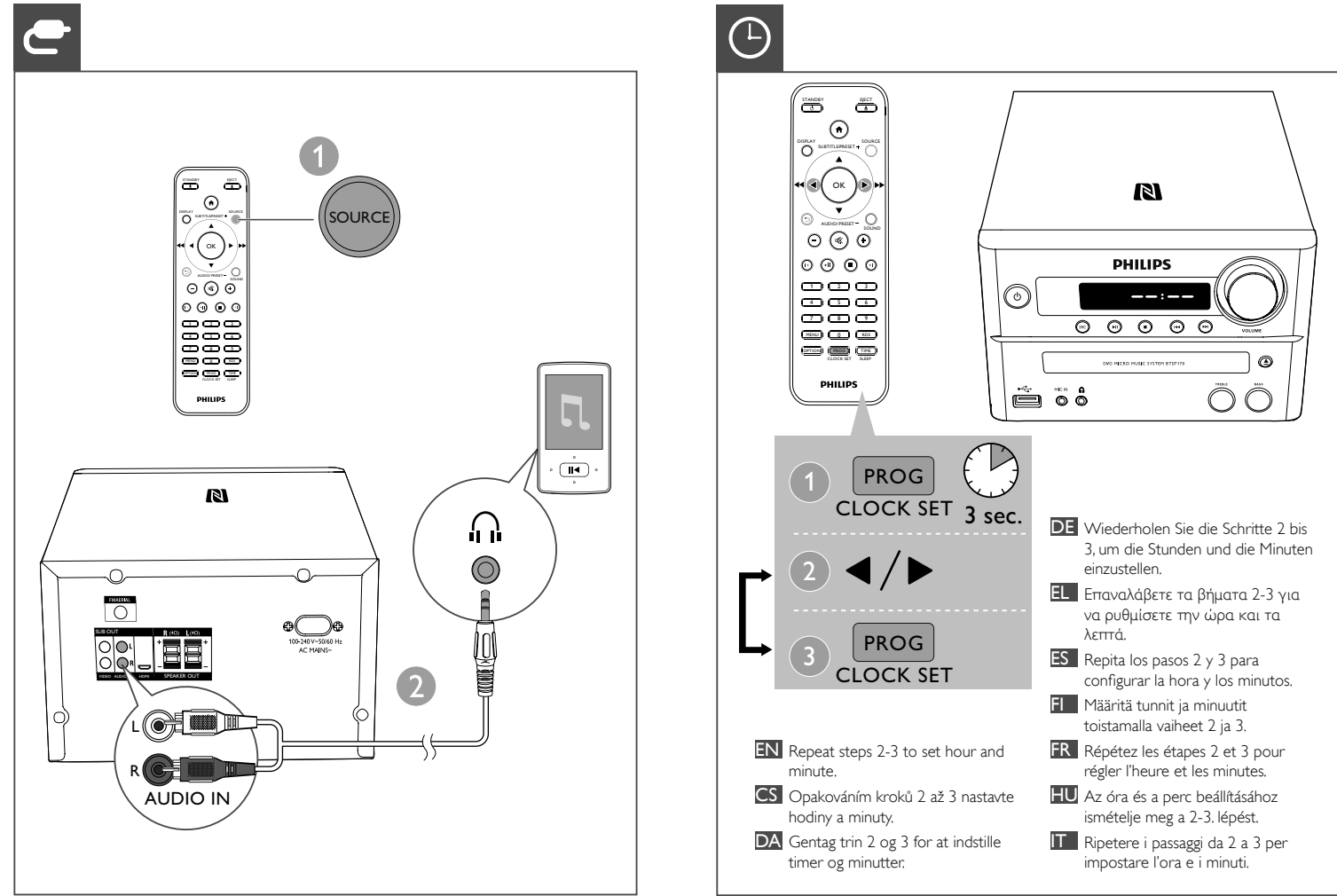
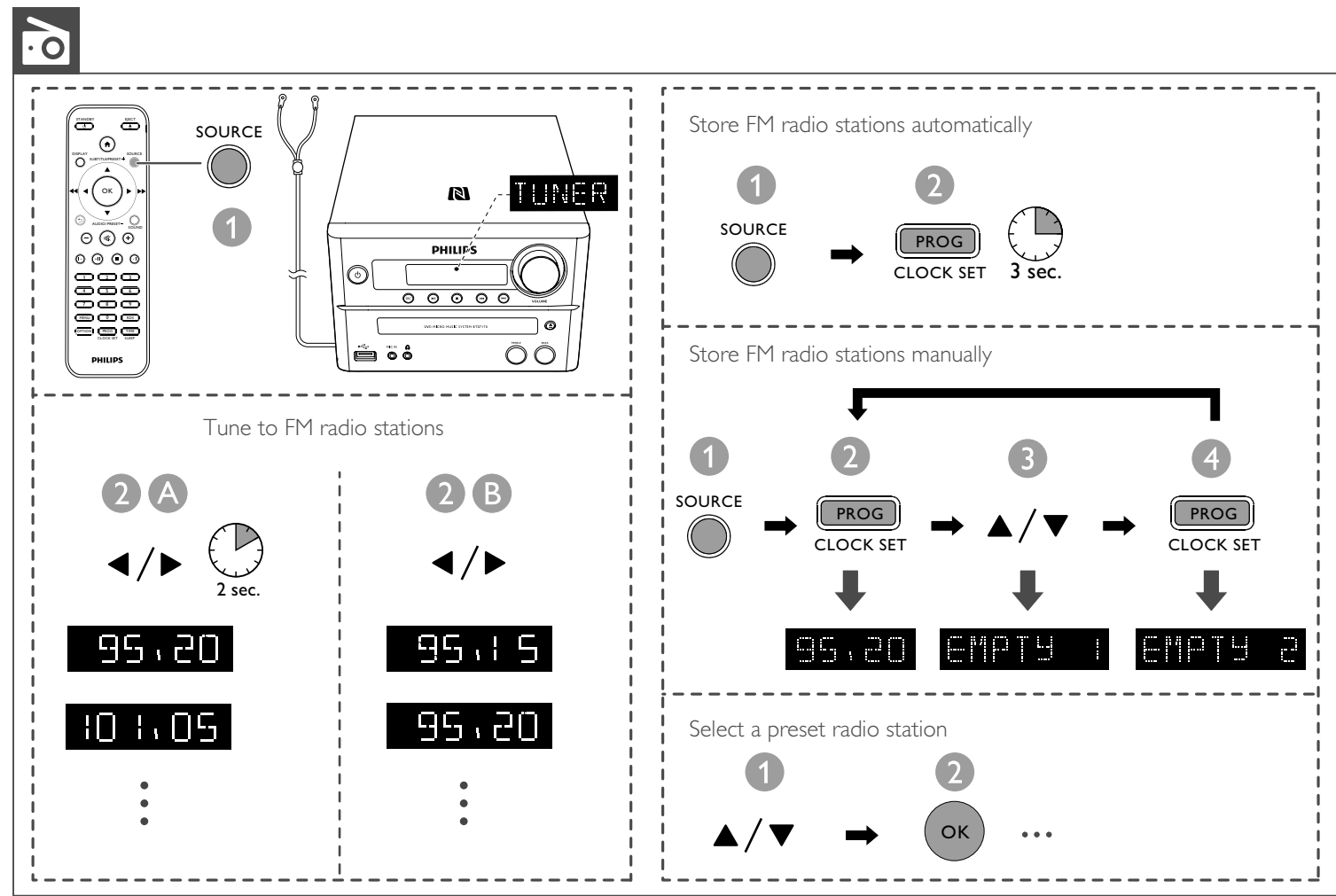
**1** Connect the receiver to the TV using the provided cables.  
**2** Connect the receiver to the TV using the provided cables.  
**3** Connect the receiver to the TV using the provided cables.



Specifications table with columns for English (EN), Greek (GR), and Chinese (CN). It lists technical details such as Maximum Output Power (150W), Speaker Impedance (4 ohm), and Dimensions (230 x 145 x 240 mm).

Technical specifications table in French (FR) and Chinese (CN). It includes details like Puissance de sortie maximale (150 W), Impédance (4 ohms), and Dimensions (230 x 145 x 240 mm).

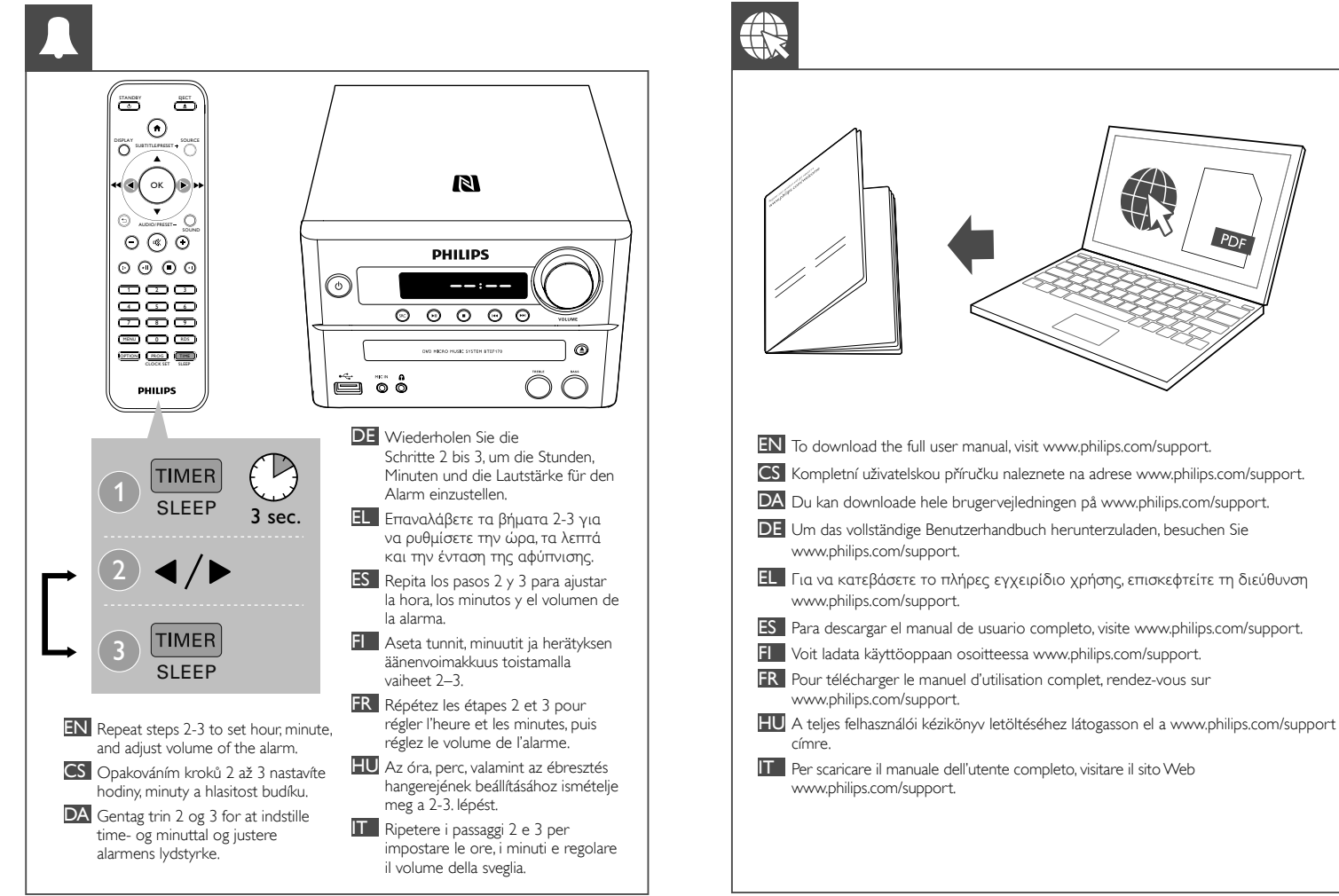
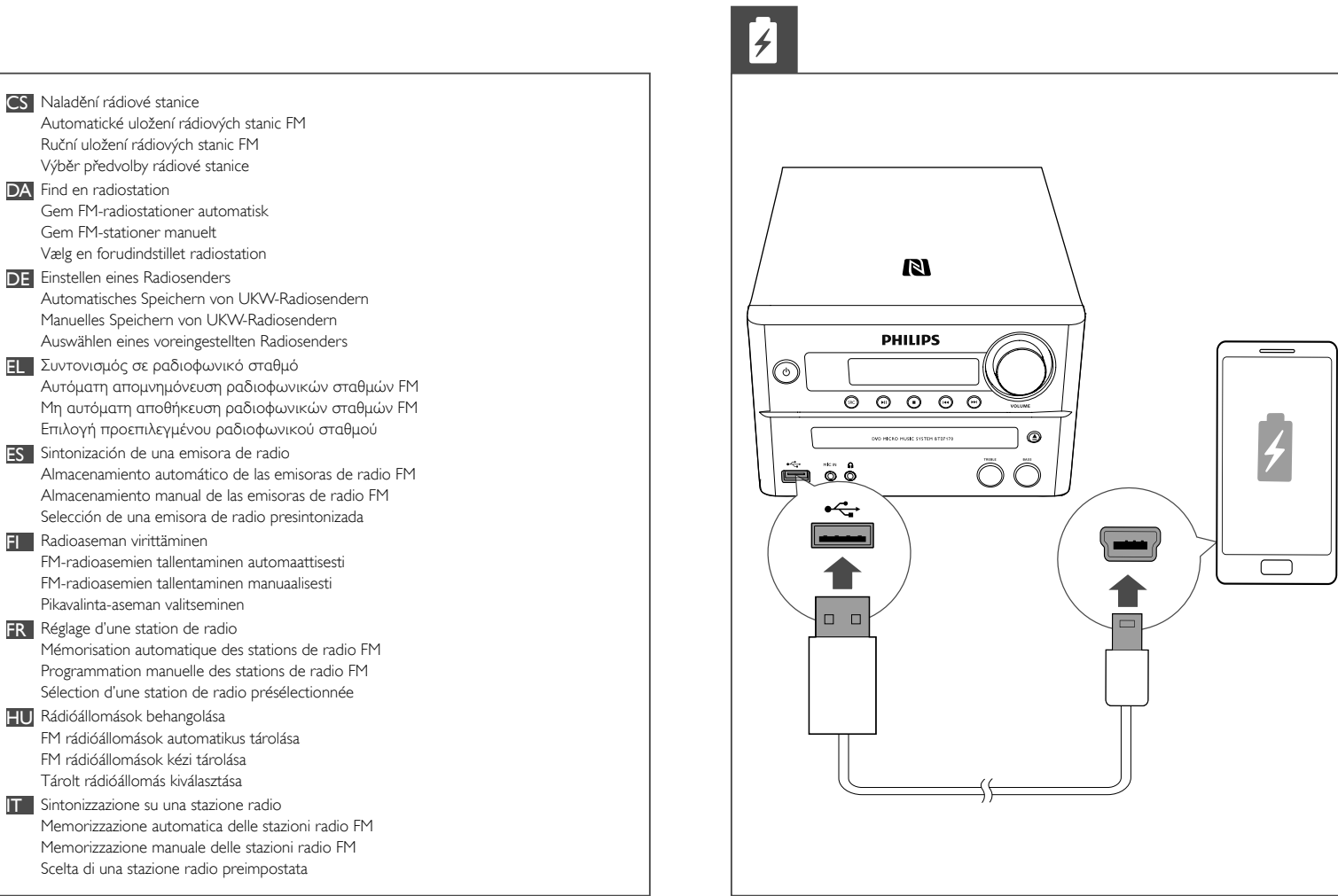
Support and compatibility table in Greek (GR) and Chinese (CN). It lists supported formats for MP3-CDs, USB drives, and MP3-CDs, including file types like ISO 9660, MP3, and AAC.



Specifications table with columns for English (EN), Greek (GR), and Chinese (CN). It lists technical details such as Maximum Output Power (150W), Speaker Impedance (4 ohm), and Dimensions (230 x 145 x 240 mm).

Technical specifications table in French (FR) and Chinese (CN). It includes details like Puissance de sortie maximale (150 W), Impédance (4 ohms), and Dimensions (230 x 145 x 240 mm).

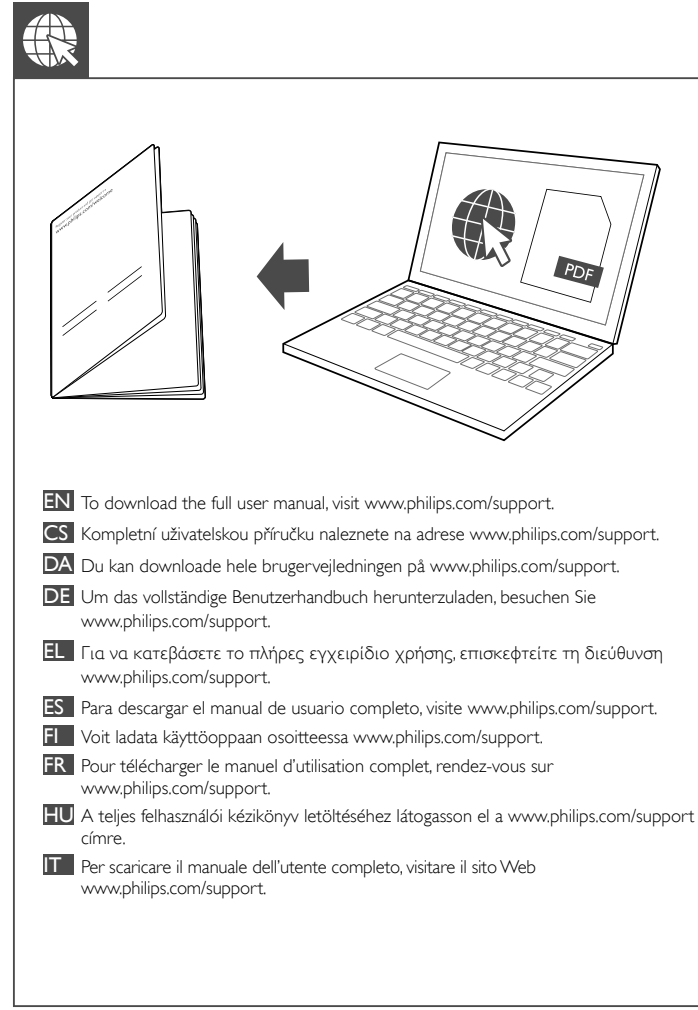
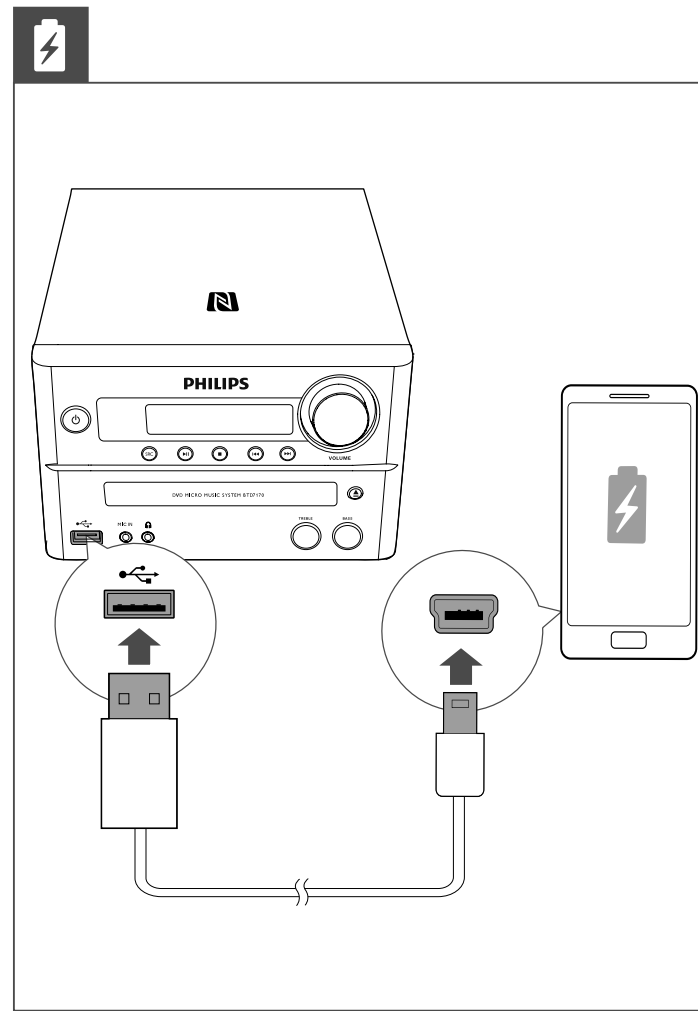
Support and compatibility table in Greek (GR) and Chinese (CN). It lists supported formats for MP3-CDs, USB drives, and MP3-CDs, including file types like ISO 9660, MP3, and AAC.



Specifications table with columns for English (EN), Greek (GR), and Chinese (CN). It lists technical details such as Maximum Output Power (150W), Speaker Impedance (4 ohm), and Dimensions (230 x 145 x 240 mm).

Technical specifications table in French (FR) and Chinese (CN). It includes details like Puissance de sortie maximale (150 W), Impédance (4 ohms), and Dimensions (230 x 145 x 240 mm).

Support and compatibility table in Greek (GR) and Chinese (CN). It lists supported formats for MP3-CDs, USB drives, and MP3-CDs, including file types like ISO 9660, MP3, and AAC.



Specifications table with columns for English (EN), Greek (GR), and Chinese (CN). It lists technical details such as Maximum Output Power (150W), Speaker Impedance (4 ohm), and Dimensions (230 x 145 x 240 mm).

Technical specifications table in French (FR) and Chinese (CN). It includes details like Puissance de sortie maximale (150 W), Impédance (4 ohms), and Dimensions (230 x 145 x 240 mm).

Support and compatibility table in Greek (GR) and Chinese (CN). It lists supported formats for MP3-CDs, USB drives, and MP3-CDs, including file types like ISO 9660, MP3, and AAC.