

34312/**/16

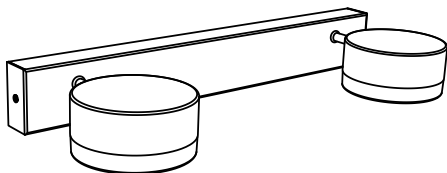


Gebruiksaanwijzing
Notice d'emploi
Benutzerhandbuch
User manual
Manual de usuario



PHILIPS

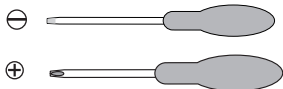
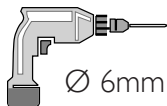
Incl.



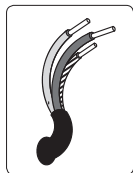
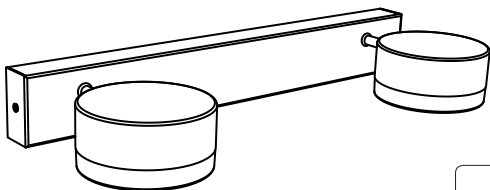
2x



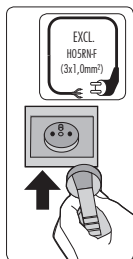
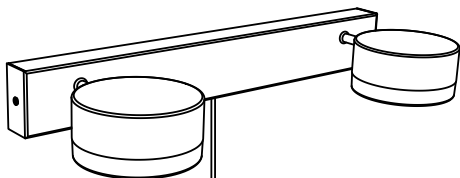
Excl.



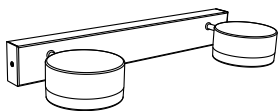
Type 1 p.4



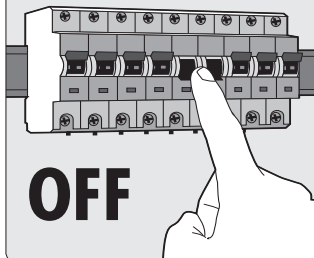
Type 2 p.6



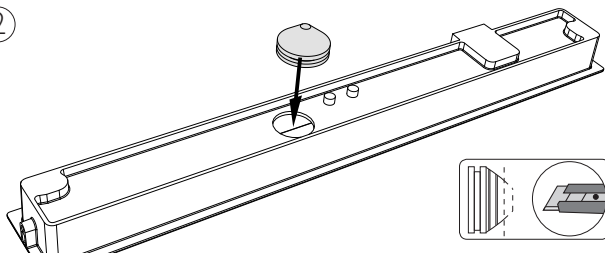
Type 1



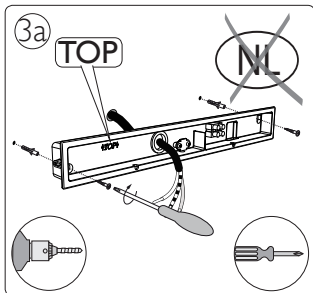
1



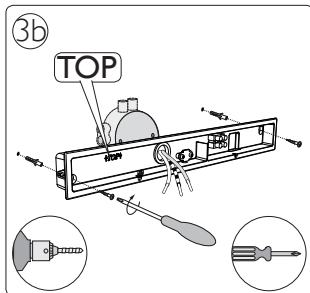
2

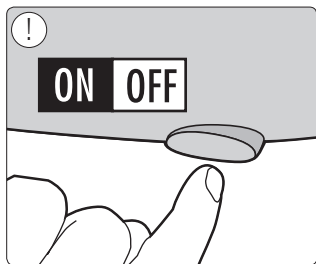
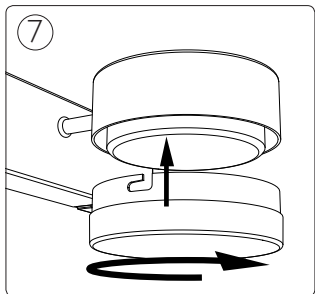
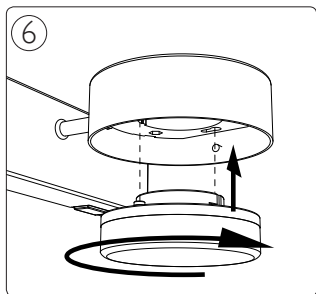
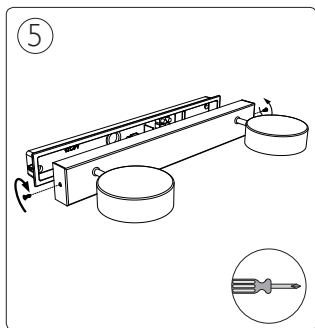
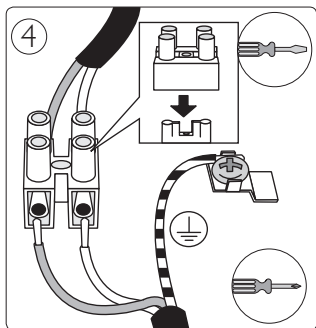


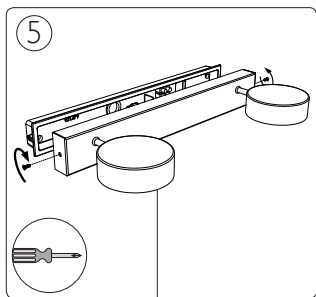
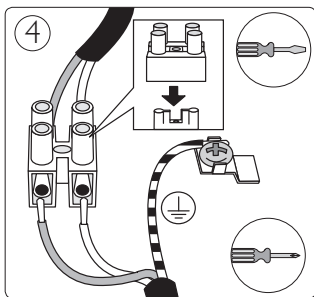
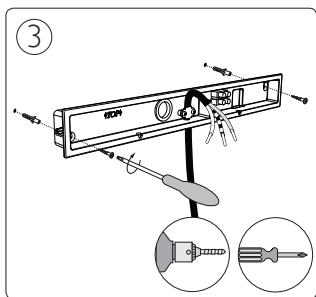
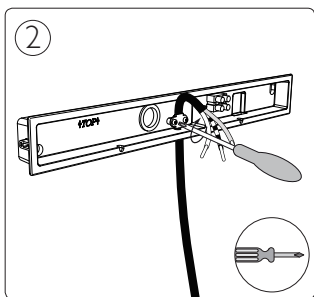
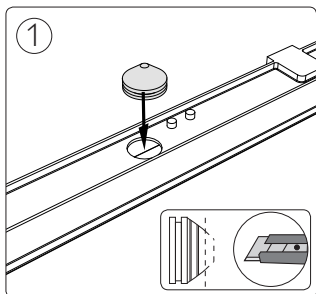
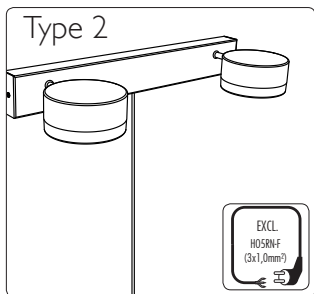
3a

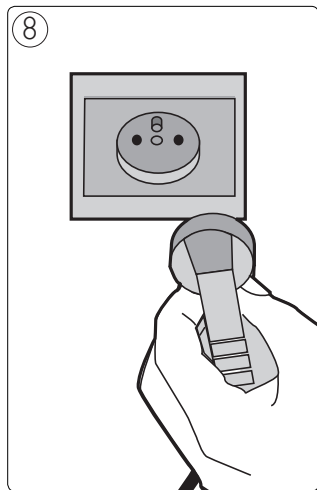
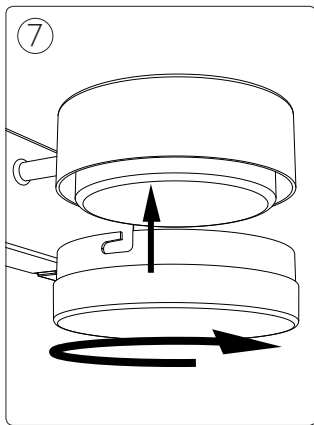
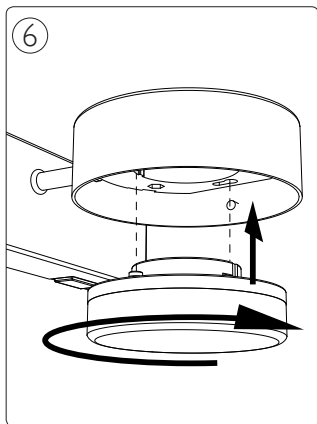


3b











Philips Lighting Contact Centre
Int. Business Reply Service
I.B.R.S. / C.C.R.I. Numéro 10461
5600 VB Eindhoven
Pays-Bas / The Netherlands

www.philips.com/homelighting
☎ +800 7445 4775

4404.018.36121
Last update: 17/12/12