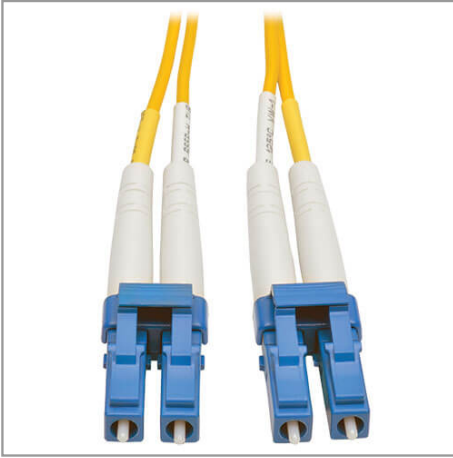


# Duplex Singlemode 9/125 Fiber Patch Cable (LC/LC), 20 m (65 ft.)

MODEL NUMBER: **N370-20M**



Premium singlemode fiber optic cabling transmits fast, clear data signals through your LAN with data transfer speeds up to 10 Gbps.

## Features

### Fast, Clear Data Transmission Through Your LAN

- Data transfer speeds up to 10 Gbps
- Ideal for network equipment that requires singlemode fiber optic patch cables
- Attenuation loss meets or exceeds latest industry standards

### Superior Construction for Error-Free Signal Transfer

- 9/125 duplex (zipcord) fiber made from glass
- Sturdy LC male connectors meet stringent insertion loss standards
- Beveled edge on glass ends for easy plug insertion
- Yellow-colored for identification as singlemode

## Specifications

OVERVIEW	
UPC Code	037332134240
Technology	Singlemode
Optical Mode	OS2
PHYSICAL	
Cable Jacket Color	Yellow
Connector Color	Blue; White
Cable Jacket Material	LSZH

## Highlights

- Attenuation loss meets or exceeds latest industry standards
- 9/125 duplex (zipcord) fiber made from glass
- LC male connectors meet insertion loss standards
- FDDI- and OFNR-rated
- Beveled edge on glass ends for easy plug insertion

## System Requirements

- Fiber optic hardware or NIC card requiring singlemode duplex cable with LC/LC connectors

## Package Includes

- N370-20M Duplex Singlemode 9/125 Fiber Patch Cable, 20 m



Powering Business Worldwide



Cable Jacket Rating	OFNR
Clad Diameter (microns)	125
Core Diameter (microns)	9
Number of Fibers	2
Cable Length (ft.)	65.6
Cable Length (m)	20.00
Cable Length (in.)	787.4
Minimum Bend Radius	20 mm (Dynamic); 10 mm (Static)
Shipping Dimensions (hwd / in.)	9.00 x 7.00 x 0.50
Shipping Dimensions (hwd / cm)	22.86 x 17.78 x 1.27
Shipping Weight (lbs.)	0.35
Shipping Weight (kg)	0.16
Fiber Cable Length	20M (65.6 ft)
<b>ENVIRONMENTAL</b>	
Operating Temperature Range	-4° to 140°F (-20° to 60°C)
Storage Temperature Range	-4° to 140°F (-20° to 60°C)
Operating Humidity Range	5% to 85% RH, Non-Condensing
Storage Humidity Range	35% to 65% RH, Non-Condensing
<b>COMMUNICATIONS</b>	
Network Compatibility	1 Gbps (Gigabit); 10 Gbps; 25 Gbps; 40 Gbps; 100 Gbps; 400 Gbps
Attenuation @ 1310NM	0.36 dB/km
Attenuation @ 1550NM	0.22 dB/km
Insertion Loss	0.30 dB
<b>CONNECTIONS</b>	
Side A - Connector 1	LC DUPLEX (MALE)
Side B - Connector 1	LC DUPLEX (MALE)
Endface Polish	UPC
<b>FEATURES &amp; SPECIFICATIONS</b>	
Push/Pull Tabs	No
Breakout	No
Trunk	No
<b>STANDARDS &amp; COMPLIANCE</b>	
Product Compliance	RoHS; REACH



Powering Business Worldwide



WARRANTY & SUPPORT	
Product Warranty Period (Worldwide)	Lifetime limited warranty

1000 Eaton Boulevard  
Cleveland, OH 44122  
United States  
<https://tripplite.eaton.com>

© 2024 Eaton. All Rights Reserved.  
Eaton is a registered trademark. All other trademarks  
are the property of their respective owners.