

# ASUS All-in-One PC

## *User Manual*



## ET2301 Series

**E8285**  
**June 2013**

### **COPYRIGHT INFORMATION**

No part of this manual, including the products and software described in it, may be reproduced, transmitted, transcribed, stored in a retrieval system, or translated into any language in any form or by any means, except documentation kept by the purchaser for backup purposes, without the express written permission of ASUSTeK COMPUTER INC. ("ASUS").

ASUS PROVIDES THIS MANUAL "AS IS" WITHOUT WARRANTY OF ANY KIND, EITHER EXPRESS OR IMPLIED, INCLUDING BUT NOT LIMITED TO THE IMPLIED WARRANTIES OR CONDITIONS OF MERCHANTABILITY OR FITNESS FOR A PARTICULAR PURPOSE. IN NO EVENT SHALL ASUS, ITS DIRECTORS, OFFICERS, EMPLOYEES OR AGENTS BE LIABLE FOR ANY INDIRECT, SPECIAL, INCIDENTAL, OR CONSEQUENTIAL DAMAGES (INCLUDING DAMAGES FOR LOSS OF PROFITS, LOSS OF BUSINESS, LOSS OF USE OR DATA, INTERRUPTION OF BUSINESS AND THE LIKE), EVEN IF ASUS HAS BEEN ADVISED OF THE POSSIBILITY OF SUCH DAMAGES ARISING FROM ANY DEFECT OR ERROR IN THIS MANUAL OR PRODUCT.

Products and corporate names appearing in this manual may or may not be registered trademarks or copyrights of their respective companies, and are used only for identification or explanation and to the owners' benefit, without intent to infringe.

SPECIFICATIONS AND INFORMATION CONTAINED IN THIS MANUAL ARE FURNISHED FOR INFORMATIONAL USE ONLY, AND ARE SUBJECT TO CHANGE AT ANY TIME WITHOUT NOTICE, AND SHOULD NOT BE CONSTRUED AS A COMMITMENT BY ASUS. ASUS ASSUMES NO RESPONSIBILITY OR LIABILITY FOR ANY ERRORS OR INACCURACIES THAT MAY APPEAR IN THIS MANUAL, INCLUDING THE PRODUCTS AND SOFTWARE DESCRIBED IN IT.

Copyright © 2013 ASUSTeK COMPUTER INC. All Rights Reserved.

### **LIMITATION OF LIABILITY**

Circumstances may arise where because of a default on ASUS' part or other liability, you are entitled to recover damages from ASUS. In each such instance, regardless of the basis on which you are entitled to claim damages from ASUS, ASUS is liable for no more than damages for bodily injury (including death) and damage to real property and tangible personal property; or any other actual and direct damages resulted from omission or failure of performing legal duties under this Warranty Statement, up to the listed contract price of each product.

ASUS will only be responsible for or indemnify you for loss, damages or claims based in contract, tort or infringement under this Warranty Statement.

This limit also applies to ASUS' suppliers and its reseller. It is the maximum for which ASUS, its suppliers, and your reseller are collectively responsible.

UNDER NO CIRCUMSTANCES IS ASUS LIABLE FOR ANY OF THE FOLLOWING: (1) THIRD-PARTY CLAIMS AGAINST YOU FOR DAMAGES; (2) LOSS OF, OR DAMAGE TO, YOUR RECORDS OR DATA; OR (3) SPECIAL, INCIDENTAL, OR INDIRECT DAMAGES OR FOR ANY ECONOMIC CONSEQUENTIAL DAMAGES (INCLUDING LOST PROFITS OR SAVINGS), EVEN IF ASUS, ITS SUPPLIERS OR YOUR RESELLER IS INFORMED OF THEIR POSSIBILITY.

### **SERVICE AND SUPPORT**

Visit our multi-language web site at <http://support.asus.com>

## Table of Contents

About this manual .....	5
Safety information .....	7
Package contents .....	9
<b>Chapter 1: Hardware Setup</b>	
Getting to know your All-in-One PC .....	11
Front view .....	11
Rear view .....	13
Left side view .....	15
Right side view .....	16
<b>Chapter 2: Using your All-in-One PC</b>	
Positioning your All-in-one PC .....	21
Connecting a wireless keyboard and mouse .....	23
Powering on your All-in-One PC .....	24
Using the On Screen Display (OSD) Menu .....	25
Configuring the audio output via an HDMI device .....	27
Gestures .....	29
Using Ai Crosslink .....	31
Installing Ai Crosslink .....	31
Troubleshooting the Ai Crosslink Installation .....	32
Setting up Ai Crosslink .....	33
Using Ai Crosslink Features .....	34
Using Device Share .....	35
<b>Chapter 3: Working with Windows® 8</b>	
Starting for the first time (For Windows® 8 and Windows® 8 Professional) .....	37
Windows® 8 lock screen .....	37
Windows® UI .....	38
Start screen .....	38
Windows® apps .....	39
Hotspots .....	39

Table of Contents

Working with Windows® apps..... 42

    Launching apps.....42

    Customizing apps.....42

    Accessing All Apps .....43

    Charm bar.....44

    Snap feature.....46

Other keyboard shortcuts..... 47

Turning your All-in-One PC off..... 48

**Chapter 4: Connecting to the Internet**

Setting up a Wi-Fi connection in Windows® 8..... 49

Setting up a Wired connection in Windows® 8 ..... 50

    Configuring a dynamic IP/PPPoE network connection ..... 50

    Configuring a static IP network connection ..... 53

Setting up a Bluetooth Wireless Connection ..... 54

**Chapter 5: Recovering your system**

Entering the BIOS Setup ..... 57

Resetting your All-in-One PC in Windows® 8..... 58

Recovering from a system image file in Windows® 8..... 59

    Creating a USB recovery drive..... 59

Removing everything and reinstalling Windows® 8..... 60

**Appendices**

Notices ..... 61

## About this manual

This manual provides information about the hardware and software features of your All-in-One PC.

### Chapter 1: Hardware Setup

This chapter details the hardware components of your All-in-One PC.

### Chapter 2: Using your All-in-One PC

This chapter provides you with information on using your All-in-One PC.

### Chapter 3: Working with Windows® 8

This chapter provides an overview of using Windows® 8 in your All-in-One PC.

### Chapter 4: Connecting to the Internet

This chapter provides information on connecting your All-in-One PC to a wired or Wi-Fi network.

### Chapter 5: Recovering your system

This chapter provides recovery options for your All-in-One PC.

### Appendices

This section includes notices and safety statements for your All-in-One PC.

## Conventions used in this manual

To highlight key information in this manual, some text are presented as follows:

---

**IMPORTANT!** This message contains vital information that must be followed to complete a task.

---

**NOTE:** This message contains additional information and tips that can help complete tasks.

---

**WARNING!** This message contains important information that must be followed to keep you safe while performing tasks and prevent damage to your All-in-One PC's data and components.

---

## Icons

The icons below indicate the devices you can use for completing a series of tasks or procedures on your All-in-One PC.



Use the touchscreen.



Use the keyboard.

## Typography

**Bold** This indicates a menu or an item that must be selected.

*Italic* This indicates sections that you can refer to in this manual.

All illustrations and screenshots in this manual are for reference only. Actual product specifications and software screen images may vary with location. Visit the ASUS website at [www.asus.com](http://www.asus.com) for the latest information.

## Safety information

Your All-in-One PC ET2301 is designed and tested to meet the latest standards of safety for information technology equipment. However, to ensure your safety, it is important that you read the following safety instructions.

### Setting up your system

- Read and follow all instructions in the documentation before you operate your system.
- Do not use this product near water or a heat source such as a radiator.
- Set up the system on a stable surface.
- Openings on the chassis are for ventilation. Do not block or cover these openings. Ensure that you leave plenty of space around the system for ventilation. Never insert objects of any kind into the ventilation openings.
- Use this product in environments with ambient temperatures between 0°C and 40°C.
- If you use an extension cord, ensure that the total ampere rating of the devices plugged into the extension cord does not exceed its ampere rating.

### Care during use

- Do not walk on the power cord or allow anything to rest on it.
- Do not spill water or any other liquids on your system.
- When the system is turned off, a small amount of electrical current still remains in the product. Always unplug all power, modem, and network cables from the power outlets before cleaning the system.
- The touch screen requires periodic cleaning to perform at optimal touch sensitivity. Keep the screen clean from foreign objects or excessive dust accumulation. To clean the screen:
  - Turn off the system and disconnect the power cord from the wall.
  - Spray a small amount of household glass cleaner on the supplied cleaning cloth and gently wipe the surface of the screen.
  - Do not spray the cleaner directly on the screen.
  - Do not use an abrasive cleaner or a coarse cloth when cleaning the screen.
- If you encounter the following technical problems with the product, unplug the power cord and contact a qualified service technician or your retailer.
  - The power cord or plug is damaged.
  - Liquid has been spilled into the system.
  - The system does not function properly even if you follow the operating instructions.
  - The system was dropped or the chassis is damaged.
  - The system performance changes.

## Sound Pressure Warning

Excessive sound pressure from earphones or headphones can cause hearing loss or permanent damage to hearing. Increasing the volume and equalizer beyond default levels increases the output voltage and sound pressure produced by the earphones or headphones.

## TV Tuner (on selected models)

Note to CATV System Installer—This reminder is provided to call the CATV systems installer's attention to Section 820-93 of the National Electric Code, which provides guidelines for proper grounding and, in particular, specify that the Coaxial cable shield be connected to the grounding system of the building as close to the point of cable entry as practical.

## Adapter

### 1. Adapter specification

Input voltage: 100–240Vac

Input frequency: 50–60Hz

Rating output current: 180W (19.5V, 9.23A)

Rating output voltage: 19.5Vdc




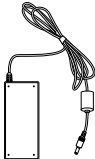
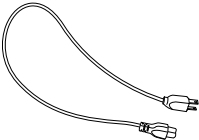
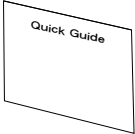
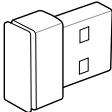



### 2. It is recommended that the power socket is in close proximity to the All-in-One PC.

## DC Fan Warning

Please note that the DC fan is a moving part and can cause harm when used improperly. Keep away from the fan when using the product.



Package contents

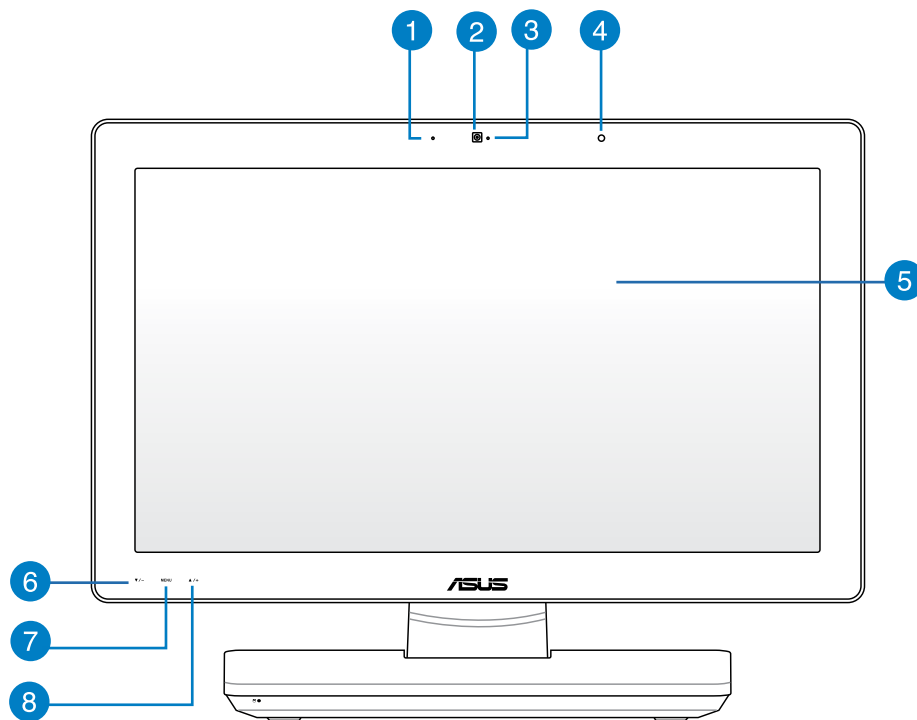
		
All-in-one PC ET2301	Wireless Keyboard	Wireless Mouse
		
AC adapter	Power cord	Quick Start Guide
		
Wireless Keyboard and Mouse USB receiver dongle	Subwoofer (optional)	Remote Control (optional)
	<div><b>NOTE:</b> The keyboard, mouse, AC adapter, remote control, ASUS Link cable, subwoofer, and KBM USB receiver dongle illustrations are for reference only. Actual product specifications may vary according to location.</div>	
ASUS Link Cable		

Lined area for writing.

# Chapter 1: Hardware Setup

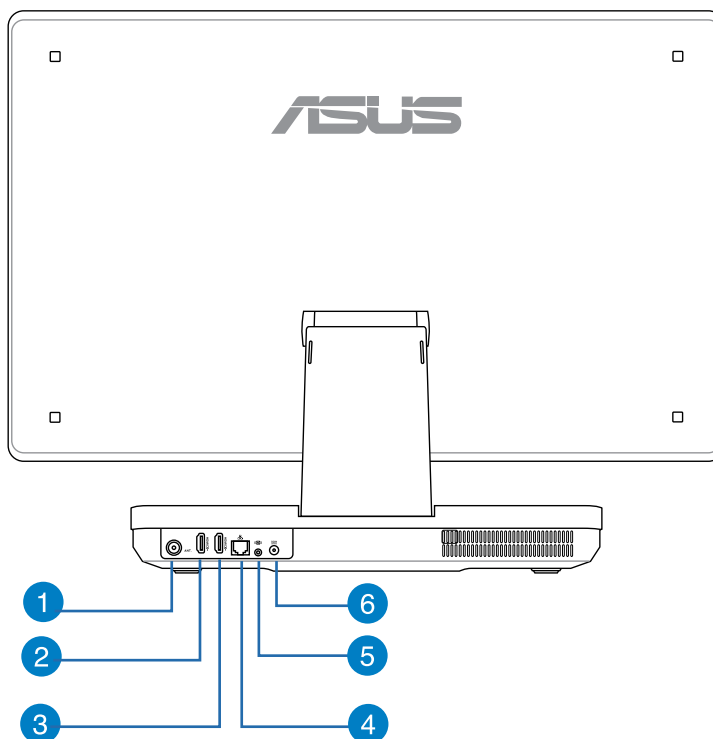
## Getting to know your All-in-One PC

### Front view



- 1 Digital microphone (Built-in)**  
The built-in digital microphone can be used for video conferencing, voice narrations, audio recordings and multimedia applications.
- 2 Webcam**  
The built-in webcam with the built-in digital microphone allows you to start video chats online.
- 3 Webcam LED**  
Indicates that the built-in webcam is enabled.
- 4 Remote Control Receiver**  
The remote control receiver receives the infrared signal from the remote control.
- 5 Touch-enabled LCD display**  
The 23" LCD display features full HD 1920 x 1080 resolution with capacitive touch input.
- 6 Menu Down button**  
Press this button to move down the options when the Menu is displayed.
- 7 Menu button**  
Press this button display the menu. Press this button as you navigate the menu to enter/select the highlighted option.
- 8 Menu Up button**  
Press this button to move up the options when the Menu is displayed.

## Rear view



### 1 Antenna socket

Connect standard indoor or outdoor male antenna connectors to receive over-the-air broadcast TV signals.

**NOTE:** The antenna socket is available for models with the optional TV Tuner card.

### 2 HDMI Input Port

When using the HDMI-in mode, use the HDMI Input port for receiving video/audio signals from another source such as a set-top-box or DVD player.

**3 HDMI Output Port**

Connect this port with devices equipped with an HDMI input port, such as an LCD monitor or projector.

**4 LAN port**

This eight-pin RJ-45 LAN port supports a standard Ethernet cable for connection to a local network.

**5 Subwoofer jack**

This jack is used to connect to an ASUS All-in-One PC subwoofer for producing powerful bass (low frequency sounds) when playing multimedia.

**6 Power input**

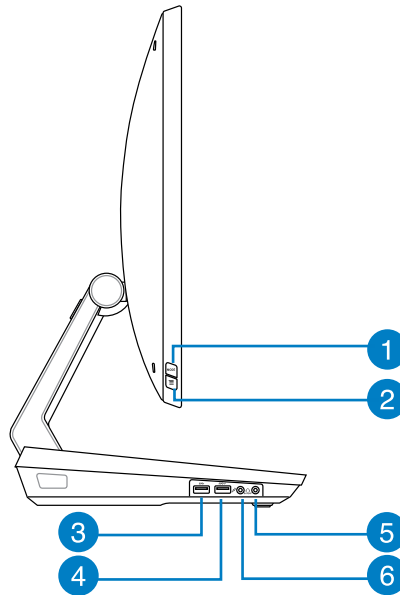
The supplied power adapter converts AC power to DC power for use with this jack. To prevent damage to the PC, always use the supplied power adapter.

---

**WARNING!** The power adapter may get warm or hot when in use. Do not cover the adapter and keep it away from your body.

---

## Left side view



### 1 Mode button

Press this button to switch the display signal source from PC to HDMI Input.

### 2 Menu lock

Press this button to activate or deactivate the MENU button on the front panel.

### 3 USB 3.0 port

This USB (Universal Serial Bus) port provides a transfer rate of up to 5Gbit/s and is backward compatible with USB2.0.

### 4 USB 3.0 port

This USB (Universal Serial Bus) port provides a transfer rate of up to 5Gbit/s and is backward compatible with USB2.0.

This port supports the AI Charger II feature, allowing you to quickly charge compatible devices. To enable the AI Charger II on your All-in-One PC, go to **Desktop>AI Suite II>AI Charger II** then select **Enable**.

### 5 Headphone output and S/PDIF output combo jack

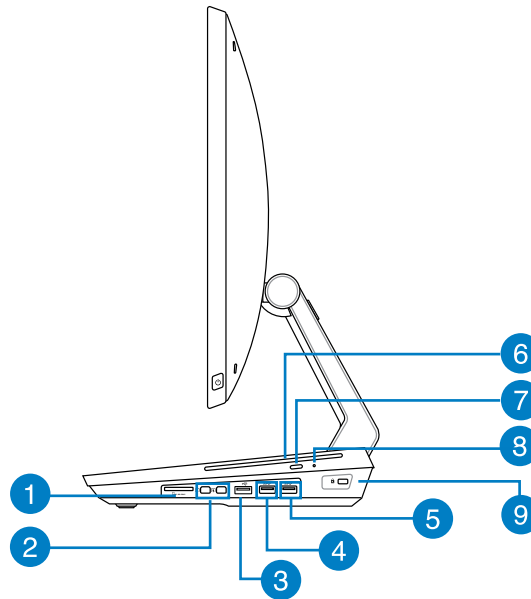
This combo jack supports speakers, headphones, and S/PDIF audio devices.

### 6 Microphone jack

The microphone jack is designed to connect to a microphone used for video conferencing, voice narrations, or simple audio recordings.

## Right side view

## ET2301INTH

**1 6-in-1 Memory card reader**

This All-in-One PC has a single built-in memory card reader slot that supports MS, MS-Pro, MMC, SD, SDXC, and SDHC formats.

**IMPORTANT!** Memory cards are keyed so that it can only be inserted into the slot in one direction. Insert the card with the label facedown. Do not force a card into the slot to avoid damaging the card.

**2 ThunderBolt Ports**

Use a Thunderbolt adapter to connect your All-in-one PC to a DisplayPort, VGA, DVI, or HDMI external display\* and experience high-resolution display features via Intel® Thunderbolt™ technology.

**IMPORTANT!** \* The Thunderbolt ports support external displays that are Thunderbolt-certified for Windows®. For the latest Thunderbolt-certified devices for Windows®, visit <https://thunderbolttechnology.net/products>

**NOTE:** To ensure that the Thunderbolt-certified device for Windows functions properly, visit the device vendor's website.



### 3 USB 2.0 port

This USB (Universal Serial Bus) port is compatible with USB 2.0 or USB 1.1 devices such as keyboards, pointing devices, flash disk drives, external HDDs, cameras and printers.

### 4 USB 3.0 port

This USB (Universal Serial Bus) port provides a transfer rate of up to 5Gbit/s and is backward compatible with USB2.0.

This USB 3.0 port supports Device Share. Use this port for connecting the ASUS Link cable to another device such as a notebook PC or Android tablet.

---

**NOTE:** For instructions on setting up Device Share, please refer to *Using Device Share*.

---

### 5 USB 3.0 port

This USB (Universal Serial Bus) port provides a transfer rate of up to 5Gbit/s and is backward compatible with USB2.0.

This USB 3.0 port supports Ai Crosslink. Use this port for connecting the ASUS Link cable to another Windows® 8 PC.

---

**NOTE:** For instructions on setting up Ai Crosslink, please refer to *Using Ai Crosslink*.

---

### 6 Optical Drive

The built-in optical drive may support compact discs (CD), digital video discs (DVD), and/or Blu-ray discs (BD), and recordable (R) or re-writable (RW) media. Consult product specifications for details on included optical drive.

### 7 Optical disc drive eject button

Press this button to eject the optical drive tray.

### 8 Optical disc drive manual eject hole

The manual eject hole is used to eject the drive tray in case the eject button does not work.

---

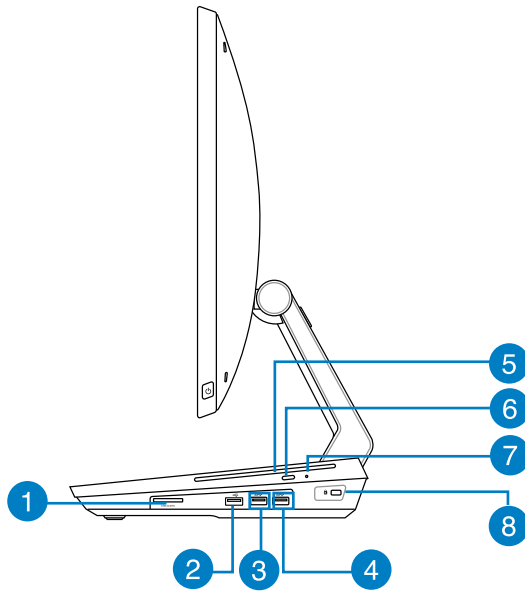
**WARNING!** Use the manual eject hole only when the eject button does not work.

---

### 9 Kensington® lock hole

The Kensington® lock hole allows you to secure your PC using Kensington® compatible PC security products.

## ET2301IUTH

**1 6-in-1 Memory card reader**

This All-in-One PC has a single built-in memory card reader slot that supports MS, MS-Pro, MMC, SD, SDXC, and SDHC formats.

**IMPORTANT!** Memory cards are keyed so that it can only be inserted into the slot in one direction. Insert the card with the label facedown. Do not force a card into the slot to avoid damaging the card.

**2 USB 2.0 port**

This USB (Universal Serial Bus) port is compatible with USB 2.0 or USB 1.1 devices such as keyboards, pointing devices, flash disk drives, external HDDs, cameras and printers.

**3 USB 3.0 port**

This USB (Universal Serial Bus) port provides a transfer rate of up to 5Gbit/s and is backward compatible with USB2.0.

This USB 3.0 port supports Device Share. Use this port for connecting the ASUS Link cable to another device such as a notebook PC or Android tablet.

**NOTE:** For instructions on setting up Device Share, please refer to *Using Device Share*.

#### 4 USB 3.0 port

This USB (Universal Serial Bus) port provides a transfer rate of up to 5Gbit/s and is backward compatible with USB2.0.

This USB 3.0 port supports Ai Crosslink. Use this port for connecting the ASUS Link cable to another Windows 8 PC.

---

**NOTE:** For instructions on setting up Ai Crosslink, please refer to *Using Ai Crosslink*.

---

#### 5 Optical Drive

The built-in optical drive may support compact discs (CD), digital video discs (DVD), and/or Blu-ray discs (BD), and recordable (R) or re-writable (RW) media. Consult product specifications for details on included optical drive.

#### 6 Optical disc drive eject button

Press this button to eject the optical drive tray.

#### 7 Optical disc drive manual eject hole

The manual eject hole is used to eject the drive tray in case the eject button does not work.

---

**WARNING!** Use the manual eject hole only when the eject button does not work.

---

#### 8 Kensington® lock hole

The Kensington® lock hole allows you to secure your PC using Kensington® compatible PC security products.

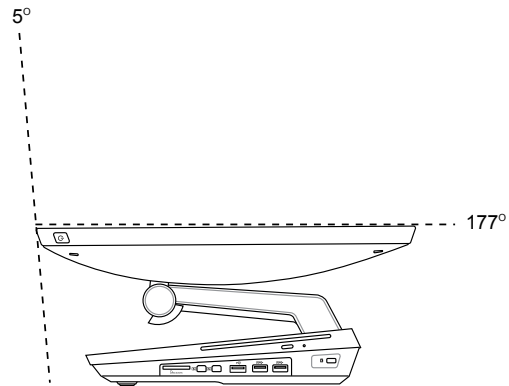
This image shows a full page of blank, lined paper. It features approximately 20 evenly spaced horizontal grey lines across its entire width, providing a template for handwriting practice or general note-taking. The margins are consistent on all sides.

## Chapter 2: Using your All-in-One PC

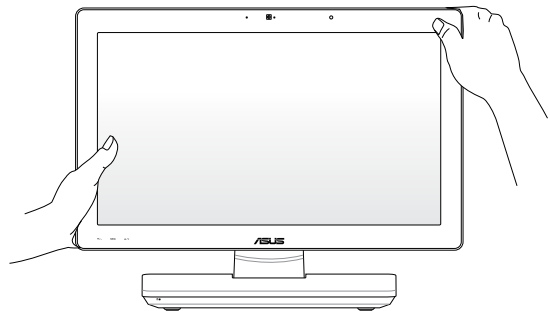
### Positioning your All-in-one PC

1. Place your All-in-One PC on a flat surface such as a table or desk.
2. The display can be adjusted to an angle between  $5^{\circ}$  to  $177^{\circ}$ .

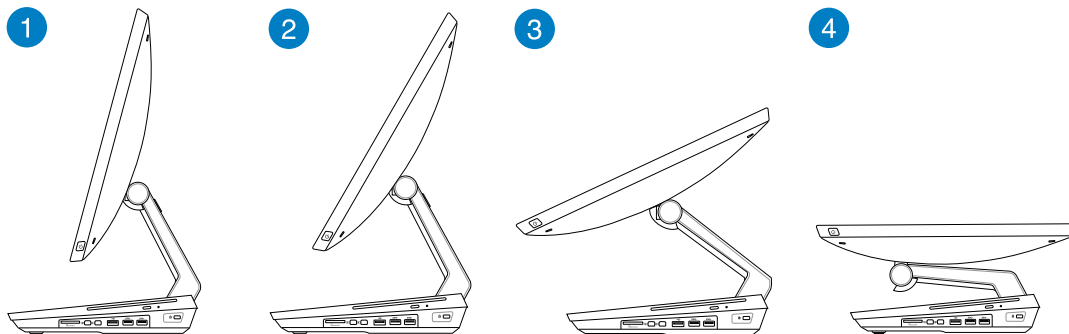
**IMPORTANT!** Avoid adjusting the display to an angle beyond the recommended values or you may risk damaging the All-in-One PC.



3. To adjust the angle of the display, hold the upper-right corner with your right hand while supporting the lower-left corner with your left hand.



4. Carefully tilt the display using both hands until it is at a comfortable angle.



## Connecting a wireless keyboard and mouse

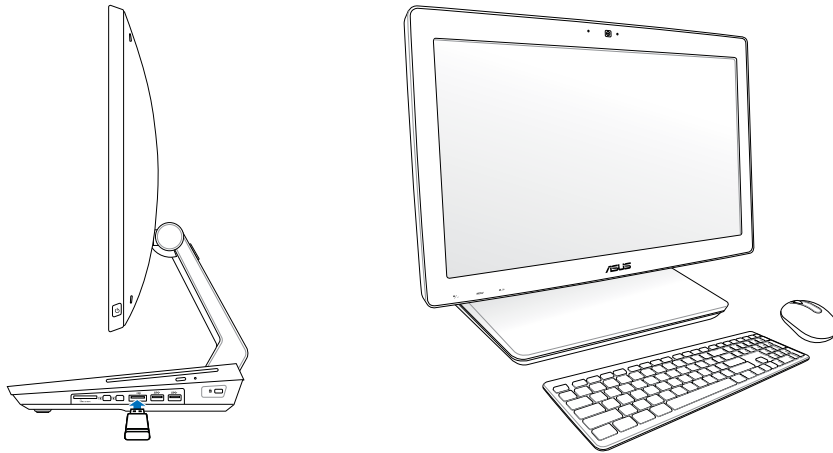
1. Install batteries into the wireless keyboard and mouse.
2. Connect the wireless dongle for keyboard and mouse to a USB port.

---

**NOTE:** ASUS recommends that you connect the wireless dongle to the USB 2.0 port.

---

3. You can begin using the wireless keyboard and mouse.



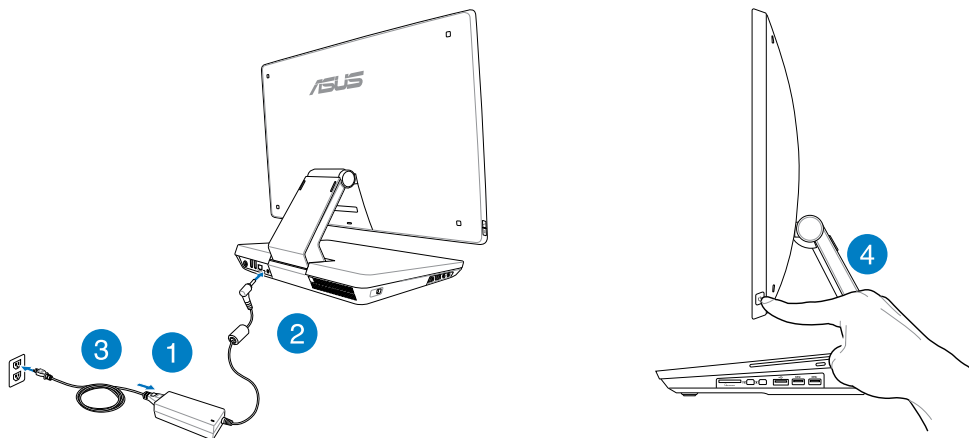
---

### NOTES:

- Reconnect the wireless keyboard and mouse with the wireless dongle if they lose connection. Avoid using either devices alongside other wireless devices. Position the mouse and keyboard at least 20 cm away from other wireless hardware to avoid interference.
  - The illustrations above are for reference only. Actual hardware and specifications of the wireless keyboard and mouse vary.
-

## Powering on your All-in-One PC

Connect the supplied AC adapter to the **DC IN** jack on the rear panel (1 2 3) and then press the **Power button** on the right panel (4) of the All-in-One PC to power on the system.



**WARNING!** DO NOT connect the AC power cord to an AC outlet prior to connecting the DC plug to the system. Doing so may damage the AC-DC adapter.

**NOTE:** For details on turning off your All-in-One PC, refer to the section *Turning off your All-in-One PC* in *Working with Windows® 8*.



## Using the On Screen Display (OSD) Menu

The On Screen Display (OSD) menu will appear when you:

1. Press the **Menu** button on the front panel.
2. Connect an HDMI cable to the rear HDMI input port.

### Using the OSD Menu

To display the OSD menu, press the **Menu** button on the front panel. To navigate through the OSD functions or modify OSD settings, press the **Menu Up** or **Menu Down** keys on the front panel. To activate the selected function, press the **Menu** button again.

---

**NOTE:** Refer to the section *Getting to know your All-in-One PC* for the location of the front panel buttons.

---

#### Panel Off

Press this button to switch off the display.

#### Color

- **Brightness:** This setting can be adjusted using values between 0 to 100.
- **Contrast:** This setting can be adjusted using values between 0 to 100.
- **Color Temp. :** Four color modes are available - Cool, Normal, Warm, and User mode.

#### Image

- **Sharpness:** This setting can be adjusted using values between 0 to 100.
- **Aspect Control:** Select the aspect ratio to "Full" or "OverScan". This setting is available only when you use the All-in-One PC as a standard desktop LCD monitor.
- **Auto Adjust:** Adjusts the horizontal position (H-Position) and the vertical position (V-Position) of the display. This feature is available only when you use the All-in-One PC as a standard desktop LCD monitor.

#### Input Select

- **PC:** Displays video produced by the All-in-One PC.
- **HDMI:** Display video input from the HDMI Input port.

## System Setup

- **OSD Setup:**
  1. H-Position - Adjusts the horizontal position of the OSD menu.
  2. V-Position - Adjusts the vertical position of the OSD menu.
  3. OSD Timeout - Sets the display duration of OSD menu from 10 to 120 seconds.
  4. DDC/CI - Enables or disables the DDC/CI (Display Data Channel/Command Interface).
- **Information:** Displays resolution and refresh rate.
- **Language:** Sets the OSD language.
- **Device Share:** Enables or disables the Device Share feature. When enabled, the **HDMI** item under the Input Select menu will be displayed as **HDMI with Device Share**.
- **All Reset:** Resets all OSD settings to defaults.

## Exit

Exit from the OSD menu.

## Input signal selection

The **Input Select** menu appears when you connect an HDMI cable to the rear HDMI ports or a Thunderbolt cable to one of the Thunderbolt ports on the left panel. Use the **Menu Up** or **Menu Down** buttons to select input source and press the **Menu** button to activate the option. Refer to **Input Select** in the previous section for details.

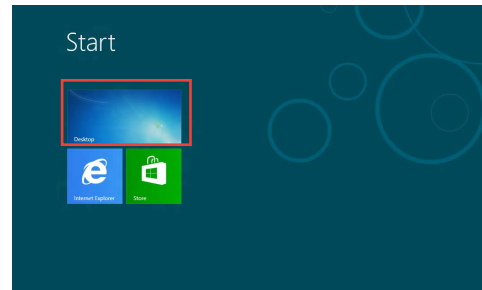
## Configuring the audio output via an HDMI device

If you want to use a high-definition TV as an audio output device, connect it to the All-in-One PC and follow the steps below to configure the audio settings.

**To configure the audio output via an HDMI device:**

1. From the Start screen, click **Desktop** to launch the Desktop Mode.

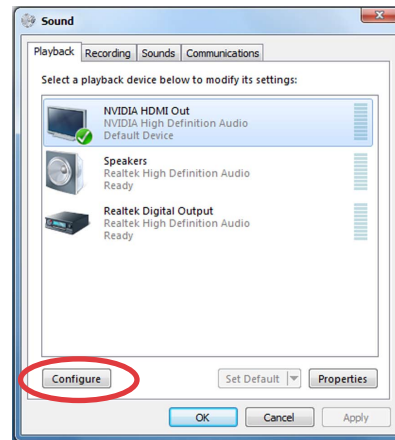
**NOTE:** For more details, refer to the section *Start Screen* under *Working with Windows® 8*.



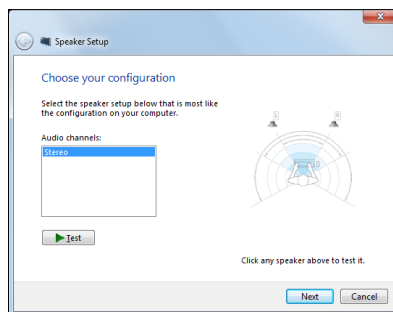
2. Right-click the Volume Mixer icon on the Windows® taskbar and click **Playback devices**.



3. From the Playback screen, select **Digital Audio (HDMI)**.
4. Click **Configure** and the Speaker Setup window pops up.

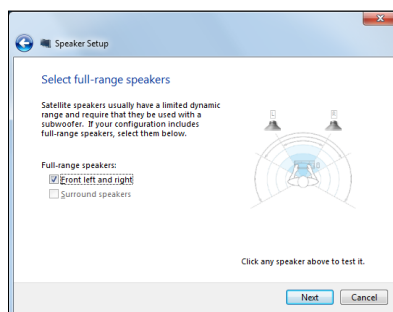


5. Select **Stereo** and click **Next**.



6. Select the **Front left and right** option, and click **Next**.

7. Click **Finish** to exit the speaker setup.



## Gestures

Gestures allow you to launch programs and access the settings of your All-in-One PC. Functions can be activated by using the hand gestures to your All-in-One PC's display panel.

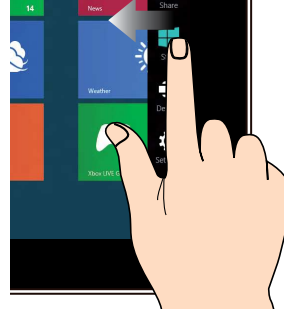
### Using gestures

#### Left edge swipe



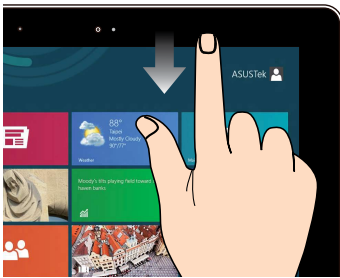
Swipe from the left edge of the screen to shuffle your running apps.

#### Right edge swipe



Swipe from the right edge of the screen to launch the Charm bar.

#### Top edge swipe



- In the Start screen, swipe from the top edge of the screen to view the All Apps bar.
- In a running app, swipe the from top edge of the screen to view its menu.

#### Finger slide



Slide your finger to scroll up and down and slide your finger to pan the screen left or right.

**Zoom out**

Bring together your two fingers on the touch panel.

**Zoom in**

Spread apart your two fingers on the touch panel.

**Tap and hold**

- To move an app, tap and hold the app tile and drag it to a new location.
- To close an app, tap and hold the top side of the running app and drag it down to the bottom of the screen to close it.

**Tap/Double tap**

- Tap an app to launch it.
- On Desktop mode, double-tap an item to launch it.

## Using Ai Crosslink

Ai Crosslink lets you drag and drop and copy/paste files, text, and multimedia between the All-in-One PC and another Windows® PC.

### Installing Ai Crosslink

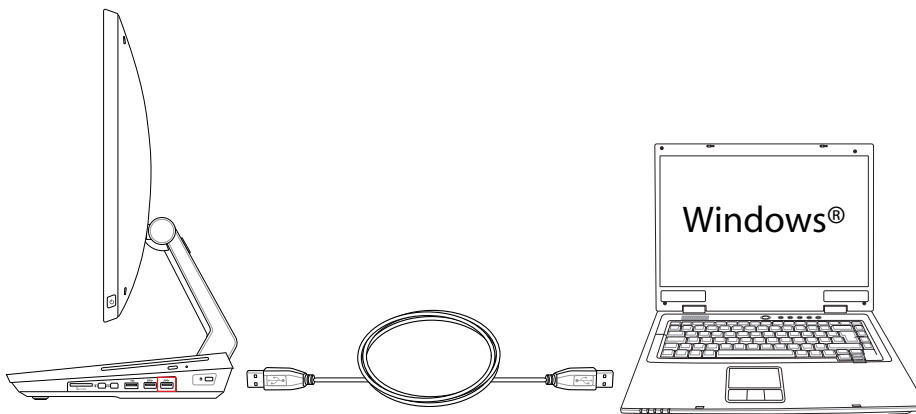
#### To install Ai Crosslink:

1. Connect one end of the provided ASUS Link cable to the designated USB port that supports Ai Crosslink.

#### NOTES:

- Use only the provided ASUS Link cable when setting up Ai Crosslink. Using a cable other than the provided ASUS Link cable can damage the port.
- Refer to the section *Getting to know your All-in-One PC* for the location of the USB port designated for Ai Crosslink.

2. Connect the other end of the ASUS Link cable to any USB port on a PC running Windows® OS.



3. On the All-in-One PC desktop, locate the ASUS Ai Crosslink widget. Click the Ai Crosslink logo.



- On the other Windows® device, a popup will be displayed indicating the Ai Crosslink Setup CD. Click **Run AACLoader.exe** to begin installation.

#### CD Drive (E:) ASUSAiCrossli...

Choose what to do with this disc.

Install or run program from your media



Run AACLoader.exe  
Published by Ours Technology Inc.

Other choices

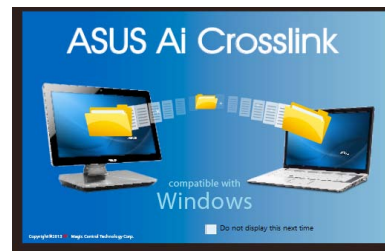


Open folder to view files  
File Explorer



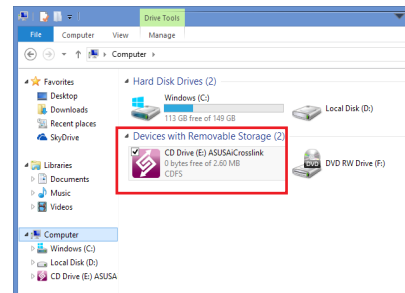
Take no action

- Once the ASUS Ai Crosslink window appears, setup is complete.



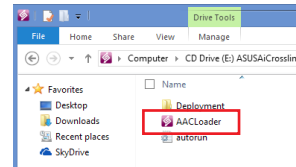
## Troubleshooting the Ai Crosslink Installation

- If the popup for the Ai Crosslink Setup CD does not appear on the Windows® 8 device, check if the ASUS Link cable is connected properly.
- Launch **File Manager**. Click the **ASUS Ai Crosslink** icon.



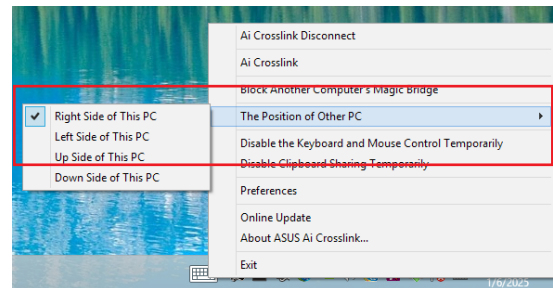
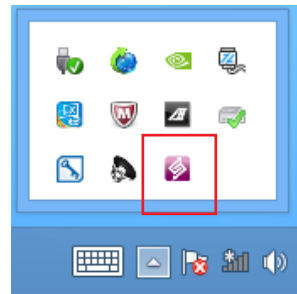


3. Click **AACLoader.exe** to install Ai Crosslink.

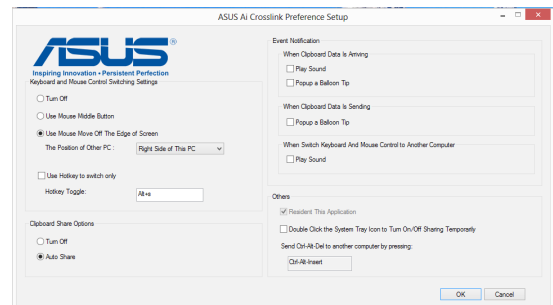


## Setting up Ai Crosslink

1. Click the ASUS Ai Crosslink icon on the System Tray.
2. On the context menu, click **The Position of Other PC** and select the location of the other PC.



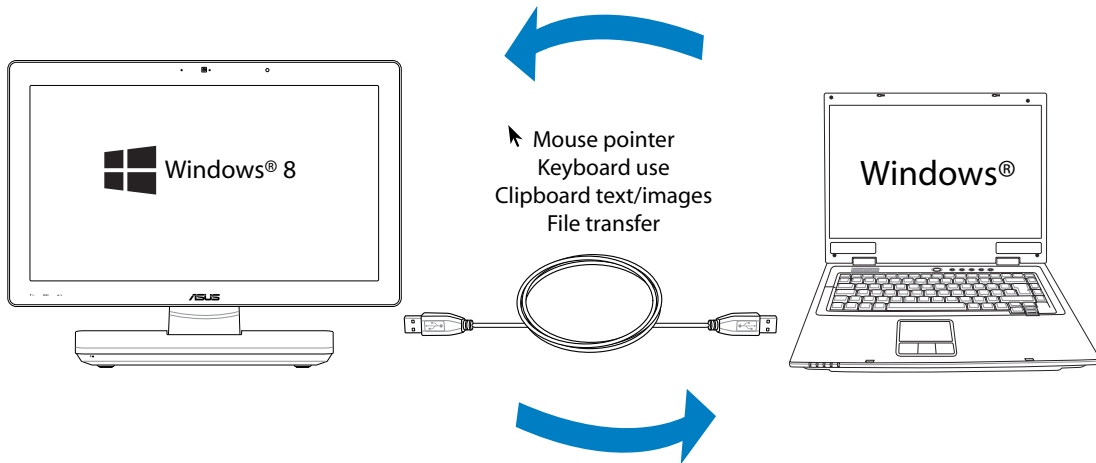
3. Click **Preferences** for additional options such as sharing of Clipboard items, notifications, and Keyboard and Mouse controls.



## Using Ai Crosslink Features

Using Ai Crosslink you can:

- Click **Use Mouse Off the Edge of Screen** in **Preferences** to move the mouse pointer across the desktop displays of the two PCs.
- Use the keyboard on one PC to input text on the other PC.
- Copy and paste text or images between the two PCs.
- Drag and drop files or folders between the two PCs.



## Using Device Share

Your All-in-One PC can be used as a standard desktop LCD display and with Device Share enabled, you can share the display, keyboard, mouse, webcam\*, and touch screen\* display of the All-in-One PC with any notebook PC, desktop PC, or Android tablet.

---

**NOTE:** Device Share access for webcams and touch screens only works with devices running Microsoft Windows®.

---

1. Enable the **Device Share** feature in the **System Setup** menu in the OSD.

---

**NOTE:** For instructions on accessing the OSD, please refer to the section *Using the On Screen Display (OSD) Menu*.

---

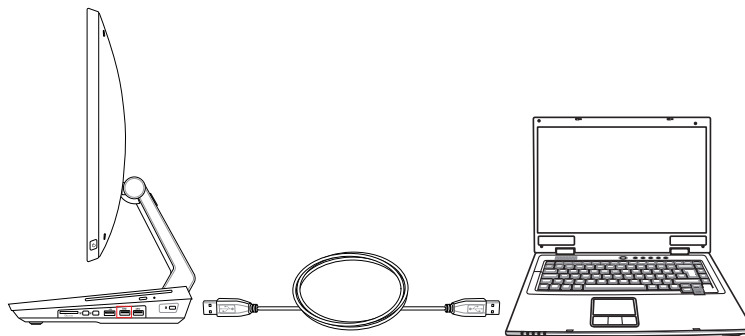
2. Connect one end of the provided ASUS Link cable to the designated USB 3.0 port that supports Device Share.

---

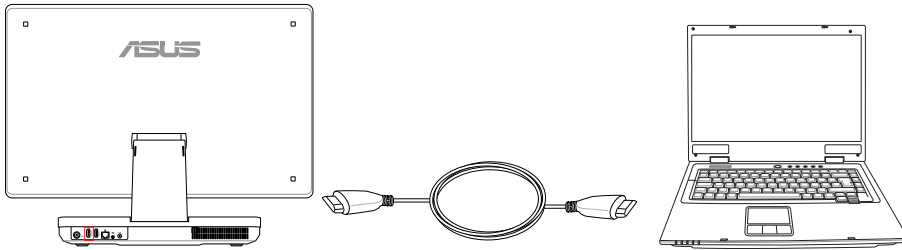
**NOTES:**

- Use only the provided ASUS Link cable when setting up Device Share. Using a cable other than the provided ASUS Link cable can damage the port.
  - Refer to the section *Getting to know your All-in-One PC* for the location of the USB 3.0 port designated for Device Share.
- 

3. Connect the other end of the ASUS Link cable to a USB port on a notebook PC, desktop PC, or Android tablet.
4. To share the display, connect one end of a male-to-male HDMI cable to the HDMI port of the All-in-One PC. Connect the other end of the HDMI cable to the desktop PC, laptop PC or Android tablet.



5. The **Input Select** menu appears when you connect an HDMI cable to the rear HDMI port. Use the **Menu Up** or **Menu Down** buttons to select input source and press the **Menu** button to activate the option.



---

**NOTES:**

- By default, the All-in-One PC is set to PC mode, where the All-in-One PC is the display input source. The touch screen, webcam and rear USB ports will be controlled by the All-in-One PC even if Device Share is enabled.
  - When switching the display input source to HDMI (where the All-in-One PC is used as a desktop LCD monitor), the touch screen, webcam, and rear USB ports will be controlled by the external notebook/desktop PC if Device Share is enabled.
  - Device Share can be enabled even if the All-in-One PC is powered off. If you power on the All-in-One PC while using an external device on Device Share, an Input Select OSD menu will appear for display signal selection.
-

## Chapter 3: Working with Windows® 8

### Starting for the first time (For Windows® 8 and Windows® 8 Professional)

When you start your computer for the first time, a series of screens appear to guide you in configuring the basic settings of your Windows® 8 operating system.

#### To start for the first time:

1. Press the power button on your All-in-One PC. Wait for a few minutes until the setup screen appears.
2. Select a language to use on your All-in-One PC.
3. Carefully read the License Terms. Tick **I accept the terms for using Windows** then click **Accept**.
4. Follow the onscreen instructions to configure the following basic items:
  - Personalize
  - Wireless
  - Settings
  - Sign in to your PC
5. Once you are done configuring the basic items, a Windows®8 tutorial appears. Watch this tutorial to learn more about Windows®8 functionalities.
6. The Start screen appears after successfully signing in to your user account.

### Windows® 8 lock screen

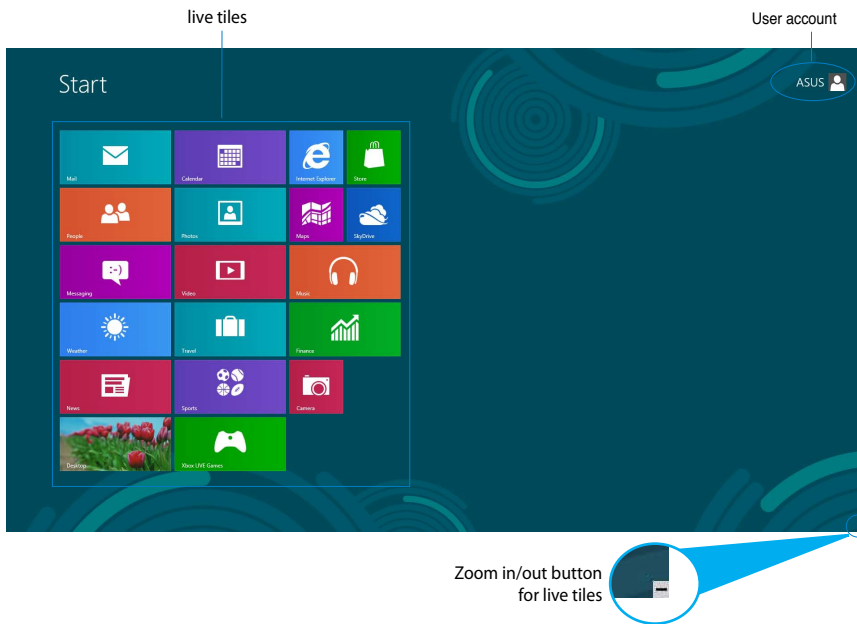
The Windows®8 lock screen may appear when your All-in-One PC enters the Windows®8 operating system. To proceed, tap on the lock screen or press any key on your All-in-One PC's keyboard.

## Windows® UI

The Windows® User Interface (UI) is the tile-based display used in Windows® 8. It includes the following features you can use while working on your All-in-One PC.

### Start screen

The Start screen appears after successfully signing in to your user account. It helps organize all the programs and applications you need in just one place.



## Windows® apps

These are apps pinned on the Start screen and displayed on tiled-format for easy access.

---

**IMPORTANT!** A screen resolution of 1024 x 768 pixels or higher is required to run Windows® apps.

---

---

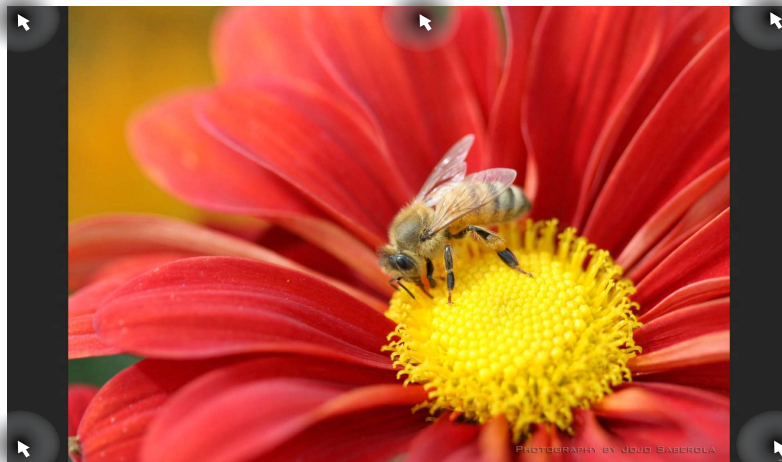
**NOTE:** Some apps require signing in to your Microsoft account before they are fully launched.

---

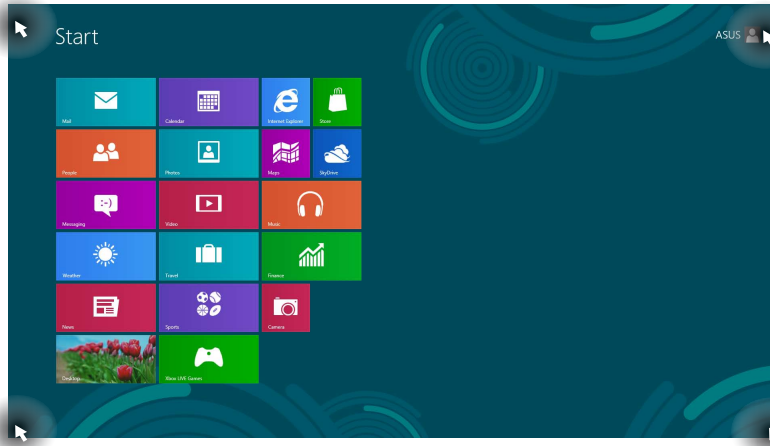
## Hotspots

Onscreen hotspots allow you to launch programs and access the settings of your PC. The functions in these hotspots can be activated using your mouse.

### Hotspots on a running app




## Hotspots on the Start screen



**NOTE:** Refer to the next page for the Hotspots' functions.



Hotspot	Action
upper left corner	<p>Hover your mouse pointer then tap on the recent app's thumbnail to revert back to that running app.</p> <hr/> <p>If you launched more than one app, slide down to show all running apps.</p> <hr/>
lower left corner	<p><b>From a running app screen:</b></p> <p>Hover your mouse pointer then tap on the Start screen's thumbnail to go back to the Start screen.</p> <hr/> <p><b>NOTE:</b> You can also press the Windows key  on your keyboard to go back to the Start screen.</p> <hr/> <p><b>From the Start screen:</b></p> <p>Hover your mouse pointer then tap on the running app's thumbnail to go back to that app.</p> <p>Hover your mouse pointer then click on the recent app's thumbnail to go back to that app.</p> <hr/>
top	<p>Hover your mouse pointer until it changes to a hand icon. Drag then drop the app to a new location.</p> <hr/> <p><b>NOTE:</b> This hotspot function only works on a running app or when you want to use the Snap feature. For more details, refer to <i>Snap feature</i> under <i>Working with Windows® apps</i>.</p> <hr/>
upper and lower right corner	<p>Hover your mouse pointer to launch the Charm bar.</p> <hr/>

# Working with Windows® apps

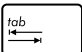
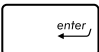
Use your All-in-One PC’s touchscreen or keyboard to launch and customize your apps.

## Launching apps



Tap an app to launch it.



- 1. Press  twice then use the arrow keys to browse through the apps.
- 2. Press  to launch your selected app.

## Customizing apps

You can move, resize, or unpin apps from the Start screen using the following steps.



### Moving apps



Tap and hold the app tile and drag it to a new location.


### Resizing apps



Swipe down the app tile to select and launch its settings bar. Tap  to reduce or tap  to enlarge an app.

### Unpinning apps



Swipe down the app tile to select and launch its settings bar. Tap  to unpin an app.

## Closing apps



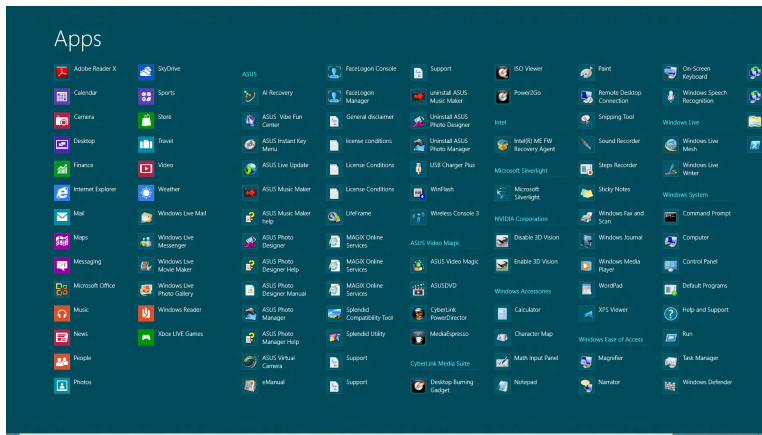
Tap and hold the top side of the running app then drag it down to the bottom of the screen to close it.



From the running app's screen, press + .

## Accessing All Apps

Aside from the apps already pinned on your Start screen, you can also open other applications like the exclusive ASUS Software apps bundled with your All-in-One PC through the Apps screen.



## Launching the Apps screen

Launch the Apps screen using your All-in-One PC's touchscreen or keyboard.



1. Swipe down the app tile to select and launch its settings bar.
2. Tap to show all installed apps in your All-in-One PC.



From the Start screen, press + to select the All Apps icon then press .

## Pinning more apps on the Start screen

You can pin more apps on the Start screen using your touchscreen.



1. Swipe down the app tile to select and launch its settings bar.



2. Tap **Pin to Start** to pin the selected app to the Start screen.

## Charm bar

The Charm bar is a toolbar that can be triggered on the right side of your screen. It consists of several tools that allow you to share applications and provide quick access for customizing the settings of your All-in-One PC.



## Launching the Charm bar

**NOTE:** When called out, the Charm bar initially appears as a set of white icons. The image above shows how the Charm bar looks like once activated.

Use your All-in-One PC's touchscreen or keyboard to launch the Charm bar.



1. Swipe the right edge of the screen.



2. Press  + .

## Inside the Charm bar



### Search

This tool allows you to look for files, applications, or programs in your All-in-One PC.



### Share

This tool allows you to share applications via social networking sites or email.



### Start

This tool reverts the display back to the Start screen. From the Start screen, you can also use this to revert back to a recently opened app.



### Devices

This tool allows you to access and share files with the devices attached to your All-in-One PC such as an external display or printer.



### Settings

This tool allows you to access the PC settings of your All-in-One PC.

## Snap feature

The Snap feature displays two apps side-by-side, allowing you to work or switch between apps.

**IMPORTANT!** Ensure that your All-in-One PC's screen resolution is set to 1366 x 768 pixels or higher before using the Snap feature.



Snap bar





## Using Snap

Perform the following steps to activate Snap using your All-in-One PC's touchscreen or keyboard.



1. Launch the app you wish to snap.
2. Hover the mouse point on the top side of your screen.
3. Once the pointer changes to a hand icon, drag then drop the app to the left or right side of the display panel.
4. Launch another app.



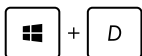
1. Launch the app you wish to snap.
2. Press  + .
3. To switch between apps, press  + .

## Other keyboard shortcuts

Using the keyboard, you can also use the following shortcuts to help you launch applications and navigate Windows®8.



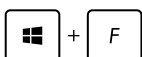
Switches between the current and the last running app



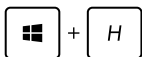
Launches the desktop



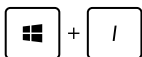
Launches the Computer window on Desktop mode



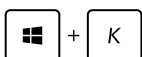
Opens the File search pane



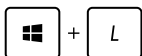
Opens the Share pane



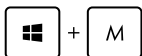
Opens the Settings pane



Opens the Devices pane



Activates the Lock screen



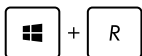
Minimizes the Internet Explorer window



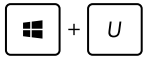
Opens the Second screen pane



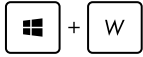
Opens the Apps search pane



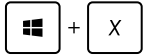
Opens the Run window



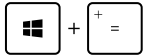
Opens Ease of Access Center



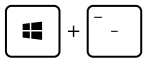
Opens the Settings search pane



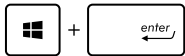
Opens a menu box of Windows tools



Launches the magnifier icon and zooms in your screen



Zooms out your screen



Opens the Narrator Settings




Enables the print screen function

## Turning your All-in-One PC off

Do either of the following to shut down your All-in-One PC:



- Tap  on the Charm bar then tap  > **Shut down** to do a normal shutdown.

- From the log-in screen, tap  > **Shut down**.
- If your All-in-One PC is unresponsive, press and hold the power button for at least four (4) seconds until your All-in-One PC turns off.



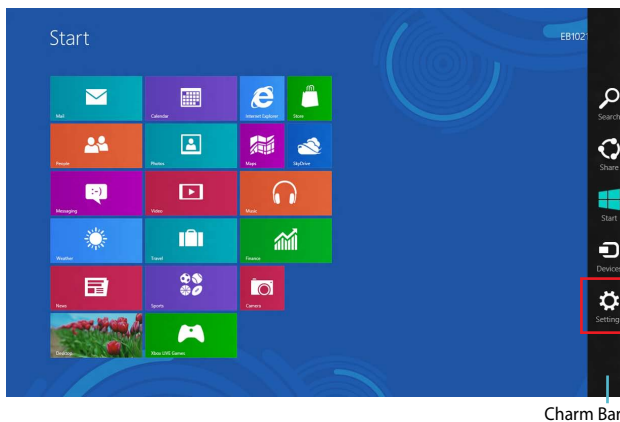
## Chapter 4: Connecting to the Internet


Access emails, surf the Internet, and share applications via social networking sites on or from your PC using wireless/Wi-Fi or wired connection.

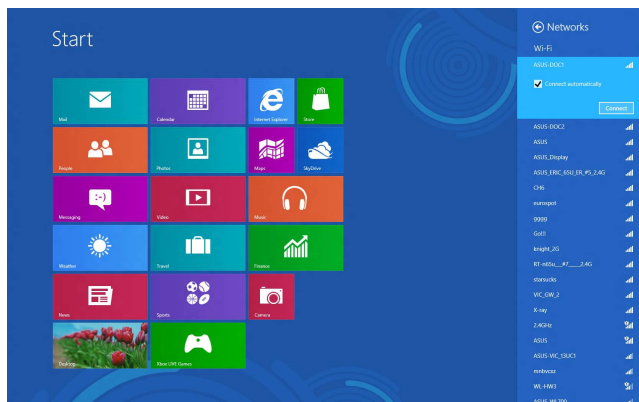
### Setting up a Wi-Fi connection in Windows® 8

1. Launch the Charm bar from the Start screen or from any application mode.

**NOTE:** For details, refer to the section *Charm bar* under *Working with Windows® apps*.



2. From the Charm bar, select **Settings** and click the network icon .
3. Select the wireless network that you want to connect to from the list.
4. Click **Connect**.



## Setting up a Wired connection in Windows® 8

1. Use a network (RJ-45) cable to connect your All-in-One PC to a DSL/cable modem or a local area network (LAN).
2. Turn on your computer.
3. Configure the necessary Internet connection settings.

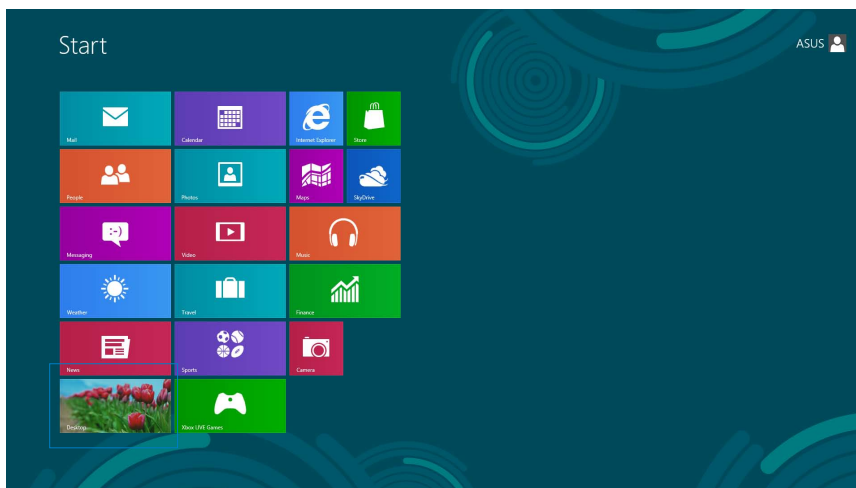
### NOTES:


- For more details, refer to the sections *Configuring a dynamic IP/PPPoE network connection* or *Configuring a static IP network connection*.
- Contact your Internet Service Provider (ISP) for details or assistance in setting up your Internet connection.

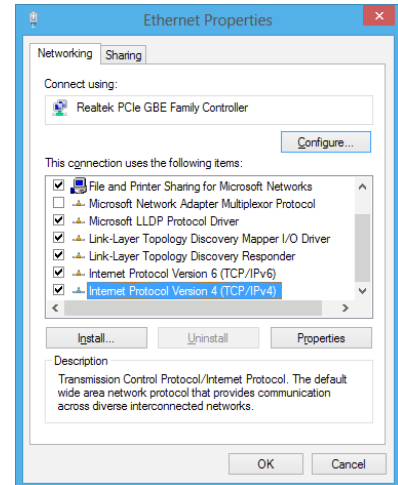
## Configuring a dynamic IP/PPPoE network connection

### To configure a dynamic IP/PPPoE or static IP network connection:

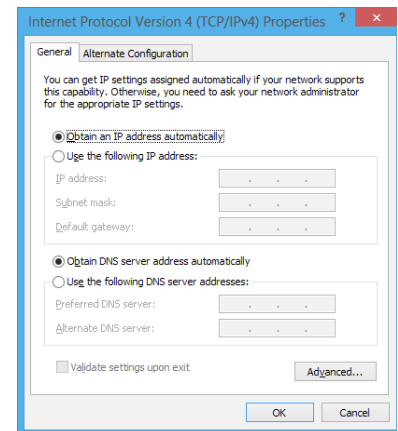
1. From the Start screen, click **Desktop** to launch the Desktop mode.



2. From the Windows® taskbar, right-click the network icon  and click **Open Network and Sharing Center**.
3. From the Open Network and Sharing Center screen, click **Change Adapter settings**.
4. Right-click on your LAN and select **Properties**.
5. Click **Internet Protocol Version 4(TCP/IPv4)** and click **Properties**.

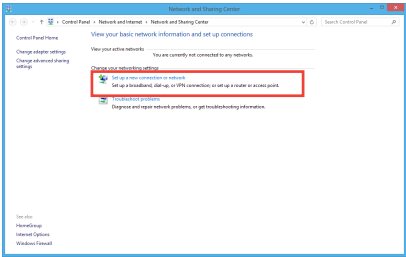


6. Click **Obtain an IP address automatically** and click **OK**.

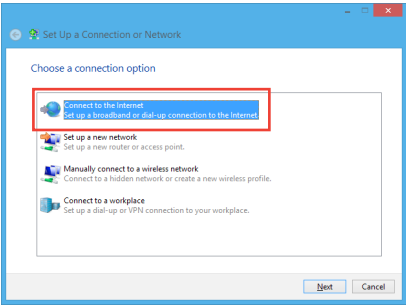


**NOTE:** Continue to the next steps if you are using PPPoE connection.

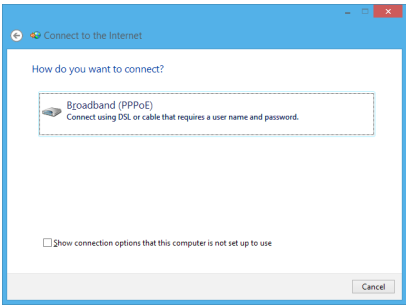
7. Return to the **Network and Sharing Center** and then click **Set up a new connection or network**.



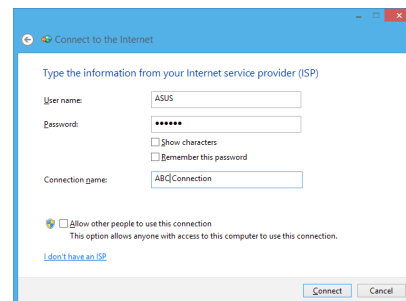
8. Select **Connect to the Internet** and click **Next**.



9. Select **Broadband (PPPoE)** and click **Next**.



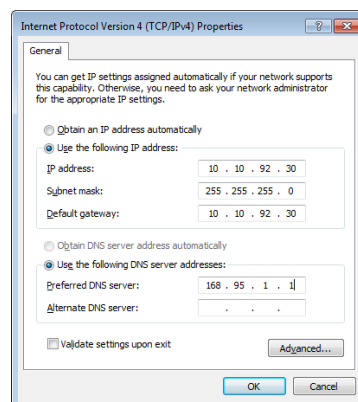
10. Enter your **Username**, **Password**, and **Connection name**. Click **Connect**.
11. Click **Close** to finish the configuration.
12. Click the network icon in the taskbar and click the connection you just created.
13. Enter your user name and password. Click **Connect** to connect to the Internet.



## Configuring a static IP network connection

To configure a static IP network connection:

1. Repeat steps 1 to 5 of the previous section **Configuring a dynamic IP/PPPoE network connection**.
2. Click **Use the following IP address**.
3. Enter the IP address, Subnet mask and Gateway from your service provider.
4. If needed, enter the preferred DNS Server address and alternative address.
5. When done, click **OK**.



## Setting up a Bluetooth Wireless Connection (Selected models only)

Bluetooth technology eliminates the need for cables for connecting to Bluetooth-enabled devices. Examples of Bluetooth-enabled devices include Notebook PCs, Desktop PCs, and mobile phones.

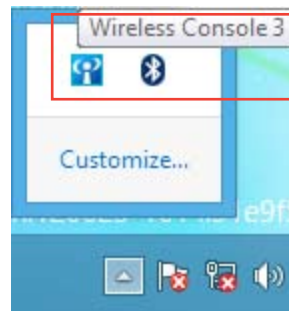
**NOTE:** If your All-in-One PC did not come with built-in Bluetooth, you need to connect a USB Bluetooth module in order to use Bluetooth.

### To add a Bluetooth device in Windows® 8:

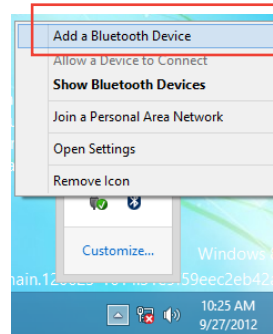
1. Press **FN+F2** until the wireless LAN and Bluetooth icons are displayed and enabled.



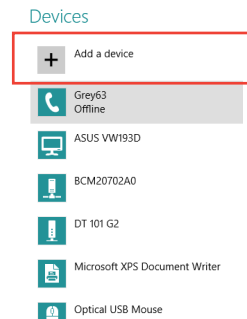
You can also double-click the Wireless Console icon in the Windows notification area and select the Bluetooth icon.



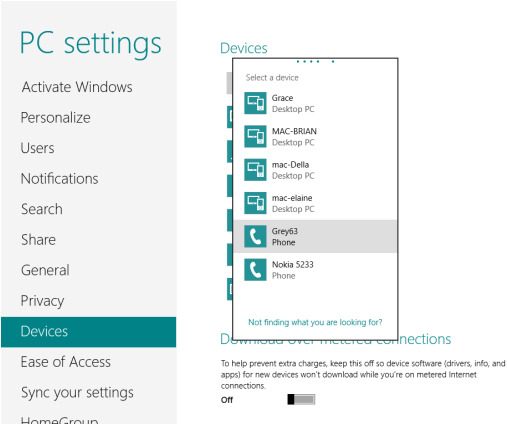
2. Click the Bluetooth logo on the System Tray and select **Add a Device** from the context menu .



3. In the PC settings window, click **Add a device** to look for available Bluetooth devices.



4. Select a Bluetooth device from the list.



5. Windows will display a Bluetooth passcode.  
Select **Yes** to confirm and pair the All-in-One PC with the Bluetooth device.
6. Bluetooth pairing has been successfully set up.



## Chapter 5: Recovering your system

### Entering the BIOS Setup

BIOS (Basic Input and Output System) stores system hardware settings that are needed for system startup in the PC.

In normal circumstances, the default BIOS settings apply to most conditions to ensure optimal performance. Do not change the default BIOS settings except in the following circumstances:

- An error message appears on the screen during the system bootup and requests you to run the BIOS Setup.
- You have installed a new system component that requires further BIOS settings or update.

---

**WARNING!** Inappropriate BIOS settings may result in instability or boot failure. We strongly recommend that you change the BIOS settings only with the help of trained service personnel.

---

### Quickly enter the BIOS

Windows® 8 boot time is quite fast, so we developed three ways for you to quickly access the BIOS:

- When your All-in-One PC is off, press the power button for at least four (4) seconds to access the BIOS directly.
- Press the power button for at least four (4) seconds to shut down your All-in-One PC, then press the power button again to turn your All-in-One PC back on, and press <F2> during POST.
- When your All-in-One PC is off, disconnect the power cord from your All-in-One PC's power connector. Reconnect the power cord and press the power button to turn on your All-in-One PC. Press <F2> during POST.

---

**NOTE:** POST (Power-On Self Test) is a series of software controlled diagnostic tests that run when you turn on your All-in-One PC.

---

## Resetting your All-in-One PC in Windows® 8

The **Reset your PC** option restores your PC to its factory default settings.

---

**IMPORTANT!** Back up all your data before using this option.

---

### To reset your All-in-One PC:

1. If your All-in-One PC is off, press the power button to turn on your All-in-One PC.  
If your All-in-One PC is already on, launch the Windows® 8 Charm bar then go to **Settings > Change PC settings > General**. From the **General** pane, scroll down to **Advanced startup** and tap or tap or click **Restart now**.
2. Press <F9> during bootup.
3. From the screen, tap or click **Troubleshoot**.
4. Select **Reset your PC**.
5. Tap or click **Next**.
6. Select **Only the drive where the Windows is installed**.
7. Select **Just remove my files**.
8. Tap or click **Reset**.

## Recovering from a system image file in Windows® 8

You can create a USB recovery drive and use this to recover your PC's settings.

### Creating a USB recovery drive

**WARNING!** All files on your USB storage device will be permanently deleted during the process. Before you proceed, ensure that you back up all your important data.

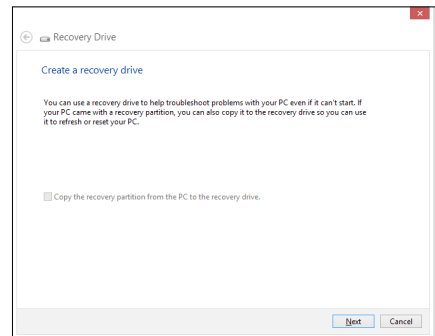
#### To create a USB recovery drive:

1. Launch the Control Panel from the All Apps screen.

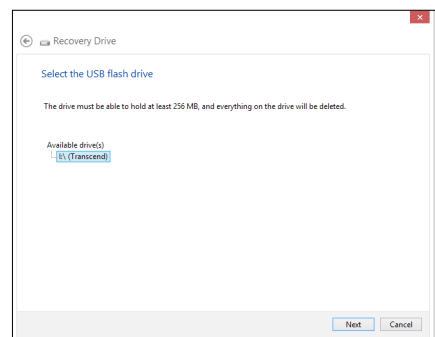
**NOTE:** For details, refer to *Launching the All Apps screen under Working with Windows® apps*.

2. From the Control Panel's System and Security, click **Find and fix problems**.
3. Tap or click **Recovery** > **Create a recovery drive**.
4. Tap or click **Next**.

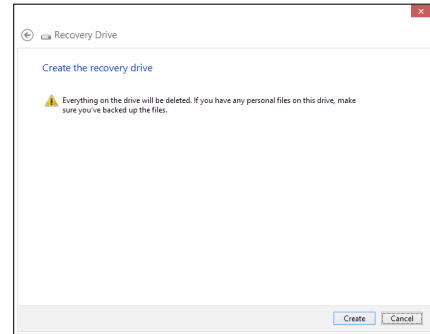
**NOTE:** If the check box is not ticked, no device drivers and apps will be installed in the recovery device.



5. Select the USB storage device where you want to copy the recovery files.
6. Click **Next**.



7. Click **Create**. Wait for a while for the process to complete.
8. When the process is completed, click **Finish**.



## Removing everything and reinstalling Windows® 8

Restoring your PC to its original factory settings can be done using the Remove everything and reinstall option in PC Settings. Refer to the steps below to use this option.

---

**IMPORTANT!** Back up all your data before using this option.

---

---

**NOTE:** This process may take a while to complete.

---

1. Launch the Charm bar.
2. Click **Settings > Change PC Settings > General**.
3. Scroll down to view the **Remove everything and reinstall Windows** option. Under this option, click **Get Started**.
4. Follow the onscreen instructions to complete the reinstallation and reset process.

# Appendices

## Notices

### REACH

Complying with the REACH (Registration, Evaluation, Authorization, and Restriction of Chemicals) regulatory framework, we publish the chemical substances in our products at ASUS REACH website at <http://csr.asus.com/english/REACH.htm>

### ASUS Recycling/Takeback Services

ASUS recycling and takeback programs come from our commitment to the highest standards for protecting our environment. We believe in providing solutions for you to be able to responsibly recycle our products, batteries, other components, as well as the packaging materials. Please go to <http://csr.asus.com/english/Takeback.htm> for the detailed recycling information in different regions.

### COATING NOTICE

**IMPORTANT!** To provide electrical insulation and maintain electrical safety, a coating is applied to insulate the device except on the areas where the I/O ports are located.

### FEDERAL COMMUNICATIONS COMMISSION INTERFERENCE STATEMENT

- (1) Outdoor operations in the 5.15-5.25GHz band is prohibited.
- (2) This device has no Ad-hoc capability for 5250~5350 and 5470~5725 MHz.

### RF exposure warning

This equipment must be installed and operated in accordance with provided instructions and the antenna(s) used for this transmitter must be installed to provide a separation distance of at least 20 cm from all persons and must not be co-located or operating in conjunction with any other antenna or transmitter. End-users and installers must be provided with antenna installation instructions and transmitter operating conditions for satisfying RF exposure compliance.

## Federal Communications Commission Statement

This device complies with Part 15 of the FCC Rules. Operation is subject to the following two conditions:

- This device may not cause harmful interference, and
- This device must accept any interference received including interference that may cause undesired operation.

This equipment has been tested and found to comply with the limits for a Class B digital device, pursuant to Part 15 of the FCC Rules. These limits are designed to provide reasonable protection against harmful interference in a residential installation. This equipment generates, uses and can radiate radio frequency energy and, if not installed and used in accordance with manufacturer's instructions, may cause harmful interference to radio communications. However, there is no guarantee that interference will not occur in a particular installation. If this equipment does cause harmful interference to radio or television reception, which can be determined by turning the equipment off and on, the user is encouraged to try to correct the interference by one or more of the following measures:

- Reorient or relocate the receiving antenna.
- Increase the separation between the equipment and receiver.
- Connect the equipment to an outlet on a circuit different from that to which the receiver is connected.
- Consult the dealer or an experienced radio/TV technician for help.

**CAUTION:** Any changes or modifications not expressly approved by the guarantee of this device could void the user's authority to operate the equipment.

## Canadian Department of Communications Statement

This digital apparatus does not exceed the Class B limits for radio noise emissions from digital apparatus set out in the Radio Interference Regulations of the Canadian Department of Communications.

This class B digital apparatus complies with Canadian ICES-003.

## IC Radiation Exposure Statement for Canada

This equipment complies with IC radiation exposure limits set forth for an uncontrolled environment. To maintain compliance with IC RF exposure compliance requirements, please avoid direct contact to the transmitting antenna during transmitting. End users must follow the specific operating instructions for satisfying RF exposure compliance.

Operation is subject to the following two conditions:

- This device may not cause interference and
- This device must accept any interference, including interference that may cause undesired operation of the device.

To prevent radio interference to the licensed service (i.e. co-channel Mobile Satellite systems) this device is intended to be operated indoors and away from windows to provide maximum shielding. Equipment (or its transmitting antenna) installed indoors is subject to licensing.

Because high power radars are located as primary users (meaning they have priority) in 5250-5350 MHz, these radars cause interference and/or damage to license exempt LAN devices.

## Declaration of Conformity (R&TTE directive 1999/5/EC)

The following items were completed and are considered relevant and sufficient:

- Essential requirements as in [Article 3]
- Protection requirements for health and safety as in [Article 3.1a]
- Testing for electric safety according to [EN 60950]
- Protection requirements for electromagnetic compatibility in [Article 3.1b]
- Testing for electromagnetic compatibility in [EN 301 489-1] & [EN 301 489-17]
- Effective use of the radio spectrum as in [Article 3.2]
- Radio test suites according to [EN 300 328-2]

## CE Mark Warning

This is a Class B product, in a domestic environment, this product may cause radio interference, in which case the user may be required to take adequate measures.



CE marking for devices without wireless LAN/Bluetooth

The shipped version of this device complies with the requirements of the EEC directives 2004/108/EC “Electromagnetic compatibility” and 2006/95/EC “Low voltage directive”.



CE marking for devices with wireless LAN/ Bluetooth

This equipment complies with the requirements of Directive 1999/5/EC of the European Parliament and Commission from 9 March, 1999 governing Radio and Telecommunications Equipment and mutual recognition of conformity.

**ⓘ is for class II device.**

Wireless Operation Channel for Different Domains

N. America	2.412-2.462 GHz	Ch01 through CH11
Japan	2.412-2.484 GHz	Ch01 through Ch14
Europe ETSI	2.412-2.472 GHz	Ch01 through Ch13

NO DISASSEMBLY

**The warranty does not apply to the products that have been disassembled by users**

Lithium-Ion Battery Warning

**CAUTION:** Danger of explosion if battery is incorrectly replaced. Replace only with the same or equivalent type recommended by the manufacturer. Dispose of used batteries according to the manufacturer’s instructions.

No Exposure to Liquids

DO NOT expose to or use near liquids, rain, or moisture. This product is not waterproof or oil-proof.





This symbol of the crossed out wheeled bin indicates that the product (electrical, electronic equipment, and mercury-containing button cell battery) should not be placed in municipal waste. Check local regulations for disposal of electronic products.



DO NOT throw the battery in municipal waste. The symbol of the crossed out wheeled bin indicates that the battery should not be placed in municipal waste.

## Global Environmental Regulation Compliance and Declaration

ASUS follows the green design concept to design and manufacture our products, and makes sure that each stage of the product life cycle of ASUS product is in line with global environmental regulations. In addition, ASUS disclose the relevant information based on regulation requirements.

Please refer to <http://csr.asus.com/english/Compliance.htm> for information disclosure based on regulation requirements ASUS is complied with:

**Japan JIS-C-0950 Material Declarations**

**EU REACH SVHC**

**Korea RoHS**

**Swiss Energy Laws**

## ENERGY STAR complied product



ENERGY STAR is a joint program of the U.S. Environmental Protection Agency and the U.S. Department of Energy helping us all save money and protect the environment through energy efficient products and practices.

All ASUS products with the ENERGY STAR logo comply with the ENERGY STAR standard, and the power management feature is enabled by default. The monitor and computer are automatically set to sleep after 15 and 30 minutes of user inactivity. To wake your computer, click the mouse or press any key on the keyboard.

Please visit <http://www.energy.gov/powermanagement> for detail information on power management and its benefits to the environment. In addition, please visit <http://www.energystar.gov> for detail information on the ENERGY STAR joint program.

**NOTE:** ENERGY STAR is NOT supported on Freedos and Linux-based products.

<b>Manufacturer</b>	ASUSTeK Computer Inc.	
	Tel:	+886-2-2894-3447
	Address:	4F, No. 150, LI-TE RD., PEITOU, TAIPEI 112, TAIWAN
<b>Authorised representative in Europe</b>	ASUSTeK Computer GmbH	
	Address:	HARKORT STR. 21-23, 40880 RATINGEN, GERMANY